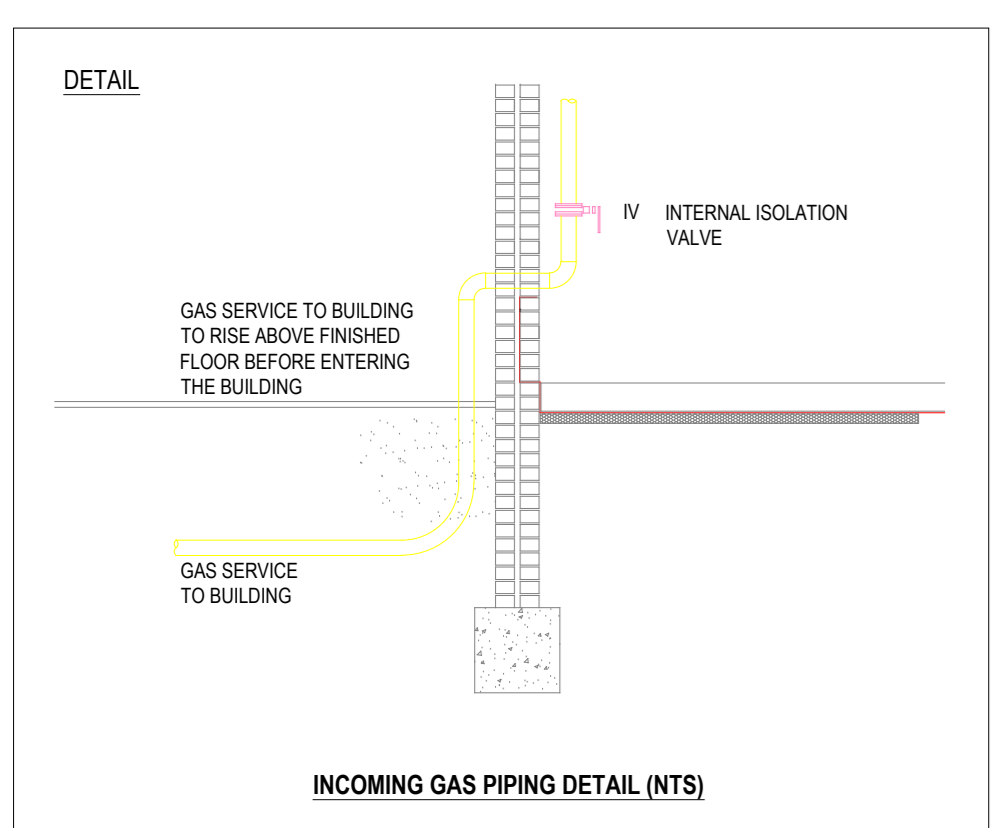
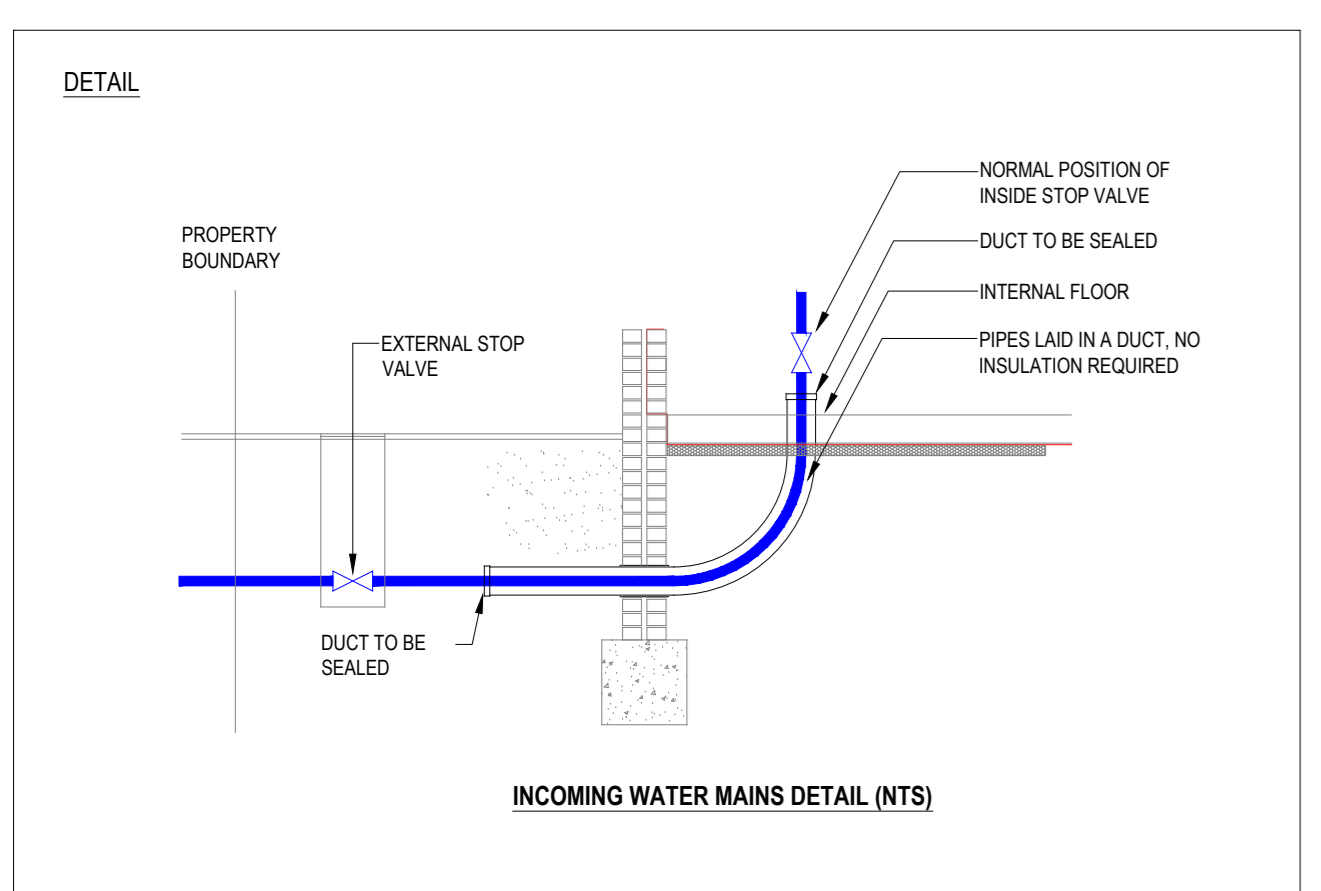
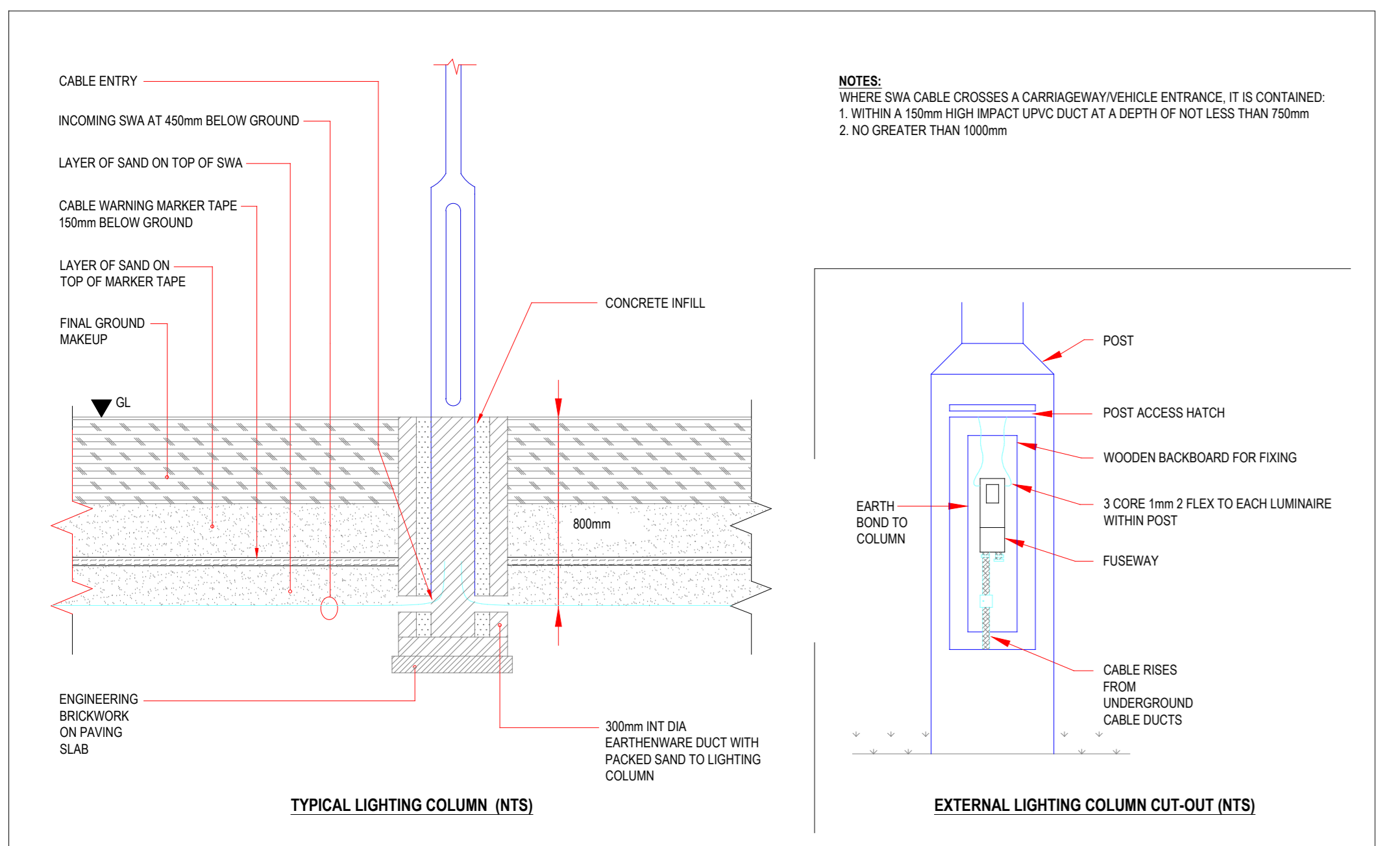
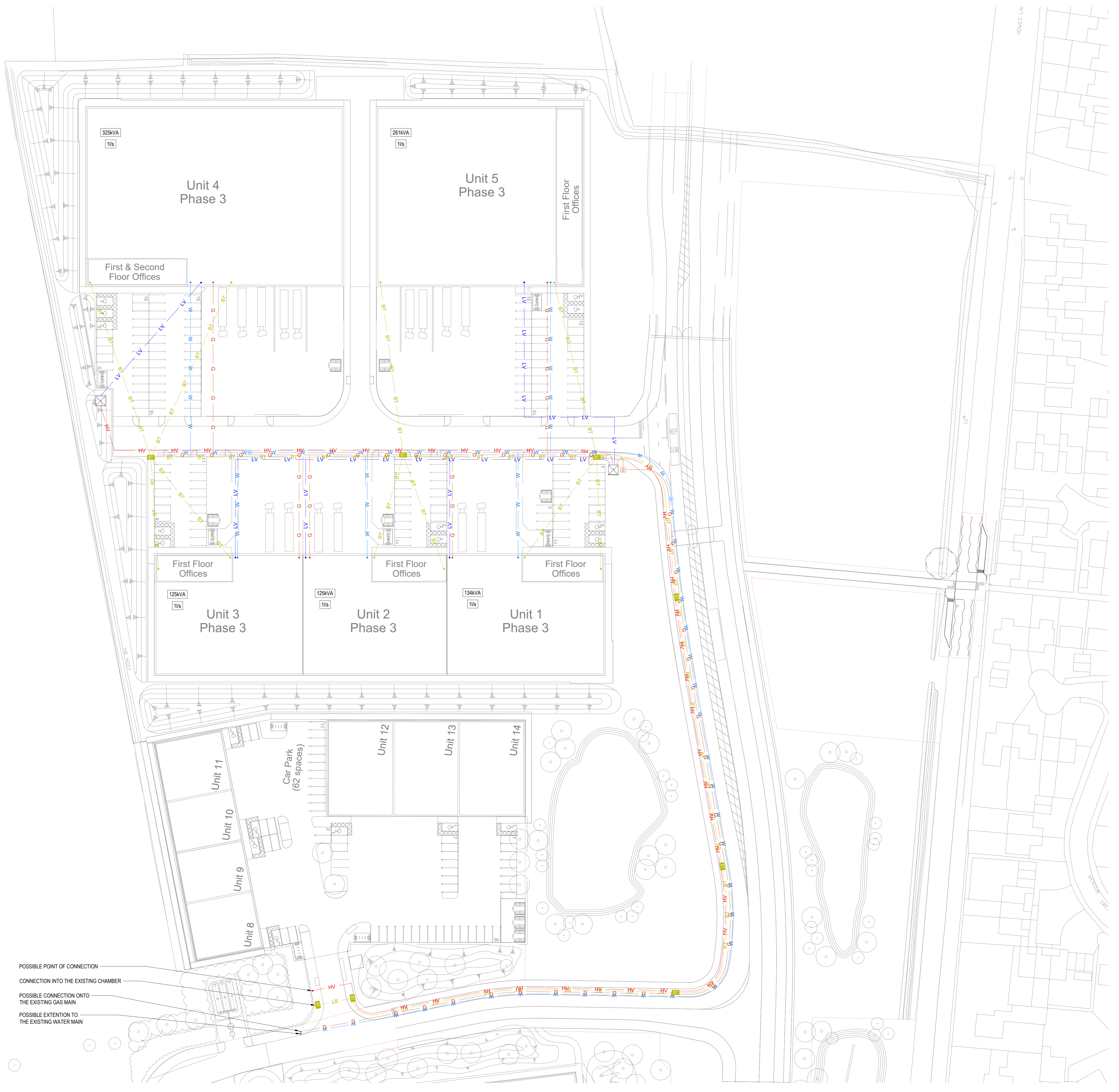


TABLE 1 - RECOMMENDED COLOUR CODING OF UNDERGROUND UTILITIES APPARATUS						
UTILITY	DUCT	PIPE	CABLE	MARKER SYSTEMS	RECOMMENDED MINIMUM DEPTHS	
					FOOTWAY/VERGE	CARRIAGEWAY
ELECTRICITY HV (HIGH VOLTAGE)	BLACK OR RED DUCT OR TILE	N/A	RED OR BLACK	YELLOW WITH BLACK AND RED LEGEND OR CONCRETE TILES	450-1200mm	750-1200mm
ELECTRICITY LV (LOW VOLTAGE)	BLACK OR RED DUCT OR TILE	N/A	RED OR BLACK	YELLOW WITH BLACK LEGEND	450mm	600mm
GAS	YELLOW	***SEE ROW BELOW	NA	BLACK LEGEND ON PE PIPES EVERY LINEAR METRE	600mm FOOTWAY 750mm VERGE	750mm
WATER - NON POTABLE & GREY WATER	N/A	BLACK WITH GREEN STRIPES	NA	NA	600-750mm	600-750mm
WATER - FIREFIGHTING	N/A	BLACK WITH RED STRIPES OR BANDS	NA	NA	600-750mm	600-750mm
OIL FUEL PIPELINES	N/A	BLACK	NA	VARIOUS SURFACE MARKERS. MARKER TAPE OR TILES ABOVE RED CONCRETE	900mm ALL WORK WITHIN 3 METRES OF OIL FUEL PIPELINES MUST RECEIVE PRIOR APPROVAL	900mm ALL WORK WITHIN 3 METRES OF OIL FUEL PIPELINES MUST RECEIVE PRIOR APPROVAL
SEWERAGE	BLACK	NO DISTINGUISHING COLOUR MATERIAL (eg. DUCTILE IRON MAY BE RED, PVC MAY BE BROWN)	NA	NA	VARIABLE	VARIABLE
TELECOMS	GREY, WHITE, GREEN, BLACK OR PURPLE	N/A	BLACK OR LIGHT GREY	VARIOUS	250-300mm	450-600mm
WATER	BLUE OR GREY	BLUE POLYMER OR BLUE UNCOATED IRON/GRP. BLUE POLYMER WITH BROWN STRIPE (REMOVABLE SKIN REVEALING WHITE OR BLACK PIPE)	NA	BLUE OR BLUE/BLACK	750mm	750mm MINIMUM
WATER PIPES FOR SPECIAL PURPOSES (eg. CONTAMINATED GROUND)	N/A	BLUE POLYMER WITH BROWN STRIPES (NON-REMOVABLE SKIN)	NA	BLUE OR BLUE/BLACK	750mm	750mm MINIMUM



10m SCALE 1:500



POSSIBLE POINT OF CONNECTION  
 CONNECTION INTO THE EXISTING CHAMBER  
 POSSIBLE CONNECTION ONTO THE EXISTING GAS MAIN  
 POSSIBLE EXTENSION TO THE EXISTING WATER MAIN

RESIDUAL RISK REGISTER			
NO.	DESCRIPTION OF HAZARD	CONTROL MEASURES	ACTION BY
1	UNIDENTIFIED SERVICES AND SERVICES IDENTIFIED IN AREAS LOCATED	IDENTIFICATION OF EXISTING UNDERGROUND SERVICES (RECONSTRUCTION AND CAT JOINING OF GROUND)	CONTRACTOR
		CAREFUL EXCAVATION USING SLOT TRENCHES AND CAT JOINING OF AREAS	

- NOTES**
- THE PLAN OF THE VARIOUS SERVICES IS SHOWN FOR GENERAL GUIDANCE ONLY. CONTRACTORS AND SUB-CONTRACTORS SHALL OBTAIN SPECIFIC DETAILS FROM THE RELEVANT SERVICES SHIPPER/PROVIDER FOR EXACT POSITION OF APPARATUS AND ANY ASSOCIATED WORKS & COSTS DURING THE TENDER PERIOD.
  - WORKING PRACTICES AND RECOMMENDATIONS SHALL BE OBTAINED FROM EACH SERVICE PROVIDER/SHIPPER DURING THE TENDER PERIOD AND PRIOR TO COMMENCEMENT ON SITE. REFER TO HSE BOOKLET HS674 ENTITLED 'AVOIDING DANGER FROM UNDERGROUND SERVICES' AND OTHER LITERATURE PUBLISHED BY THE RELEVANT SERVICE PROVIDERS/SHIPPER.
  - IT IS RECOMMENDED THAT BEFORE ANY GROUND WORKS COMMENCE SERVICES ARE LOCATED UTILISING SUITABLE EQUIPMENT AND SLOT TRENCHES.
  - LINES SHOWING EXISTING SERVICES HAVE BEEN REPRODUCED FROM THE OBTAINED SERVICE PROVIDER/SHIPPER RECORD PLANS & SURVEY INFORMATION, AND MAY NOT ACCURATELY DETAIL ALL SERVICES OR THEIR LOCATIONS. OTHER PRIVATELY OWNED SERVICES MAY BE PRESENT IN A VICINITY OF THE WORKS. A SINGLE LINE MAY REPRESENT MORE THAN ONE SERVICE. ENGINEERING SERVICES CONSULTANTS LTD ACCEPTS NO RESPONSIBILITY WHATSOEVER FOR THE ACCURACY OF INFORMATION PROVIDED ON THIS DRAWING.
  - THE CONTRACTOR IS RESPONSIBLE FOR OBTAINING UP-TO-DATE RECORD INFORMATION, FROM ALL SERVICE PROVIDERS/SHIPPER, AT THE TIME OF COMMENCEMENT OF WORKS.
  - OVERHEAD APPARATUS MAY BE PRESENT AND SHOWN ON THIS DRAWING.
  - PRIVATELY OWNED AND OPERATED SERVICES MAY BE PRESENT AND MAY NOT BE SHOWN ON THIS PLAN, INCLUDING THOSE OF THE CENTRAL GOVERNMENT, MINISTRY OF DEFENCE, UNIVERSITIES, RAILWAY COMPANIES, THE LOCAL AUTHORITIES, OR OTHER INSTITUTIONS, COMPANIES AND SERVICES.
  - FINAL LOCATION OF INTERNAL METER LOCATIONS TO BE CO-ORDINATED WITH THE INTERNAL LAYOUTS.

- LEGEND**
- HV ELECTRICITY SERVICE
  - LV ELECTRICITY SERVICE
  - ELECTRIC SUBSTATION
  - ELECTRICITY METER LOCATION
  - WATER SUPPLY
  - WATER METER LOCATION
  - WATER HYDRANT LOCATION
  - WATER WASH OUT LOCATION
  - GAS SUPPLY
  - GAS METER KIOSK LOCATION
  - BT SERVICE ROUTE
  - TELECOM CHAMBER
  - FINAL LOCATION TO BE AGREED WITH BT
  - PI
  - TP-N
  - PS
  - SUPPLY FOR PETROL INTERCEPTOR
  - TPAN SUPPLY TO SERVE THE PUMPING STATION
  - 100MM DIA ELECTRIC VEHICLE CHARGING DUCT
  - 100MM DIA SPARE DUCT

T1 18.05.22 Tender Issue CP  
 Rev: Date Details Initials  
 Engineering Services Consultancy Ltd  
 Griffin House  
 19 Ludgate Hill  
 Birmingham  
 B3 1DW  
 T: 0121 214 8998  
 F: 0121 214 8999  
 W: www.esccuk.com  
 Client

Project  
**Axis J9  
 Bicester  
 Phase 3**  
 Drawing Title  
**Proposed Utilities Layout**

**TENDER ISSUE**

Purpose  
 Design  
 DM JK/DM CP  
 Project No.  
 1746  
 Date  
 May 2022  
 Scale @ A2  
 1:500  
 Drawing No.  
 1746-ESC-ZZ-ZZ-DR-Z-1000 T1

THIS DRAWING IS FOR INFORMATION ONLY TO DEMONSTRATE DESIGN INTENT AND REPRESENTS THE AGREED SERVING STRATEGY AND MINIMUM STANDARDS TO BE ACHIEVED. WHERE ADDITIONAL DETAILS HAVE BEEN SHOWN, THIS HAS BEEN PROVIDED IN ORDER TO CONVEY GREATER UNDERSTANDING OF THE CONCEPTUAL REQUIREMENTS AND SHALL NOT BE TAKEN AS DETAILED DESIGN.

IT HAS NOT BEEN PRODUCED TO ACCURATE DESIGN CALCULATIONS AND SHALL NOT BE USED FOR INSTALLATION PURPOSES.

THE CONTRACTOR WILL BE RESPONSIBLE FOR THE DESIGN OF THE ENGINEERING SERVICES IN ACCORDANCE WITH THE DESIGN AND BUILD CONTRACT. PLANT SIZING IS INDICATIVE AND THE CONTRACTOR SHALL BE FULLY RESPONSIBLE FOR THE DETAILED DESIGN OF ALL PLANT AND EQUIPMENT.

THIS DRAWING SHALL BE READ IN CONJUNCTION WITH ALL CONTRACT DOCUMENTS, PROJECT SPECIFICATIONS AND DRAWINGS.