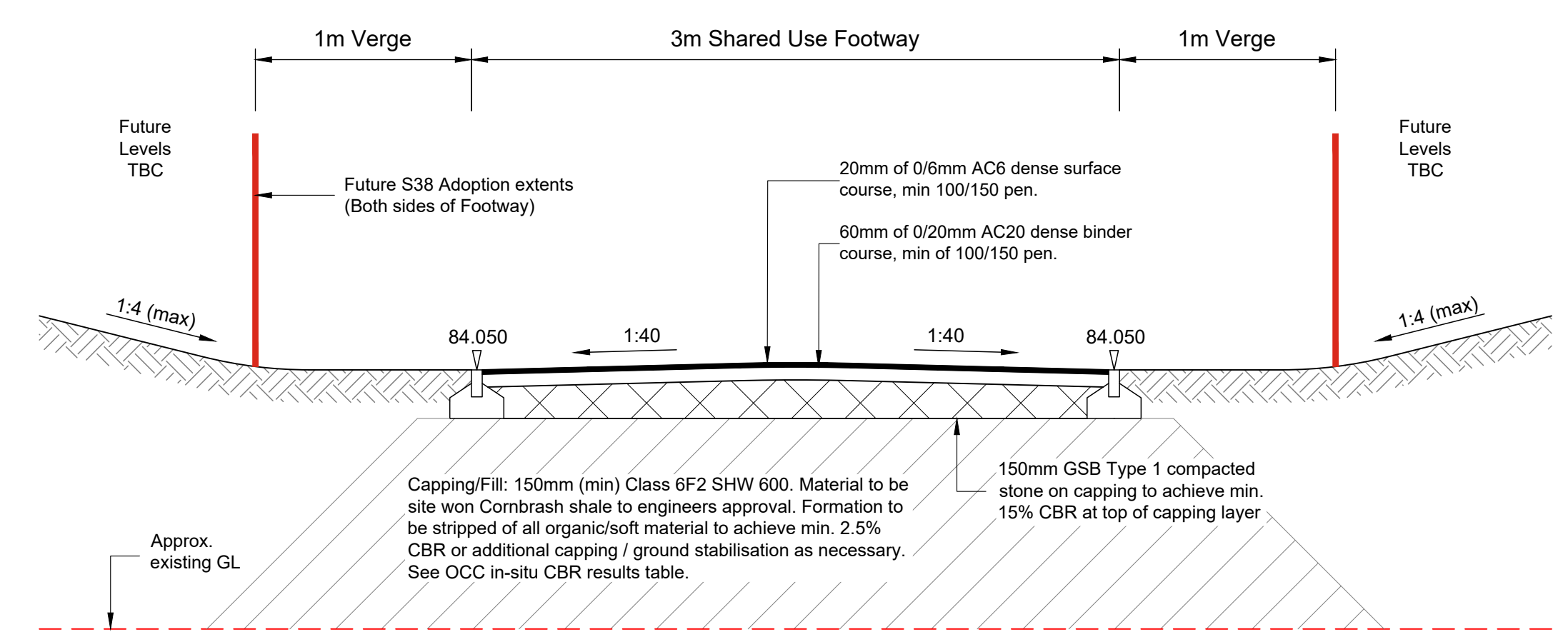
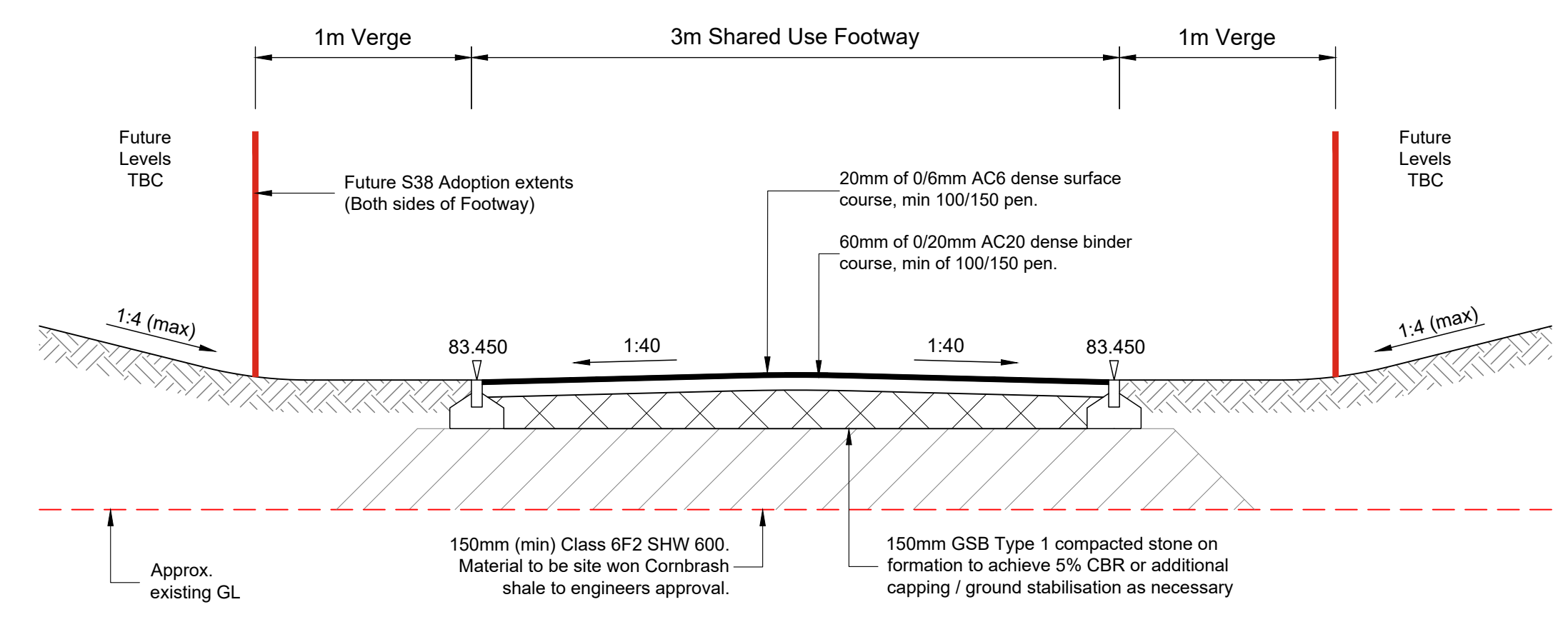


NOTES

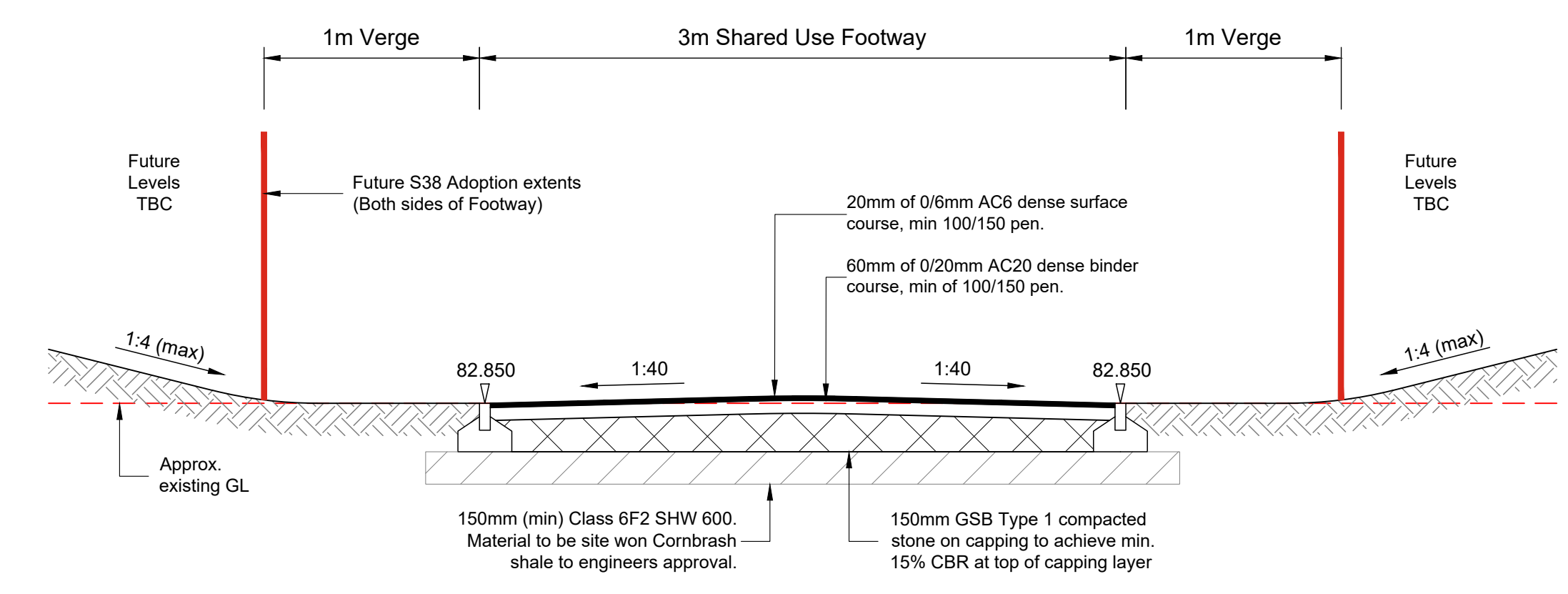
1. This drawing is to be read in conjunction with all relevant Architects and Bailey Johnson Hayes drawings and specifications.
2. Do not scale. Work only to figured dimensions.
3. All dimensions to be confirmed on site prior to commencement of work.
4. Proposed Layout in accordance with planning approved Access Road General Arrangement Plan 14042-60-GA (N).
5. All works subject to agreement by Oxfordshire County Council (OCC) Road Agreements department.
6. This document contains OS data © Crown copyright 2019.



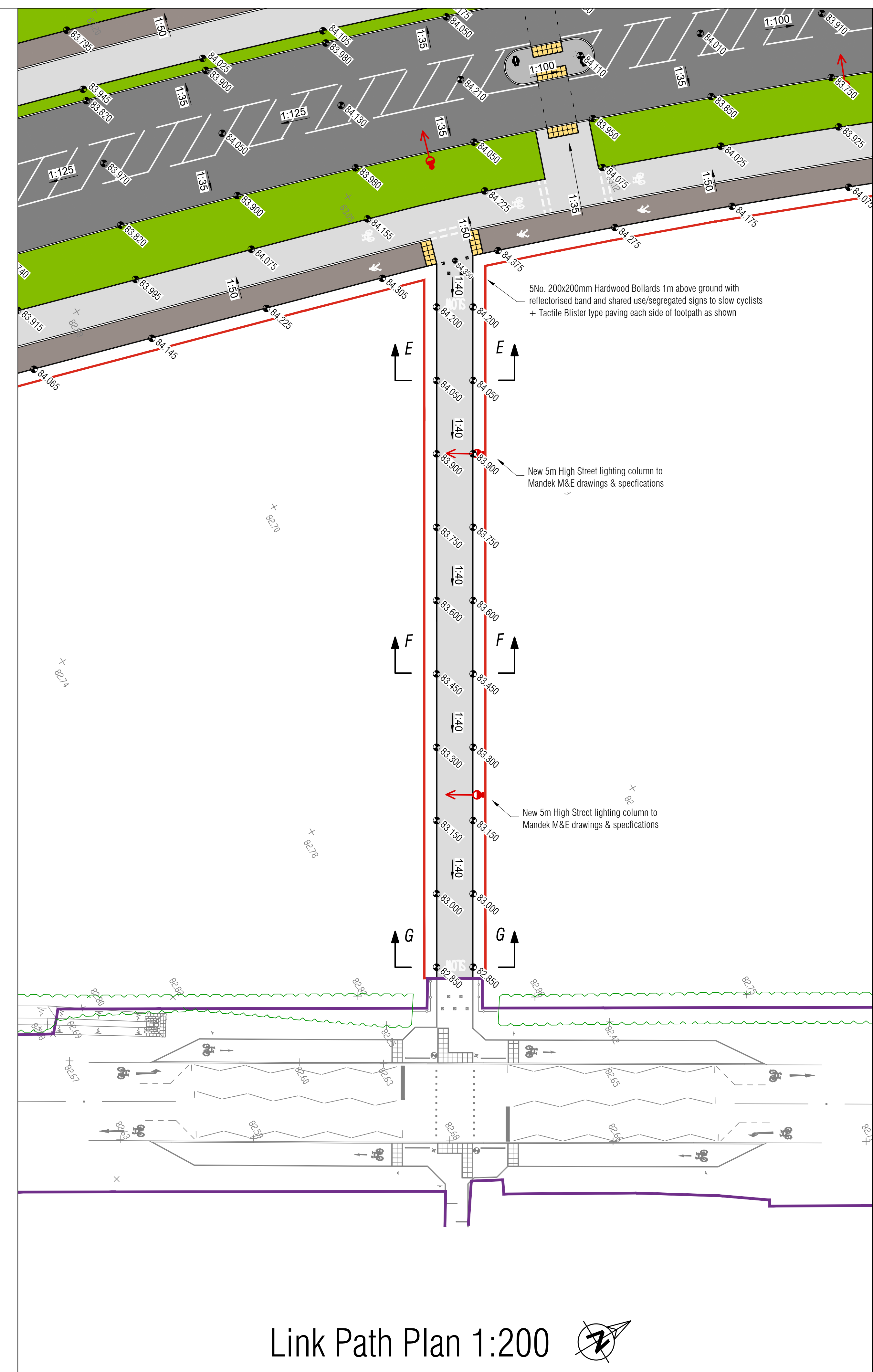
Section E-E 1:25



Section F-F 1:25



Section G-G 1:25



Link Path Plan 1:200

SLR CONTRIBUTION AGREEMENT

Rev	Date	Revision Description
D	03.11.23	Updated to latest Street Lighting Layout
C	29.08.23	Revised to Technical Audit 1 comments
B	12.06.23	Annotation added to lightening columns
A	30.05.23	Revised to RSA 2 comments

Revision Schedule

Project Title
Axis J9 - Bicester



Drawing Title
**Access Road (Phase 3)
Link Path Details**

BAILEY JOHNSON HAYES
Consulting Engineers
ST. ALBANS: Suite 4, Phoenix House, 63 Campfield Rd, ST. ALBANS, Herts AL1 5FL

Scale	1:200, 25 @A1	Drawing Number	S1209-AR-13 D
Date	06.04.23		
Drawn	JNG		