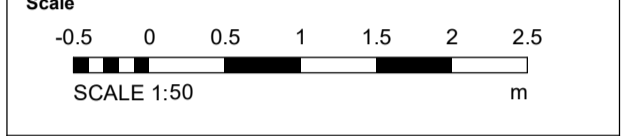


**Notes:**  
 Do not scale off this document/drawing/model for any purposes other than those required in connection with the application for planning consent for the project. This document/drawing/model is prepared for the sole use of EPR Architects' employer and the benefit of the employer's permitted licensees. No liability to any other persons is accepted by EPR Architects.  
 EPR Architects accepts no liability for any use of this document/drawing/model by parties other than the party for whom it was prepared or for purposes other than those for which it was prepared.  
 The area information contained in this document/drawing/model/schedule reflects the anticipated approximate areas of the project based on the current state of the design. The areas/dimensions have been calculated generally in accordance with the RICS Code of Measuring Practice, 6th Edition and have been calculated in metric units and expressed in both metric and imperial units. Where there is a discrepancy, the metric units take precedence.



- Key:**
- WA-1- Stone
  - WA-2- Light cream render
  - WA-3- Timber cladding
  - WA-4- Green coloured metal corrugated cladding
  - WA-5- Concrete panels
  - WA-6- Engineering buff brick
- RF-1- Dark red roof tiles  
 RF-2- Dark grey roof tiles  
 RF-3- Green corrugated metal cladding
- WI-1- Dark slate grey metal window frame  
 WI-2- Cream metal window frame  
 WI-3- Light grey metal window frame  
 WI-4- Glass
- DR-1- Light grey metal door frame  
 DR-2- Grey metal barn doors - fixed  
 DR-3- Dark slate grey door frame  
 DR-4- Cream metal door frame  
 DR-5- Louvred Doors
- DT-1- Stone facade detailing  
 DT-2- Metal coping  
 DT-3- Dark grey gutter  
 DT-4- Dark grey downpipe  
 DT-5- Timber  
 DT-6- Timber board for sign  
 DT-7- Concrete  
 DT-8- Metal decorative element  
 DT-9- Light grey metal window sill  
 DT-10- Dark slate grey metal window sill  
 DT-11- Metal louvres  
 DT-13- Multi-coloured water slides  
 DT-14- Roller shutter
- EQ-1- Flue  
 EQ-2- Air handling unit  
 EQ-3- PV panels

- Notes:**
1. Stonework, render, cladding & roof tile patterns indicative - shown for illustrative purposes.
  2. This drawing has been prepared for use in connection with the application for planning consent for the project only.
  3. This document/drawing/model contains design information provided by a third party which is included for reference purposes only. This design information has not been checked or verified by EPR Architects and EPR Architects accepts no liability for it.

No.	Revision	Date	Initial	Chkd
C01	Planning Amendment Issue	08.02.23	VM	AJ
P05	S2 - Planning Addendum Issue	10.12.21	NG	AJ
P04	S2 - Planning draft issued for Information	07.12.21	NG	AJ
P03	Planning Issue	08.11.19	LGO	AJ
P02	Preliminary Planning Issue	30.10.19	LGO	AJ
P01	Preliminary Planning Issue	25.10.19	LGO	CT

**EPR ARCHITECTS**  
 +44 20 7312 7600  
 www.epr.co.uk

Proposed Great Wolf Lodge - Chesterton, Bicester, Oxfordshire  
 EPR Project No 10875

Bay G  
 Proposed Typical Bay Study - Waterpark

Scale @A1 Purpose of Issue Status code Revision  
 As indicated Published A4 - C01

Project Code Originator Zone Level Type Rate Class Number  
 10875 - EPR - 00 - XX - DR - A - TP-4107