

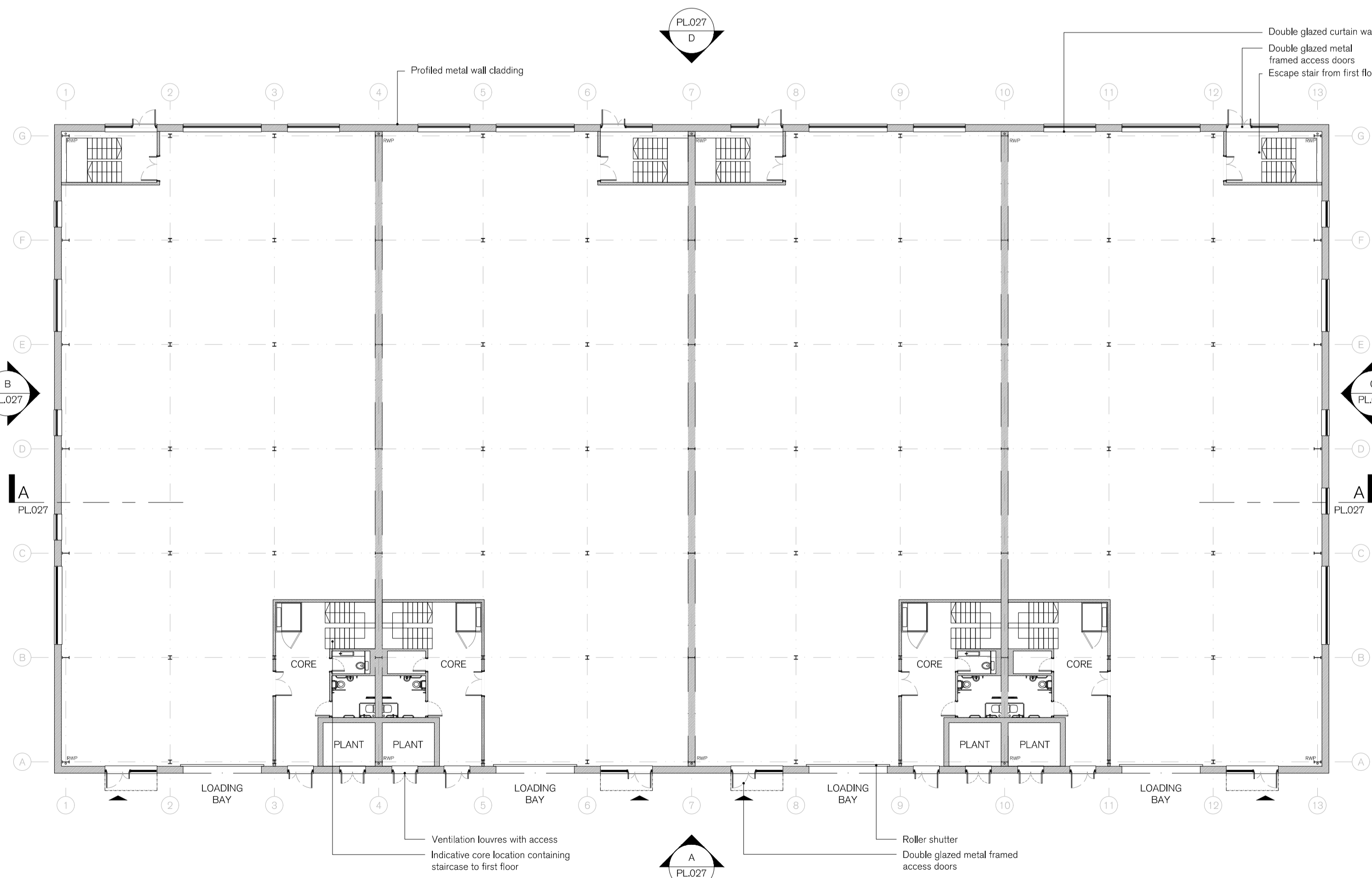
First Floor Plan
1:200

Double glazed metal framed windows with extruded pressed metal reveals

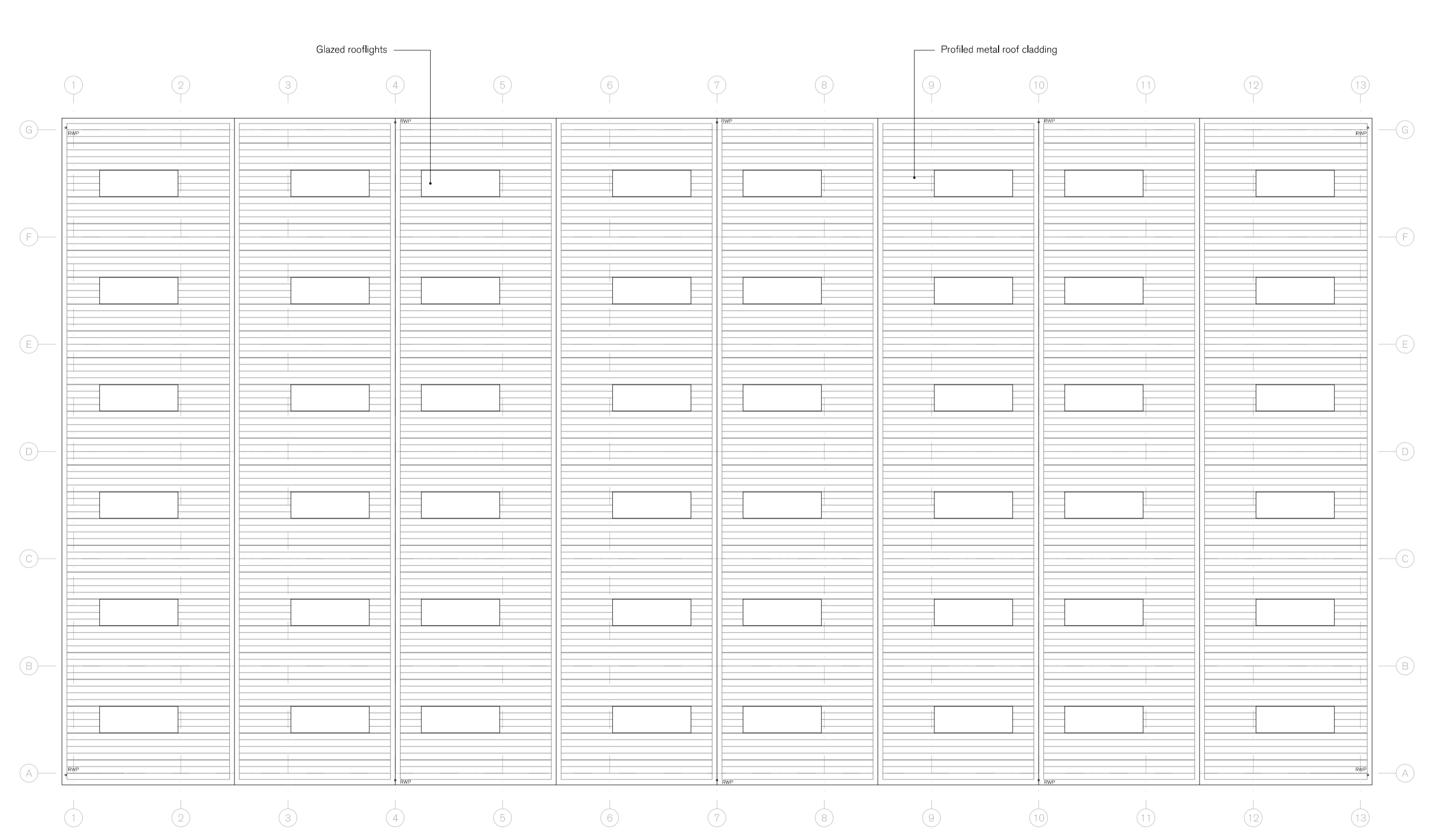
Profiled metal wall cladding



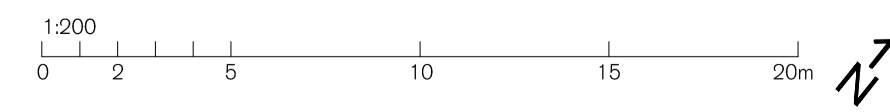
Key Plan
1:2000



Ground Floor Plan
1:200



Roof Plan
1:200



SPRATLEY & PARTNERS
7 CENTENARY BUSINESS PARK, STATION ROAD, HENLEY-ON-THAMES, OXFORDSHIRE RG9 1DS, 01491 411277
ISSUED ONLY FOR THE PURPOSE INDICATED. THIS DRAWING TO BE READ IN CONJUNCTION WITH ALL CONSULTANTS INFORMATION. ALL DIMENSIONS TO BE CHECKED ON SITE, DO NOT SCALE. THIS DRAWING IS COPYRIGHT.

REV.	ISSUED	DESCRIPTION	DRAWN	CHECKED
A	03.03.2023	First Floor glazing amended.	AM	GT
-	-	-	-	-
-	-	-	-	-

PROJECT
London Oxford Airport,
The Blvd., Kidlington, Oxon,
OX5 1GB

DESCRIPTION
Building D
Plans

DATE
Oct' 2022

SCALE AT A1
1:200

STATUS
PLANNING

JOB NO
21.926

DRAWING NO
PL.026

DRAWN
FW

CHECKED
GT

REV
A

S
& P