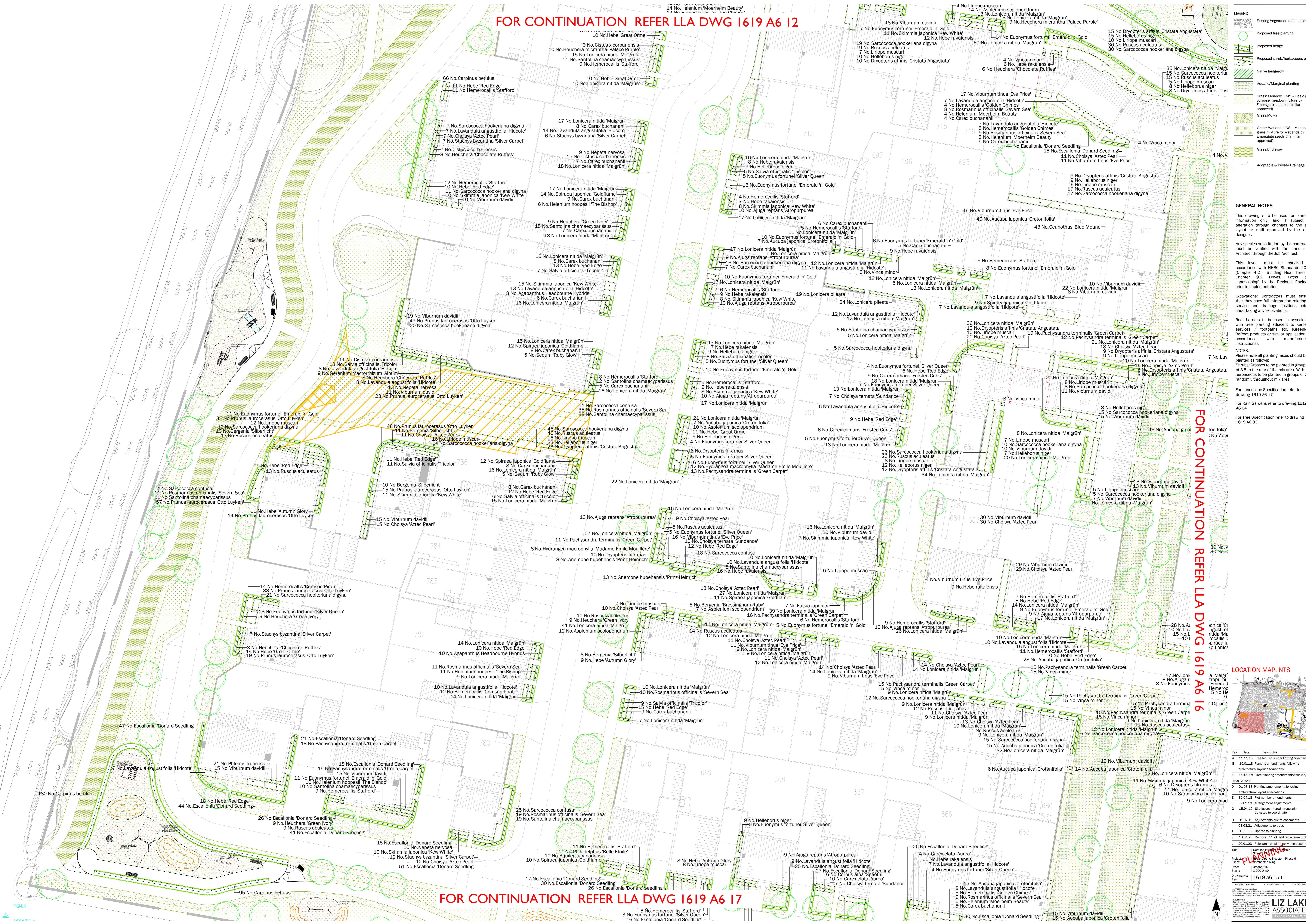


FOR CONTINUATION REFER LLA DWG 1619 A6 12



**LEGEND**

- Existing Vegetation to be retained
- Proposed tree planting
- Proposed shrub/herbaceous planting
- Native hedgerow
- Aquatic/Marginal planting
- Grass: Meadow (EM1 - Basic general purpose meadow mixture by Ennonga seeds or similar approved)
- Grass: Wetland (EG8 - Meadow grass mixture for wetlands by Ennonga seeds or similar approved)
- Grass: Bridgeway
- Adoptable & Private Drainage

**GENERAL NOTES**

This drawing is to be used for planting information only, and is subject to alteration through changes to the site layout or until approved by the area designer.

Any species substitution by the contractor must be verified with the Landscape Architect through the Job Architect.

This layout must be checked in accordance with NHC Standards 2013 (Chapter 4.2 - Building Near Trees & Chapter 9.2 Drives, Paths and Landscaping) by the Regional Engineer prior to implementation.

Excavations: Contractors must ensure that they have full information relating to service and drainage positions before undertaking any excavations.

Root barriers to be used in association with tree planting adjacent to kerbs / services / footpaths etc. (Greenleaf ReRoot products or similar application, in accordance with manufacturers instructions).

NOTES:

Please note all planting mixes should be planted as follows:

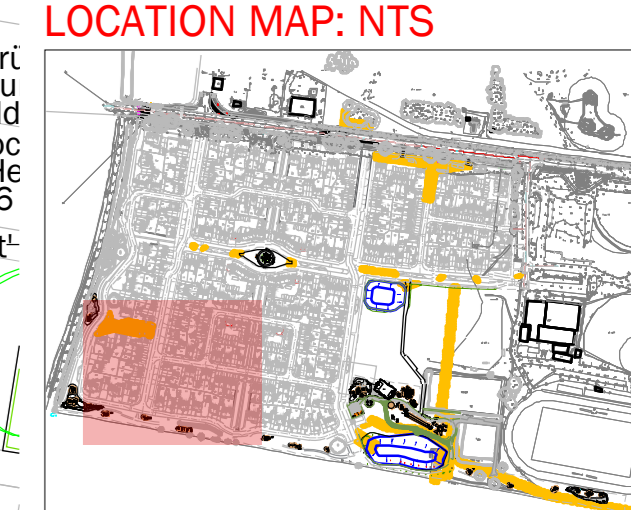
Shrubs/Grasses to be planted in groups of 3 to 5 to the rear of the mix area. With herbaceous to be planted in groups of 3 randomly throughout mix area.

For Landscape Specification refer to drawing 1619 A6 17

For Rain Gardens refer to drawing 1619 A6 04

For Tree Specification refer to drawing 1619 A6 03

FOR CONTINUATION REFER LLA DWG 1619 A6 16



Rev	Date	Description
A	11.11.16	Tree No. reduced following comments
B	15.01.16	Planting amendments following architectural layout alterations
C	09.02.16	Tree planting amendments following tree removal
D	01.03.16	Planting amendments following architectural layout alterations
E	30.04.16	Plot number amendments
F	07.09.16	Arrangement Adjustments
G	25.04.19	Site layout amended, proposals adjusted to coordinate
H	31.07.19	Adjustments due to easements
I	03.03.21	Adjustments to trees
J	31.03.22	Update to planting
K	13.01.23	Remove T1156, add replacement planting
L	20.11.23	Relocate tree planting within easement

Title: Details Phase 9  
 Project: Southstar Living  
 Date: 15.01.2020  
 Scale: 1:2000 @ A0  
 Drawing No: 1619 A6 15 L  
 Rev: 1

**PLANNING**

**LIZ LAKE ASSOCIATES**

FOR CONTINUATION REFER LLA DWG 1619 A6 17