

LEGEND

 Existing Vegetation to be retained
 Proposed Trees

GENERAL NOTES

This drawing is to be used for planting information only, and is subject to alteration through changes to the site layout or until approved by the area designer.

Any species substitution by the contractor must be verified with the Landscape Architect through the Job Architect.

This layout must be checked in accordance with NHC Standards 2013 (Chapter 4.2 - Building Near Trees & Chapter 9.2 Drives, Paths and Landscaping) by the Regional Engineer prior to implementation.

Excavations: Contractors must ensure that they have full information relating to service and drainage positions before undertaking any excavations.

Root barriers to be used in association with tree planting adjacent to kerbs / services / footpaths etc. (Greenleaf ReRoot products or similar application, in accordance with manufacturer's instructions).

For Landscape Specification refer to drawing 1619 A6 17



TREES

Number	Abbreviation	Plant Name	Height	Girth	Specification
9-	A ca	Acer campestre	500-550cm	20-25cm	Semi-Mature: 3x; RB: Clear Stem min. 200cm
37-	A ca 'S'	Acer campestre 'Sorewellia'	400-450cm	18-20cm	Extra Heavy Standard: 3x; RB: Clear Stem min. 200cm
12-	A psi	Acer pseudoplatanus	550-600cm	25-30cm	Semi-Mature: 4x; RB: Clear Stem min. 200cm
9-	A col	Alnus cordata	400-450cm	14-16cm	Extra Heavy Standard: C; Clear Stem min. 200cm
6-	A gl	Alnus glutinosa	400-450cm	14-16cm	Large Feathered: 7 brks; 3x; RB
9-	A gl 'T'	Alnus glutinosa 'Imperialis'	400-450cm	14-16cm	Extra Heavy Standard: 3x; RB: Clear Stem min. 200cm
53-	A x g 'R H'	Amanitancher x grandiflora 'Robin Hill'	450-475cm	16-18cm	Extra Heavy Standard: 3x; RB: Clear Stem min. 200cm
25-	B ni	Betula nigra	450-500cm	18-20cm	Extra Heavy Standard: 3x; RB: Clear Stem min. 200cm
38-	C be	Carpinus betulus	350-425cm	20-25cm	4x; Large Feathered: RB
22-	C be 'F F'	Carpinus betulus 'Frans Fontaine'	450-500cm	18-20cm	Extra Heavy Standard: 3x; RB: Clear Stem min. 200cm
5-	C be 'F F'	Carpinus betulus 'Frans Fontaine'	550-600cm	25-30cm	Semi-Mature: 4x; RB: Clear Stem min. 200cm
24-	J r	Juglans regia	600-650cm	30-35cm	Semi-Mature: 4x; RB: Clear Stem min. 200cm
60-	T co 'G'	Tilia cordata 'Greenspire'	550-600cm	25-30cm	Semi-Mature: 4x; RB: Clear Stem min. 200cm
1-	T co 'G'	Tilia cordata 'Greenspire'	600-650cm	30-35cm	Semi-Mature: 4x; RB: Clear Stem min. 200cm

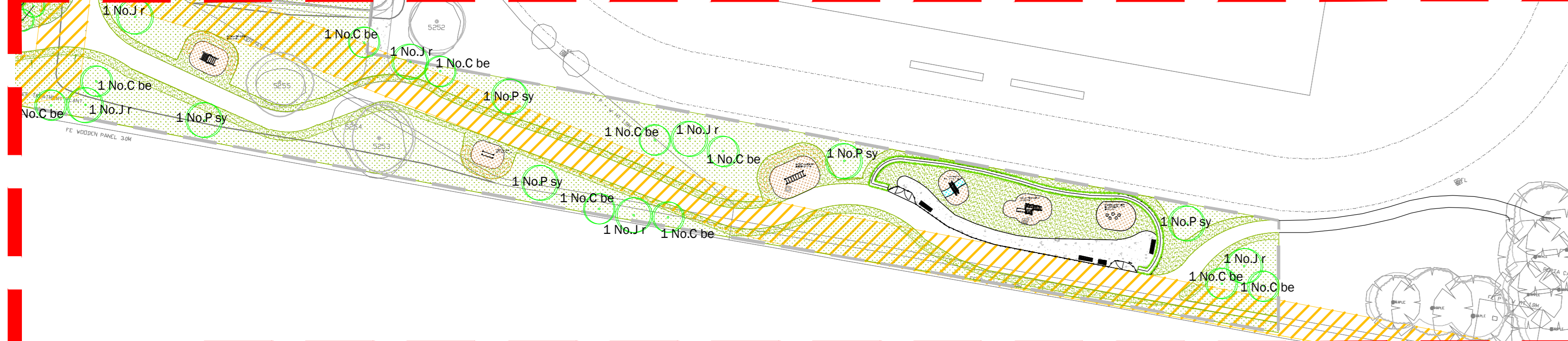
Total: 310

CONFERS

Number	Plant Name	Height	Specification	Density	Abbreviated Text
16-	Pinus sylvestris	300-350cm	Leader with Laterals: 5x; RB: Clear Stem min. 200cm	Counted	P sy

Total: 16

SOUTH EAST CORNER INSERT



FOR CONTINUATION REFER TO INSERT

Rev	Date	Description
A	11.11.16	Tree list reduced following comments
B	23.01.18	Tree planting amendments following updated layout.
C	09.02.18	Tree planting amendments following tree removal.
D	01.03.18	Tree planting amendments following layout amendments
E	30.04.18	Plot number amendments
F	07.09.18	Road, Intervention & Planting adjustments
G	15.04.19	Site layout altered, proposals adjusted to coordinate
H	31.07.19	Adjustments due to easements
I	26.11.20	Adjustments to basin & trees
J	27.11.20	Adjustments planting around basin
K	03.03.21	Adjustments planting around basin
L	10.06.21	Adjustments planting and basin
M	13.01.23	Remove 11158, add replacement planting
N	20.03.23	Rebase tree planting upon assessment

Title: Detailed Tree Planting Proposal

Project: [Redacted] - Phase 9
 Client: [Redacted]
 Date: 15/03/23
 Scale: 1:500 @ A0
 Drawing No: 1619 A6 03 N
 Rev: [Redacted]