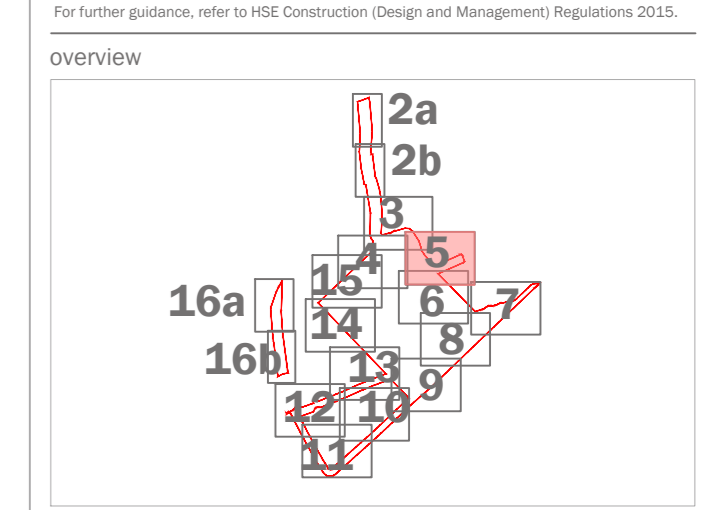




- Feathered Native Tree Mix**  
 No. 47 Acer campestre 10% 175-200cm  
 No. 93 Alnus glutinosa 20% 175-200cm  
 No. 139 Crataegus monogyna 30% 125-150cm  
 No. 93 Ilex aquifolium 20% 150-175cm  
 No. 47 Prunus avium 10% 150-175cm  
 No. 47 Sorbus aucuparia 10% 125-150cm
- Native Shrub Mix**  
 No. 320 Cornus sanguinea 10% 60-80cm  
 No. 494 Corylus avellana 15% 40-60cm  
 No. 659 Crataegus monogyna 20% 60-80cm  
 No. 231 Eucornus europaeus 7% 60-80cm  
 No. 165 Ilex aquifolium 5% 40-60cm  
 No. 330 Ligustrum vulgare 10% 60-80cm  
 No. 165 Prunus lusitanica 5% 60-80cm  
 No. 231 Prunus spinosa 7% 60-80cm  
 No. 99 Rosa canina 3% 60-80cm  
 No. 66 Sambucus nigra 2% 60-80cm  
 No. 64 Taxus baccata 8% 40-60cm  
 No. 64 Viturnum opulus 8% 60-80cm

- Site boundary
- Existing Trees and Tree Groups to be Retained  
Refer to the Arboricultural Report
- Existing Hedgerows to be Retained  
Refer to the Arboricultural Report
- Proposed Tree Planting
- Proposed Hedgerow Planting
- Proposed Turf  
Product: Medallion Turf or similar  
Supplier: Robson
- Proposed Flowering Lawn Mixture  
Product: E1 Flowering Lawn Mixture  
Supplier: Emongate Seeds  
Sowing rate: 4g/m<sup>2</sup>
- Proposed Species-Rich Meadow Grass  
Product: EM3 Basic General Purpose Meadow Mixture  
Supplier: Emongate Seeds  
Sowing rate: 4g/m<sup>2</sup>
- Proposed Tussock Grass Mixture  
Product: E620 Tussock Grass Mixture  
Supplier: Emongate Seeds  
Sowing rate: 5g/m<sup>2</sup>
- Proposed Hedgerow Grass Mixture  
Product: E13 Hedgerow Mixture  
Supplier: Emongate Seeds  
Sowing rate: 5g/m<sup>2</sup>
- Proposed Ornamental Planting
- Proposed Bulb Planting
- Proposed Native Swards Planting
- Proposed Native Feathered Tree and Shrub Mix
- Proposed Wetland Meadow Grass to Attenuation Basin  
Product: E68 Meadow Grass Mixture for Wet Soils  
Supplier: Emongate Seeds  
Sowing rate: 4g/m<sup>2</sup>
- Proposed Diverted Watercourse  
Refer to Engineers drawings for details
- Extent of Structural Soil/ Underground Crate System  
To ensure required rooting volumes for tree planting
- Proposed Gravel for Maintenance Access
- Proposed Footpath  
Bridges over footpaths with timber edging. No tie construction
- Proposed Boundary Fenceline  
Refer to Architects drawings for details
- Proposed Trim Trail  
Indicative locations of trim trail/ outdoor fitness equipment along proposed trim trail route
- Proposed Earth Mounding  
with max. 2.1 slope ratio
- Proposed Root Barriers  
Product: Rootbar Barrier (to be confirmed by Engineer)  
Supplier: GreenBlue Urban or similar approved
- Ecological Buffer Zone  
5m buffer from Wendesbury Brook

- A risk assessment has been carried out on this design. Residual risks following this process are listed below. A copy of the full Design Risk Register is also available on request from EDP.
1. Soft landscaping implementation within a construction environment (across the site).
  2. Installing trees (across the site).
  3. Water bodies (attenuation ponds and swales).
  4. Working within close proximity of underground services.
  5. Planting on slopes and
  6. Working within close proximity of highways.
- For further guidance, refer to HSE Construction (Design and Management) Regulations 2015.



purpose of issue **PLANNING**

| rev | description | date       | by  |
|-----|-------------|------------|-----|
| 1   | Approved    | 18-10-2022 | LCH |
| 2   | Amended     | 06-07-2022 | LCH |
| 3   |             | 04-07-2022 | LCH |

client  
**Trifax Symmetry Ltd and Siemens Healthineers**

project title  
**Symmetry Park, Oxford North**

drawing title  
**Detailed Landscape Proposals**

date **18 OCTOBER 2022** drawn by **LTI** Sheet 5 of 17

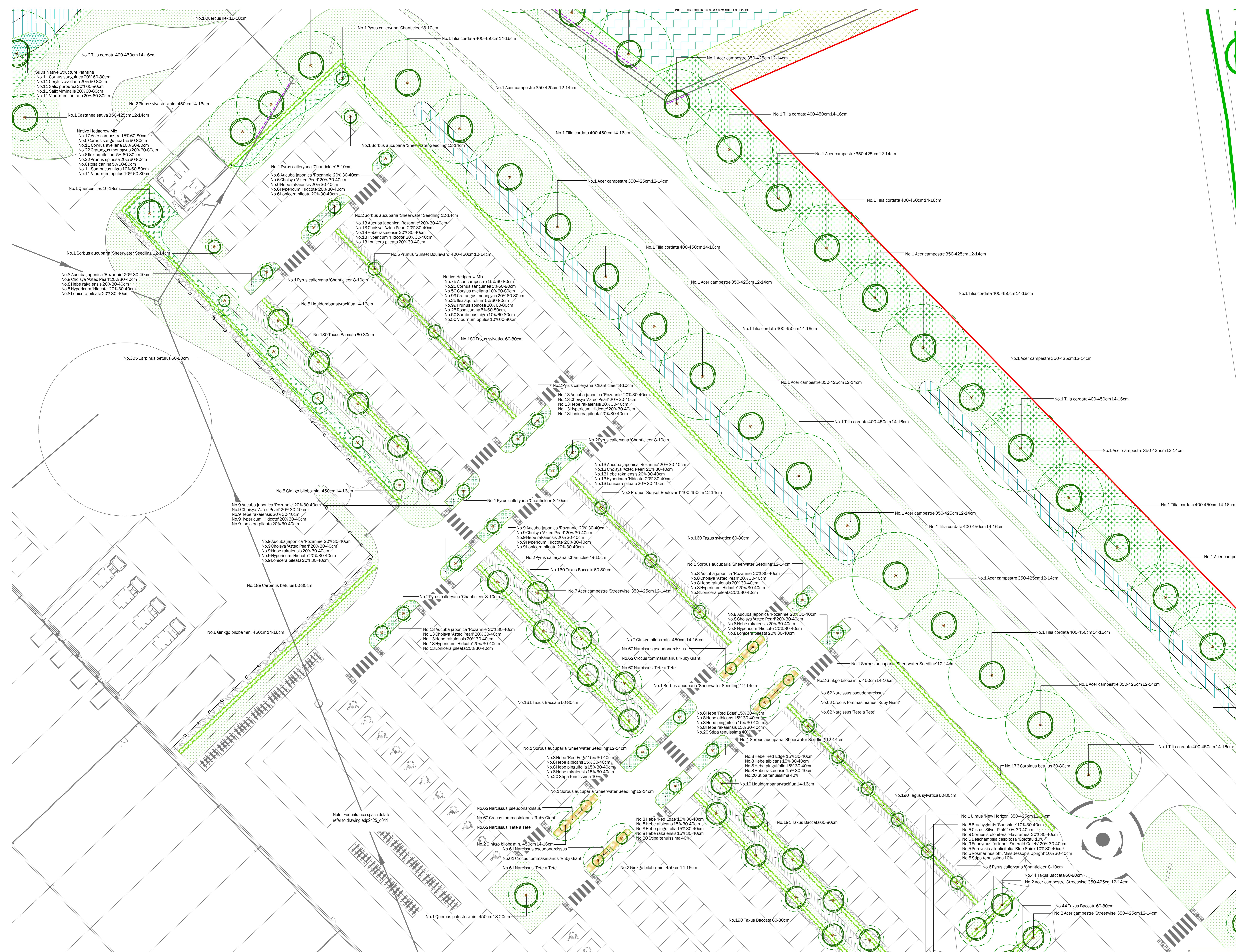
drawing number **edp2425\_60171** checked by **BC**

scale **1:200 @ A0** QA **RB**

the environmental dimension partnership

Registered office: 01285 740427 www.edp-uk.co.uk info@edp-uk.co.uk



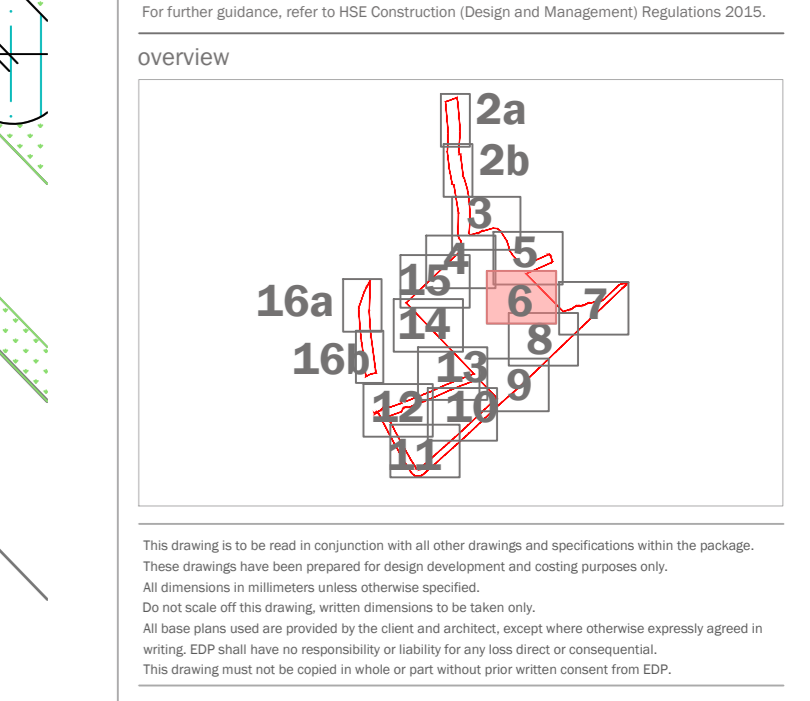


- Site boundary
- Existing Trees and Tree Groups to be Retained
- Existing Hedgerows to be Retained
- Proposed Tree Planting
- Proposed Hedgerow Planting
- Proposed Turf
- Proposed Flowering Lawn Mixture
- Proposed Species-Rich Meadow Grass
- Proposed Tussock Grass Mixture
- Proposed Hedgerow Grass Mixture
- Proposed Ornamental Planting
- Proposed Bulb Planting
- Proposed Native Sward Planting
- Proposed Native Feathered Tree and Shrub Mix
- Proposed Wetland Meadow Grass to Alteration Basin
- Proposed Diverted Watercourse
- Extent of Structural Soil/ Underground Crate System
- Proposed Footpath
- Proposed Boundary Fencing
- Proposed Trim Trail
- Proposed Earth Mounding
- Proposed Root Barriers
- Ecological Buffer Zone

- Refer to the Arboricultural Report
- Refer to the Arboricultural Report
- Product: Medation Turf or similar Supplier: Ribston
- Product: E60 Flowering Lawn Mixture Supplier: Emerald Seeds Sowing rate: 4g/m<sup>2</sup>
- Product: E34 Basic General Purpose Meadow Mixture Supplier: Emerald Seeds Sowing rate: 4g/m<sup>2</sup>
- Product: E60 Tussock Grass Mixture Supplier: Emerald Seeds Sowing rate: 5g/m<sup>2</sup>
- Product: E61 Hedgerow Mixture Supplier: Emerald Seeds
- Refer to Engineers drawings for details
- Refer to Architects drawings for details
- indicate locations of tree trails/ outdoor fitness equipment along proposed trim trail route
- with min. 2.1 slope
- Refer to Engineers drawings for details
- Product: Ribston Green/Blue Urban or similar approved
- 5m buffer from Wentley Brook

A risk assessment has been carried out on this design. Residual risks following this process are listed below. A copy of the full Design Risk Register is also available on request from EDP.

- Soft landscaping implementation within a construction environment (across the site).
- Installing trees (across the site).
- Water bodies (retention ponds and swales).
- Working within close proximity of underground services.
- Planting on slopes and
- Working within close proximity of highways.



purpose of issue **PLANNING**

| Rev | Description | Date       | By  |
|-----|-------------|------------|-----|
| 1   | Issued      | 18-10-2022 | LH  |
| 2   | Amended     | 06-07-2022 | LCH |
| 3   |             | 01-07-2022 | LCH |

client **TriTux Symmetry Ltd and Siemens Healthineers**

project title **Symmetry Park, Oxford North**

drawing title **Detailed Landscape Proposals**

date **18 OCTOBER 2022** drawn by **LH**

drawing number **edp2425\_06171** checked by **BC**

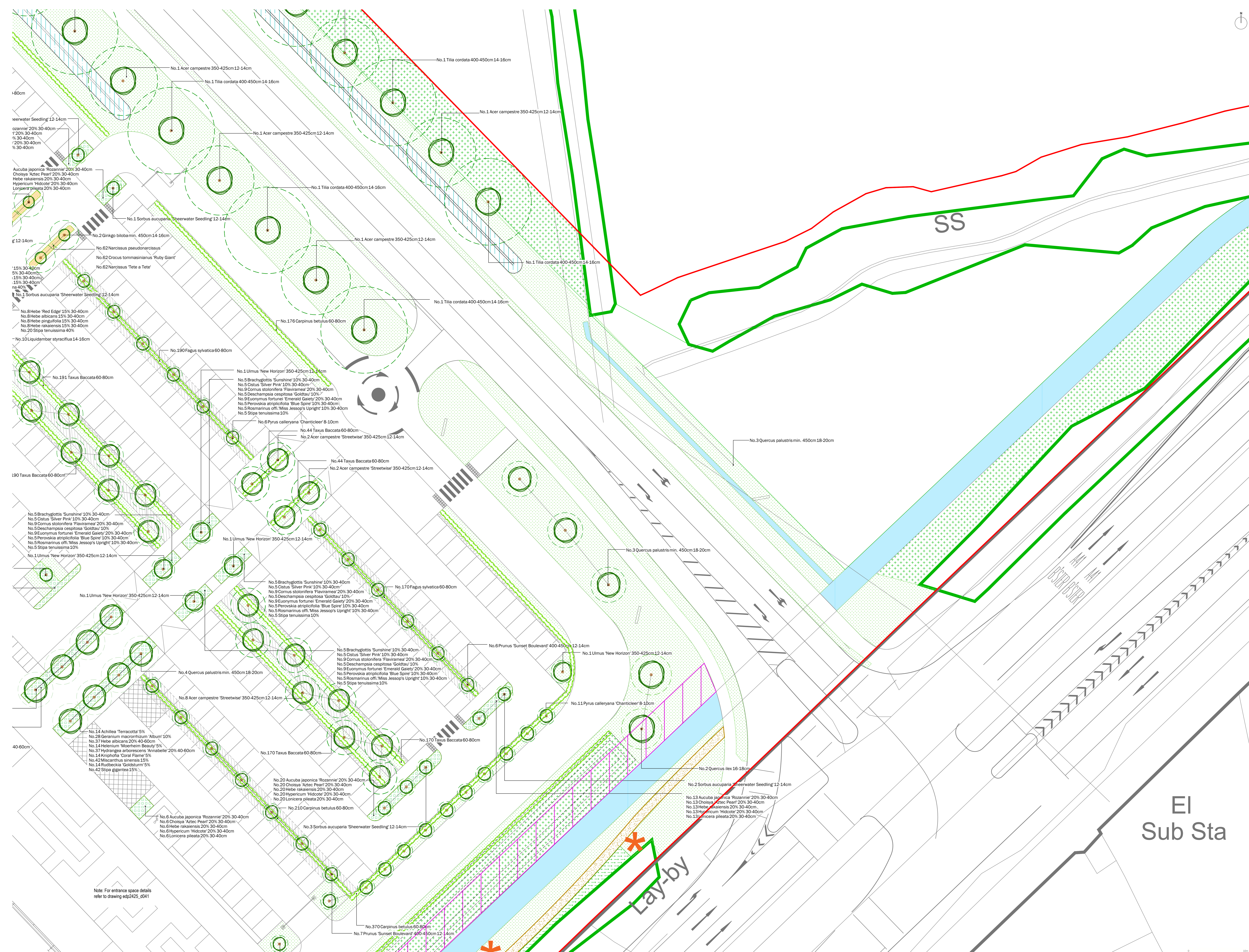
scale **1:200 @ A0** QA **RB**

Sheet 6 of 17

edp the environmental dimension partnership

Registered office: 01285 740427 www.edp-uk.co.uk info@edp-uk.co.uk





- Site boundary
- Existing Trees and Tree Groups to be Retained  
Refer to the Arboricultural Report
- Existing Hedgerows to be Retained  
Refer to the Arboricultural Report
- Proposed Tree Planting
- Proposed Hedgerow Planting
- Proposed Turf  
Product: Mediation Turf or similar  
Supplier: Robson
- Proposed Flowering Lawn Mixture  
Product: ELS Flowering Lawn Mixture  
Supplier: Emery Seeds  
Sowing rate: 4g/m<sup>2</sup>
- Proposed Species-Rich Meadow Grass  
Product: ELS Basic General Purpose Meadow Mixture  
Supplier: Emery Seeds  
Sowing rate: 4g/m<sup>2</sup>
- Proposed Tussock Grass Mixture  
Product: ELS0 Tussock Grass Mixture  
Supplier: Emery Seeds  
Sowing rate: 5g/m<sup>2</sup>
- Proposed Hedgerow Grass Mixture  
Product: ELS Hedgerow Mixture  
Supplier: Emery Seeds  
Sowing rate: 4g/m<sup>2</sup>
- Proposed Ornamental Planting
- Proposed Bulb Planting
- Proposed Native Swathe Planting
- Proposed Native Feathered Tree and Shrub Mix
- Proposed Wetland Meadow Grass to Attenuation Basin  
Product: ELS Meadow Grass Mixture for Wet Soils  
Supplier: Emery Seeds  
Sowing rate: 4g/m<sup>2</sup>
- Proposed Diverted Watercourse  
Refer to Engineers drawings for details
- Extent of Structural Soil/ Underground Crane System  
To ensure required rooting volumes for tree planting
- Proposed Footpath  
Gravel/gravel topped with timber edging, no-tie construction
- Proposed Boundary Fencing  
Refer to Architects drawings for details
- Proposed Trim Trail  
Indicate locations of trim trail/ outdoor fitness equipment along proposed trim trail route
- Proposed Earth Mounding  
Refer to ELS notes
- Proposed Root Barriers  
Product: Root Barrier (refer to be confirmed by Engineer)  
Supplier: GreenBlue Urban or similar approved
- Ecological Buffer Zone  
5m buffer from Wentley Brook

- A risk assessment has been carried out on this design. Residual risks following this process are listed below. A copy of the full Design Risk Register is also available on request from EDP.
  - 1. Soft landscaping implementation within a construction environment (across the site);
  - 2. Installing trees (across the site);
  - 3. Water bodies (attenuation ponds and swales);
  - 4. Working within close proximity of underground services;
  - 5. Planting on slopes; and
  - 6. Working within close proximity of highways.
- For further guidance, refer to HSE Construction Design and Management Regulations 2015.

**EDP** the environmental dimension partnership  
Registered office: 01285 740427 www.edp.co.uk info@edp.co.uk

**EDP** A risk assessment has been carried out on this design. Residual risks following this process are listed below. A copy of the full Design Risk Register is also available on request from EDP.

1. Soft landscaping implementation within a construction environment (across the site);  
2. Installing trees (across the site);  
3. Water bodies (attenuation ponds and swales);  
4. Working within close proximity of underground services;  
5. Planting on slopes; and  
6. Working within close proximity of highways.

For further guidance, refer to HSE Construction Design and Management Regulations 2015.

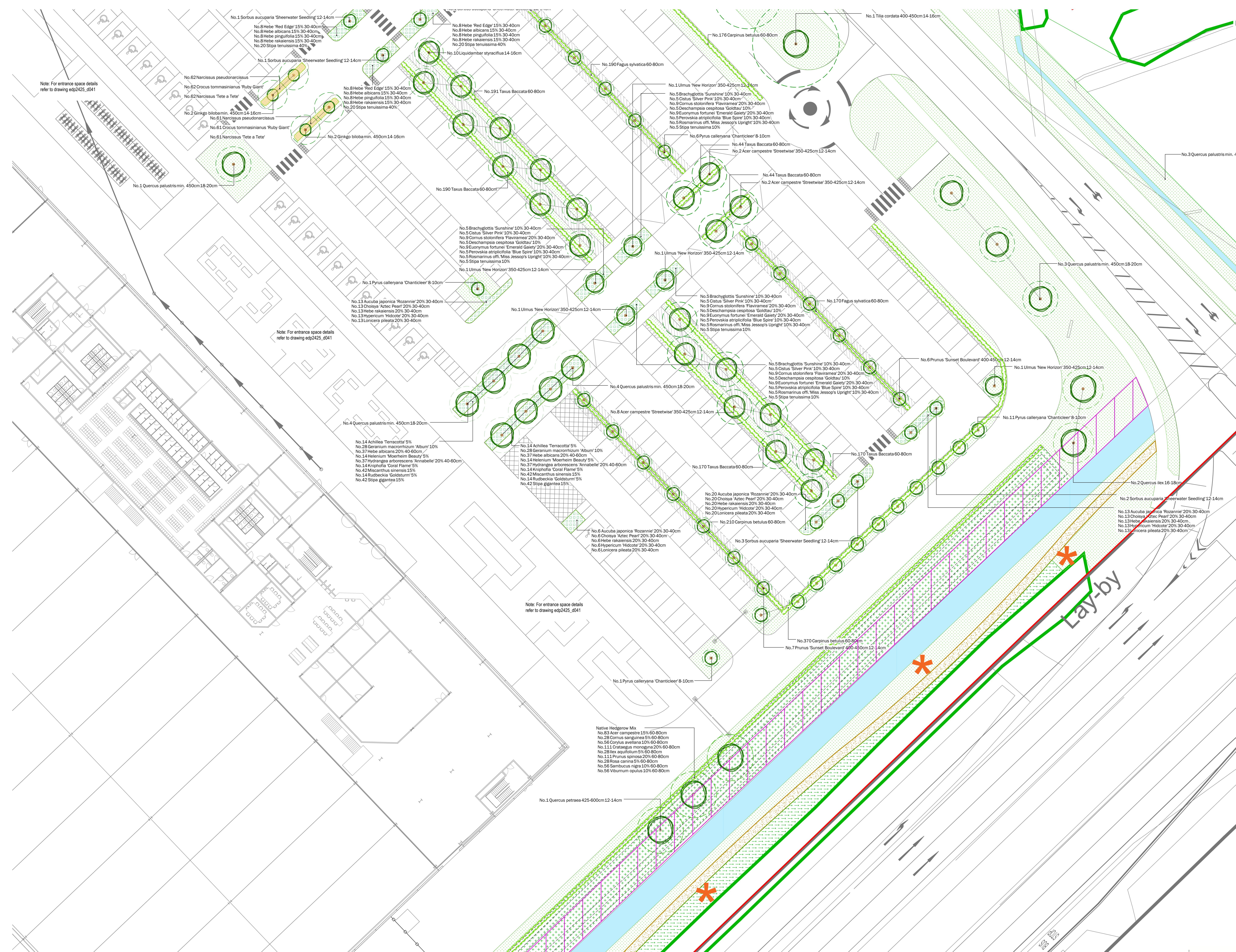
purpose of issue **PLANNING** 18-10-2022 LTI  
Approved: 06-07-2022 LCH  
date 04-07-2022 LCH  
rev description date by

client  
**Trifax Symmetry Ltd and Siemens Healthineers**  
project title  
**Symmetry Park, Oxford North**

drawing title  
**Detailed Landscape Proposals** Sheet 7 of 17  
date 18 OCTOBER 2022 drawn by LTI  
drawing number **edp2425\_00171** checked BC  
scale 1:200 @ A0 QA RB

Note: For entrance space details refer to drawing edp2425\_d041





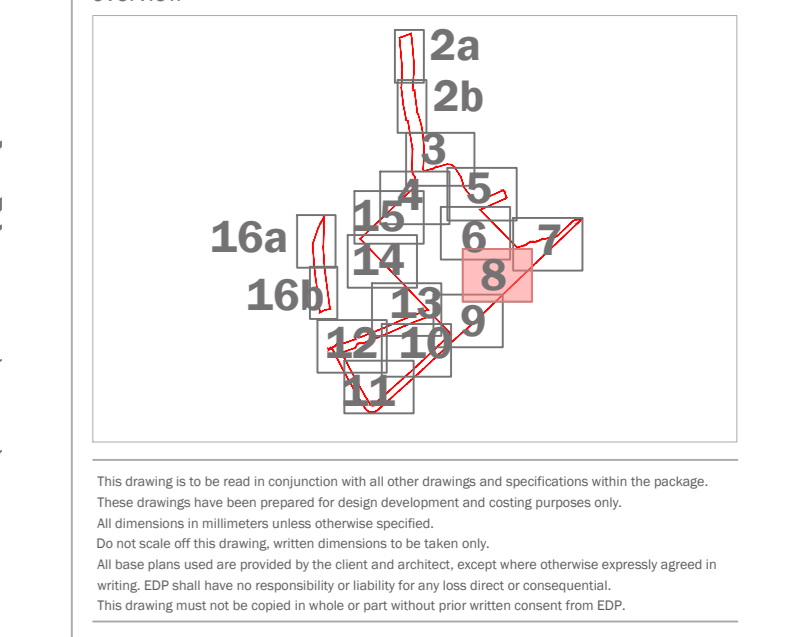
- Site boundary
- Existing Trees and Tree Groups to be Retained  
Refer to the Arboricultural Report
- Existing Hedgerows to be Retained  
Refer to the Arboricultural Report
- Proposed Tree Planting
- Proposed Hedgerow Planting
- Proposed Turf  
Product: Meadow Turf or similar  
Supplier: Rabibam
- Proposed Flowering Lawn Mixture  
Product: E11 Flowering Lawn Mixture  
Supplier: Emerald Seeds  
Sowing rate: 4g/m<sup>2</sup>
- Proposed Species-Rich Meadow Grass  
Product: E13 Basic General Purpose Meadow Mixture  
Supplier: Emerald Seeds  
Sowing rate: 4g/m<sup>2</sup>
- Proposed Tussock Grass Mixture  
Product: E10 Tussock Grass Mixture  
Supplier: Emerald Seeds  
Sowing rate: 4g/m<sup>2</sup>
- Proposed Hedgerow Grass Mixture  
Product: E12 Hedgerow Mixture  
Supplier: Emerald Seeds  
Sowing rate: 4g/m<sup>2</sup>
- Proposed Ornamental Planting
- Proposed Bulb Planting
- Proposed Native Swathe Planting
- Proposed Native Feathered Tree and Shrub Mix
- Proposed Wetland Meadow Grass to Attenuation Basin  
Product: E16 Meadow Grass Mixture for Wet Soils  
Supplier: Emerald Seeds  
Sowing rate: 4g/m<sup>2</sup>
- Proposed Diverted Watercourse  
Refer to Engineers drawings for details
- Extent of Structural Soil/ Underground Crate System  
to ensure required rooting volumes for tree planting
- Proposed Gravel for Maintenance Access
- Proposed Footpath  
Gravel/grass footpath with timber edging. No-rig construction
- \* Proposed Boundary Fencing  
Refer to Architects drawings for details
- \* Proposed Trim Trail  
Indicative locations of trim trail/ outdoor fitness equipment along proposed trim trail route
- Proposed Earth Mounding  
with max 2.1 slope ratio
- Proposed Root Barriers  
Product: Root Barrier (to be confirmed by Engineer)  
Supplier: GreenBlue Urban or similar approved
- Ecological Buffer Zone  
5m buffer from Wentlebury Brook

**A** A risk assessment has been carried out on this design. Residual risks following this process are listed below. A copy of the full Design Risk Register is also available on request from EDP.

**CDM**

1. Soft landscaping implementation within a construction environment (across the site);
2. Installing trees (across the site);
3. Water bodies (attenuation ponds and swales);
4. Working within close proximity of underground services;
5. Planting on slopes; and
6. Working within close proximity of highways.

For further guidance, refer to HSE Construction Design and Management Regulations 2015.



purpose of issue **PLANNING**

| rev | description                          | date       | by  |
|-----|--------------------------------------|------------|-----|
| 1   | Ecological Buffer Advice, Trim Trail | 18-10-2022 | LH  |
| 2   | Amended                              | 06-07-2022 | LCH |
| 3   |                                      | 01-07-2022 | LCH |

client  
**Trifax Symmetry Ltd and Siemens Healthineers**

project title  
**Symmetry Park, Oxford North**

drawing title  
**Detailed Landscape Proposals**

Sheet 8 of 17

date 18 OCTOBER 2022 drawn by LTH  
drawing number edp2425\_60171 checked BC  
scale 1:200 @ A0 QA RB

edp the environmental dimension partnership  
Registered office: 01285 740427 www.edp-uk.co.uk info@edp-uk.co.uk

Note: For entrance space details refer to drawing edp2425\_041

Note: For entrance space details refer to drawing edp2425\_041

Note: For entrance space details refer to drawing edp2425\_041

Native Hedgerow Mix  
No. 83 Acer campestre 15% 60-80cm  
No. 28 Cornus sanguinea 5% 60-80cm  
No. 50 Corylus avellana 10% 60-80cm  
No. 111 Crataegus monogyna 20% 60-80cm  
No. 28 Ilex aquifolium 5% 60-80cm  
No. 111 Prunus spinosa 20% 60-80cm  
No. 28 Rosa canina 5% 60-80cm  
No. 56 Sambucus nigra 10% 60-80cm  
No. 56 Viburnum opulus 10% 60-80cm