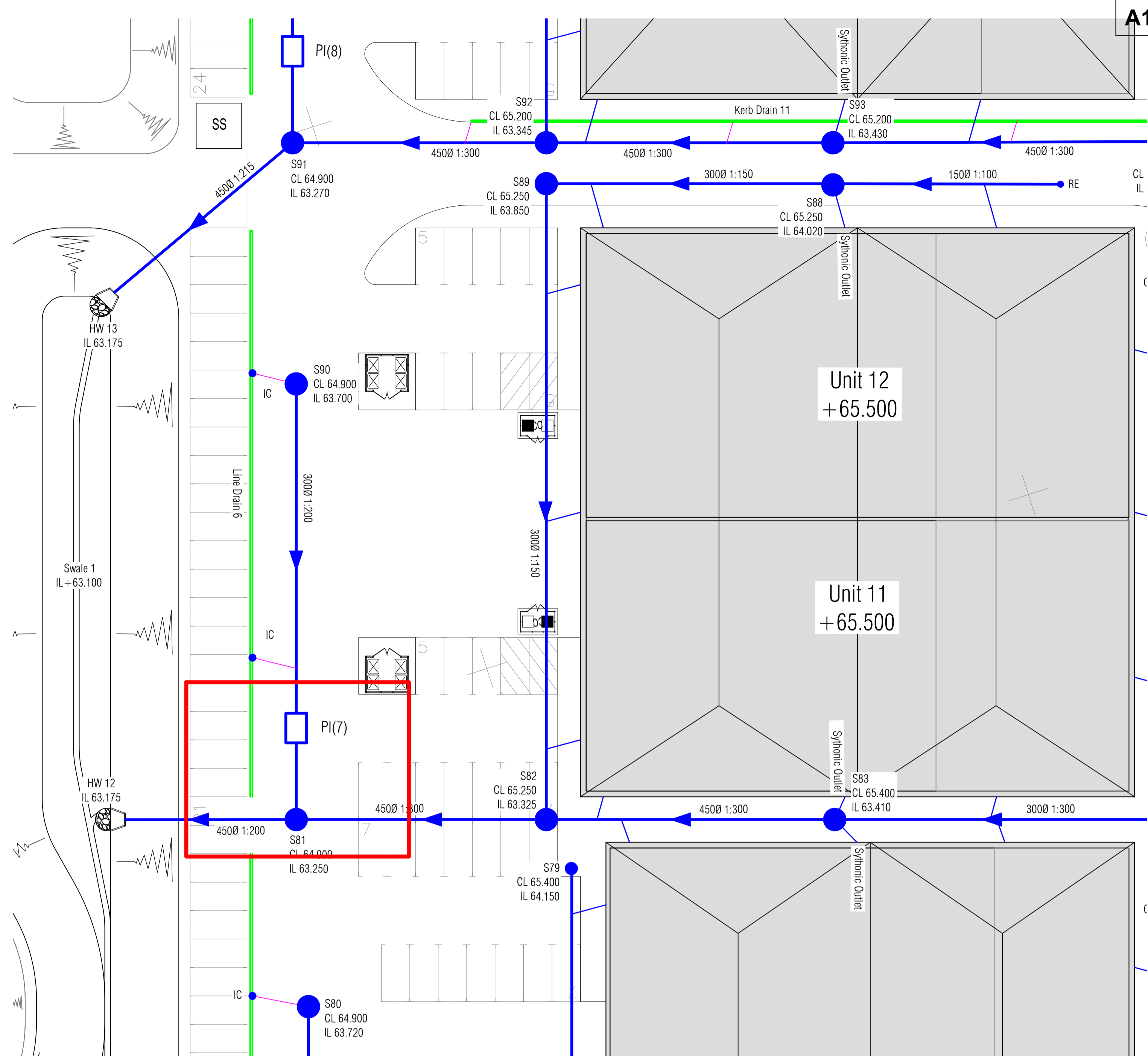
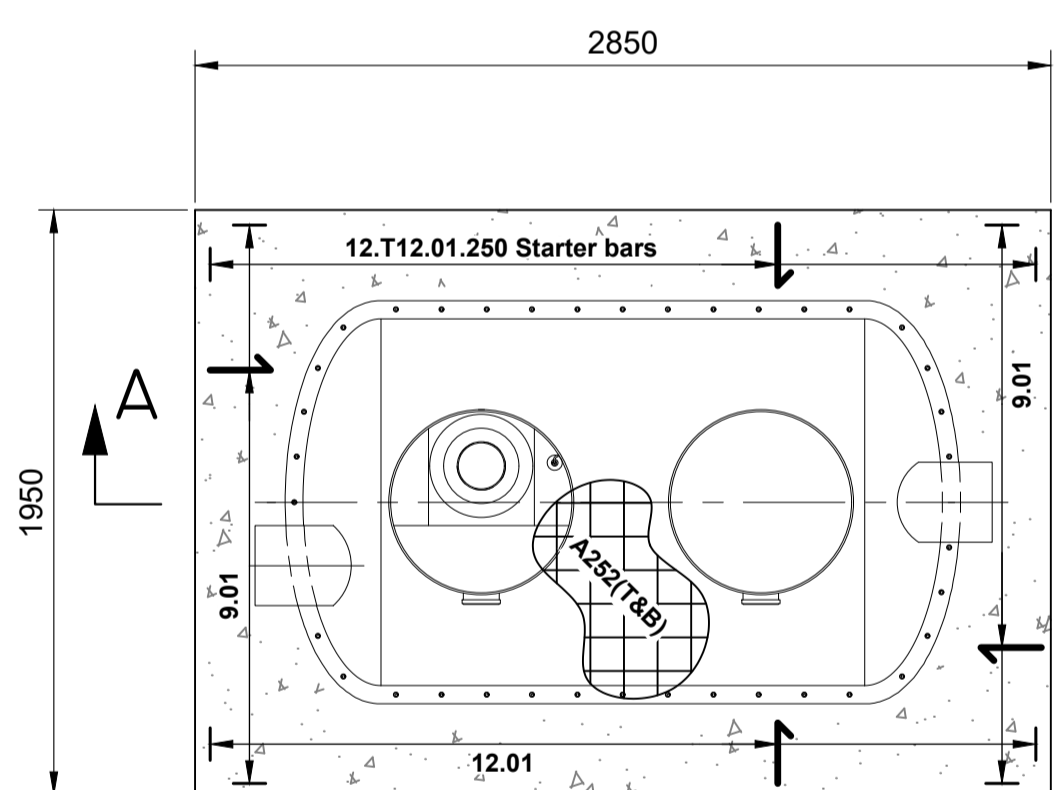


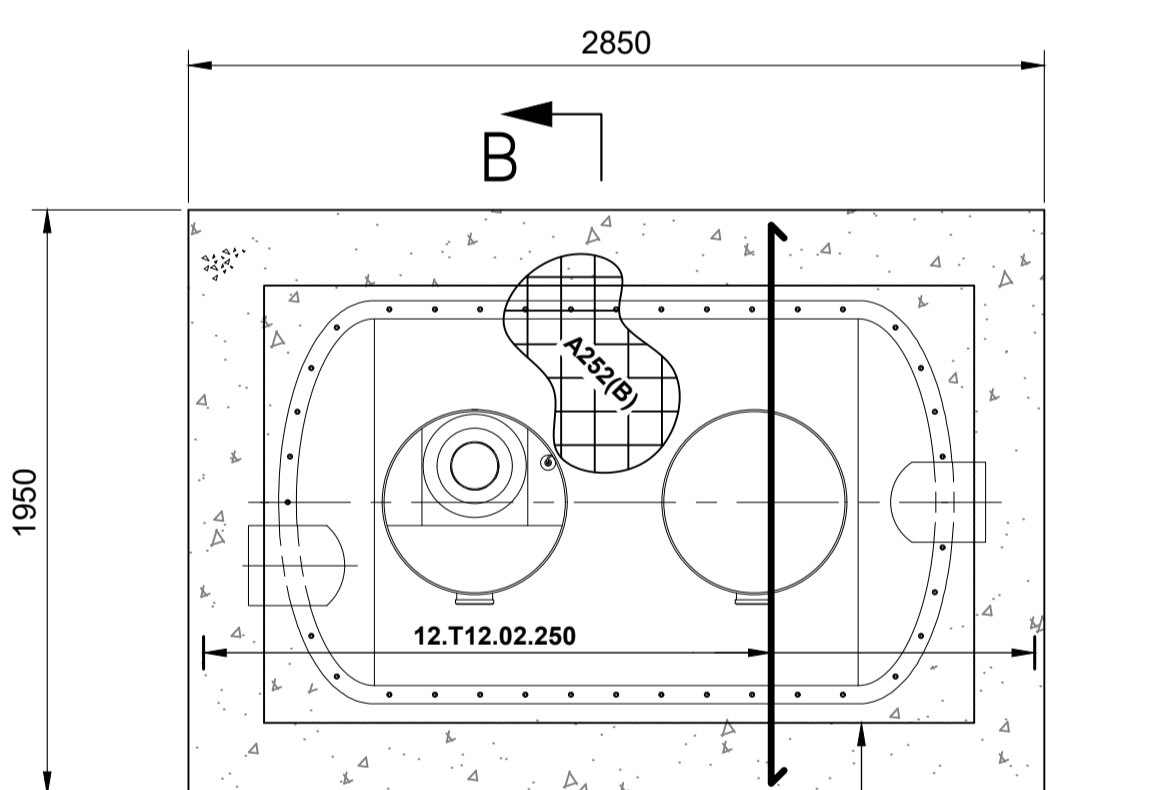
Interceptor 7 Location 1:50



Unit 11 + 12 Drainage Key Plan 1:250

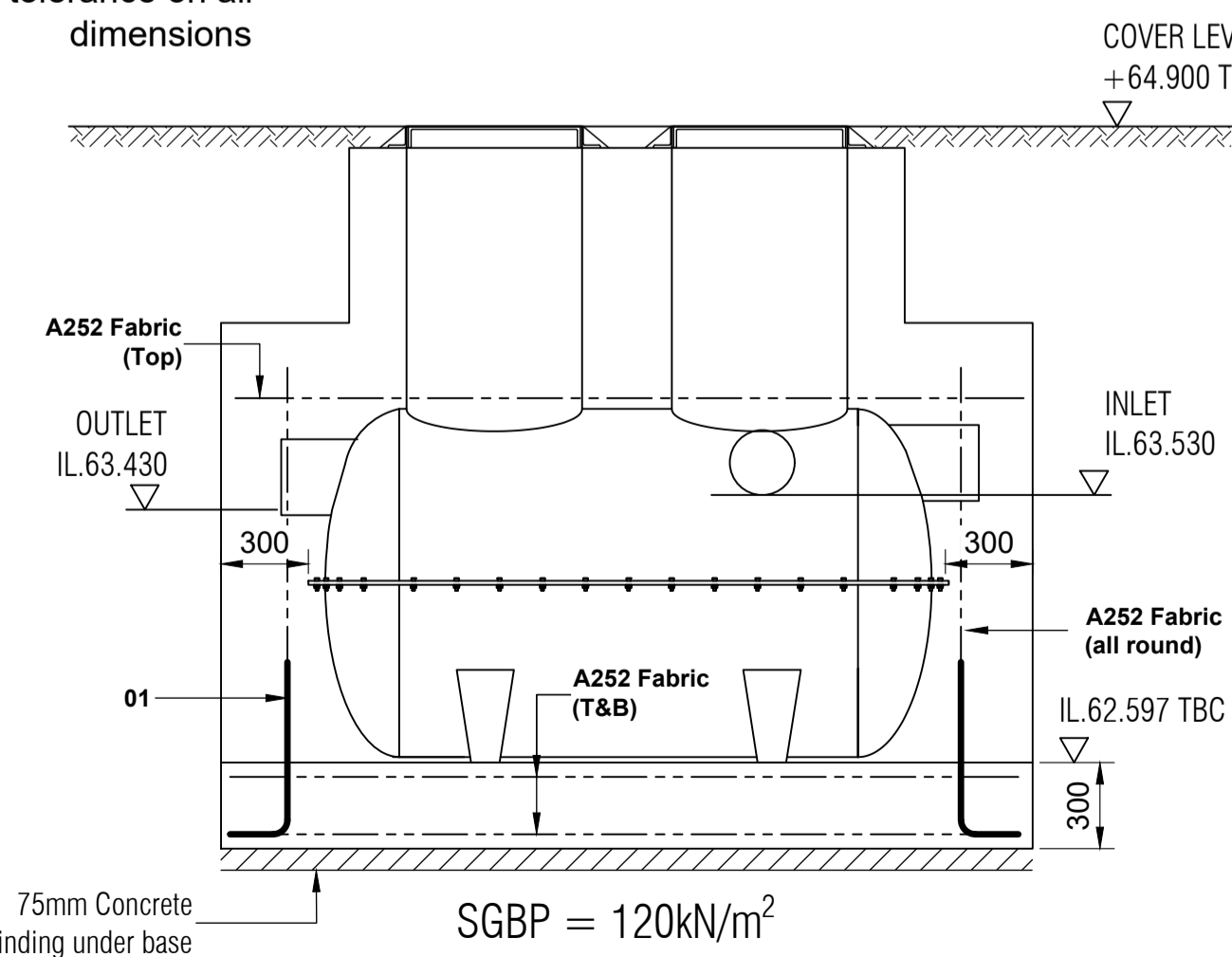


BASE PLAN 1:25

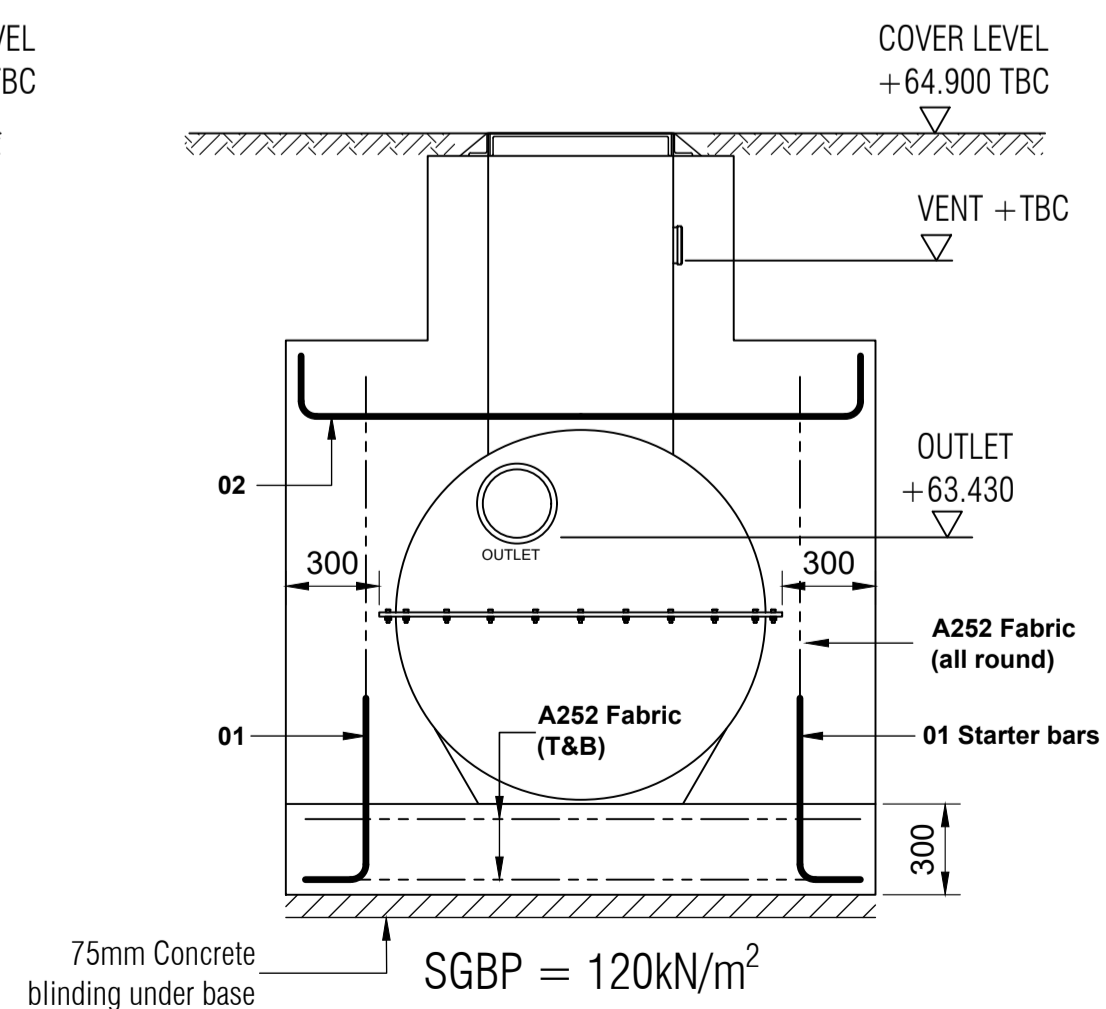


TOP PLAN 1:25

NOTE:
All tanks subject to
2.5% tolerance on all
dimensions



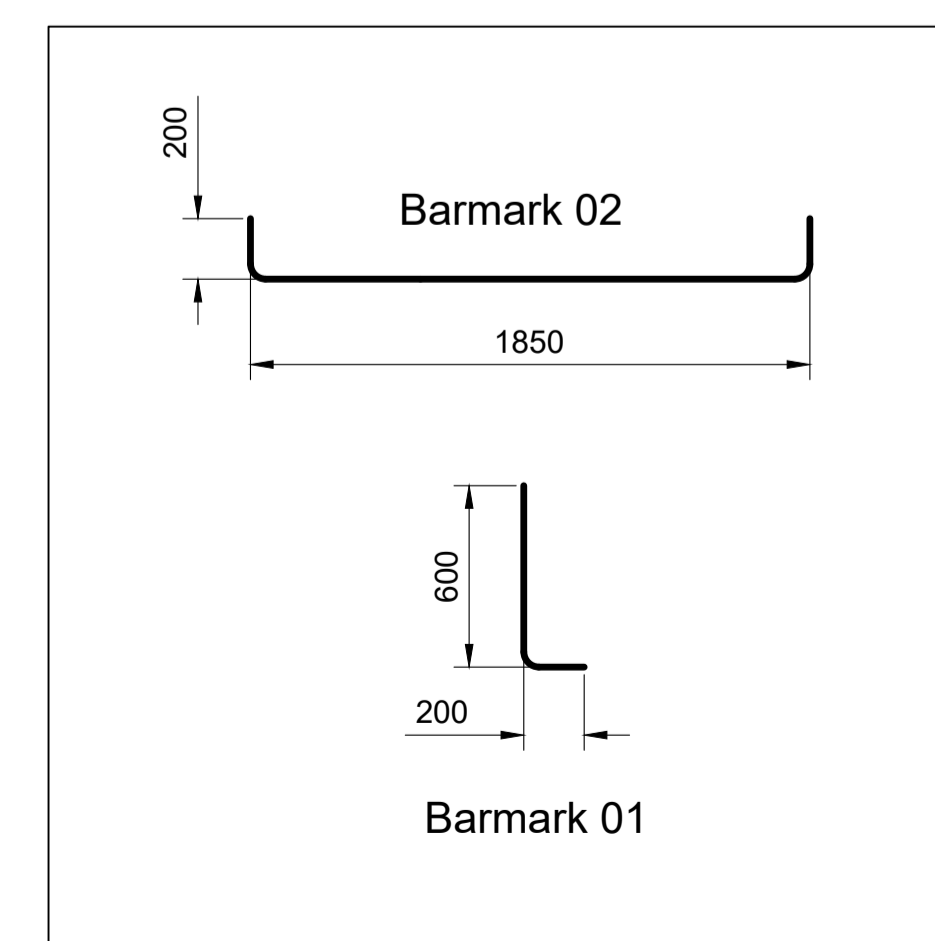
SECTION A-A 1:25



SECTION B-B 1:25

Petrol Interceptor (7)
Ref: NSBP 6 or similar
approved
Cover Level = 64.900
Invert Level = 62.597
+300mm (min) RC
encasement all round

MARSH NSBP 6 (CLASS 1)
BY-PASS SEPARATOR
Ø 1.35m x 2.25m LONG TANK
300 TWINWALL INLET / OUTLET
(STANDARD DUTY SHELL)



TOWN PLANNING

Rev	Date	Revision Description
Revision Schedule		
Project Title Catalyst Bicester Wendlebury Road, Bicester		
Client ALBION LAND		
Drawing Title PHASE 3 Unit 11 + 12 Interceptor (7) Details		
Consulting Engineers BAILEY JOHNSON HAYES Consulting Engineers		
ST. ALBANS: Suite 4, Phoenix House, 63 Campfield Rd, ST. ALBANS, Herts AL1 5FL MANCHESTER: Grange House, John Dalton Street, MANCHESTER, M2 6FW		
Scale 1:50, 25 @A1	Drawing Number S1358-PH3-15	
Date 30.01.23	Drawn DC	