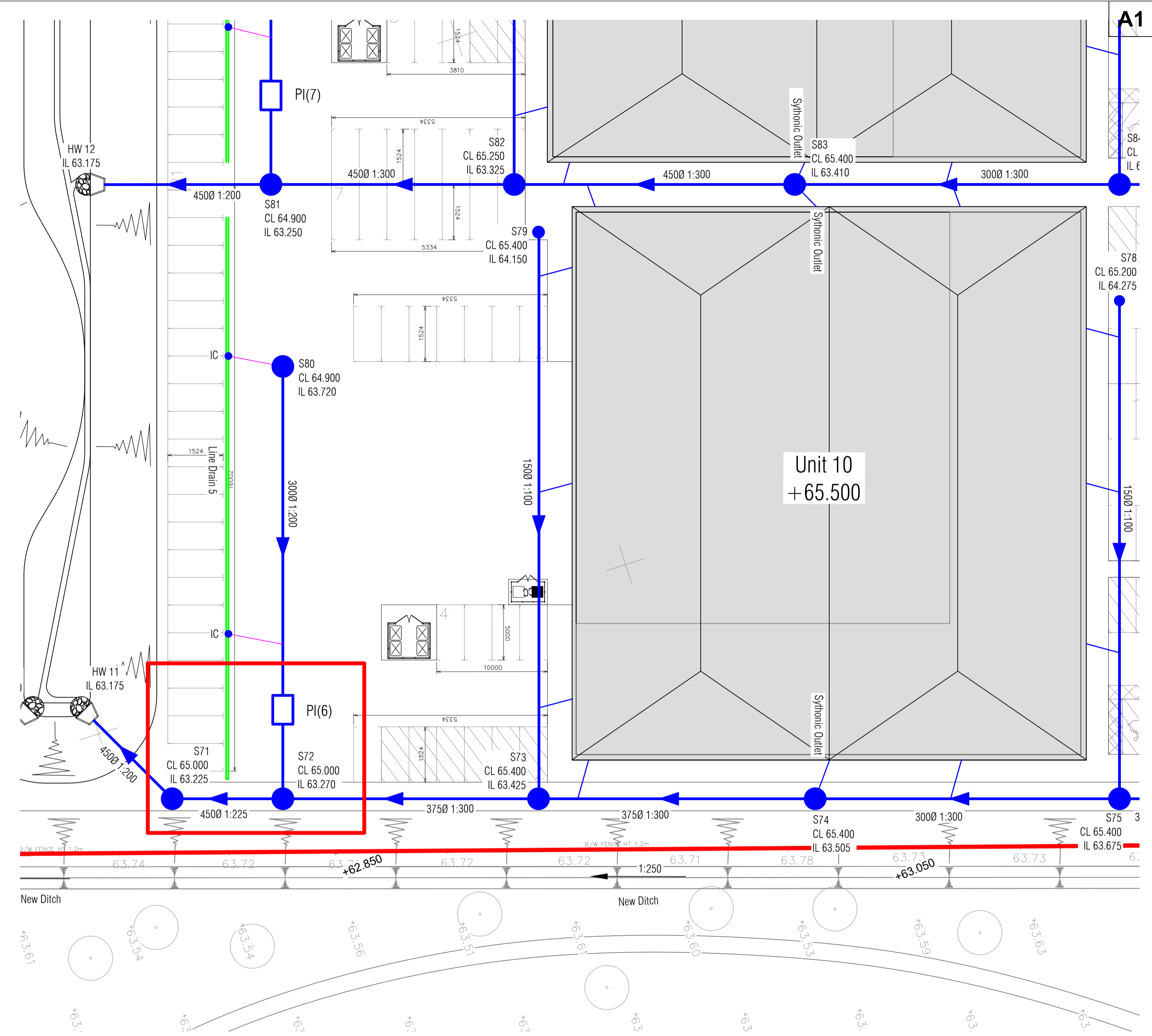
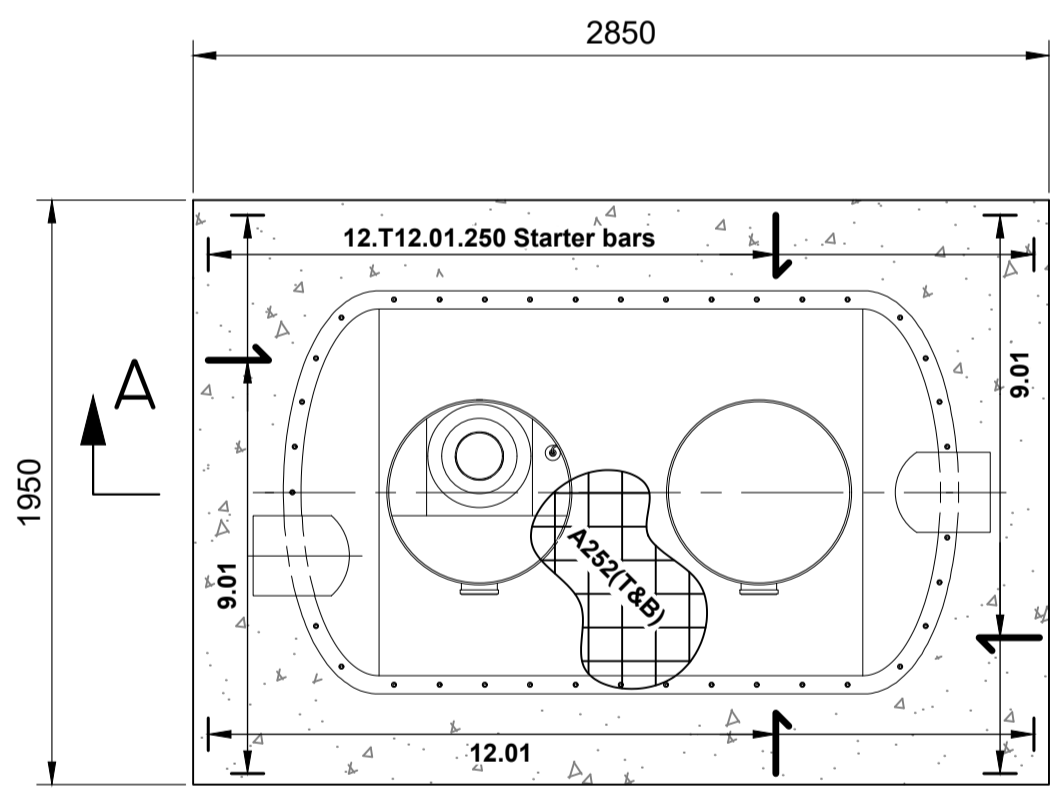


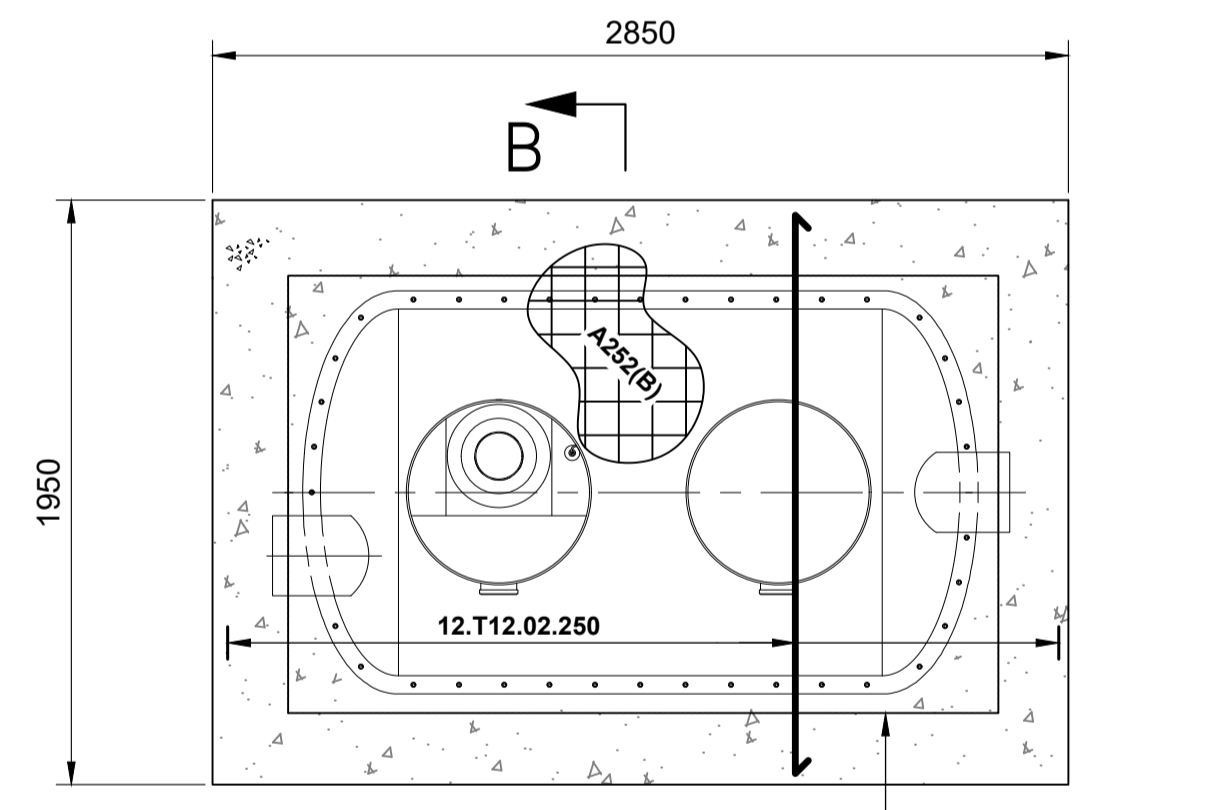
Interceptor 6 Location 1:50



Unit 10 Drainage Key Plan 1:250

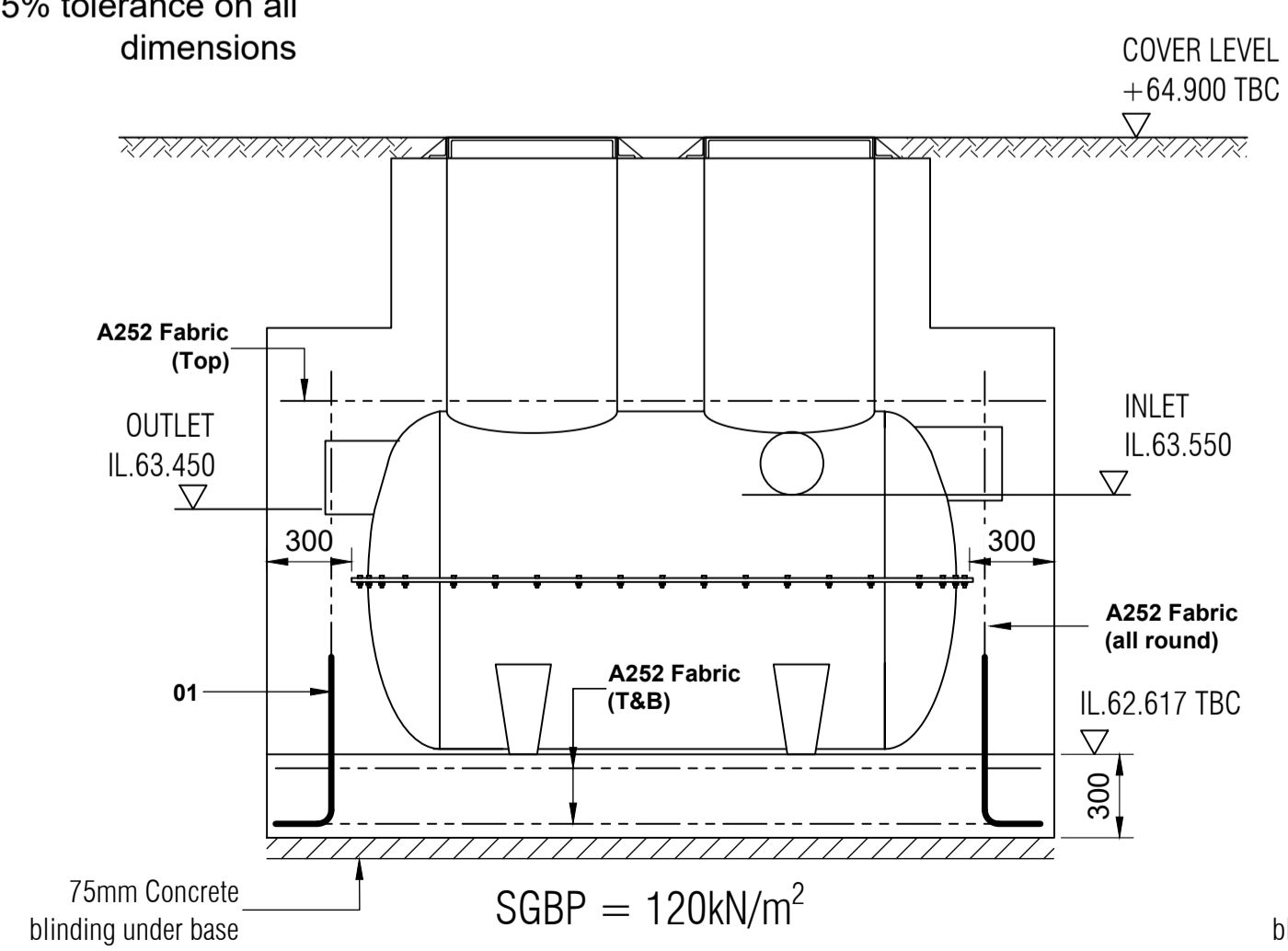


BASE PLAN 1:25

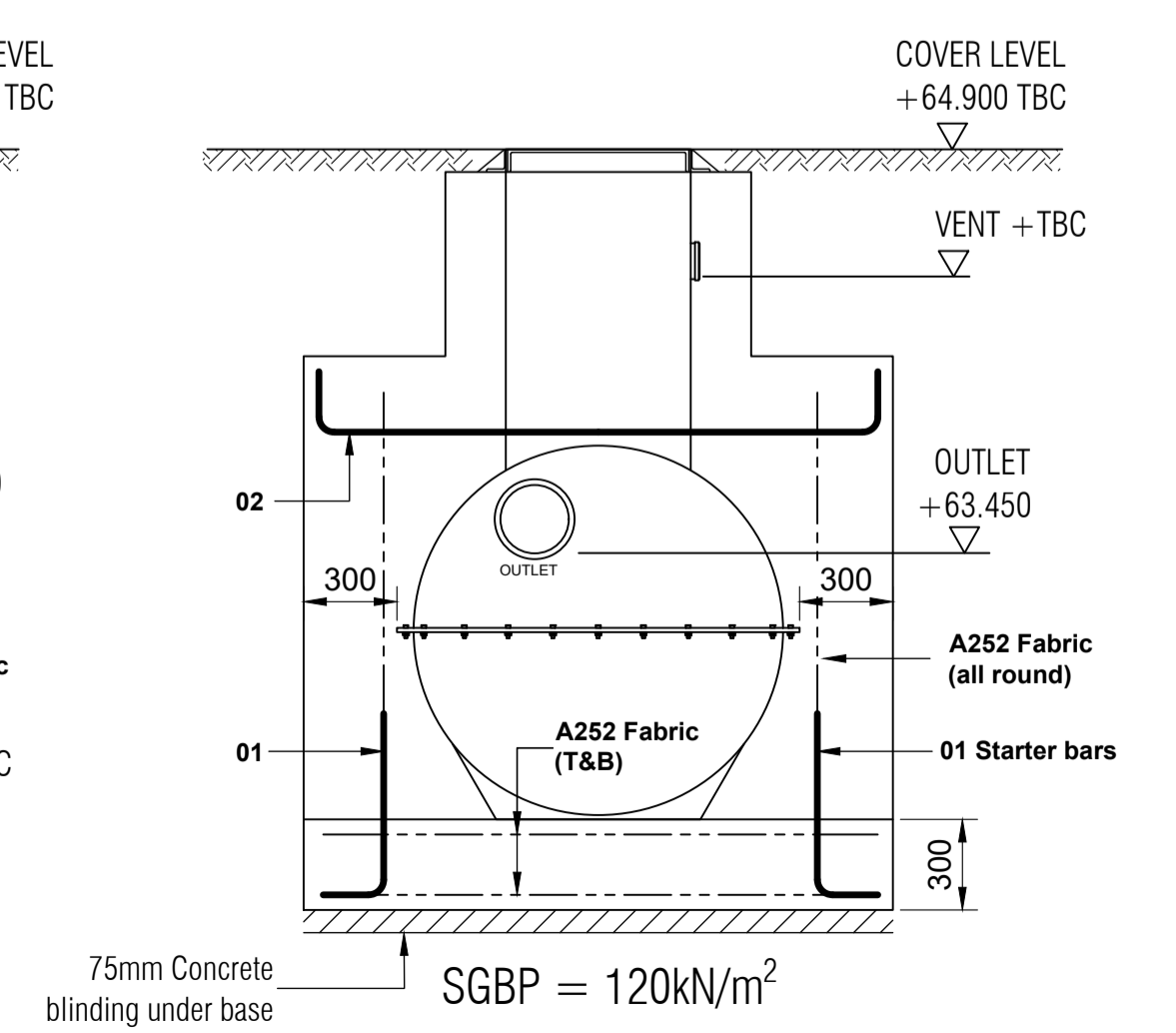


TOP PLAN 1:25

NOTE:  
All tanks subject to  
2.5% tolerance on all  
dimensions



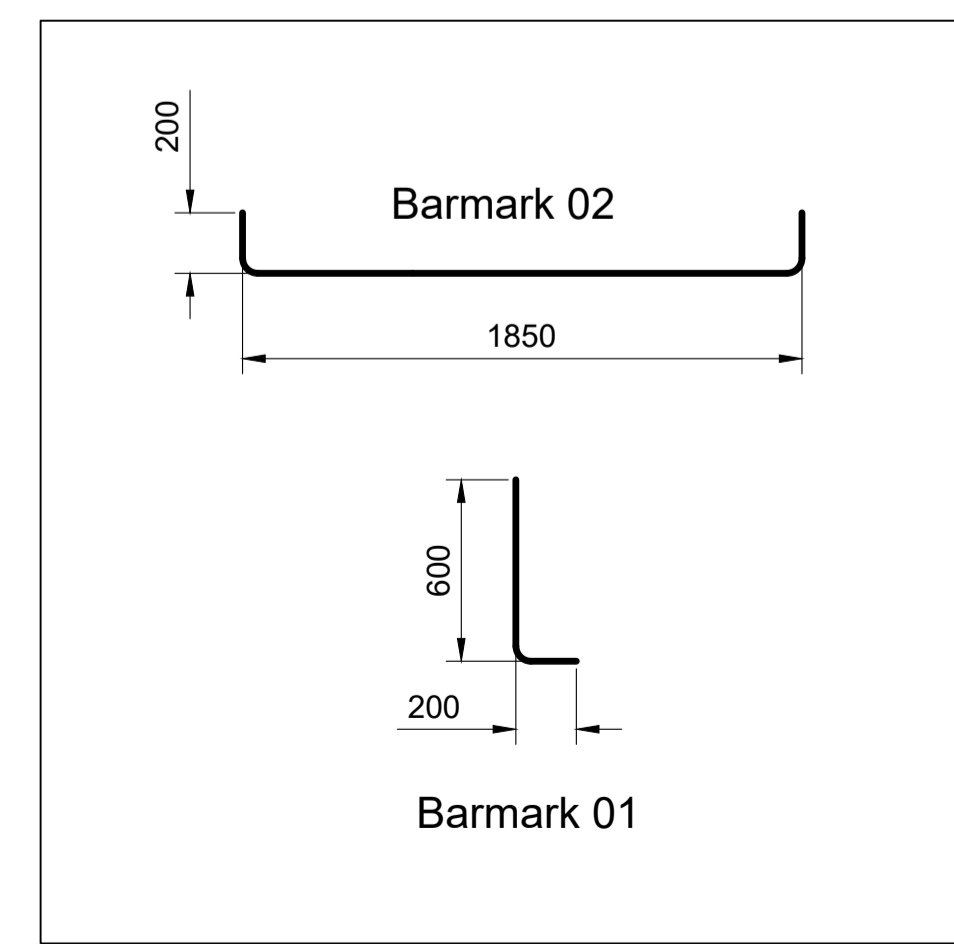
SECTION A-A 1:25



SECTION B-B 1:25

*Petrol Interceptor (6)*  
Ref: NSBP 6 or similar  
approved  
Cover Level = 64.900  
Invert Level = 62.617  
+300mm (min) RC  
encasement all round

**MARSH NSBP 6 (CLASS 1)**  
**BY-PASS SEPARATOR**  
Ø 1.35m x 2.25m LONG TANK  
300 TWINWALL INLET / OUTLET  
(STANDARD DUTY SHELL)



**TOWN PLANNING**

Rev	Date	Revision Description
Revision Schedule		
Project Title <b>Catalyst Bicester</b> Wendlebury Road, Bicester		
Client <b>ALBION LAND</b>		
Drawing Title <b>PHASE 3</b> Unit 10 Interceptor (6) Details		
Consulting Engineers <b>BAILEY JOHNSON HAYES</b> Consulting Engineers		
ST. ALBANS: Suite 4, Phoenix House, 63 Campfield Rd, ST. ALBANS, Herts AL1 5FL MANCHESTER: Grange House, John Dalton Street, MANCHESTER, M2 6FW		
Scale 1:50, 25 @A1	Drawing Number <b>S1358-PH3-14</b>	
Date 30.01.23	Drawn DC	