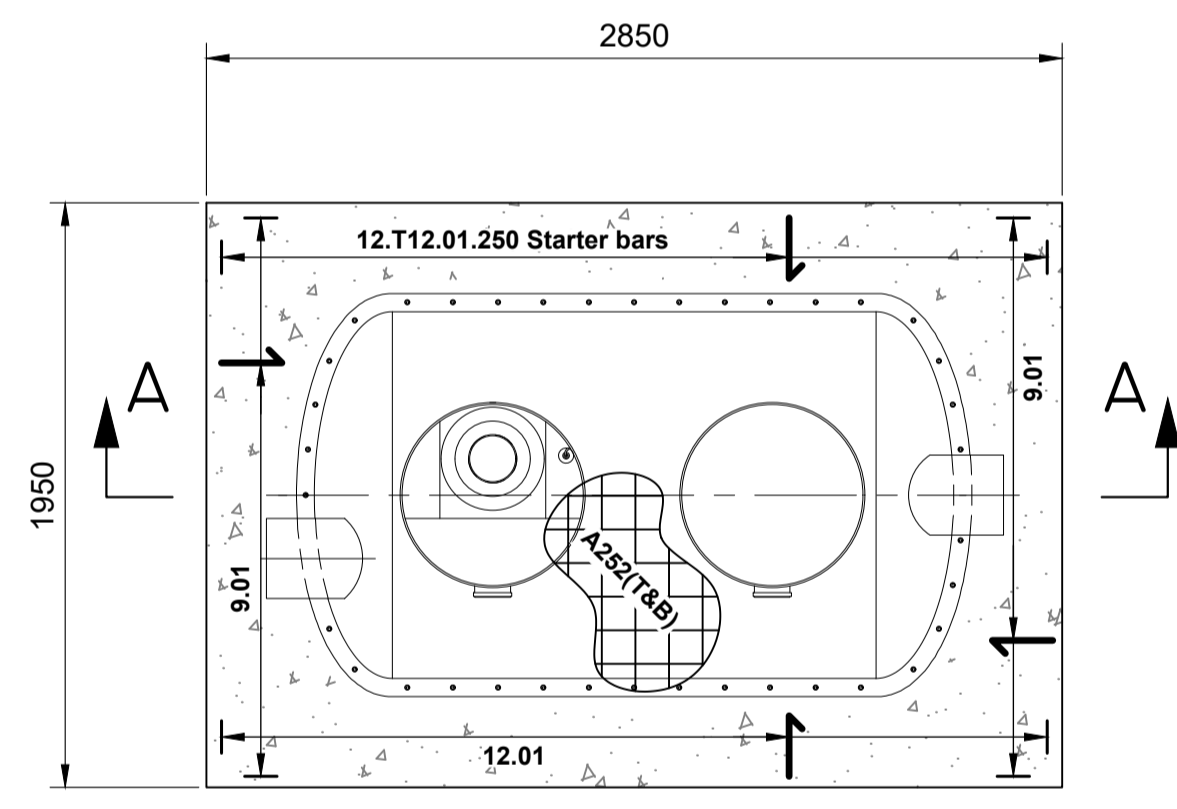
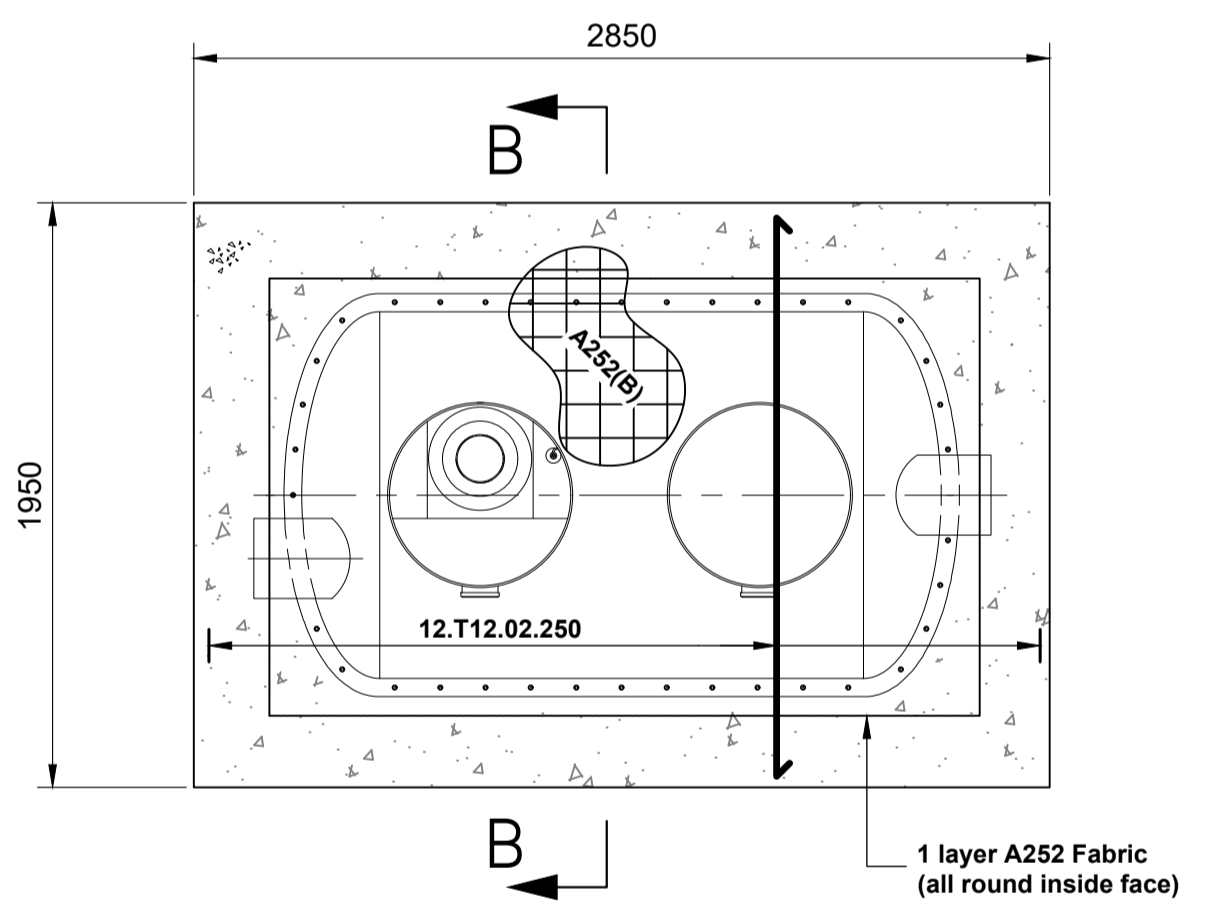


Interceptor Location 1:50



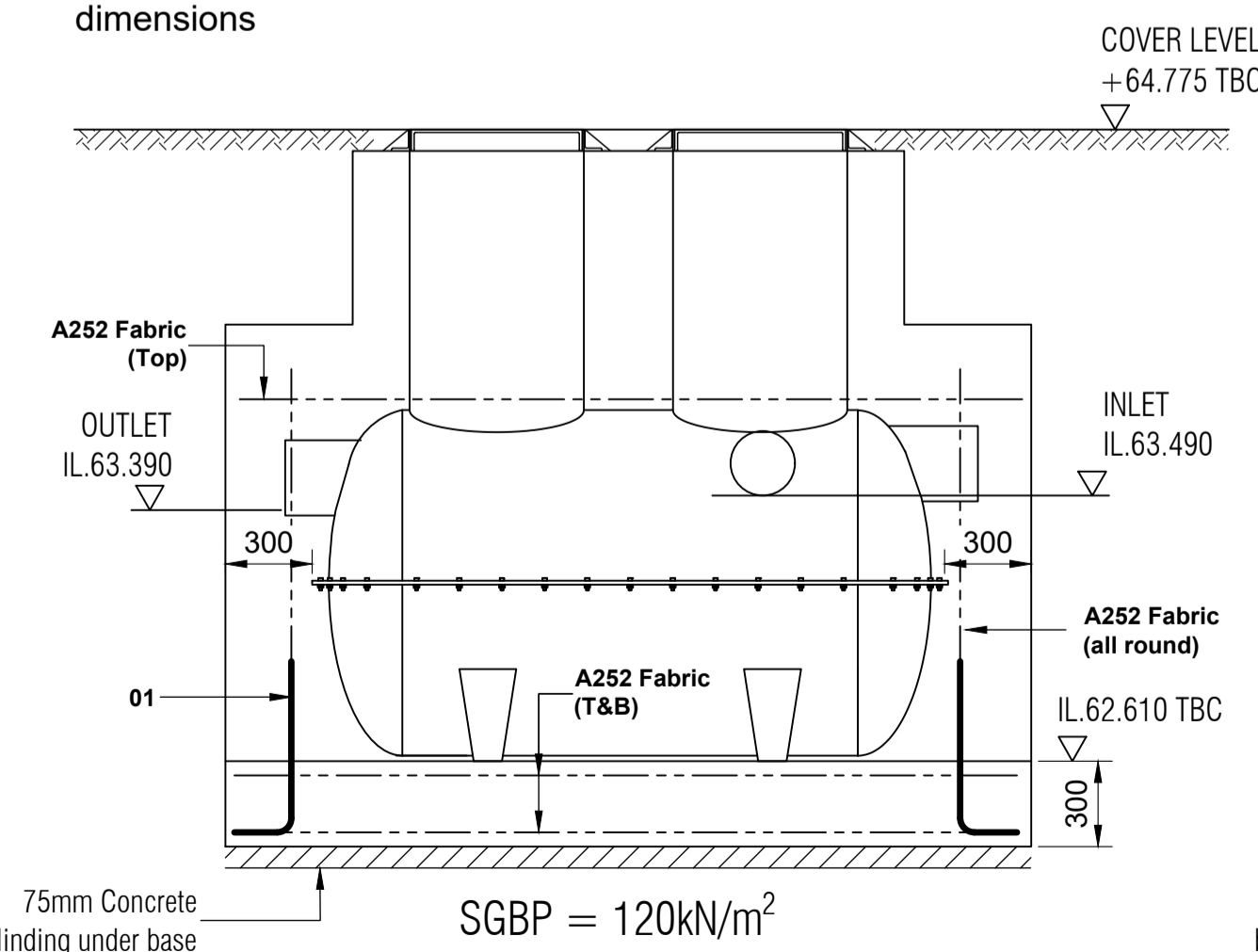
BASE PLAN 1:25



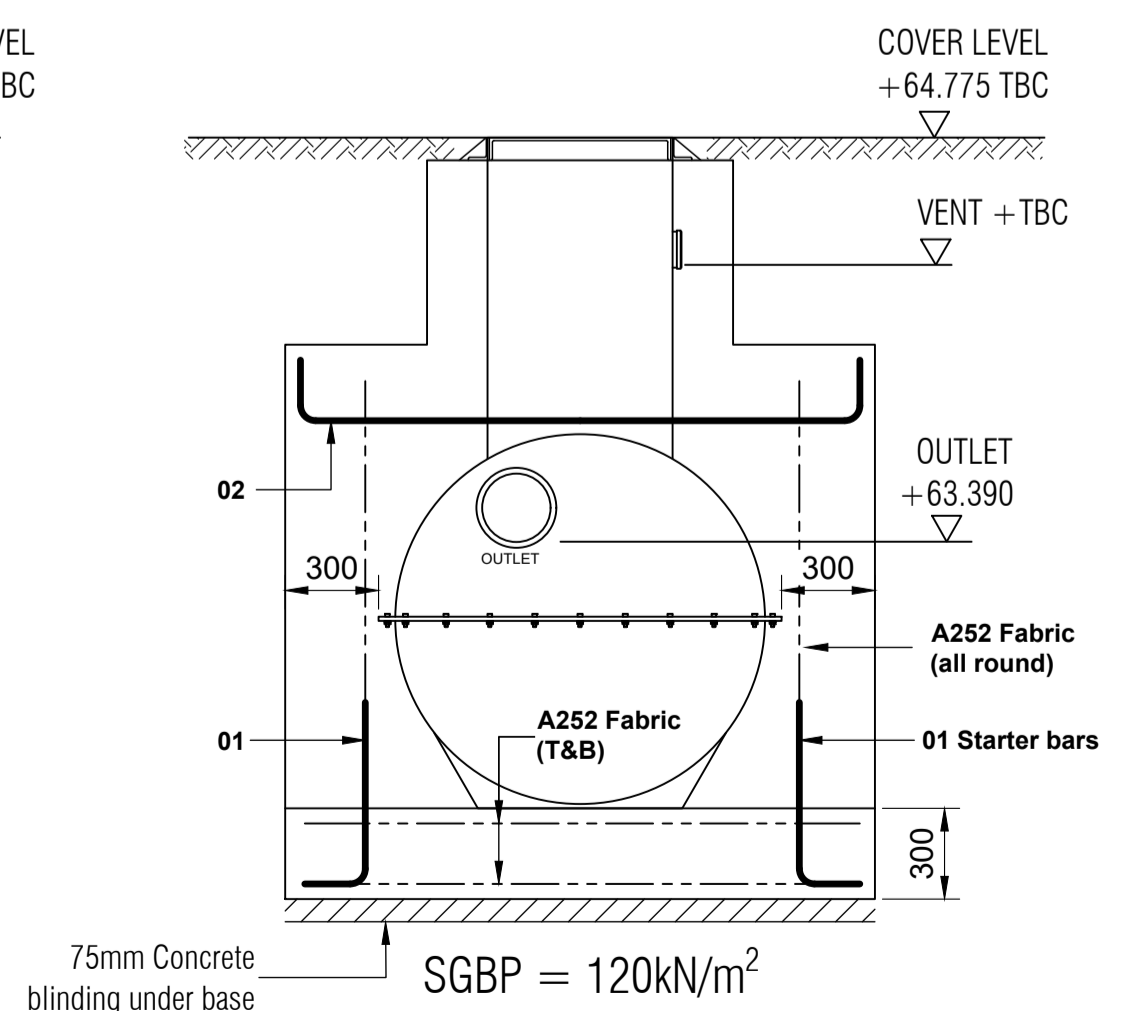
TOP PLAN 1:25

*Petrol Interceptor (5)  
Ref: NSBP 8 or similar  
approved  
Cover Level = 64.775  
Invert Level = 62.610  
+300mm (min) RC  
encasement all round*

NOTE:  
All tanks subject to  
2.5% tolerance on all  
dimensions

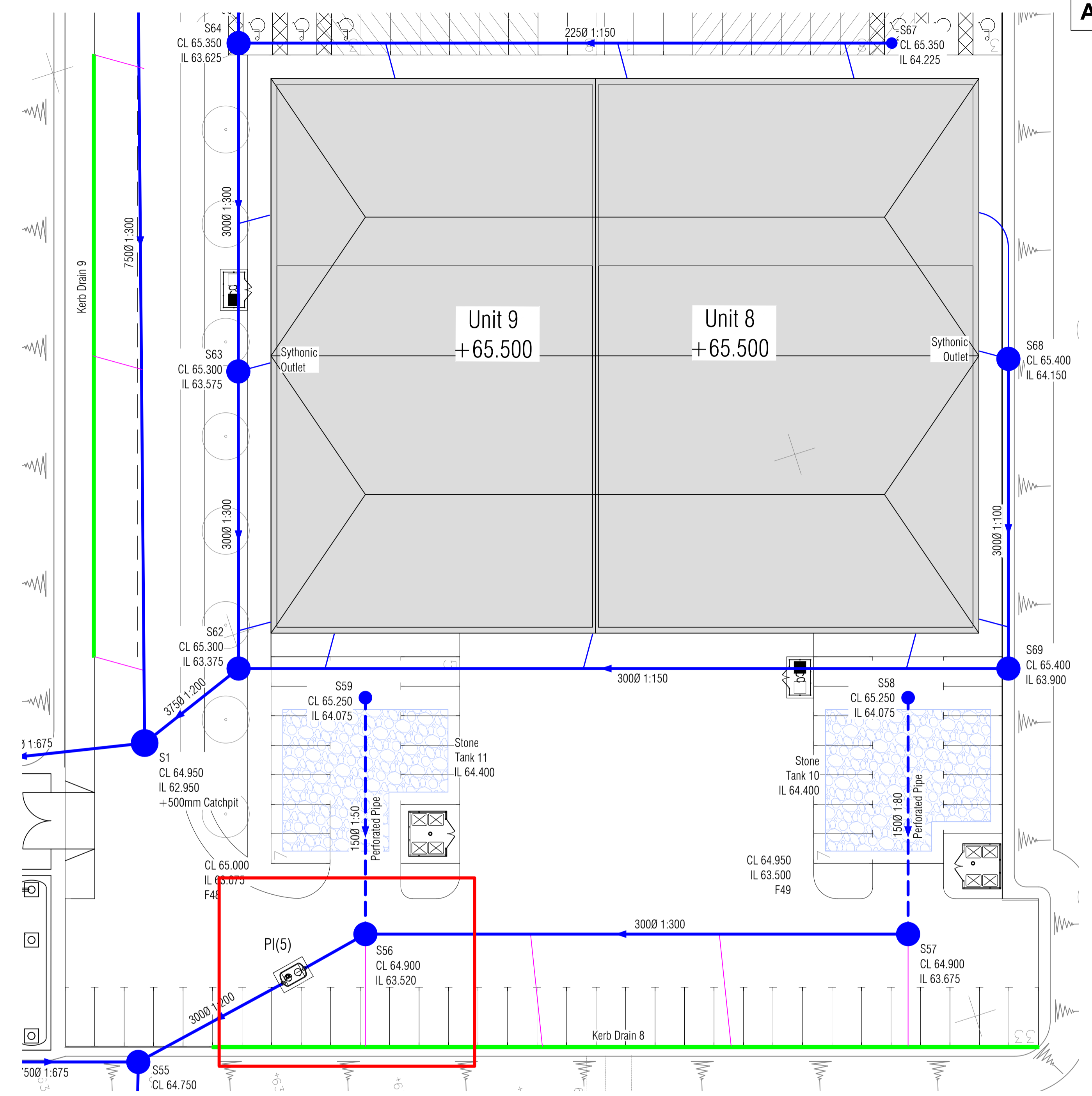
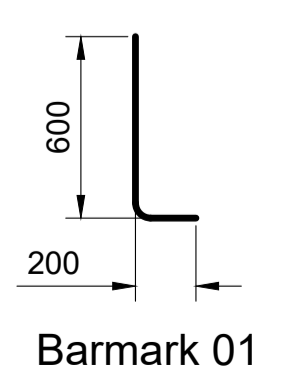
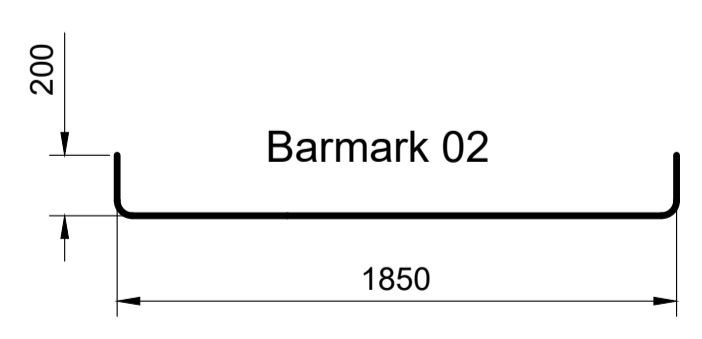


SECTION A-A 1:25



SECTION B-B 1:25

MARSH NSBP 6 (CLASS 1)  
BY-PASS SEPARATOR  
Ø 1.35m x 2.25m LONG TANK)  
300 TWINWALL INLET / OUTLET  
(STANDARD DUTY SHELL)



Unit 8 + 9 Drainage Key Plan  
1:250

TOWN PLANNING

Rev	Date	Revision Description
Revision Schedule		
Project Title <b>Catalyst Bicester</b> Wendlebury Road, Bicester		
Client <b>ALBION LAND</b>		
Drawing Title <b>PHASE 2</b> Unit 8 + 9 Interceptor (5) Details		
<b>BAILEY JOHNSON HAYES</b> Consulting Engineers <small>ST ALBANS: Suite 4, Phoenix House, 63 Campfield Rd, ST ALBANS, Herts AL1 5FL MANCHESTER: Grange House, John Dalton Street, MANCHESTER, M2 6FW</small>		
Scale	1:50,25 @A1	Drawing Number
Date	17.01.23	S1358-PH2-20
Drawn	DC	