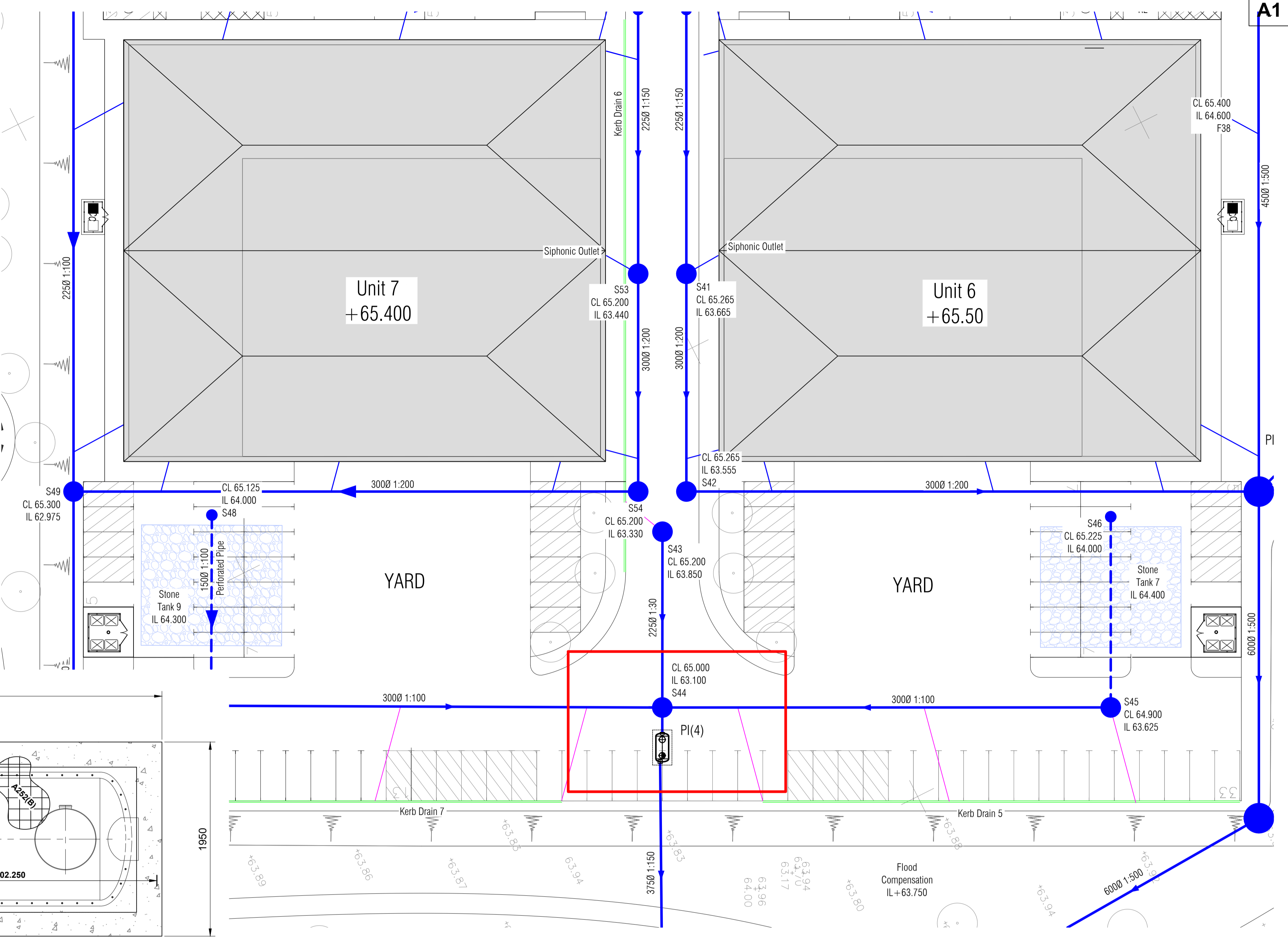
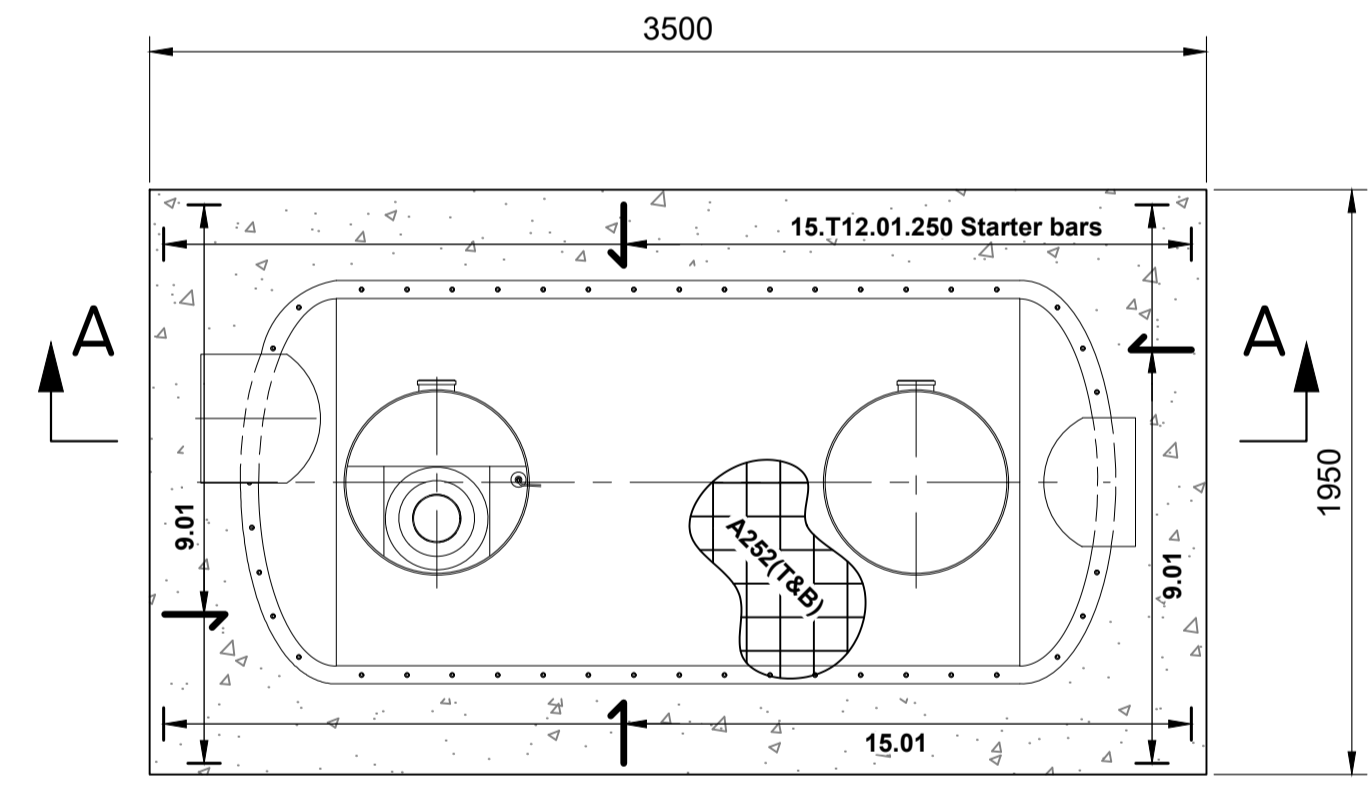


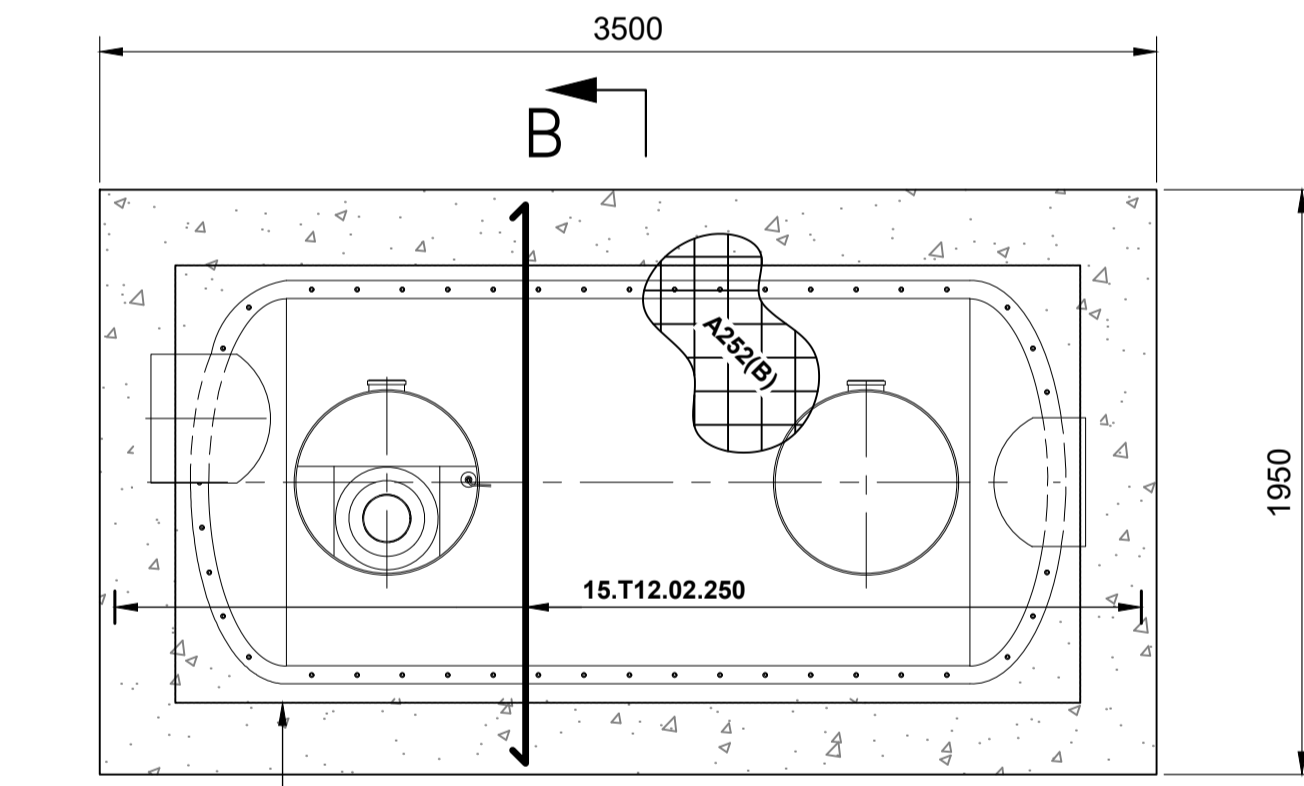
Unit 6+7 Interceptor Location 1:50



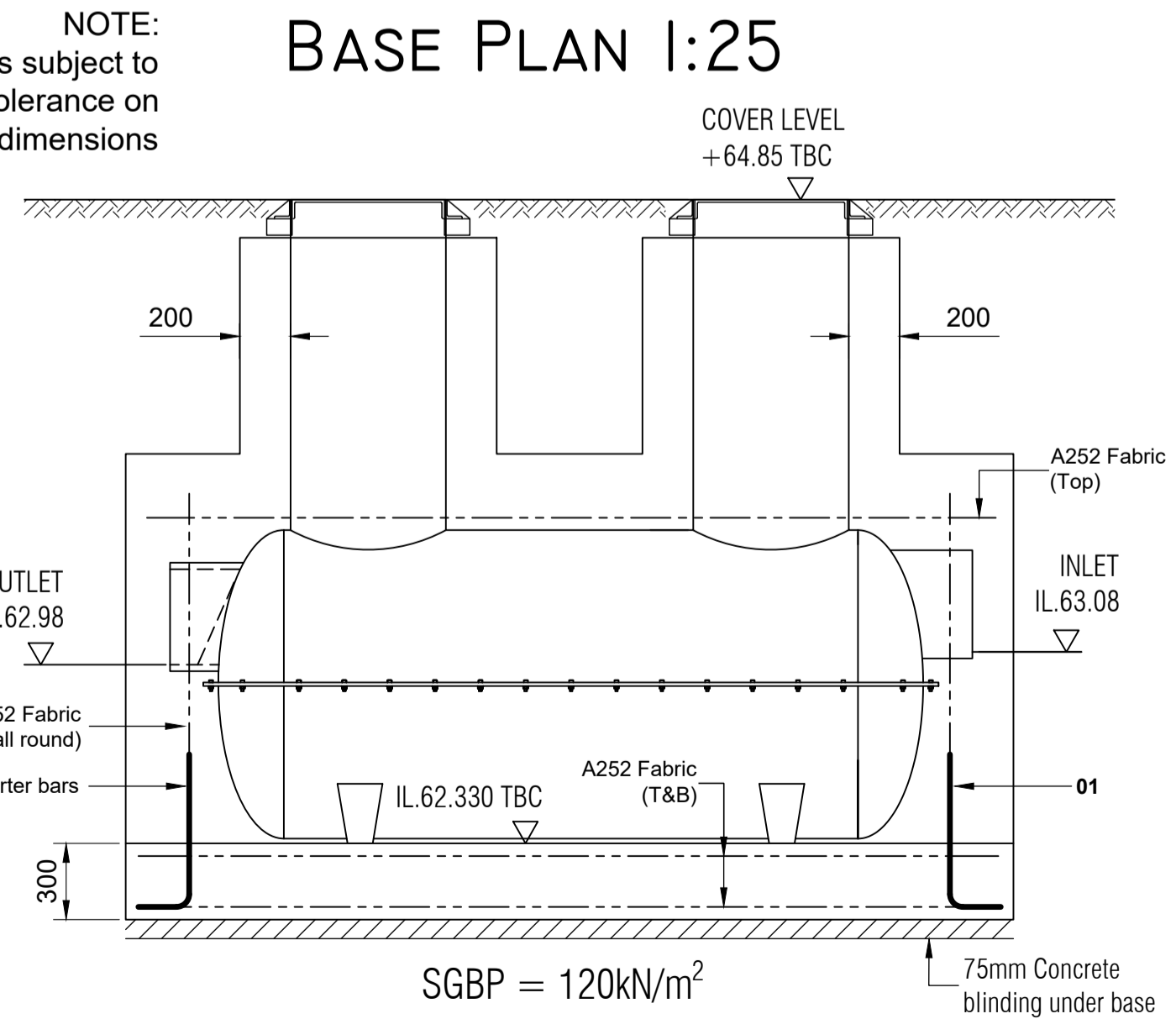
Unit 6+7 Drainage Key Plan 1:250



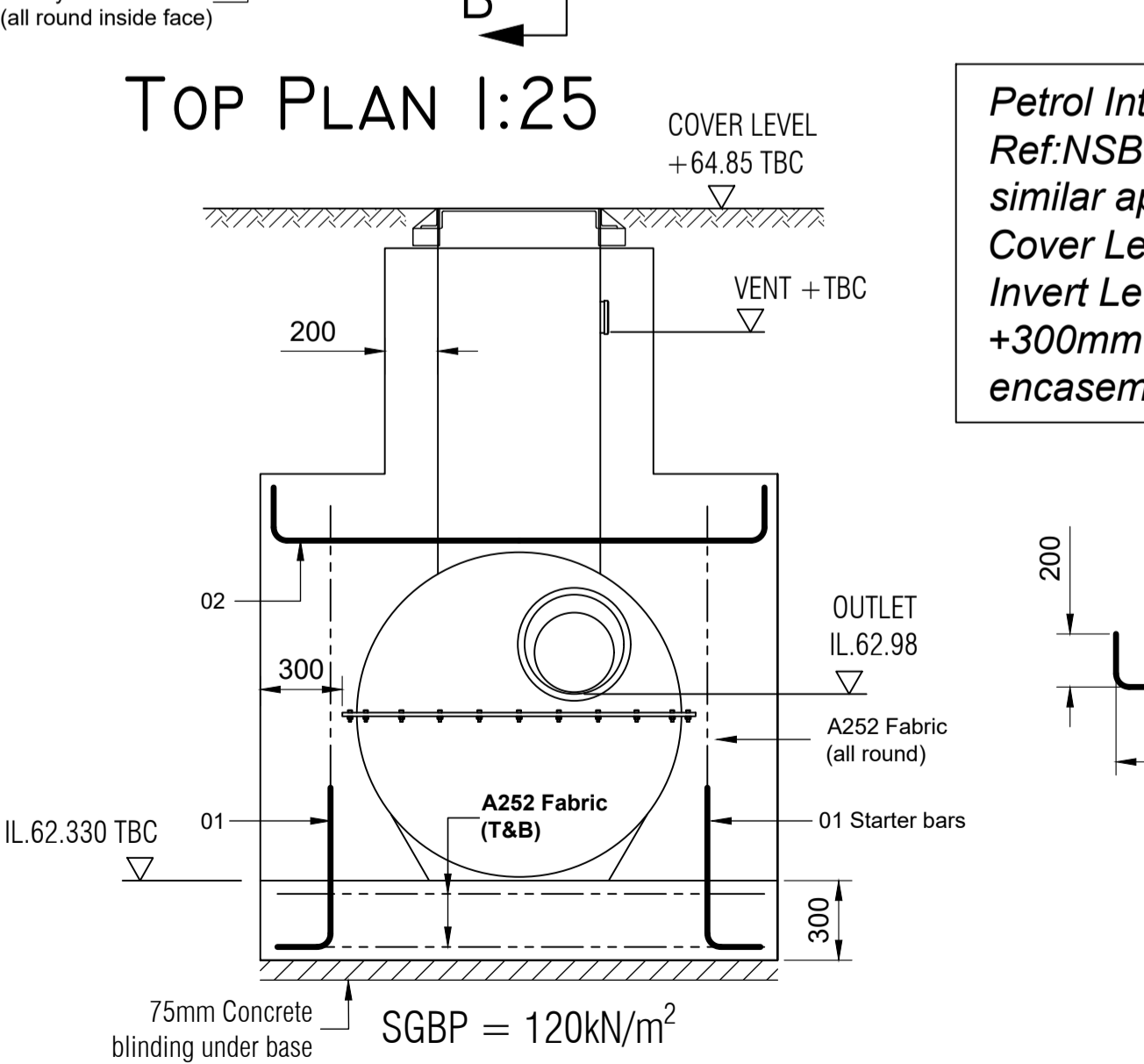
BASE PLAN 1:25



TOP PLAN 1:25

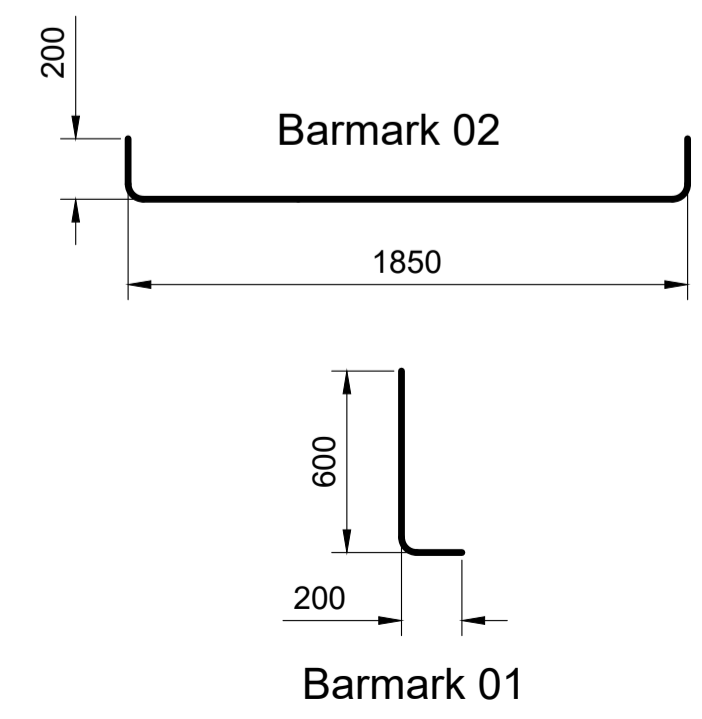


SECTION A-A 1:25



SECTION B-B 1:25

Petrol Interceptor (4)
Ref: NSBP0010 or similar approved
Cover Level = 64.85
Invert Level = 62.320
+300mm (min) RC encasement all round



MARSH NSBP 10 (CLASS 1)
BY-PASS SEPARATOR
Ø 1.35m x 2.91m LONG TANK)
375 TWINWALL INLET / OUTLET
(STANDARD DUTY SHELL)

TOWN PLANNING

Rev	Date	Revision Description
Revision Schedule		
Project Title Catalyst Bicester Wendlebury Road, Bicester		
Client ALBION LAND		
Drawing Title PHASE 2 Units 6+7 Interceptor (4) Details		
BAILEY JOHNSON HAYES Consulting Engineers		
ST. ALBANS: Suite 4, Phoenix House, 63 Campfield Rd, ST. ALBANS, Herts AL1 5FL MANCHESTER: Grange House, John Dalton Street, MANCHESTER, M2 6FW		
Scale	1:50,25 @A1	Drawing Number
Date	17.01.23	S1358-PH2-19
Drawn	DC	