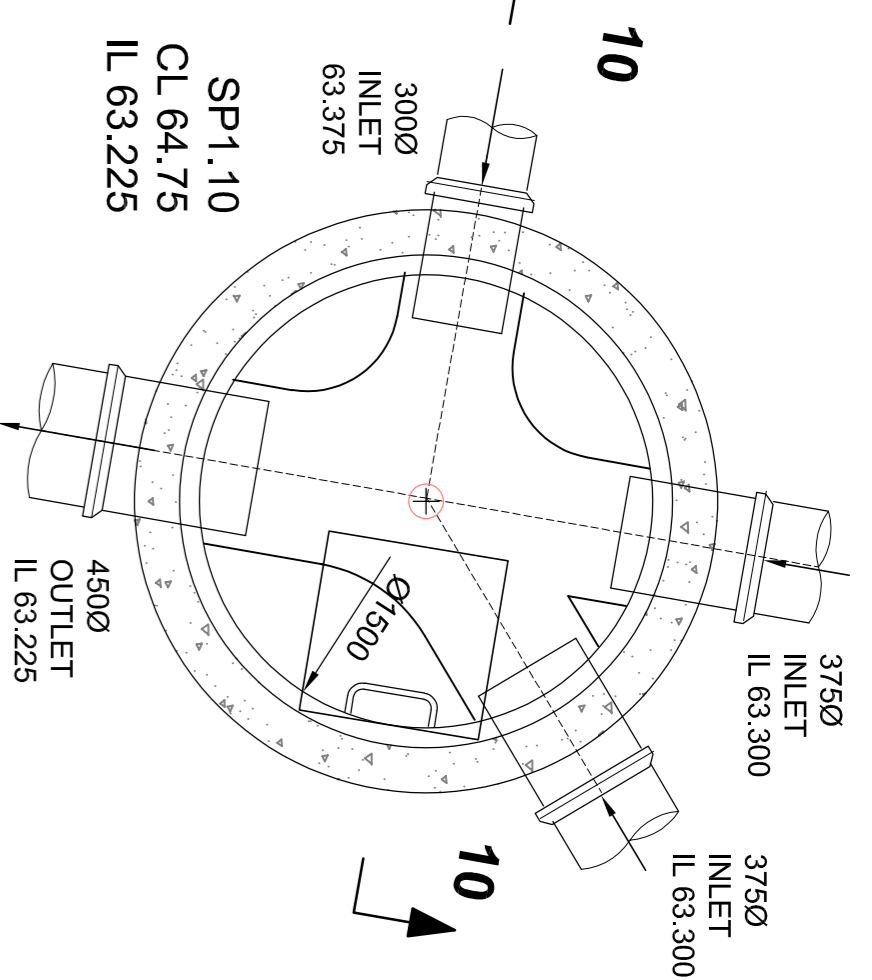
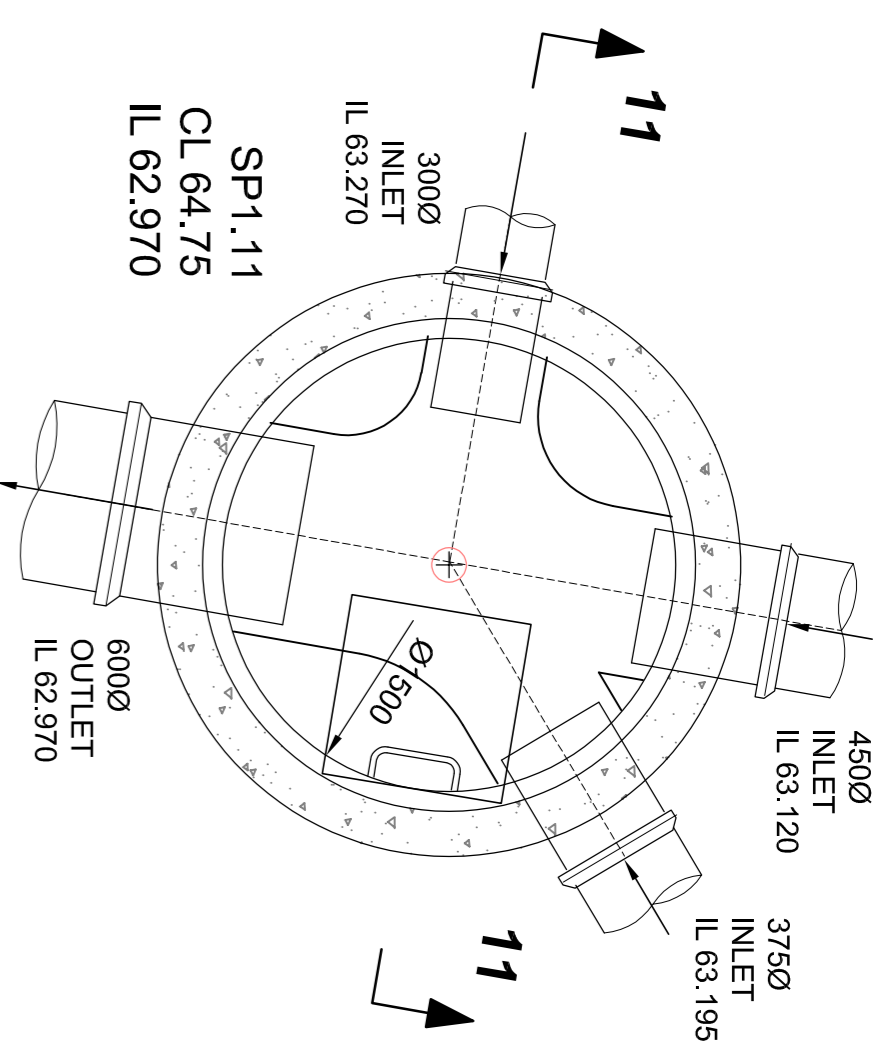


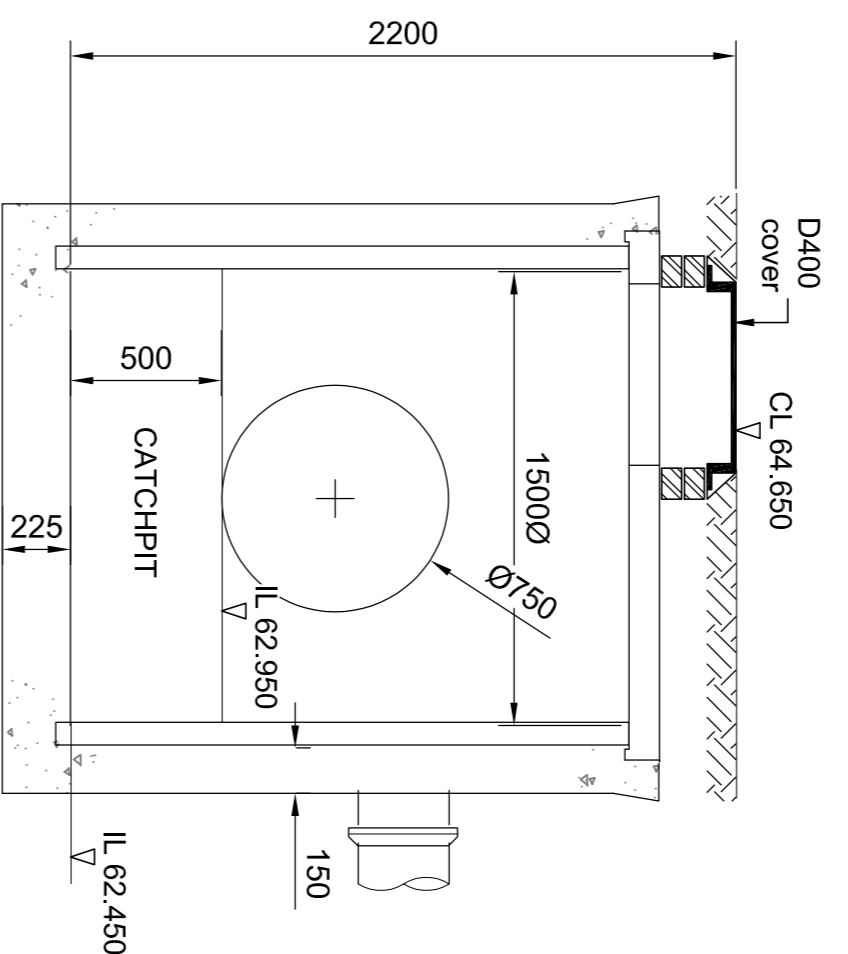
SW MH SP1.1 PLAN (1:25)



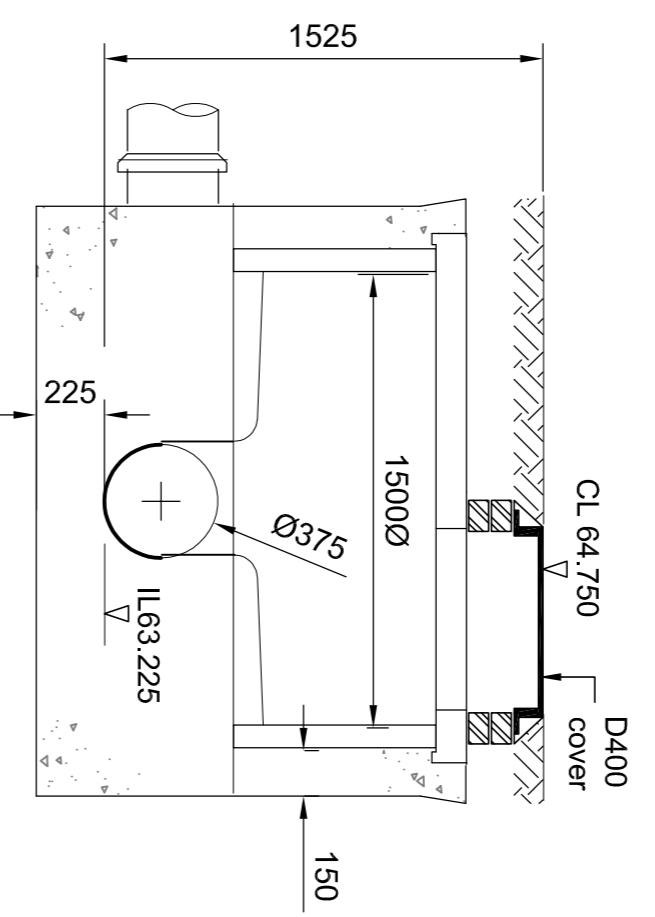
SW MH SP1.10 PLAN (1:25)



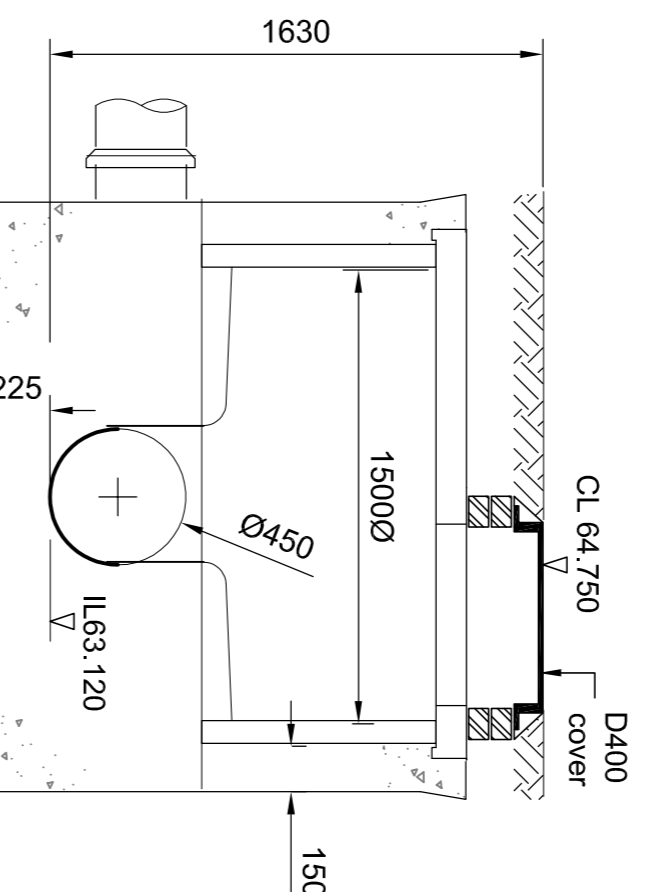
SW MH SP1.11 PLAN (1:25)



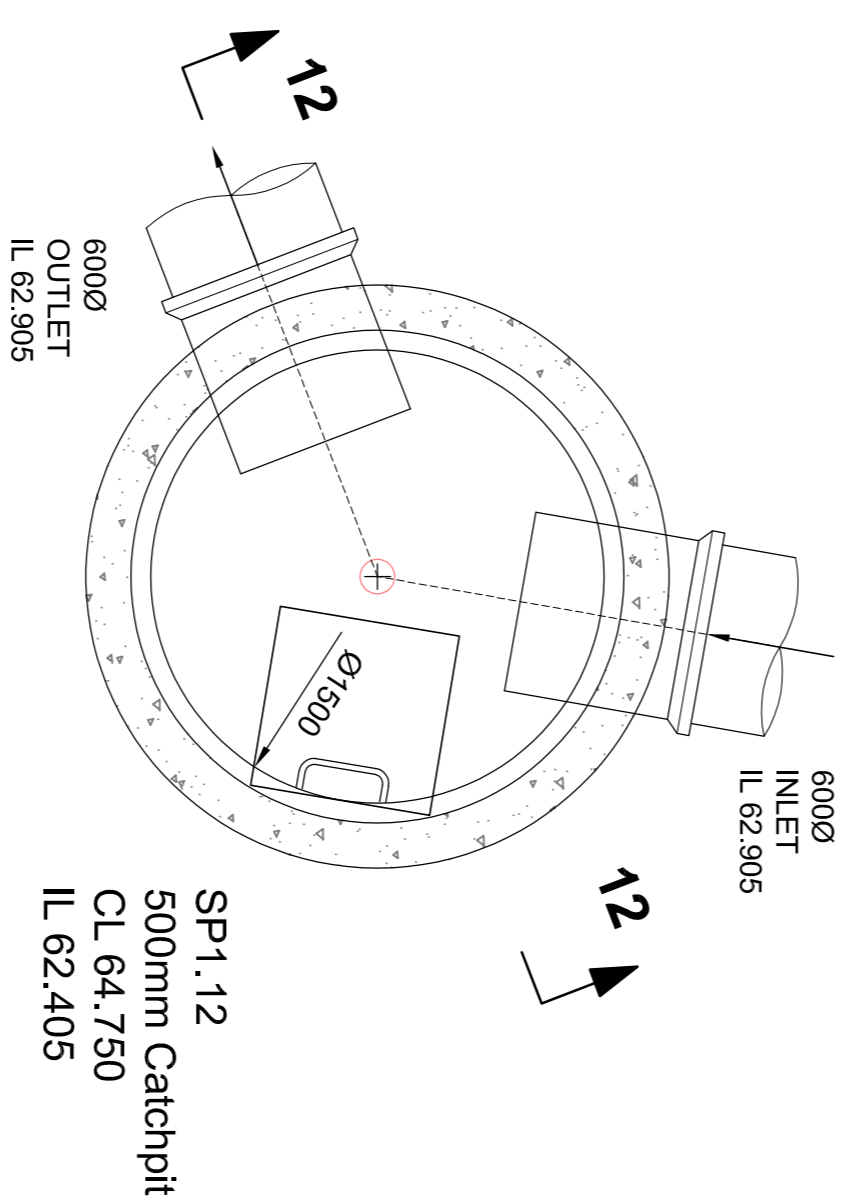
SECTION 1-1 (1:25)



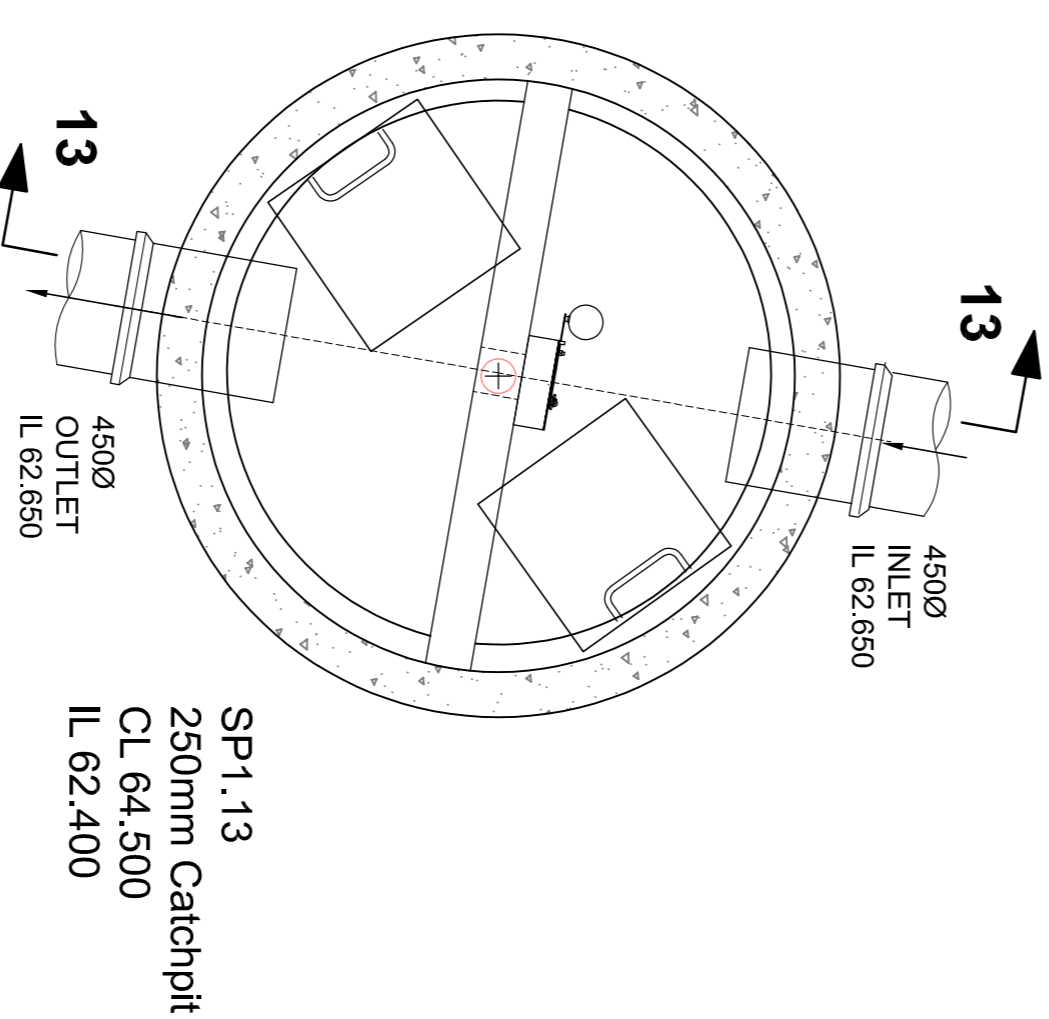
SECTION 10-10 (1:25)



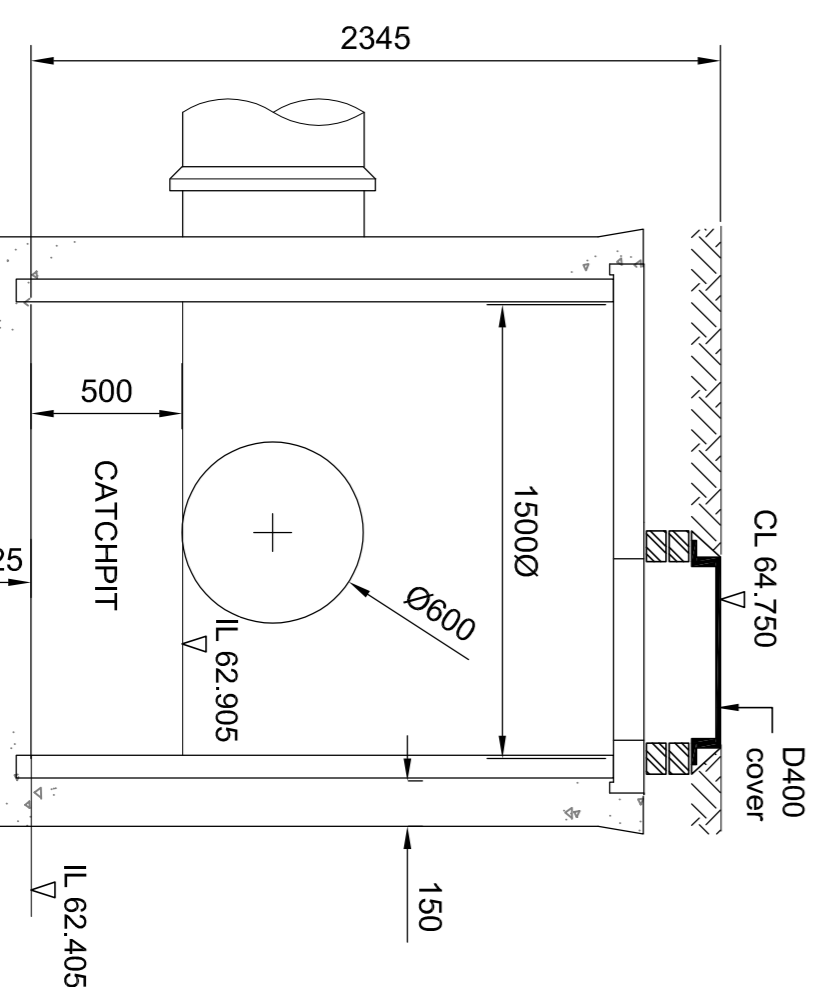
SECTION 11-11 (1:25)



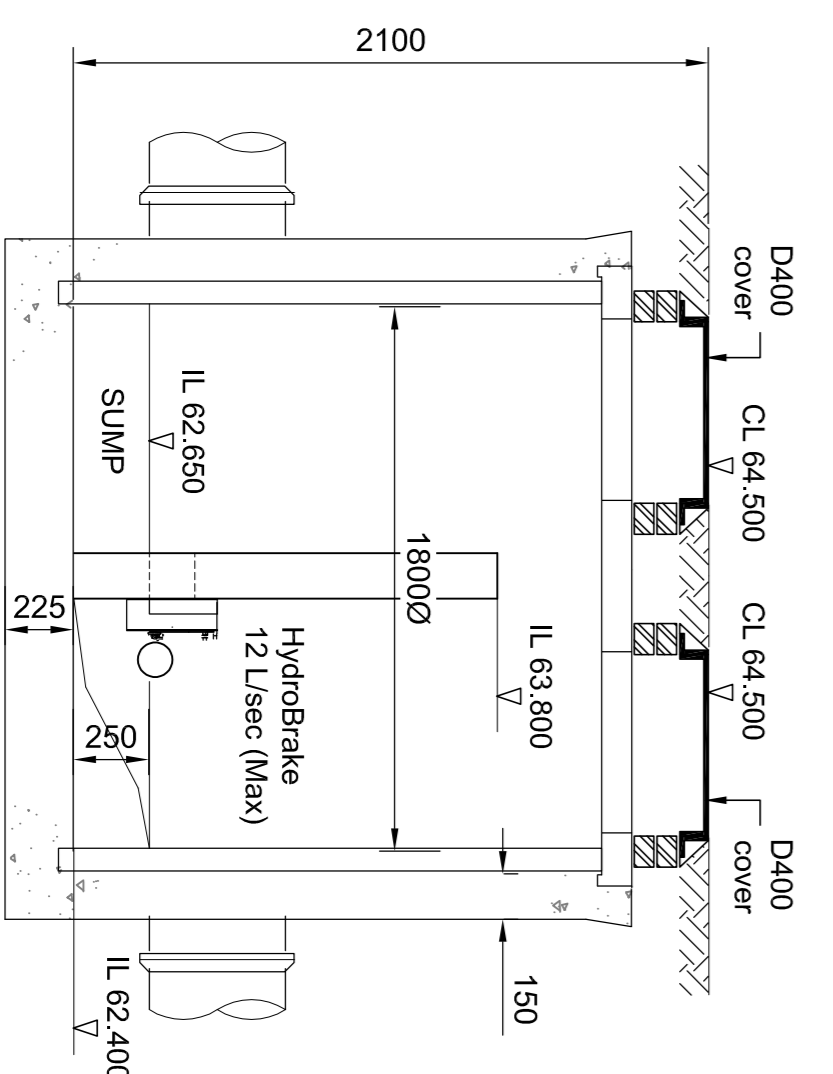
SW MH SP1.12 PLAN (1:25)



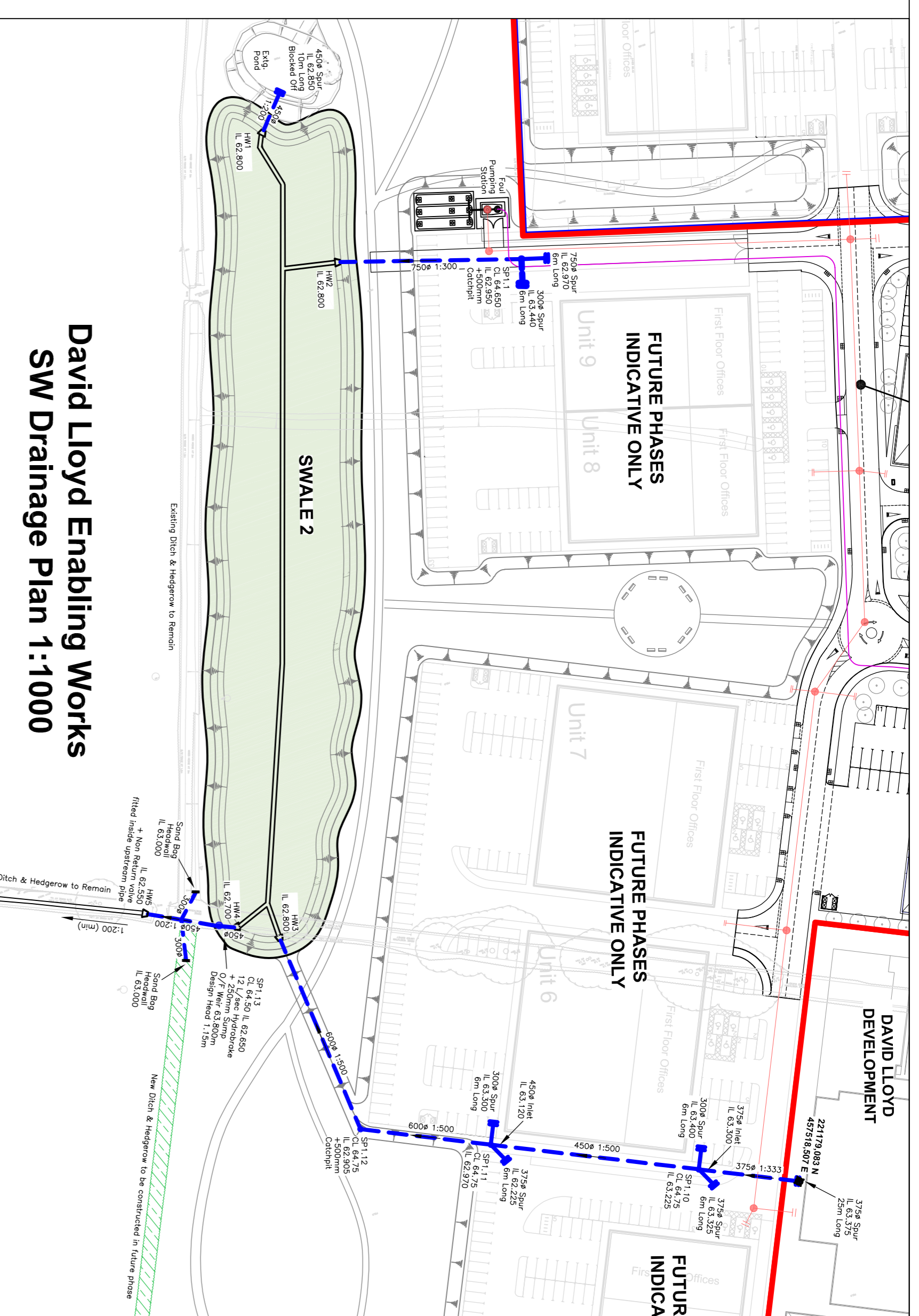
SW MH SP1.13 PLAN (1:25)



SECTION 12-12 (1:25)



SECTION 13-13 (1:25)



David Lloyd Enabling Works
SW Drainage Plan 1:1000

MH REF	CL	IL	DEPTH	DIA	OPENING	COVER	EASTING	NORTHING	COMMENTS
SP1.1	64.650	62.450	2200	1500	600x600	D400	457505.489m	220940.669m	500mm Deep Catchpit Manhole
SP1.10	64.750	63.225	1525	1500	600x600	D400	457540.862m	221167.892m	Perfed Base Manhole
SP1.11	64.750	62.970	1780	1500	600x600	D400	457587.282m	221144.688m	Perfed Base Manhole
SP1.12	64.750	62.405	2345	1500	600x600	D400	457614.871m	221130.328m	Perfed Base 500mm Dp Catchpit Manhole
SP1.13	64.500	62.400	2100	1800	600x600	D400	457632.153m	221070.543m	12 L/Sec Hydrobrake fitted to internal wall + 250mm Sump to fill device

FINAL CONSTRUCTION ISSUE

Rev	Date	Revision Description
B	18.10.21	FINAL CONSTRUCTION ISSUE
A	15.02.21	CONSTRUCTION ISSUE

Revision Schedule

Catalyst Bicester
Wendlebury Road

Albion Land Plc.

Client:
Albion Land Plc.
ENABLING WORKS
SW MANHOLE DETAILS (SP1.10-SP1.13)

BAILEY JOHNSON HAYES
Consulting Engineers

STABINS: Suite 4, Phoenix House, 63 Campfield Rd, STABINS, HERS ALI 5PL
MANCHESTER: Granada House, John Dalton Street, MANCHESTER, M2 6FW

Scale: 1:1000, 25 @A1

Date: 11.12.20

Drawn: JNG

S1358-PH1-23B