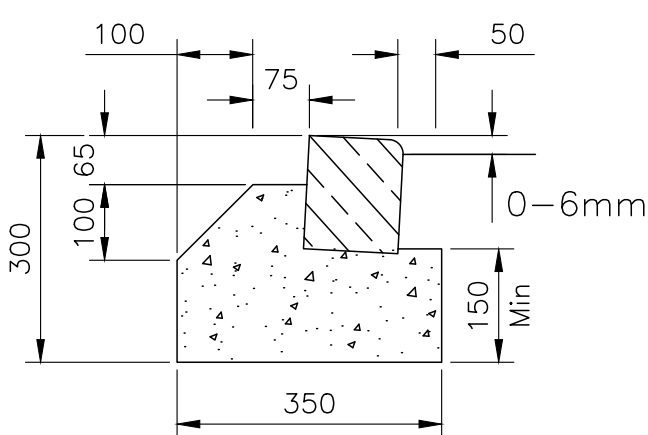
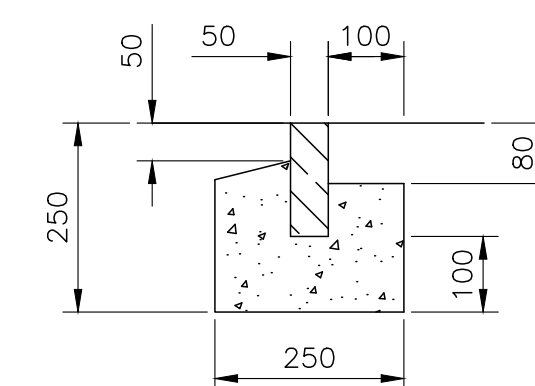


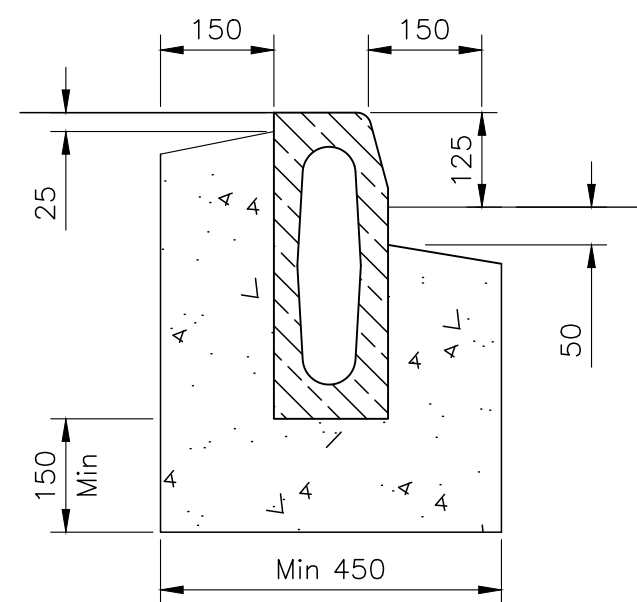
HALF BATTERED KERB (HB2)
Precast concrete kerb to BS EN 1340
Hydraulically pressed 125x255mm with
125mm upstand with ST2 C10 concrete
concrete haunch & bedding



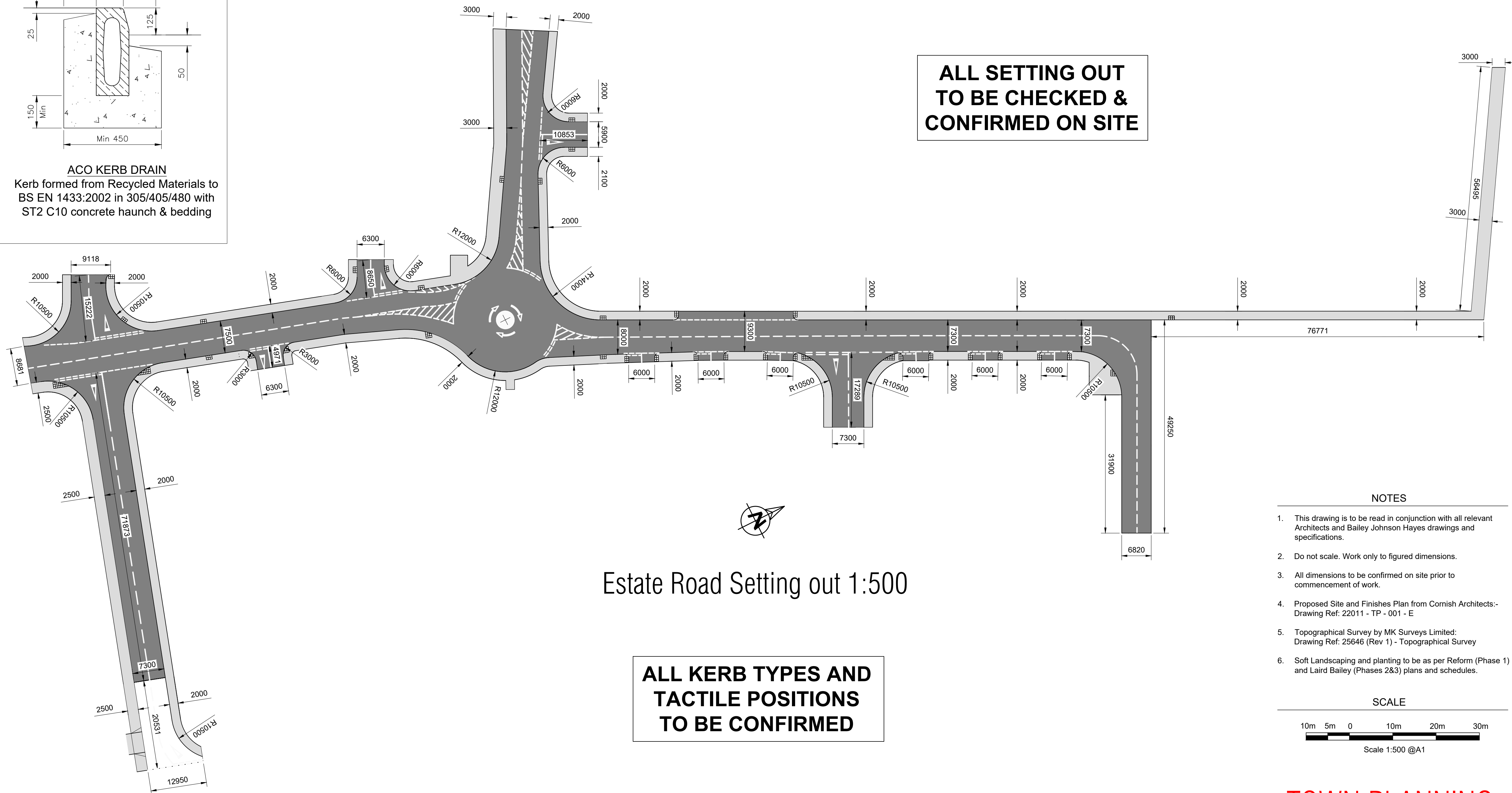
BULLNOSED KERB (BN3)
Precast concrete kerb to BS EN 1340
Hydraulically pressed 125x150 with
0-6mm upstand type BN with ST2 C10
concrete haunch & bedding



EDGING KERB (FLUSH)
Precast concrete kerb to BS EN 1340
Hydraulically pressed 50x150mm type
EF square top kerb laid flush with
ST2 C10 concrete haunch



ACO KERB DRAIN
Kerb formed from Recycled Materials to
BS EN 1433:2002 in 305/405/480 with
ST2 C10 concrete haunch & bedding



Estate Road Setting out 1:500

NOTES

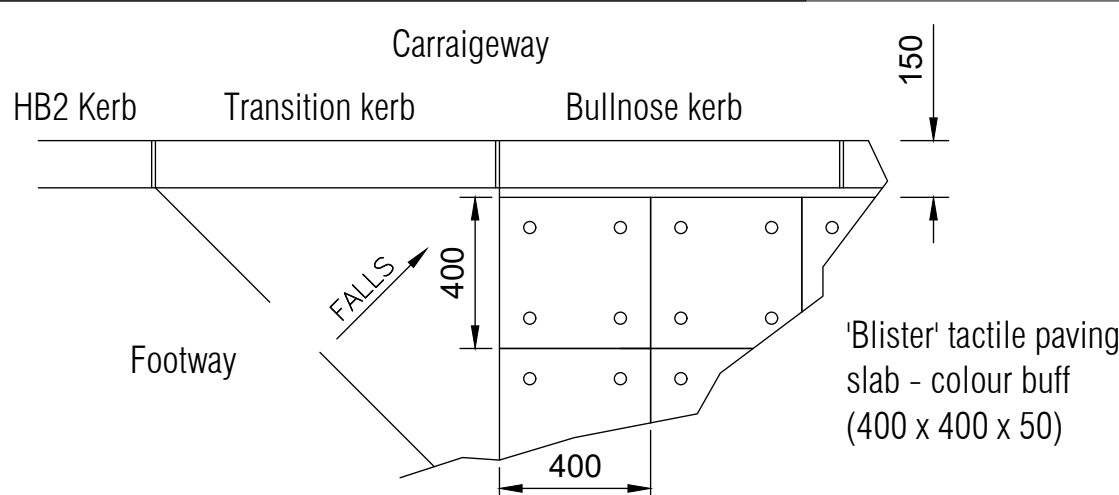
1. This drawing is to be read in conjunction with all relevant Architects and Bailey Johnson Hayes drawings and specifications.
2. Do not scale. Work only to figured dimensions.
3. All dimensions to be confirmed on site prior to commencement of work.
4. Proposed Site and Finishes Plan from Cornish Architects:- Drawing Ref: 22011 - TP - 001 - E
5. Topographical Survey by MK Surveys Limited: Drawing Ref: 25646 (Rev 1) - Topographical Survey
6. Soft Landscaping and planting to be as per Reform (Phase 1) and Laird Bailey (Phases 2&3) plans and schedules.

SCALE

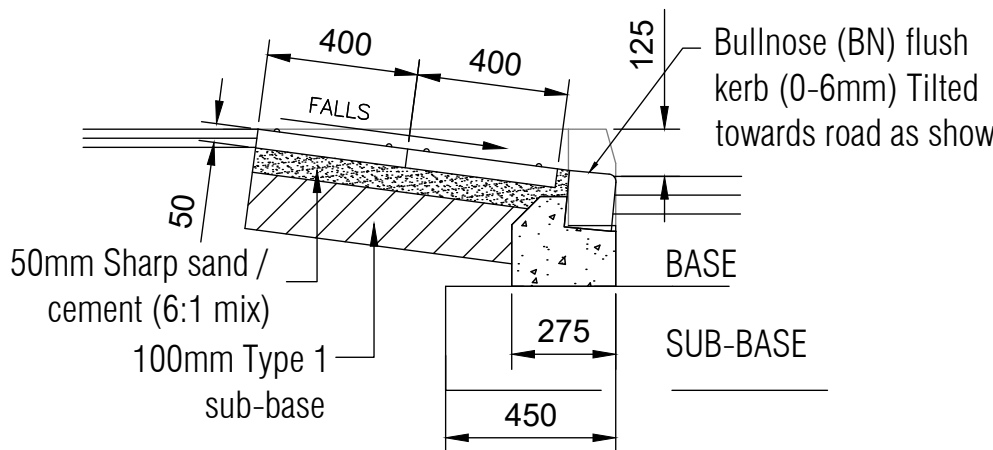


Scale 1:500 @A1

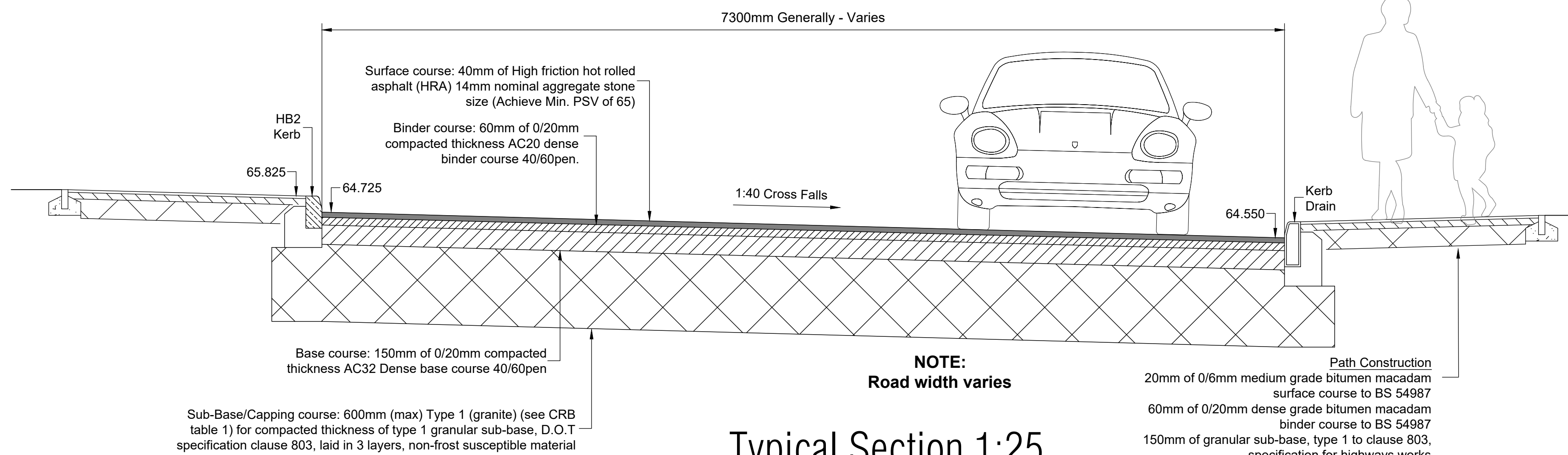
TOWN PLANNING



Tactile paving plan 1:20



Section 1:20



Typical Section 1:25

Rev	Date	Revision Description
Revision Schedule		
Project Title		
Catalyst Bicester		
Wendlebury Road, Bicester		
Client		
ALBION LAND		
Drawing Title		
PHASE 2		
Estate Road Setting Out Details		
BAILEY JOHNSON HAYES		
Consulting Engineers		
ST ALBANS: Suite 4, Phoenix House, 63 Campfield Rd, ST ALBANS, Herts AL1 5FL		
MANCHESTER: Grange House, John Dalton Street, MANCHESTER, M2 6FW		
Scale	1:500 @A1	Drawing Number
Date	30.11.22	S1358-PH2-15
Drawn	DC	