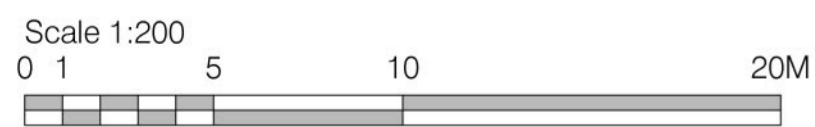
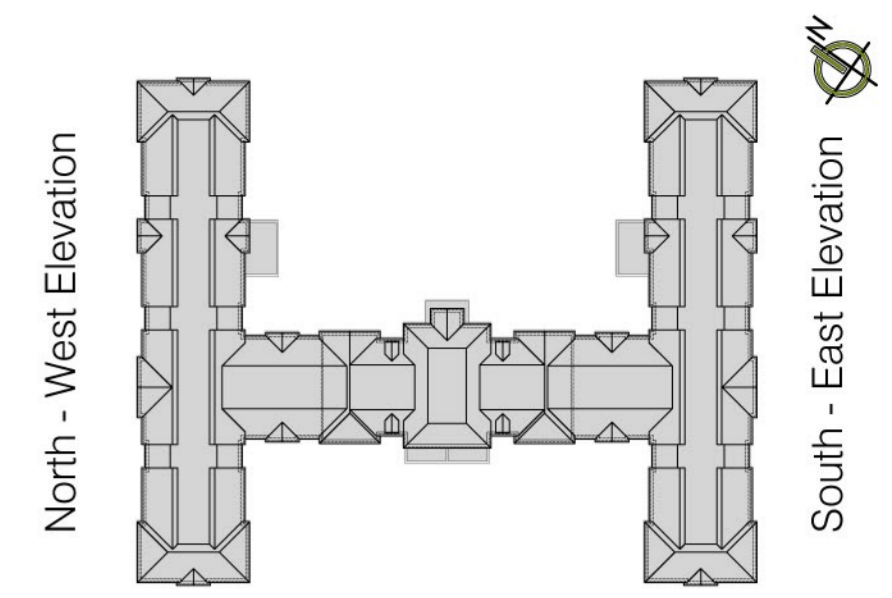


- Roof: Grey Concrete Tiles
- Red Brick With Matching Mortar
- Soft Cream Render
- Reconstituted Stone Detailing
- Windows And Doors: White uPVC
- Dark Grey uPVC RWP
- Dark Grey Fascias
- Glazed Links: Dark Grey uPVC with glass spandrel panels



This drawing is covered by copyright which remains with KWL Architects Ltd. and must not be reproduced in any form without their express permission. This drawing should not be scaled for construction purposes, use figured dimensions only.

Revision	Date	Description	Drawn
Rev			

Client MERCIAN GROUP			
Project CARE HOME DEVELOPMENT AT LONGFORD PARK ROAD, BODICOTE, OX15 4AD			
Drawing PROPOSED ELEVATIONS (SHEET 2 OF 2)			
Scale 1:200 @ A1	Date 02.11.2022	Drawn ZK	Checked MP
Job No. 5196	Dwg No. PL08	Revision	Status PLANNING



KWL Architects
Poplar House Hazell Drive
Newport S.Wales NP108FY
T.+44 (0)1633 81 71 71
www.kwlarchitects.co.uk