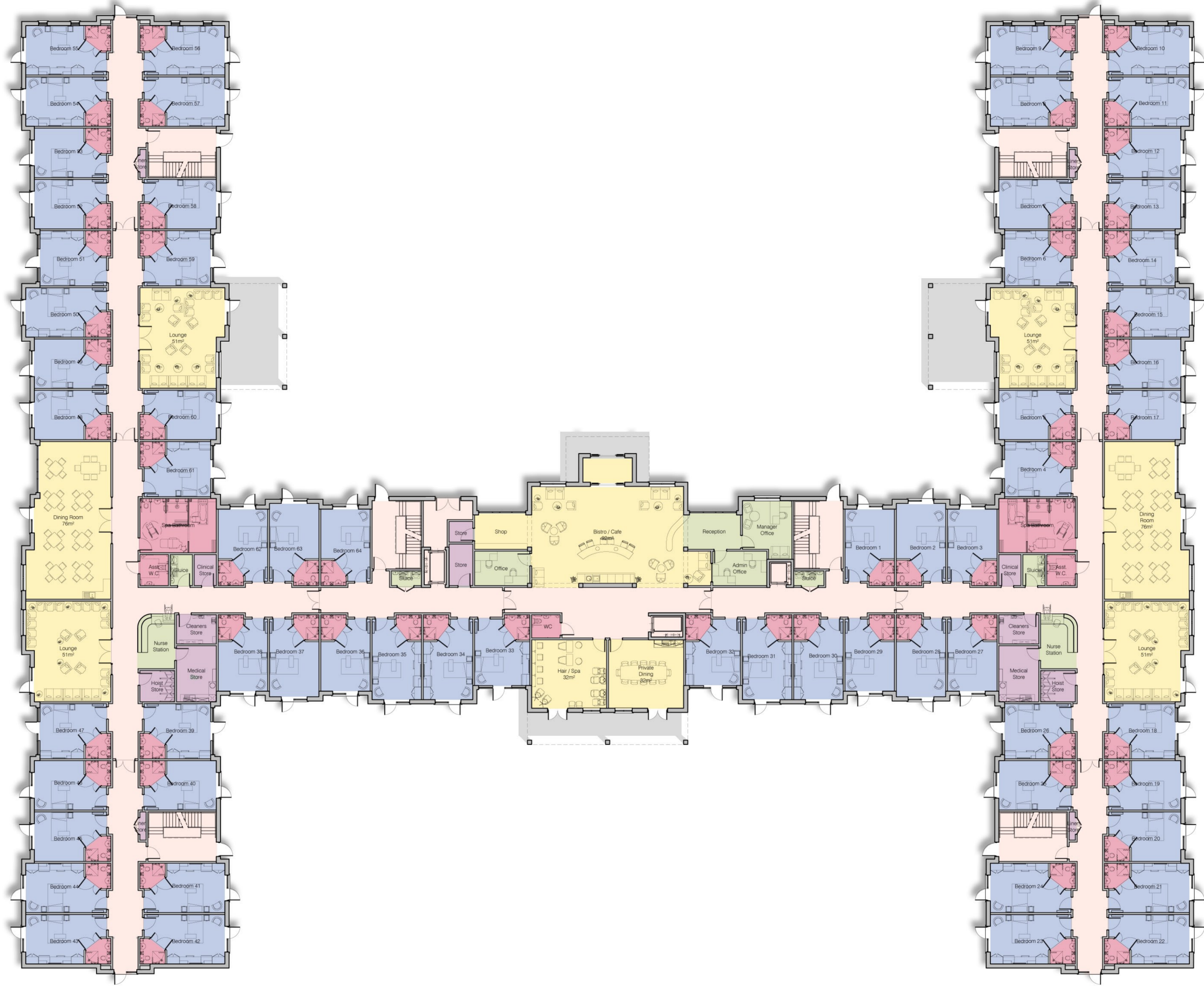
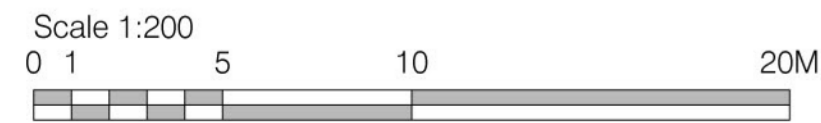




- Communal Areas
- Circulation Areas
- Stores and Plant Rooms
- Staff
- Bathrooms and Wet Rooms
- Bedrooms



Ground Floor Plan | 64 Bedrooms | G.I.A 3127m²



This drawing is covered by copyright which remains with KWL Architects Ltd. and must not be reproduced in any form without their express permission. This drawing should not be scaled for construction purposes, use figured dimensions only.

Revision	Date	Description	Drawn
Rev			

Client MERCIAN GROUP			
Project CARE HOME DEVELOPMENT AT LONGFORD PARK ROAD, BODICOTE, OX15 4AD			
Drawing PROPOSED GROUND FLOOR PLAN			
Scale	Date	Drawn	Checked
1:200 @ A1	01.11.2022	ZK	MP
Job No.	Dwg No.	Revision	Status
5196	PL03		PLANNING

KWL Architects
Poplar House Hazell Drive
Newport S.Wales NP108FY
T. +44 (0)1633 81 71 71
www.kwlarchitects.co.uk