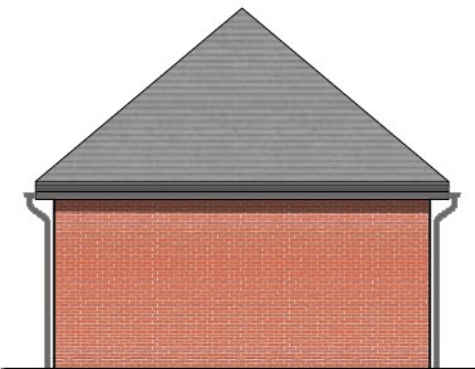


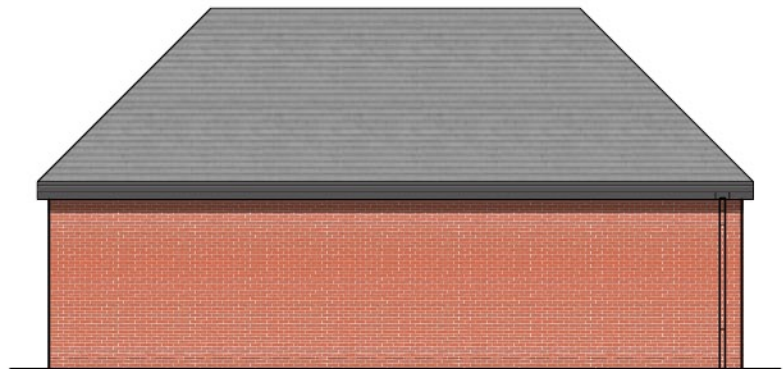
FRONT ELEVATION



SIDE ELEVATION 1



REAR ELEVATION



SIDE ELEVATION 2



- Roof: Grey Concrete Tiles
- Red Brick With Matching Mortar
- Dark Grey uPVC RWP
- Dark Grey Fascias

Revision	Date	Description	Drawn
Rev			

Client MERCIAN GROUP			
Project CARE HOME DEVELOPMENT AT LONGFORD PARK ROAD, BODICOTE, OX15 4AD			
Drawing PROPOSED REFUSE STORE			
Scale 1/100 @ A4	Date 02.11.2022	Drawn ZK	Checked MP
Job No. 5196	Dwg No. PL10	Revision	Status



Poplar House Hazell Drive  
Newport S.Wales NP108FY  
T. +44 (0)1633 81 71 71  
[www.kwlarchitects.co.uk](http://www.kwlarchitects.co.uk)

This drawing is covered by copyright which remains with KWL Architects Ltd. and must not be reproduced in any form without their express permission. This drawing should not be scaled for construction purposes, use figured dimensions only.

**PLANNING**