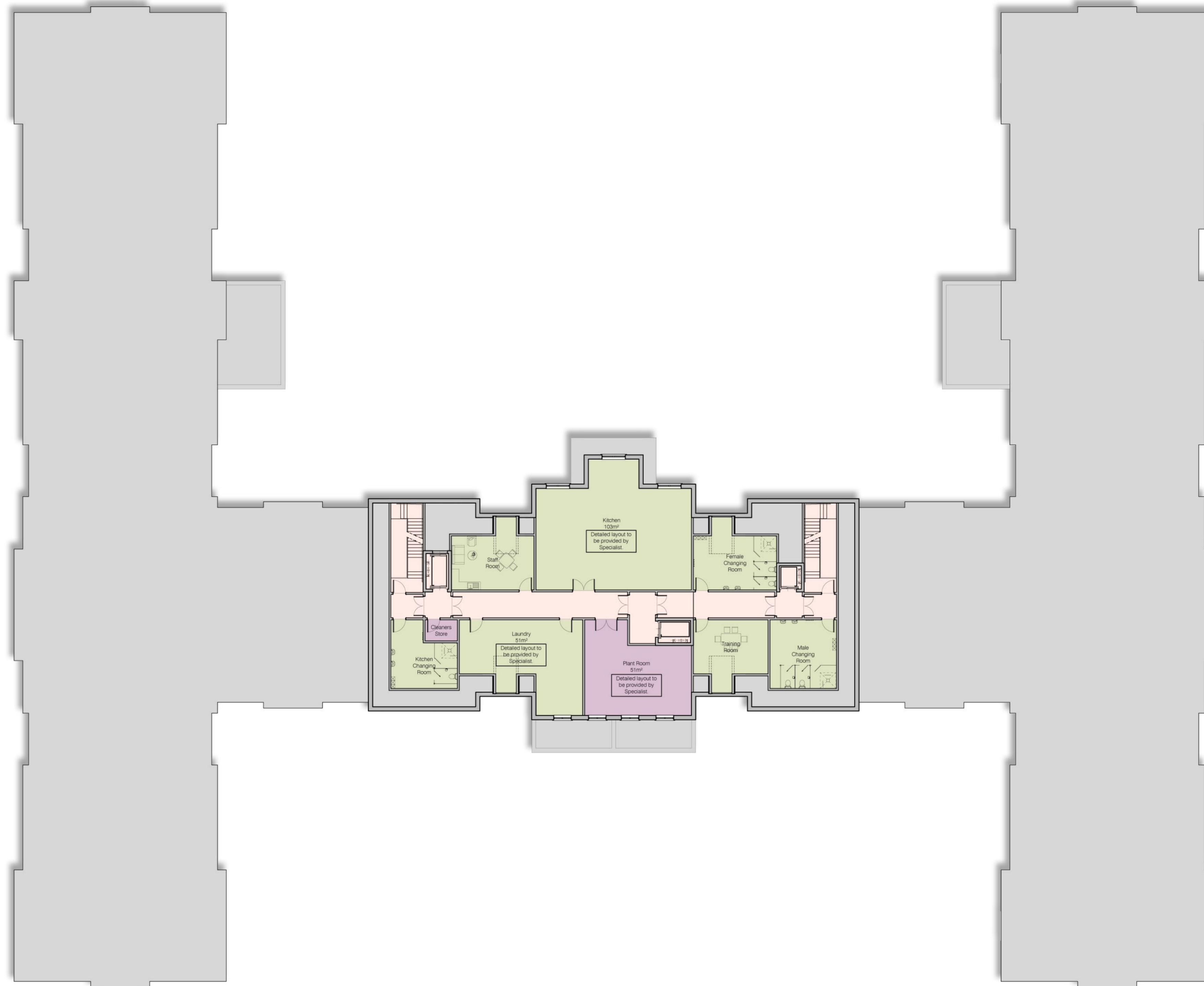




- Communal Areas
- Circulation Areas
- Stores and Plant Rooms
- Staff
- Bathrooms and Wet Rooms
- Bedrooms



Second Floor Plan I G.I.A 475m<sup>2</sup>  
 Scale 1:200  
 0 1 5 10 20M

Revision	Date	Description	Drawn
Rev			

Client MERCIAN GROUP			
Project CARE HOME DEVELOPMENT AT LONGFORD PARK ROAD, BODICOTE, OX15 4AD			
Drawing PROPOSED SECOND FLOOR PLAN			
Scale 1:200 @ A1	Date 01.11.2022	Drawn ZK	Checked MP
Job No. 5196	Dwg No. PL05	Revision	Status PLANNING

**KWL Architects**  
 Poplar House Hazell Drive  
 Newport S.Wales NP108FY  
 T. +44 (0)1633 81 71 71  
[www.kwlarchitects.co.uk](http://www.kwlarchitects.co.uk)

This drawing is covered by copyright which remains with KWL Architects Ltd. and must not be reproduced in any form without their express permission. This drawing should not be scaled for construction purposes, use figured dimensions only.