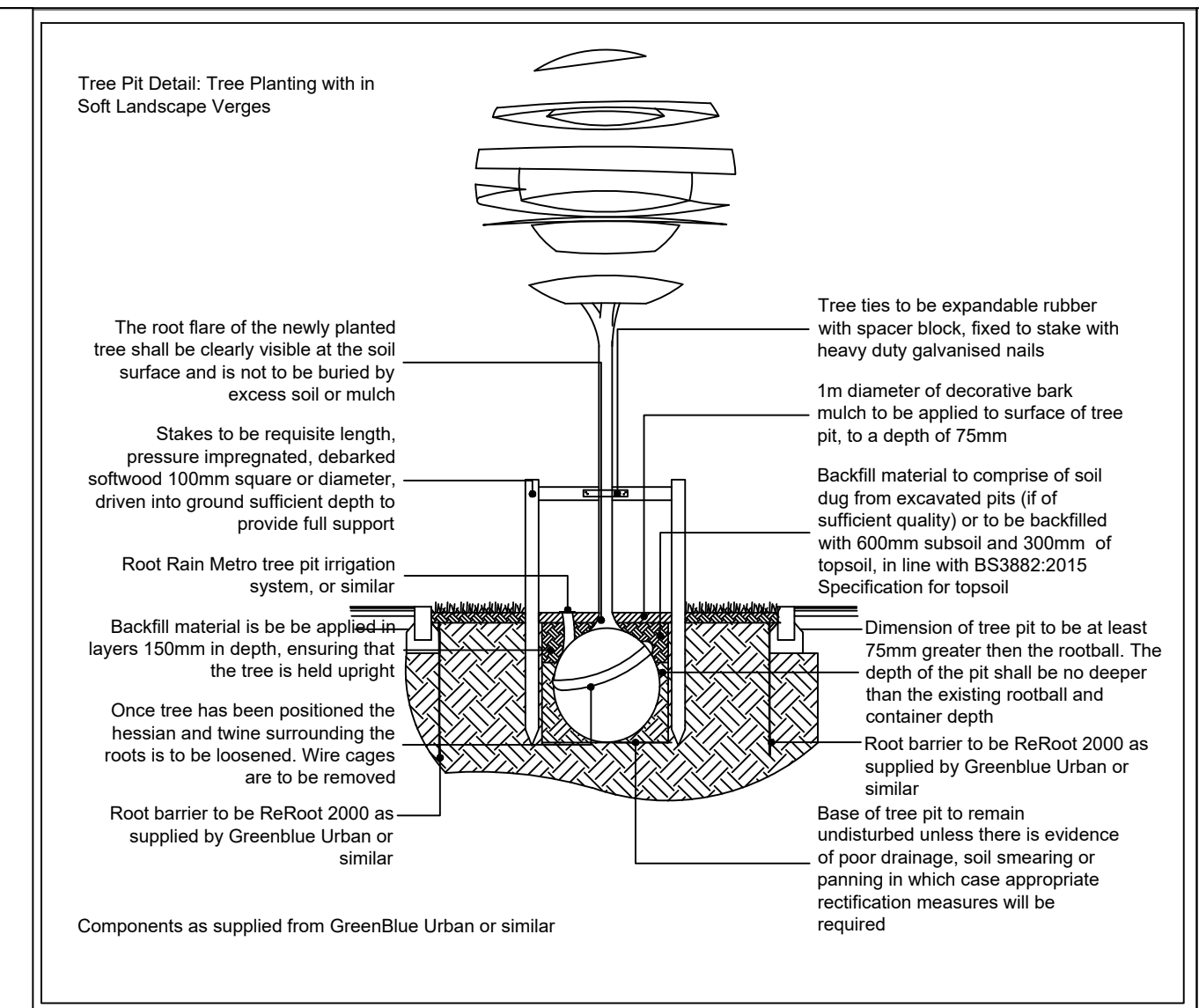
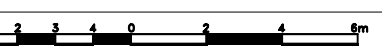


The diagram shows a cross-section of a container with two layers. The top layer is a solid orange rectangle. The bottom layer is a rectangle filled with small orange circles. A U-shaped pipe is connected to the bottom layer. The pipe has four square valves: one at the top left, one at the top right, one at the bottom left, and one at the bottom right. The bottom section of the pipe is highlighted in blue.



In case of quantity discrepancies, the quantities on the plan(s) take precedent over the quantities shown in the planting schedule.

NOTES:
DO NOT SCALE FROM DRAWING
NOT FOR CONSTRUCTION, FOR PLANNING
PURPOSES ONLY



D	06.12.22	Minor layout revision	SR
C	29.11.22	Amendments to tree species	SR
B	23.11.22	Layout revision and LPA comments	SR
A	26.08.22	Layout revision and LPA comments	SR
Rev	Date	Details	Drawn



HEAD OFFICE
Rodbourn Rail Business Centre, Grange Lane,
Malmesbury, SN16 0ES
Tel: 01666 825646

4 & 5 The Old Mill, Fry's Yard, Bridge Street,
Godalming, GU7 1HP
Tel: 01483 425714

Suite 6, Crescent House, Yonge Close,
Eastleigh, SO50 9SX
Tel: 02382 026300

email: mail@acdenv.co.uk
www.acdenvironmental.co.uk



scheme: Land off Berry Hill Road,
Adderbury Banbury

client: Hayfield Homes
drawing: Landscape Proposals

date: March 2022

scale: 1:200@A1
drawing no: HAY23648-11D Sheet 3 of 3

drawn: SR checked: JC

Copyright of ACD Environmental Ltd. All rights described in Chapter IV of the Copyright, Designs and Patents Act 1988 have been generally asserted: 2011. Copyright of this plan remains with ACD until all fees have been paid in full.