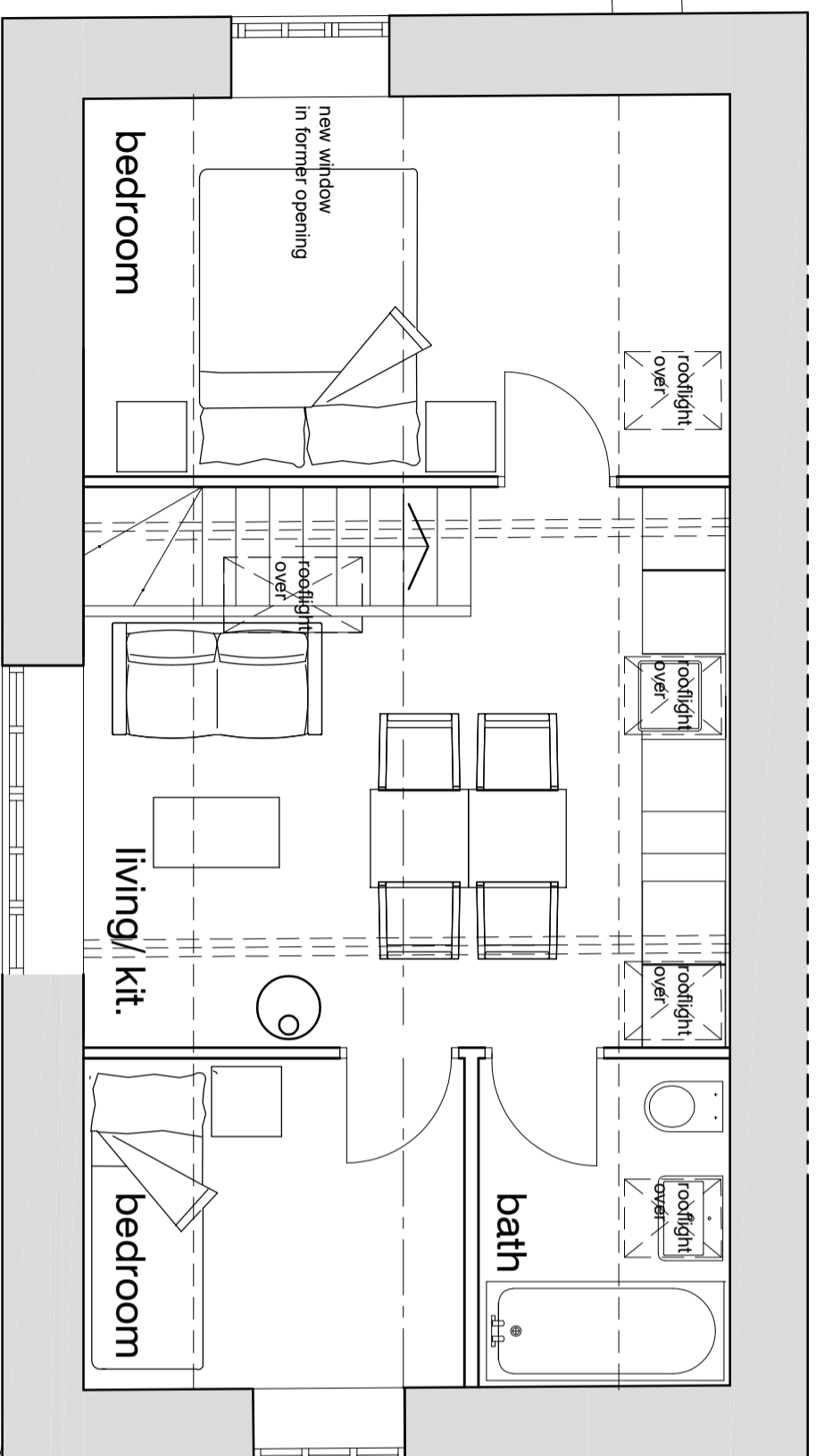


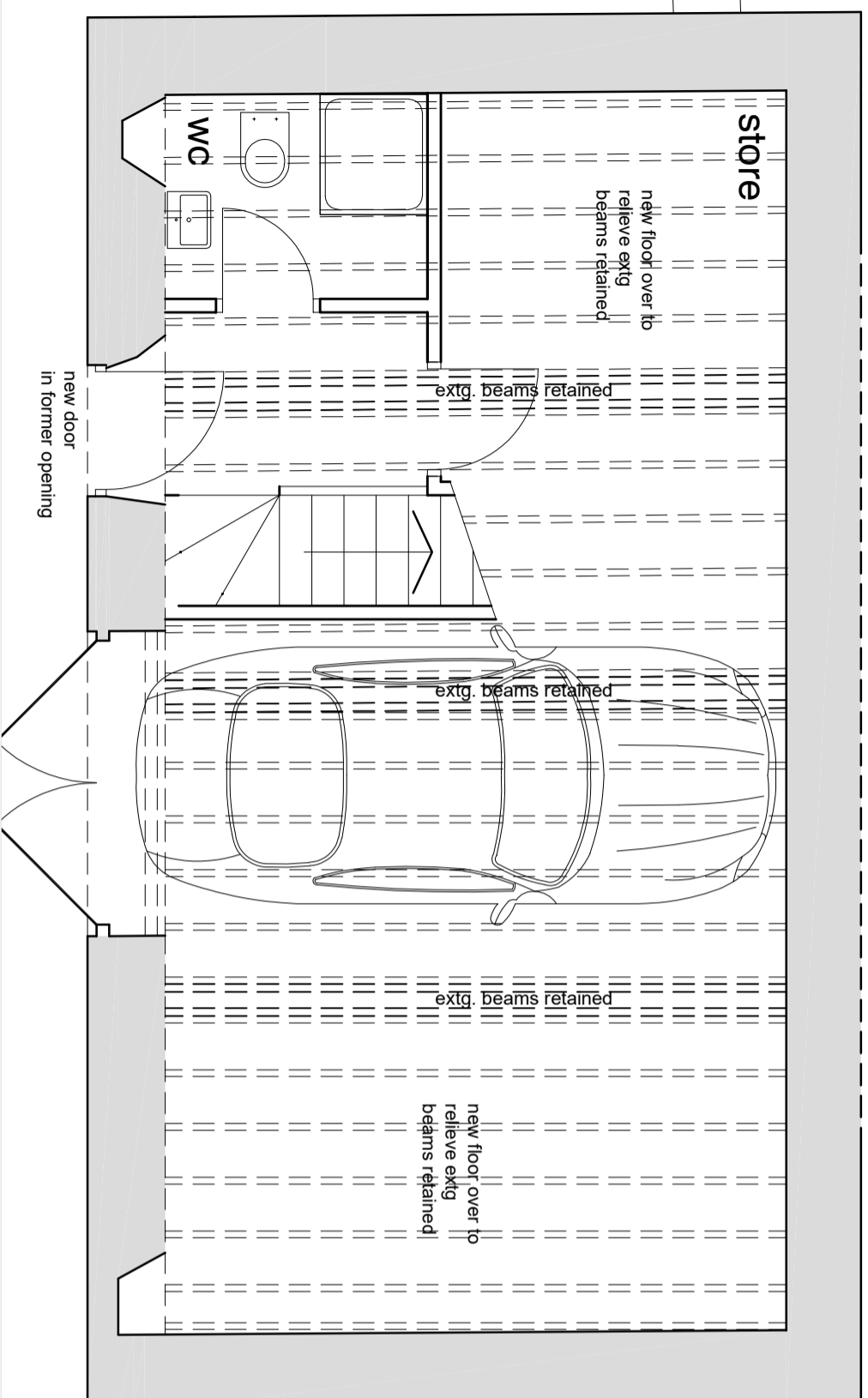
# FIRST FLOOR PLAN



new window  
in former opening

new window in  
former opening enlarged

# GROUND FLOOR PLAN



new floor over to  
relieve extg  
beams retained

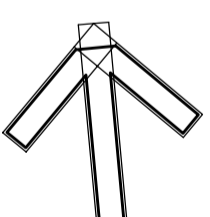
extg. beams retained

extg. beams retained

extg. beams retained

new floor over to  
relieve extg  
beams retained

new door  
in former opening



REV	DATE	BY	DESCRIPTION	CHK	APP
DRAWING STATUS					
<b>PLANNING</b>					
<b>QUAY ASSOCIATES</b>					
THE POUND SHENNINGTON OXFORDSHIRE OX15 6NB					
+44 (0) 7798 525 535 ar@quaytecl.com					
CLIENT <b>Bruce Roe Esq.</b>					
PROJECT <b>(formerly) THE NORTH ARMS WROXTON OX15 6PY</b>					
TITLE <b>OUTBUILDING FLOOR PLANS AS PROPOSED</b>					
SCALE	DATE	DESIGN/DRAWN	CHECKED	APPROVED	SHT
1:50	OCT 2022				
JOB No. <b>22070</b>					
DRAWING No. <b>22070/P01</b>					
					REV