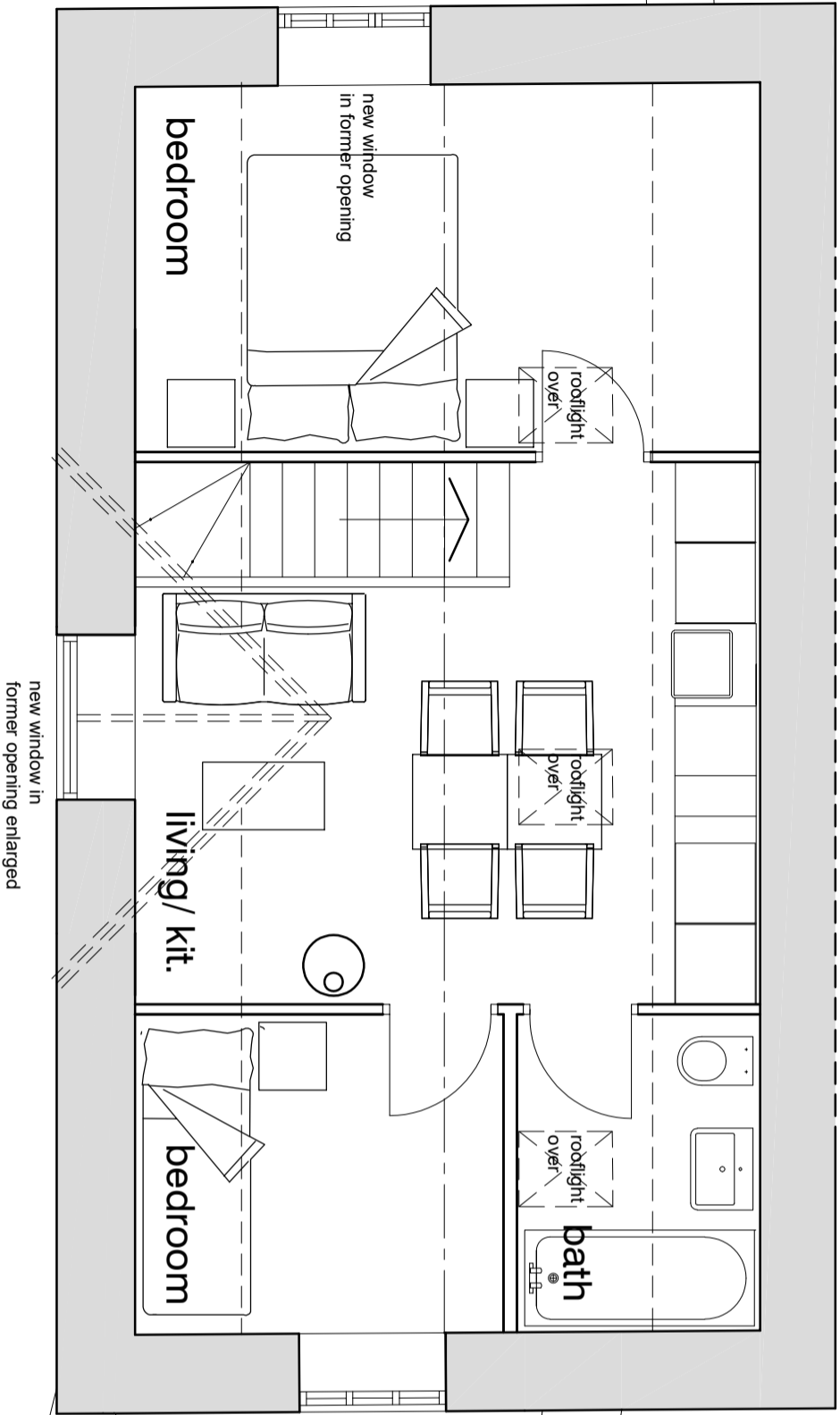


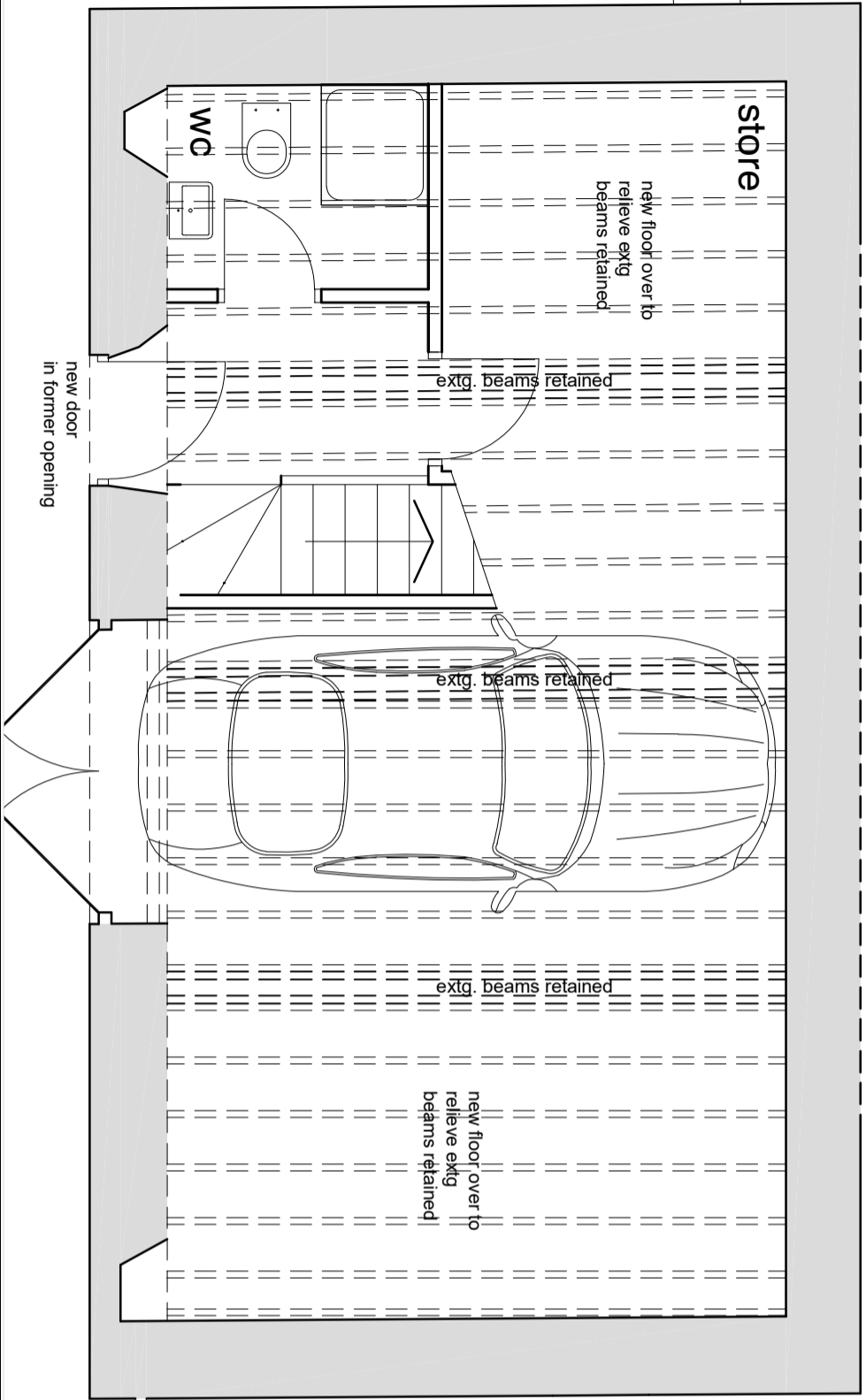
FIRST FLOOR PLAN



new window in former opening

new window in former opening enlarged

GROUND FLOOR PLAN



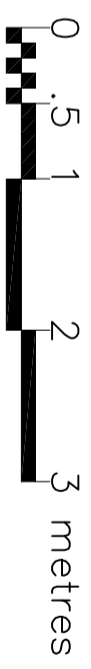
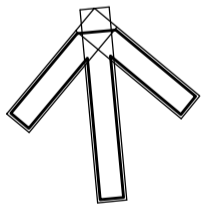
new floor over to relieve extg beams retained

extd. beams retained

extd. beams retained

extd. beams retained

new door in former opening



DRAWING STATUS		PLANNING	CHK	APP
REV	DATE	BY	DESCRIPTION	CHK
B	16.03.23	BT	PROPOSALS WORD UP ROOFSLOPE	CHK
A	27.02.23	BT	REDUCED ROOFSLOPE - NEW DESIGN	CHK
				APP
QUAY ASSOCIATES				
THE POUND SHENINGTON OXFORDSHIRE OX15 6NB				
+44 (0) 7798 525 535 ar@quaytech.com				
Client: Bruce Roe Esq.				
PROJECT: (formerly) THE NORTH ARMS WROXTON OX15 6PY				
TITLE: OUTBUILDING FLOOR PLANS AS PROPOSED				
SCALE	DATE	DESIGN/DRAWN	CHECKED	APPROVED
1:50	OCT 2022			
DWG No.				SHT
22070				
DRAWING No.	22070/P01			REV: B