

Wincote

Windows & Doors (Condition 05)

For Cherwell District Council

September 2022

Document History

Rev	Date	Purpose of Issue	Author	Reviewer
-	221007	Planning Condition	DO	HS

Contents

1.0 Introduction

2.0 Design & Materiality

3.0 Drawings

- Typical window

- Typical double door to house (stone lintel)

- Typical double door to barn

(concealed lintel & metal surround)

1.0 Introduction

This document has been produced for formal submission of Condition 05 of the consented demolition and construction of the dwellinghouse at Wincote, Steeple Aston. Ref: 22/01444/F.

This document provides photos of the window sample and drawings of the proposed metal windows and doors.



CGI of the proposed building with the metal casement windows & doors

2.0 Design & Materiality

The metal windows and doors will be made with a Vulcan Black finish as per the photos of the sample (fig. 1 & 2). This material will appear black, as illustrated in the CGIs of the consented scheme, but with a more authentic metal appearance. Should you wish to see a sample on site, please let us know.

Fig. 3 shows the profile and thickness of the frame. Please note that the handles will match the materiality of the frame.

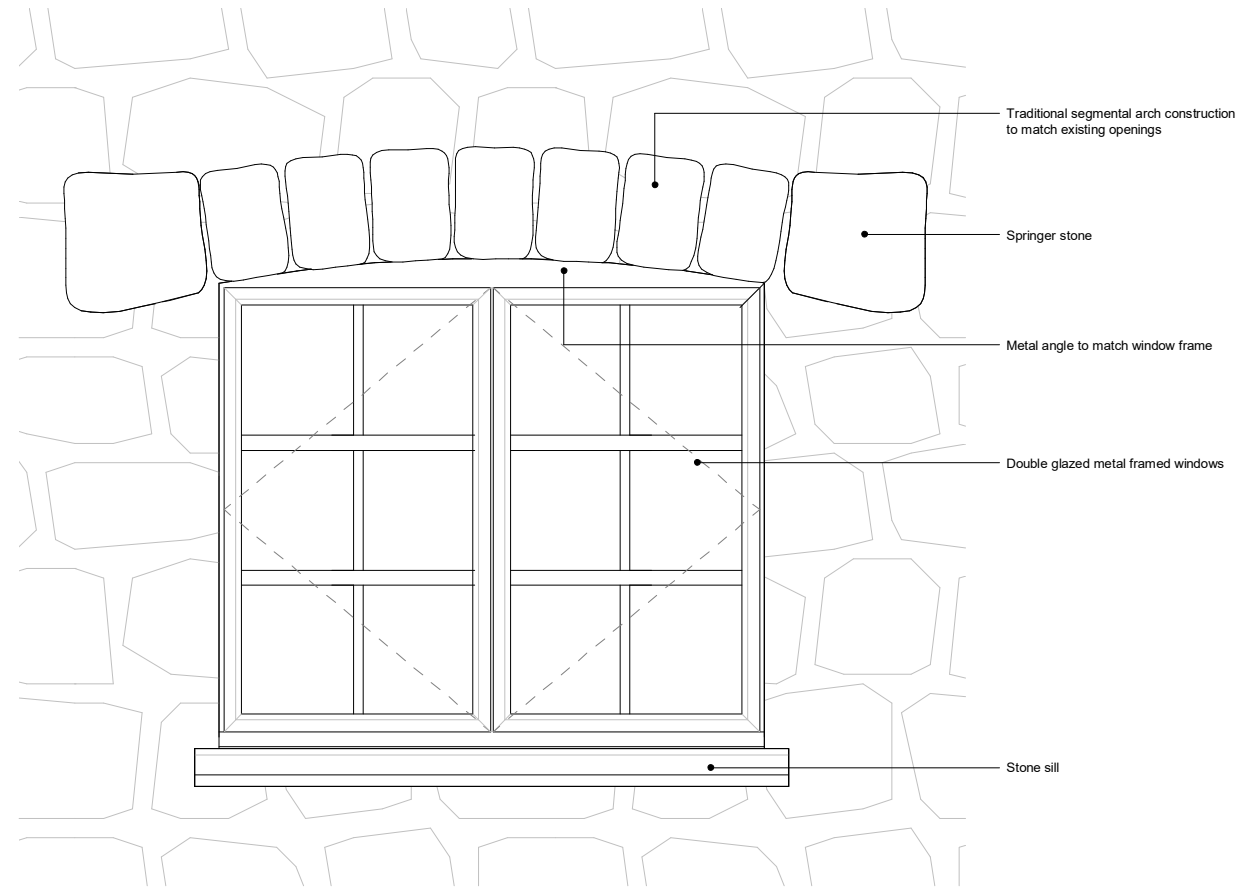
The following pages contain drawings of the proposed window and door elevations and cross sections through the head, cill and jamb, as requested under the condition.



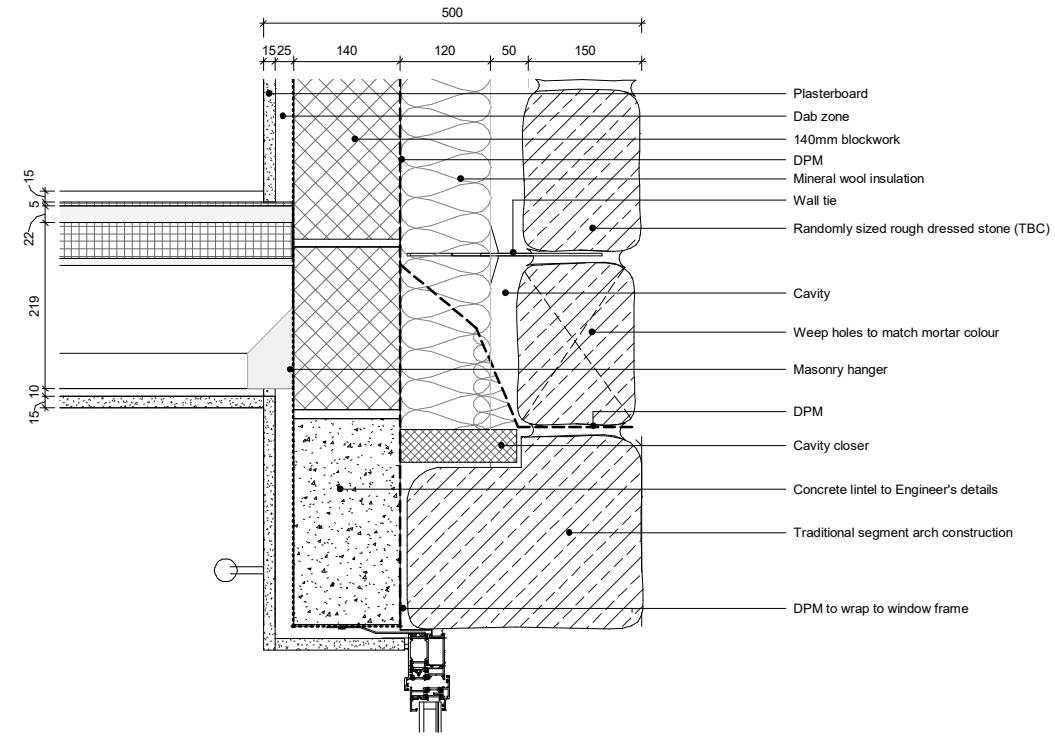
Fig. 1 & 2 - Photos of the window sample in a Vulcan Black finish



Fig. 3 - Example door which captures the profile and thickness of the frame.



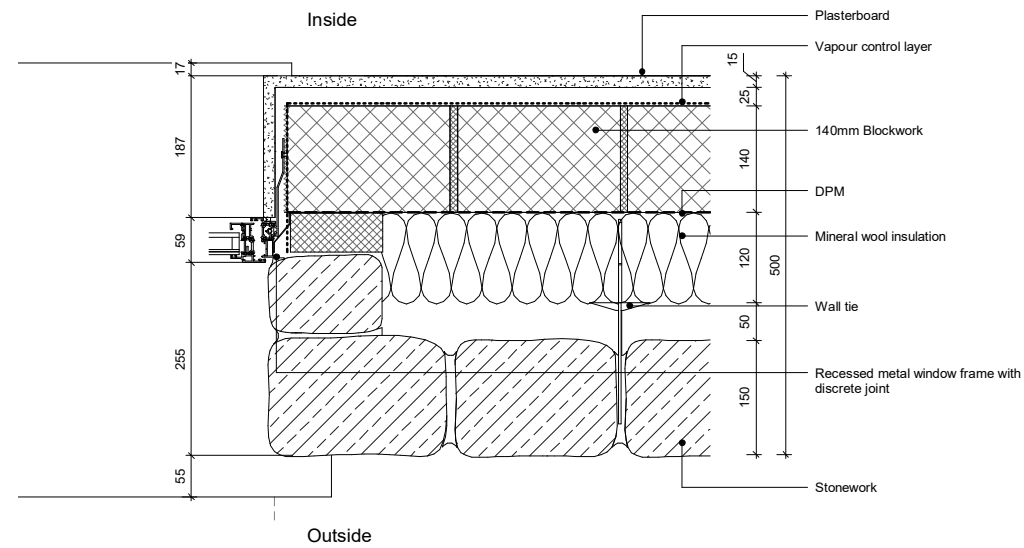
1 Indicative Elevation
1:10



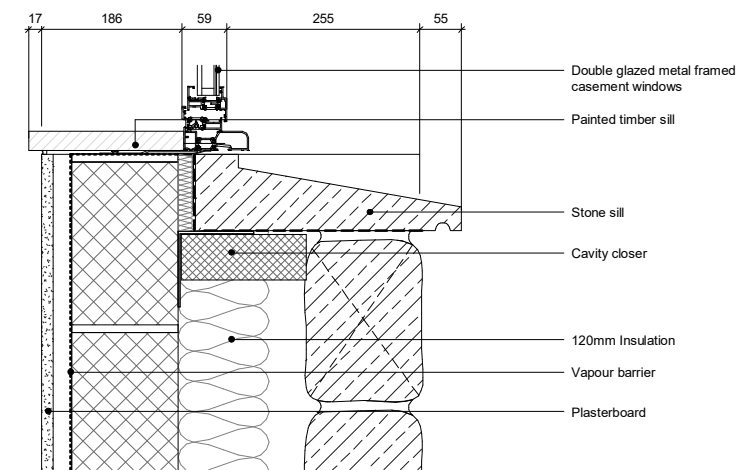
Do not scale from this drawing. All dimensions to be checked on site. All omissions and discrepancies to be reported to the Architect immediately

This work is copyright and shall not be reproduced or used for any other purpose without the written permission of Squire and Partners.

Notes:
Drawings to be read in conjunction with Engineer's information.
Refer to Interior Designer's information for Sanitary and Finishes schedule.
Refer to Interior Designer's information pack for Bathroom, Pantry and Kitchen drawings.



3 Jamb Detail
1:5



2 Head / Base Detail
1:5

Description	Date	Chk	Rev
For Information	09/10/22		P3
For Information	06/09/22		P2
For Tender	22/04/22		P1

SQUIRE & PARTNERS

Squire and Partners LLP
The Department Store
248 Ferndale Road, London SW9 8FR
T: 020 7278 5555

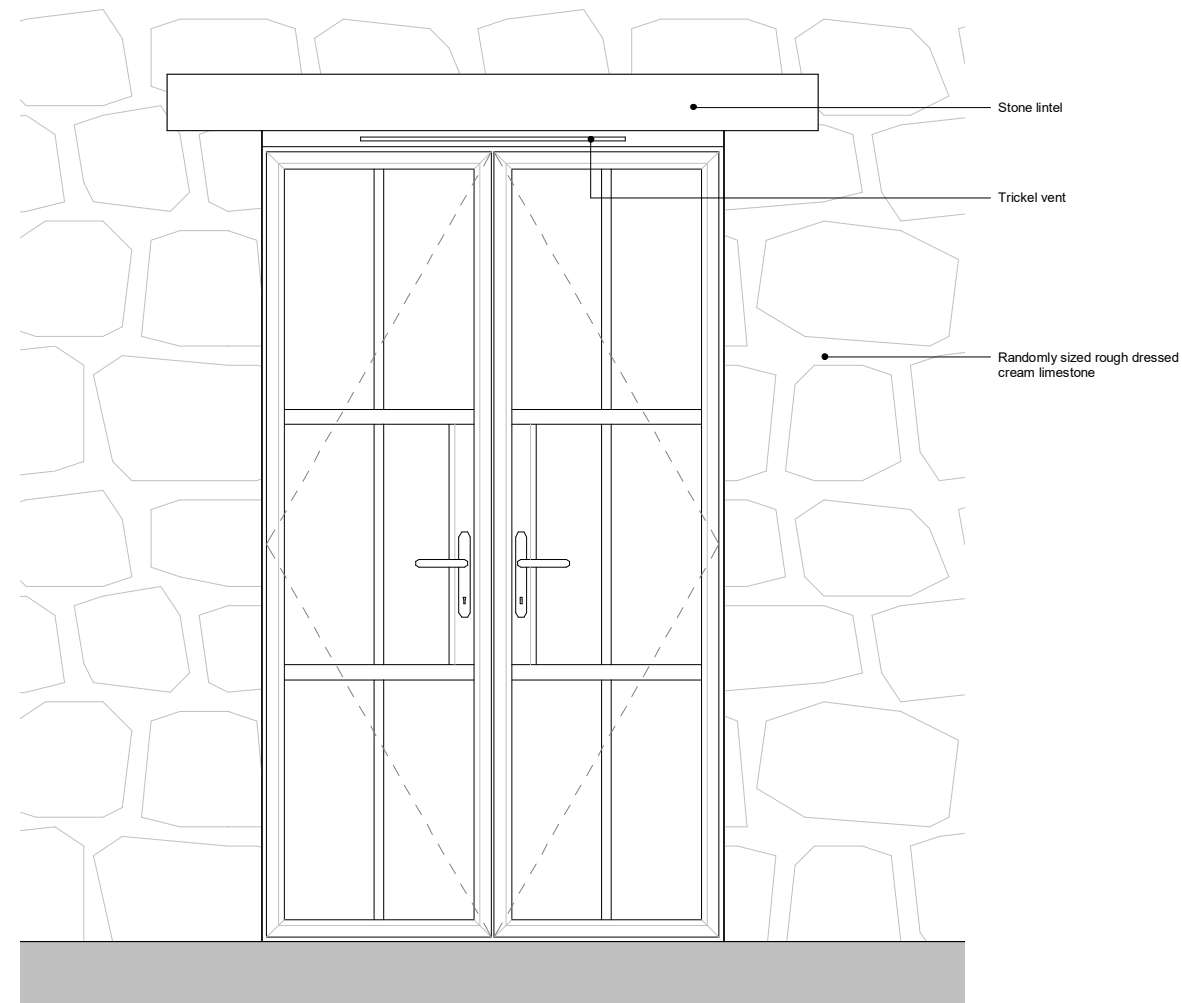
info@squireandpartners.com
www.squireandpartners.com

Project
Wincote
Steeple Aston

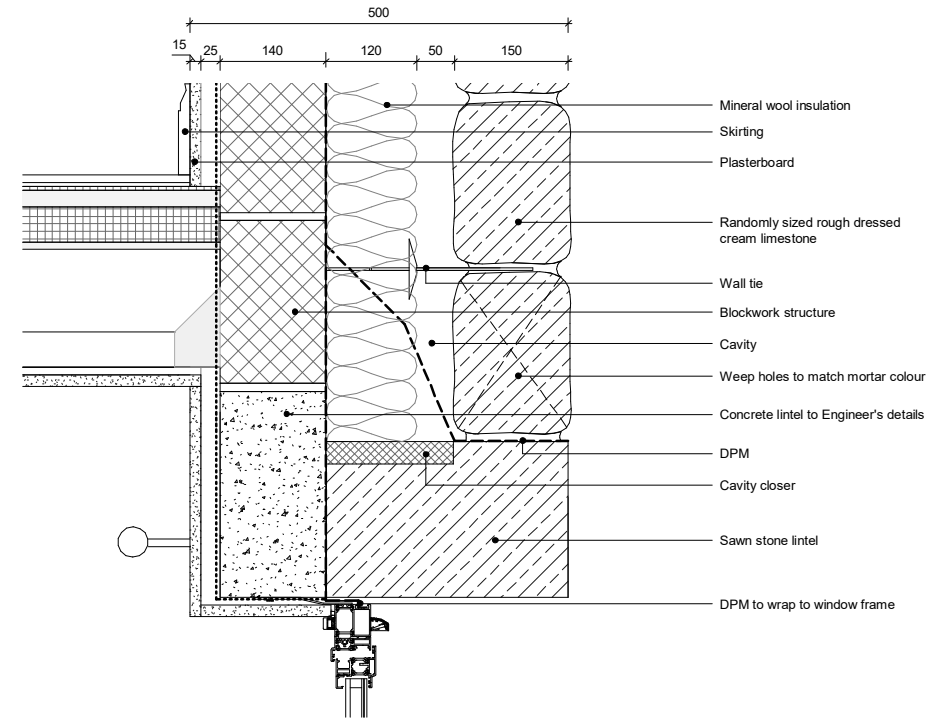
Title
External Walls
Opening Type A
Segmental Arch

Status
For Information

Drawn	Date	Scale @ ISO A1	Job Number
DOL	24/08/21	As indicated	20064
Drawing Number			Revision
20064-SQP-ZZ-ZZ-DR-A-21001			P3



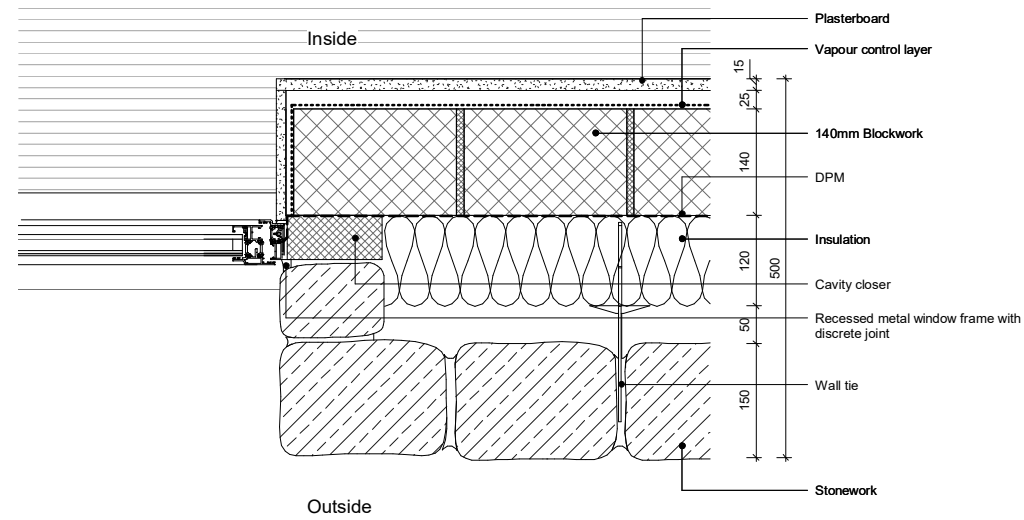
1 Indicative Elevation
1:10



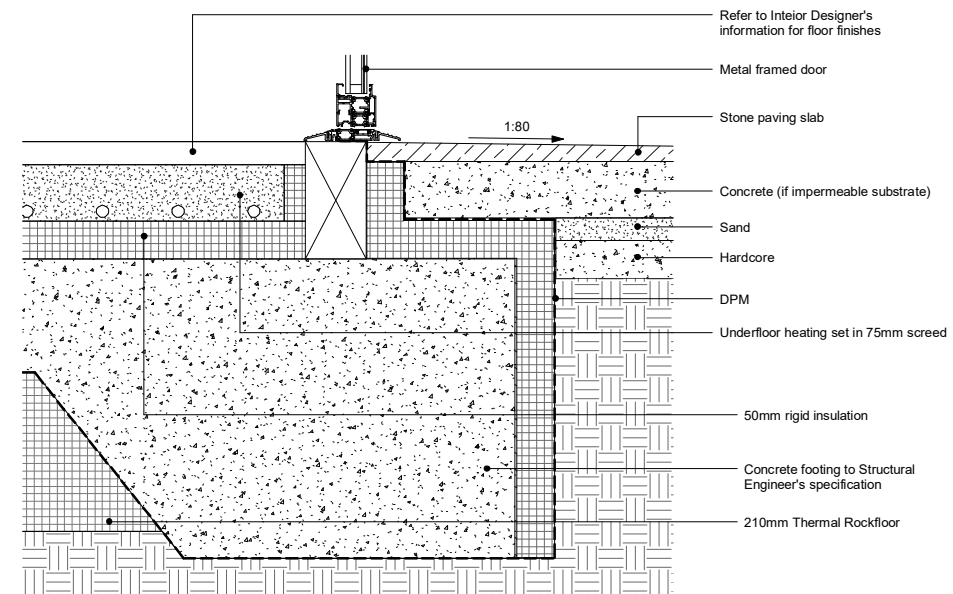
Do not scale from this drawing. All dimensions to be checked on site. All omissions and discrepancies to be reported to the Architect immediately

This work is copyright and shall not be reproduced or used for any other purpose without the written permission of Squire and Partners.

Notes:
Drawings to be read in conjunction with Engineer's information.
Refer to Interior Designer's information for Sanitary and Finishes schedule.
Refer to Interior Designer's information pack for Bathroom, Pantry and Kitchen drawings.



2 Jamb Detail
1:5



3 Head / Base Detail
1:5

Description	Date	Chk	Rev
For Information	09/10/22		P3
For Information	06/09/22		P2
For Tender	22/04/22		P1

SQUIRE & PARTNERS

Squire and Partners LLP
The Department Store
248 Fendrite Road, London SW9 8FR
T: 020 7278 5555

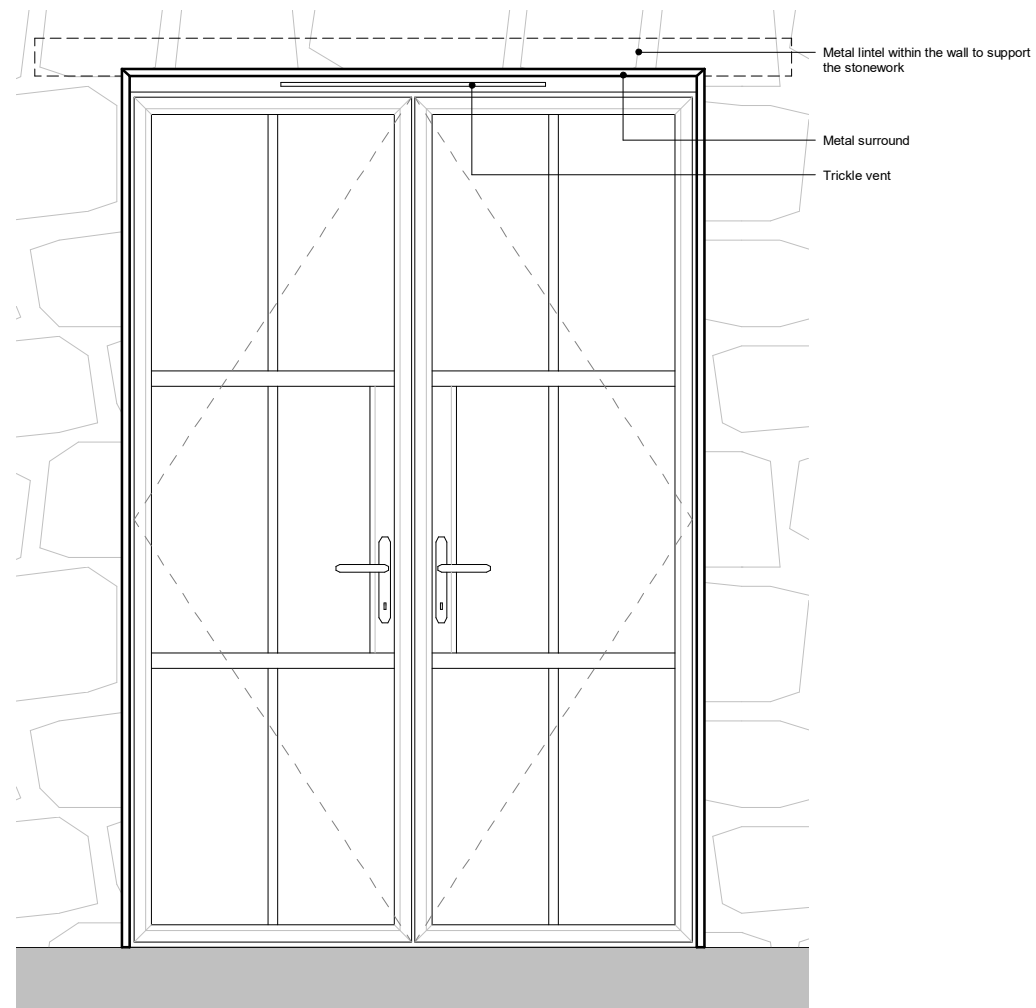
info@squireandpartners.com
www.squireandpartners.com

Project
Wincote
Steeple Aston

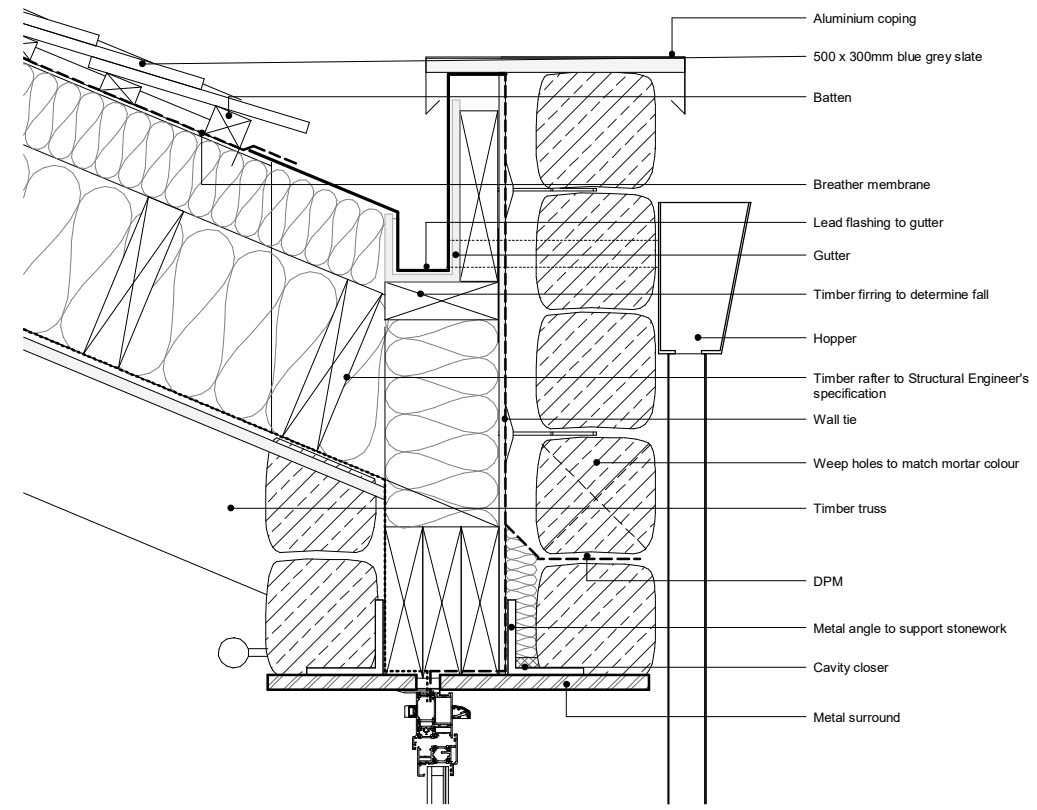
Title
External Walls
Opening Type B
Stone Lintel

Status
For Information

Drawn	Date	Scale @ ISO A1	Job Number
DOL	24/08/21	As indicated	20064
Drawing Number	Revision		
20064-SQP-ZZ-ZZ-DR-A-21002	P3		



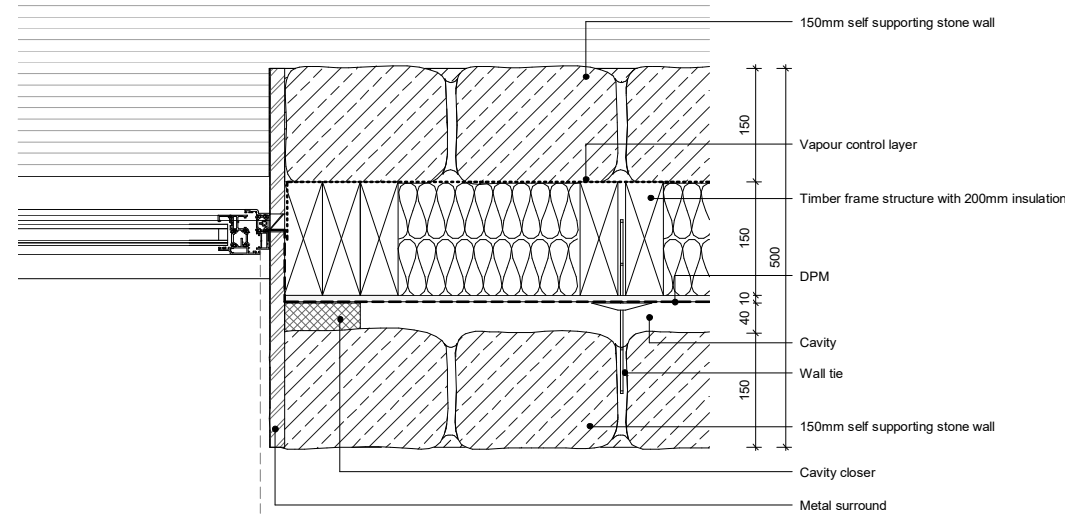
1 Indicative Elevation
1 : 10



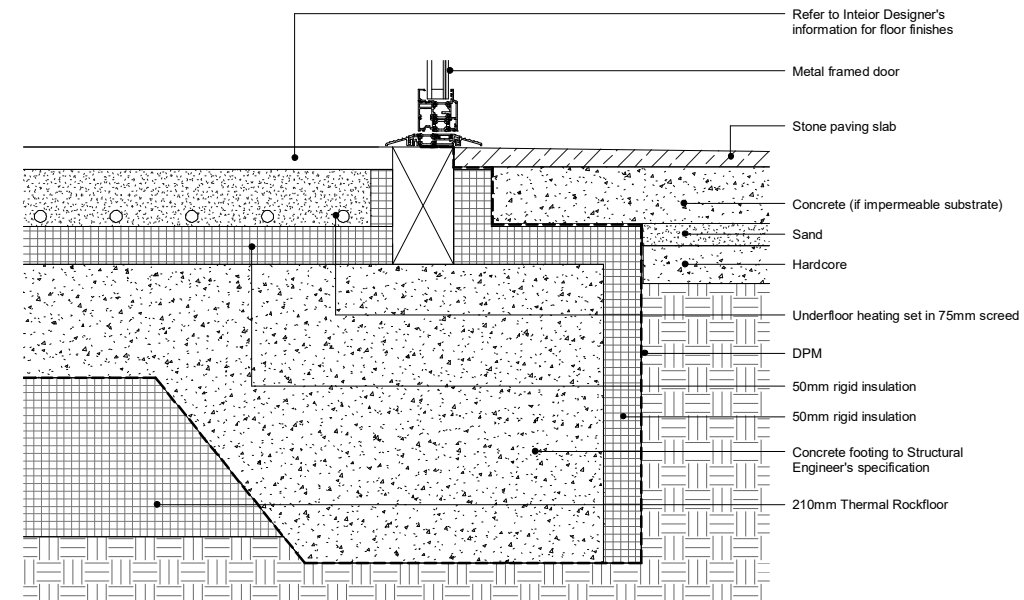
Do not scale from this drawing. All dimensions to be checked on site. All omissions and discrepancies to be reported to the Architect immediately

This work is copyright and shall not be reproduced or used for any other purpose without the written permission of Squire and Partners.

Notes:
Drawings to be read in conjunction with Engineer's information.
Refer to Interior Designer's information for Sanitary and Finishes schedule.
Refer to Interior Designer's information pack for Bathroom, Pantry and Kitchen drawings.



3 Jamb Detail
1 : 5



2 Head / Base Detail
1 : 5

For Information	09/10/22	P3
For Information	06/09/22	P2
For Tender	22/04/22	P1
Description	Date	Chk Rev

SQUIRE & PARTNERS

Squire and Partners LLP
The Department Store
248 Fendale Road, London SW9 8FR
T: 020 7278 5555
info@squireandpartners.com
www.squireandpartners.com

Project
Wincote
Steeple Aston

Title
External Walls
Opening Type C
Metal Lintel

Status			
For Information			
Drawn	Date	Scale @ ISO A1	Job Number
DOL	24/08/21	As indicated	20064
Drawing Number			Revision
20064-SQP-ZZ-ZZ-DR-A-21003			P3

SQUIRE & PARTNERS

The Department Store

248 Ferndale Road, London SW9 8FR

020 7278 5555 info@squireandpartners.com

www.squireandpartners.com