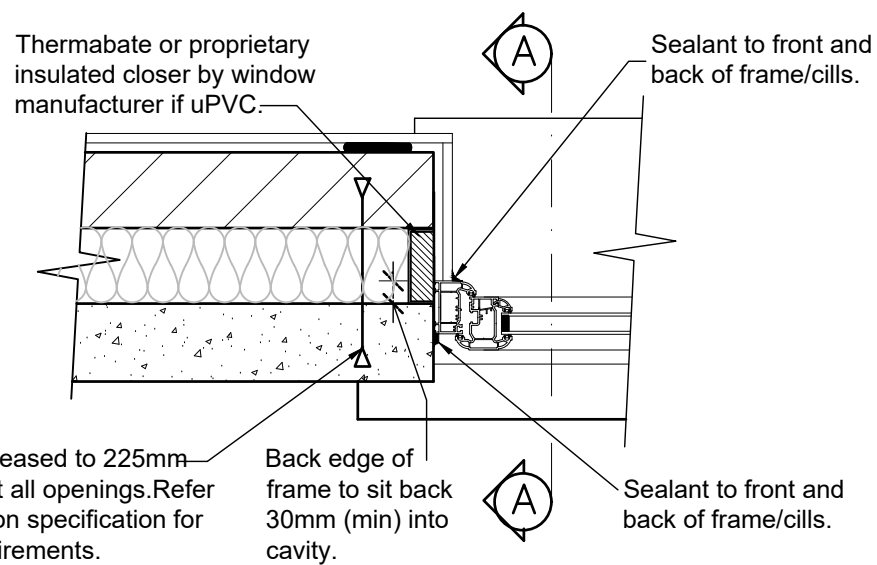


Inner leaf Blockwork reinforcement shown - extend 600mm past opening either side.

Note: Max 1500mm Dry Cast Stone length. For Heads exceeding this ensure that the mortar colour matches the stone work.

Elevation
(scale 1:20)



Wall ties increased to 225mm vertical c/c at all openings. Refer to construction specification for specific requirements.

Back edge of frame to sit back 30mm (min) into cavity.

Plan
(scale 1:10)

ALL STONEMWORK ELEMENTS MUST BE PROTECTED DURING THE CONSTRUCTION PHASE

Cavity trays must have a minimum upstand of 140mm and stop ends. Tray to extend a min. 150mm past lintel.

150x25mm s.w. timber window head to be fixed back to blockwork slip

Sealant to front and back of frame

Lintel to allow for chamfer on stone head.

Openings to be sealed in accordance with Robust Details and the Accredited Construction Details

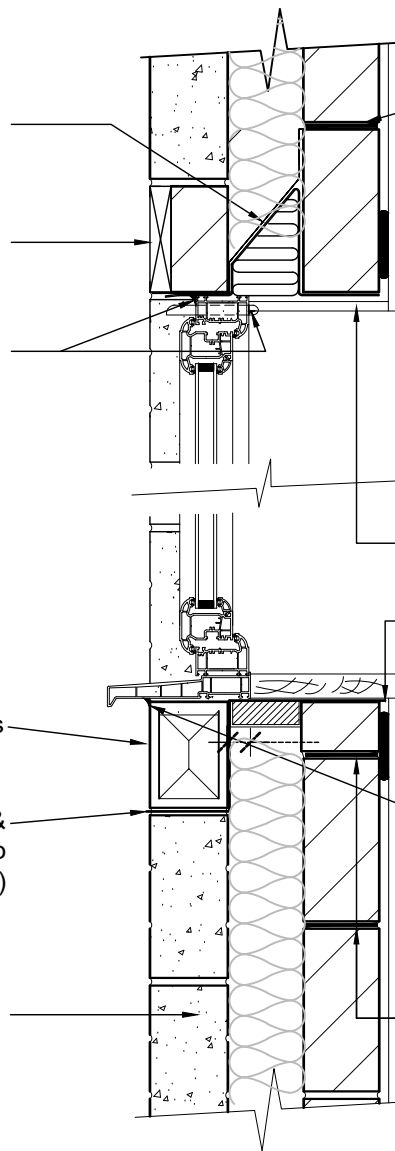
Back edge of frame to sit back 30mm (min) into cavity.

Row of 140mm brick cut soldier courses to window cill. Bricks to be flush with surrounding stonework

DPC to be incorporated to underside & rear of cill as indicated (5mm projection to U/S)

External Cavity wall construction as per section within the Standard Construction Specification.

Section A-A
(scale 1:10)



Cavity trays should be provided at all interruptions to the cavity unless otherwise protected eg by overhanging eaves.

To be installed in accordance with the NHBC specification, section 6.1; External Masonry Walls.

Masonry Joint reinforcement in cs above head as specified by Engineers -minimum in 2 course above - extend 600mm past opening.

Continuous ribbon of adhesive to top and bottom of wall, around all openings and at internal/external corners. Over openings, at least two weep holes spaced at a maximum of 450mm to be incorporated.

Lintel to Engineers recommendations

DPM to be extended over the cavity closer on to the top of the inner leaf blockwork at window board level.

Sealant to front and back of frame/cills

Masonry Joint reinforcement in cs below cills as specified by Engineers -minimum in 2 course above - extend 600mm past opening.

Notes

All dimensions to be checked on site prior to the commencement of construction and any discrepancy should be reported to the Site Manager.

This drawing may not be reproduced in any part or form without written consent.

All copyrights reserved.

Sub-Contractors MUST ensure that they have the latest issue drawing before they commence work on site.

Rev	Date	Description	Init.
A	28/09/22	Updated to planning comments.	GH



Job title
**Fwecott Road,
Fritwell**

Drawing title
**Timber Head & Brick Detail
In Stone**

Scale 1:10/1:20 @ A3	Drawn GH
Dwg No. 00217-206-FRITWELL	Date Sept 2022
	Rev. A