

Wincote

Landscaping (Condition 07)

For Cherwell District Council

September 2022

Document History

Rev	Date	Purpose of Issue	Author	Reviewer
-	220926	Planning Condition	DO	HS

Contents

1.0 Introduction

2.0 Tree Replacement Strategy

2.1 Approved tree removals

(Extracted plan from 10897_AIA.001)

2.2 Proposed tree replacement & landscaping

3.0 Planting proposals

1.0 Introduction

This document has been produced for formal submission of Condition 07 of the consented demolition and construction of the dwellinghouse at Wincote, Steeple Aston. Ref: 22/01444/F.

This document provides drawings of the proposed landscaping and tree replacement strategy along with images of planting proposals.



CGI of the proposed herb garden look and feel

2.0 Tree Replacement Strategy

The landscaping proposal seeks to provide a net gain of planting and make good the entrance area where trees have been removed for the construction works, as per the approved AIA (10897_AIA.001).

A more generous site entrance will be formed to meet the access requirements of the fire brigade and provide a more suitable turning circle for vehicles entering and leaving the property.

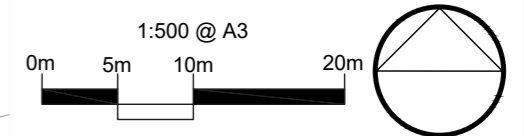
4.1.2 Tree removals are required to accommodate the proposals and are detailed within Table 1 below.

4.1.3 **Table 1: Net Tree Removals by BS5837 Category.**

Category A	Category B	Category C
None	None	T12 Apple
		T13 & T14 Hawthorn
		T15 Hazel
		T24 Weeping Birch
		T25 Elder
		T26 Ash
		G2+ (12m section)
		G5Δ+
		H1 (1.5m and 3m sections)
		Hawthorn

+ Denotes mixed species assemblage of three or more species – refer to Appendix B
 Δ Denotes partial clearance

Extract from the approved AIA (10897_AIA.001)



- KEY:**
- Site Boundary
 - Tree Numbers
 - Tree Canopies
 - Category 'U' Trees
 - Category 'A' RPA
 - Category 'B' RPA
 - Category 'C' RPA
 - Trees to be Removed
 - Tree Protection Barrier
 - Tree Protection Barrier (Secondary Specification)
 - Aluminium Trackway

Note: Trees 8, 12-15, 29-32 and Groups G1-G4 and G6-G11 have been plotted using measurements onsite in conjunction with aerial imagery. Their locations were not recorded on the topographical survey of the site.

Note: The RPA footprint for Trees 5, 6, 12-16 and Group G1 have been displaced to allow for the effect of the adopted highway and existing building foundations. The surface area of the RPA has not been reduced.



Cited from Google Earth

REV	DATE	NOTE	Drawn	Chk'd
REVISIONS				

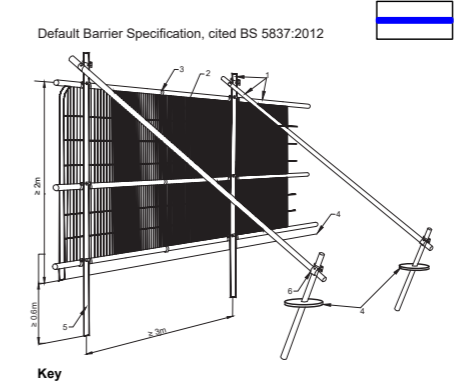
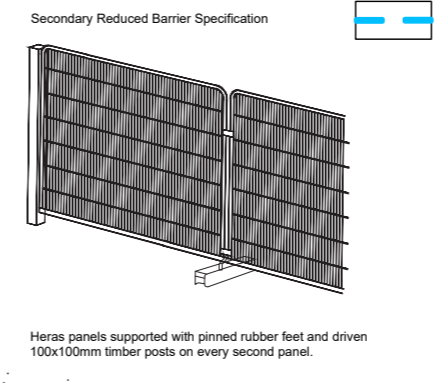
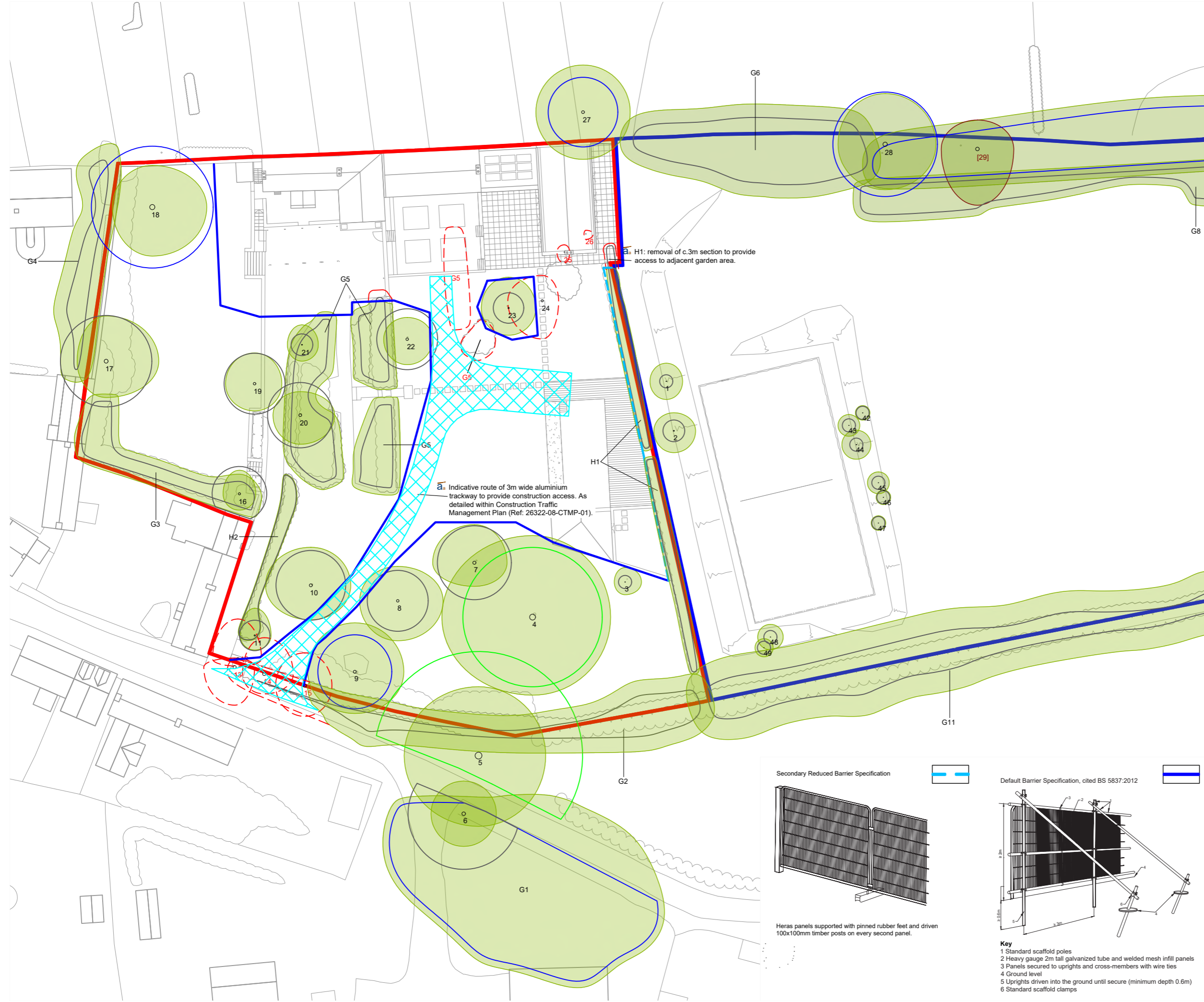


TITLE
**Wincote, Cow Lane, Steple Aston
 Tree Protection Plan**

CLIENT
Squire and Partners LLP

SCALE	DATE	DRAWN
1:500 @ A3	JUN 2021	GW
DRAWING NUMBER	REVISION	
10897 TPP 01 Rev A		

Based on: 20064-SQP-ZZ-ZZ-DR-A-PL121



- Key**
- 1 Standard scaffold poles
 - 2 Heavy gauge 2m tall galvanized tube and welded mesh infill panels
 - 3 Panels secured to uprights and cross-members with wire ties
 - 4 Ground level
 - 5 Uprights driven into the ground until secure (minimum depth 0.6m)
 - 6 Standard scaffold clamps

Do not scale from this drawing. All dimensions to be checked on site. All omissions and discrepancies to be reported to the Architect immediately

This work is copyright and shall not be reproduced or used for any other purpose without the written permission of Squire and Partners.

--- Site Boundary

New Trees Key:

- 1 = Cotoneaster 'Cornubia'
- 2 = Corylus colurna
- 3 = Carpinus 'Frans Fontaine'
- 4 = Acer rubrum 'October Glory'
- 5 = Magnolia grandiflora (feathered, 3 / 3.5m)
- 6 = Wisteria sinensis
- 7 = Rosmarinus officinalis 'Miss Jessop's Upright'
- 8 = Lollipop Bay Trees (Laurus nobilis) 1.2m stem

Notes:

- All trees to be rootball or 35 litre pot (depending on the season) and 12/14cmg.

- This plan should be read in conjunction with the approved 10897_AIA.001 Rev A

For Information	26/09/22	P1
Description	Date	Chk Rev

SQUIRE & PARTNERS

Squire and Partners LLP
The Department Store
248 Ferndale Road, London SW9 8FR
T: 020 7278 5555

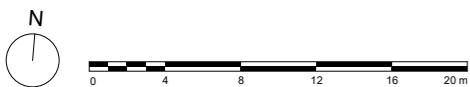
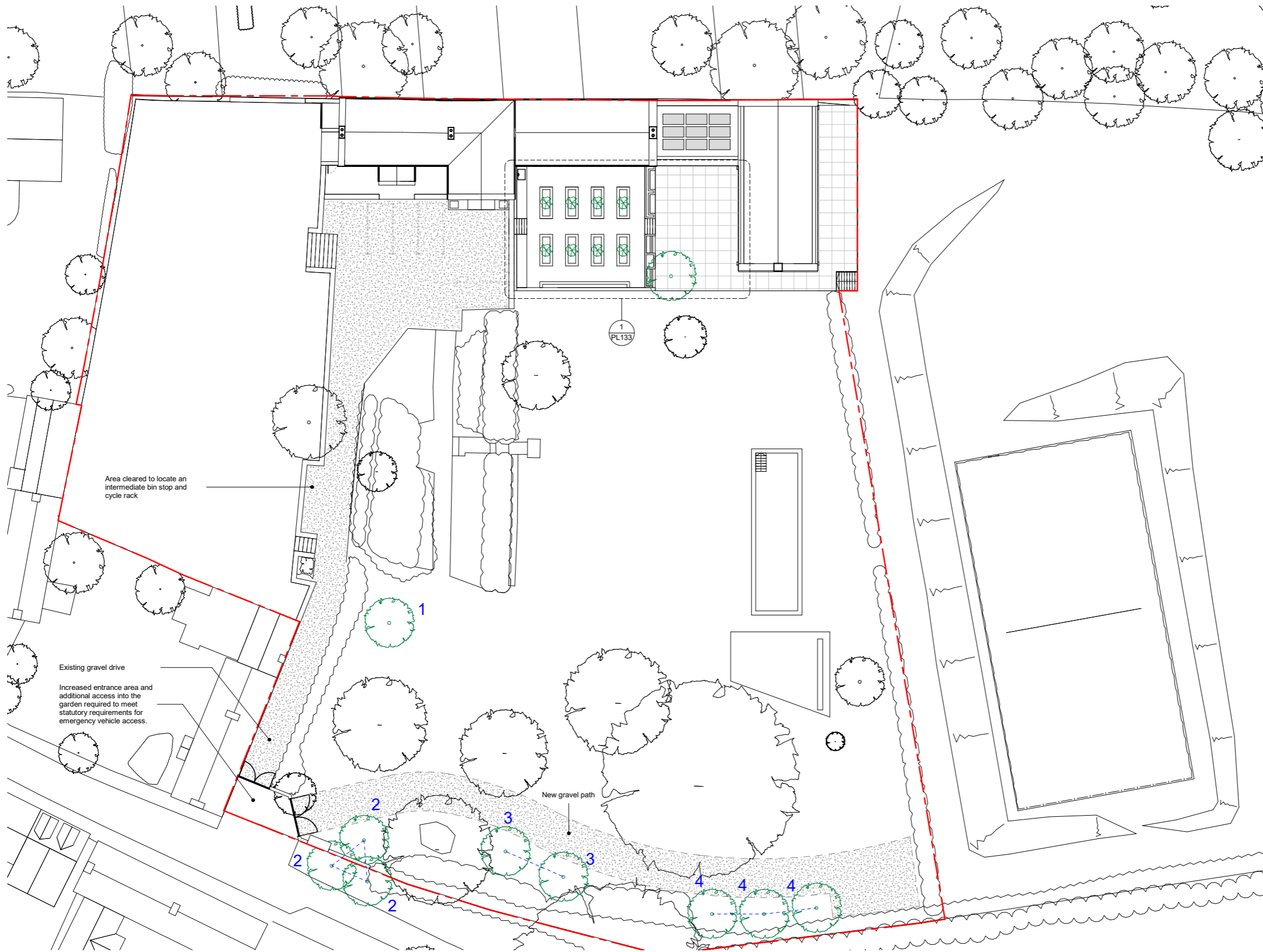
info@squireandpartners.com
www.squireandpartners.com

Project
Wincote
Steeple Aston

Title
Planning
Proposed
Site Plan

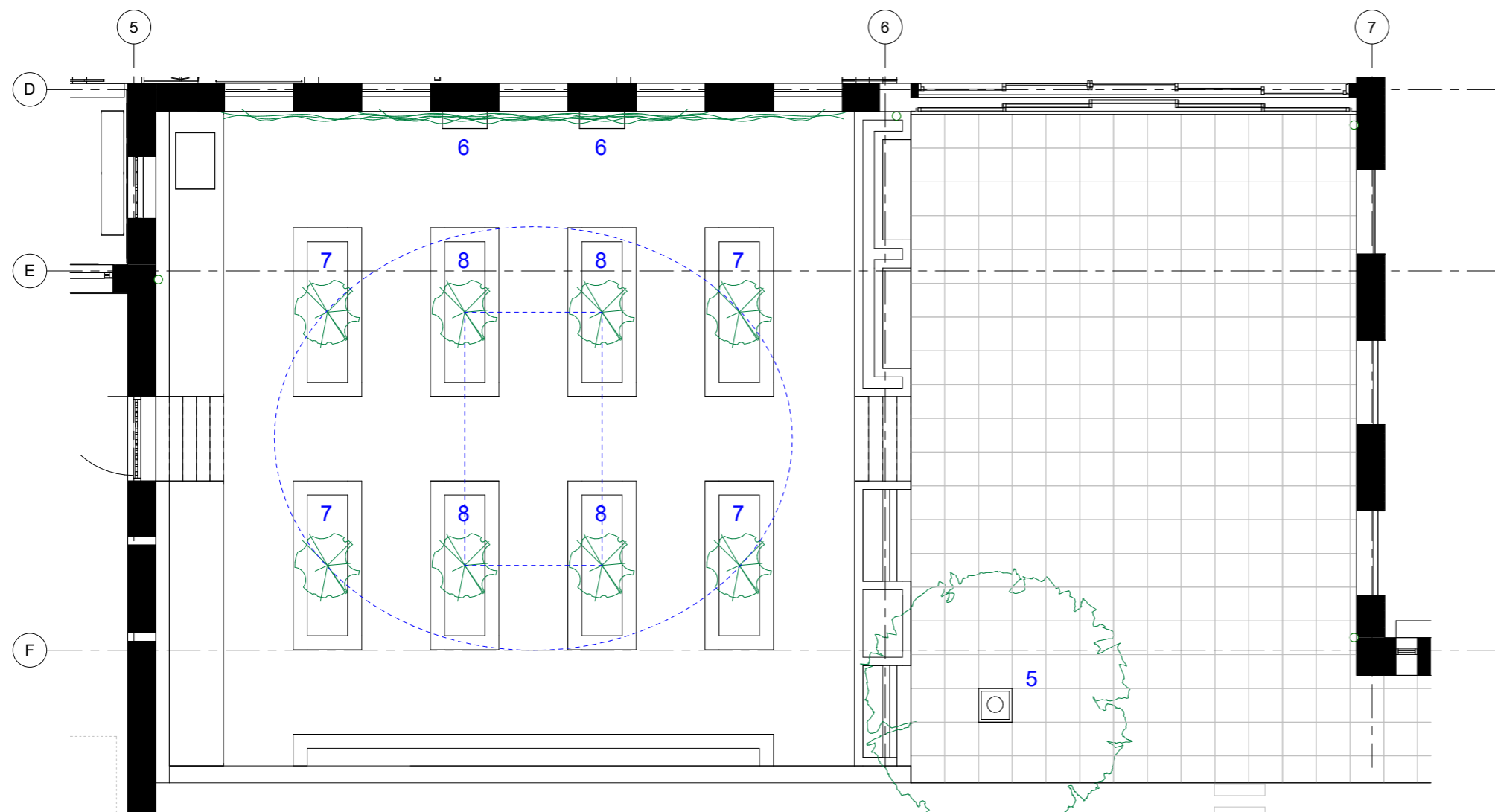
Status
For Information

Drawn	Date	Scale @ ISO A1	Job Number
DOL	14/09/22	1:200	20064
Drawing Number			Revision
20064-SQP-ZZ-RF-DR-A-PL132			P1



Do not scale from this drawing. All dimensions to be checked on site. All omissions and discrepancies to be reported to the Architect immediately

This work is copyright and shall not be reproduced or used for any other purpose without the written permission of Squire and Partners.



New Trees Key:

- 1 = Cotoneaster 'Cornubia'
- 2 = Corylus colurna
- 3 = Carpinus 'Frans Fontaine'
- 4 = Acer rubrum 'October Glory'
- 5 = Magnolia grandiflora (feathered, 3 / 3.5m)
- 6 = Wisteria sinensis
- 7 = Rosmarinus officinalis 'Miss Jessop's Upright'
- 8 = Lollipop Bay Trees (Laurus nobilis) 1.2m stem

Notes:

- All trees to be rootball or 35 litre pot (depending on the season) and 12/14cmg.
- This plan should be read in conjunction with the approved 10897_AIA.001 Rev A

Herbs for 8 raised beds to include:

- Mentha Spicata
- Thymus Vulgaris
- Allium Schoenoprasum
- Salvia Officinalis 'Purpurascens'
- Origanum Vulgare
- Petroselinum Crispum

For Information	28/09/22	P1
Description	Date	Chk Rev

SQUIRE & PARTNERS

Squire and Partners LLP
The Department Store
248 Finsdale Road, London SW9 8FR
T: 020 7278 5555

info@squireandpartners.com
www.squireandpartners.com

Project

Wincote
Steeple Aston

Title

General Arrangement
Proposed
Herb Garden & Patio

Status

For Information

Drawn	Date	Scale @ ISO A1	Job Number
DOL	14/09/22	1:50	20064
Drawing Number			Revision
20064-SQP-ZZ-ZZ-DR-A-PL133			P1





Corylus colurna, Carpinus 'Frans Fontaine', Crataegus monogyna, Acer rubrum 'October Glory', Betula utilis, Cotoneaster 'Cornubia'

Informal Garden—Tree Planting

Wincote



Magnolia grandiflora

Feature tree for new patio area

Wincote



Wisteria sinensis

Climber for the house wall

Wincote



Laurus nobilis lollipop, Mentha spicata, Thymus vulgaris, Allium schoenoprasum, Rosmarinus 'Miss Jessopp's Upright'
Salvia officinalis 'Purpurascens', Origanum vulgare, Petroselinum crispum

Herb Garden

Wincote

SQUIRE & PARTNERS

The Department Store

248 Ferndale Road, London SW9 8FR

020 7278 5555 info@squireandpartners.com

www.squireandpartners.com