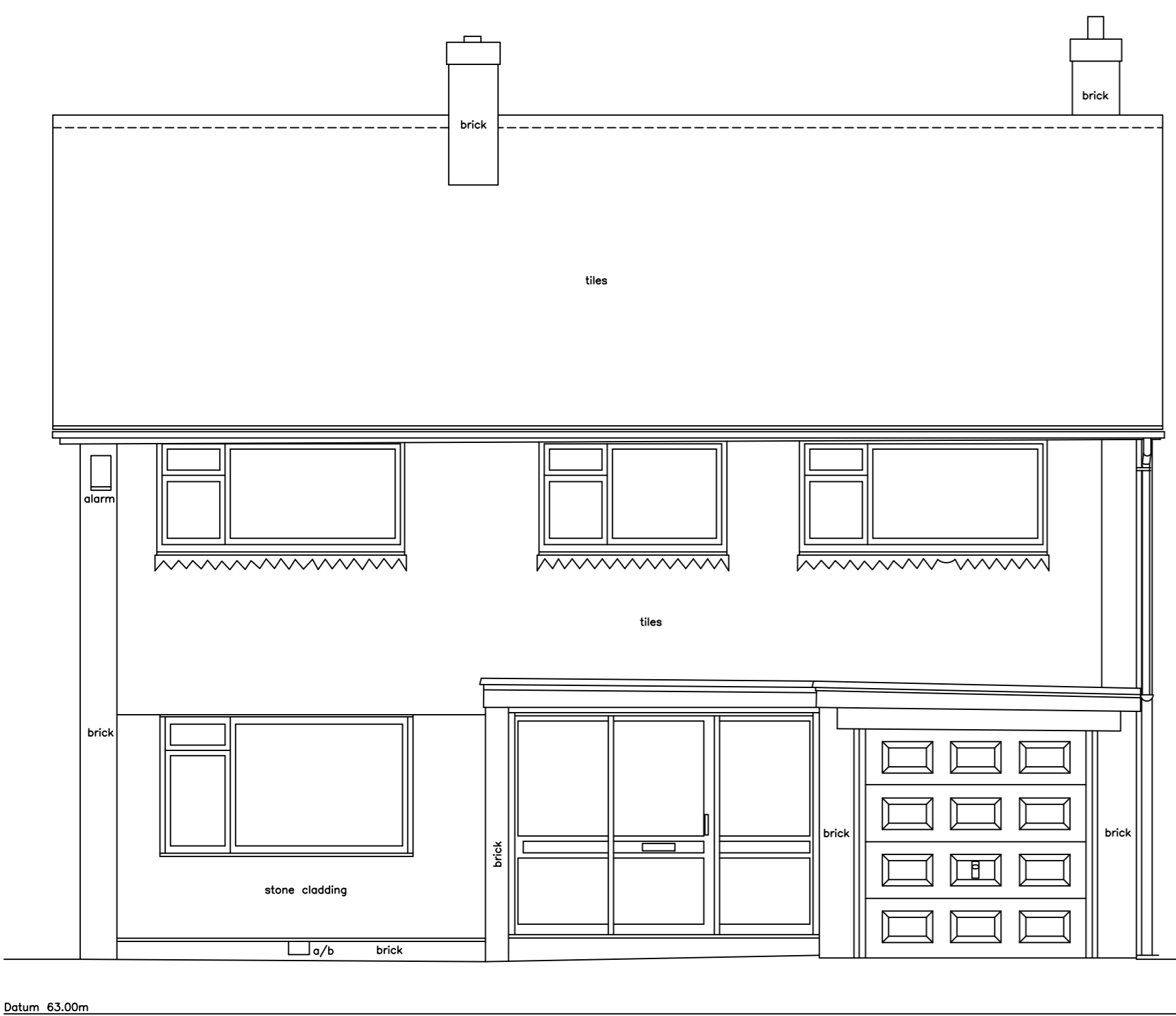


**NOTES**

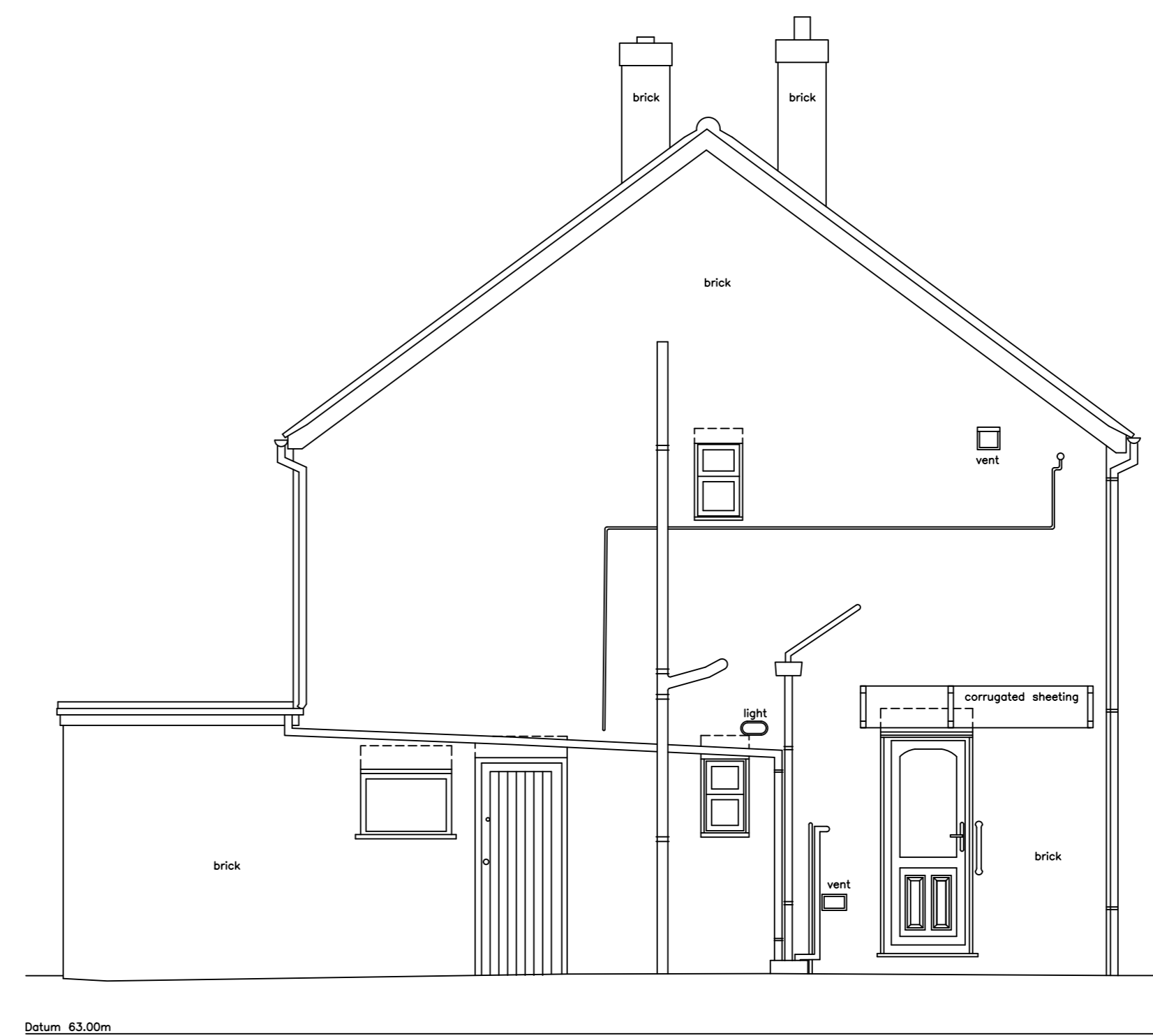
GENERAL NOTES :-  
 ALL LEVELS ARE IN METRES DERIVED FROM GPS TRANSFORMATION.  
 THIS DRAWING HAS BEEN PRODUCED WITH A PLOT SCALE ACCURACY OF 1:50

- BUILDING SURVEY KEY :-
- |                           |                                   |
|---------------------------|-----------------------------------|
| 1.23 - room height        | hw - hot water tank               |
| 1/s - floor boards        | ic - inspection cover             |
| s - pipe diameter         | i - invert level                  |
| a/b - air brick           | mb - manhole cover                |
| ab - alarm box            | OSBM - Ordnance Survey bench mark |
| ah - arch head height     | q/tiles - quarry tiles            |
| ba - back drop            | rd - radiator                     |
| conc - concrete           | rl - roof light                   |
| cr - cable riser          | rwp - rain water pipe             |
| cb - fuse box             | sf - soil filled chamber          |
| dh - door height          | sh - floor to sill height         |
| dp - depth                | sp - soil pipe                    |
| e/mtr - electricity metre | su.c - suspended ceiling          |
| elec - electricity        | svp - soil vent pipe              |
| f/p - fire place          | trai - heated towel rail          |
| fh - floor to head height | TBM - temporary bench mark        |
| fl - floor level          | tl - threshold level              |
| fs - floor to sill height | top - top of cap                  |
| g/mtr - gas metre         | top - top of pipe                 |
| gr - gas riser            | top - top of tank                 |
| hd - hand dryer           | u/s - underside height            |
| htr - heater              | UTL - unable to lift              |
|                           | vp - vent pipe                    |
|                           | wf - water fountain               |
|                           | wfc - water filled chamber        |
|                           | wp - waste pipe                   |

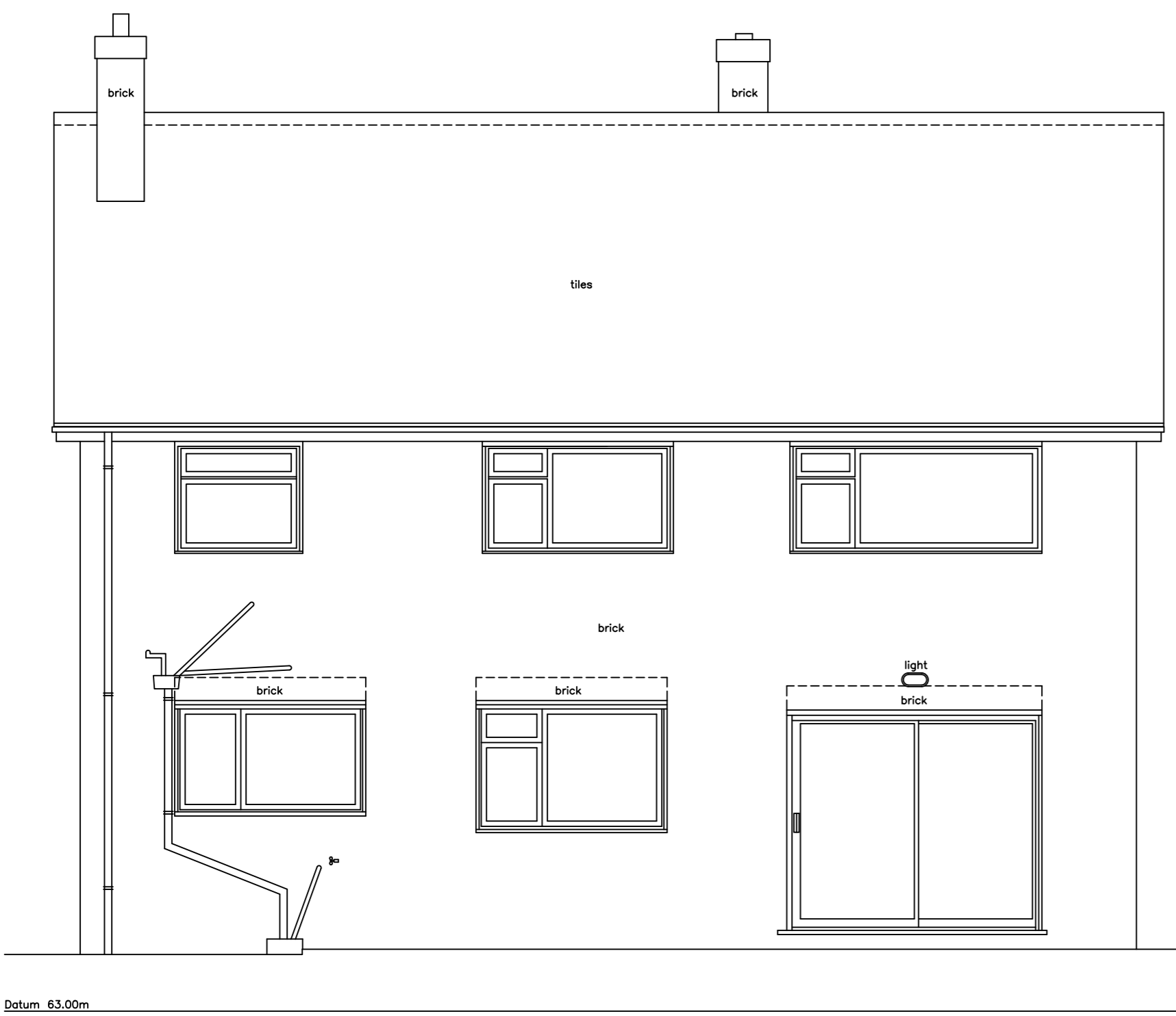
- SERVICES KEY :-
- |                                |                          |
|--------------------------------|--------------------------|
| strip light                    | alarm keypad             |
| light                          | AK                       |
| wall light                     | IN                       |
| emergency light                | ACP                      |
| spot light                     | alarm control panel      |
| pull cord                      | SPK                      |
| vent/extractor                 | PRJ                      |
| switch                         | projector                |
| light switch                   | CCTV                     |
| fused switch                   | closed circuit tv        |
| isolator switch                | sensor                   |
| cooker switch                  | network point            |
| fuse                           | NC                       |
| blank socket                   | TV                       |
| single socket                  | coolid aerial            |
| double socket                  | heat detector            |
| ceiling socket/fuse/switch     | fire alarm siren         |
| thermostat                     | fire breakglass          |
| cord access point (swipe card) | fire sprinkler           |
| emergency door release         | fire blanket             |
|                                | water fire extinguisher  |
|                                | co2 fire extinguisher    |
|                                | powder fire extinguisher |
|                                | fire extinguisher        |
|                                | fire alarm control panel |



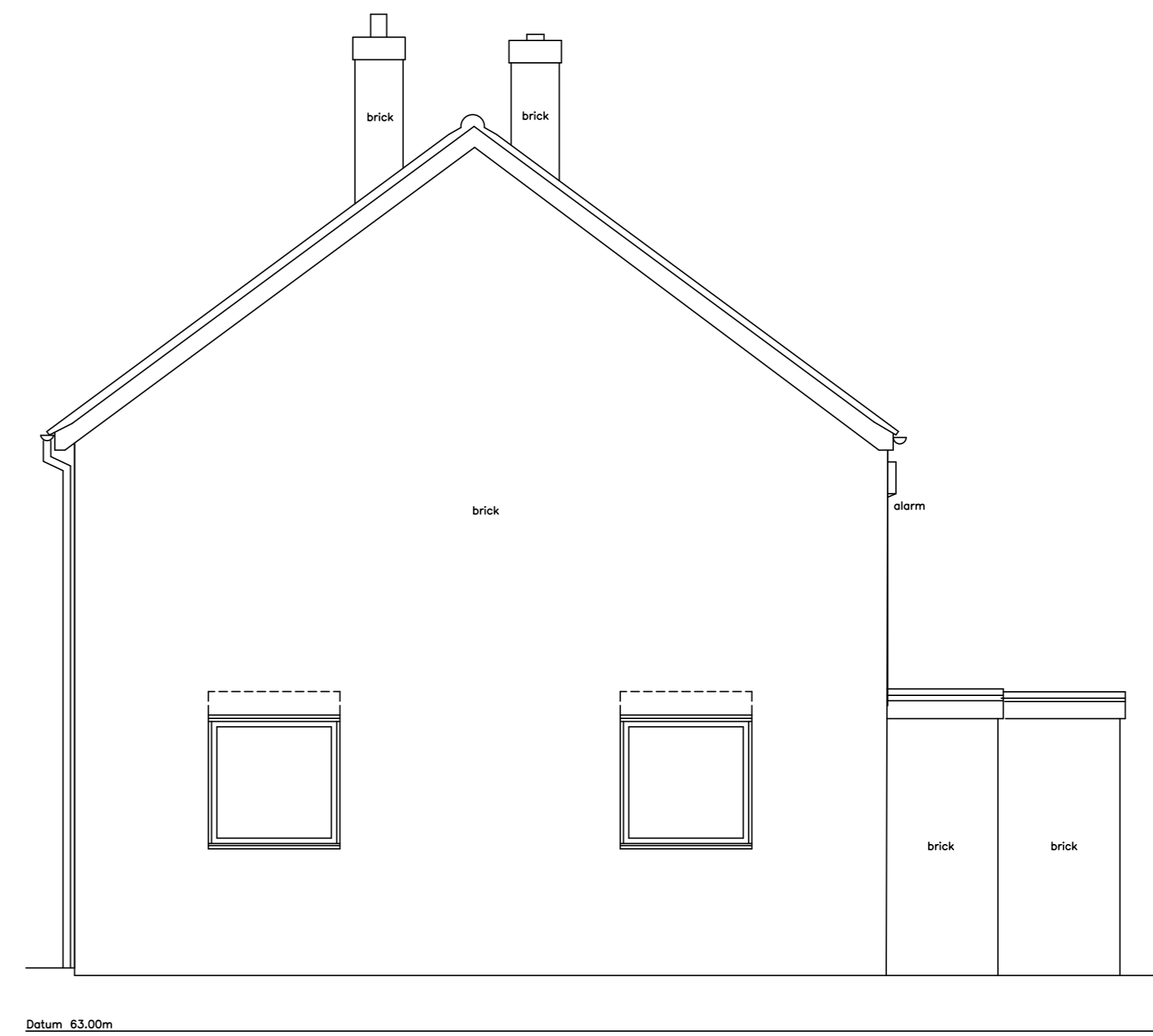
SOUTH EAST ELEVATION



NORTH EAST ELEVATION



NORTH WEST ELEVATION



SOUTH WEST ELEVATION



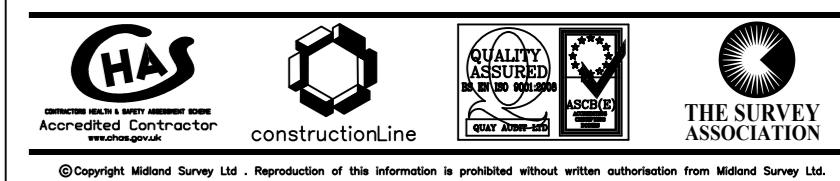
**MIDLAND SURVEY LTD**

HEAD OFFICE  
 Cromwell House, Westfield Road, Southam, Warwickshire, CV47 0JH.  
 Tel: 01926 810811 Fax 01926 810812  
 E-Mail: mail@midlandsurvey.co.uk  
 www.midlandsurvey.co.uk

Client ANDERSON ORR ARCHITECTS  
 Project 12 RECTORY CLOSE, WENDLEBURY, BICESTER, OX 25 2PJ

Title	ELEVATIONS
Date	JUNE 2022
Scale	1:50@A1
Dwg No	41690/3
Surveyor	J.Y
Checked	M.F

TOPOGRAPHICAL (LAND) SURVEYORS / UTILITY SURVEYORS  
 BUILDING MEASUREMENT SURVEYORS / 3D LASER SCANNING



© Copyright Midland Survey Ltd. Reproduction of this information is prohibited without written authorisation from Midland Survey Ltd.