

Copings to be 215mm solid engineering brick-on-edge on solid brick projecting 15mm from the main facing wall.

Bricks to be of approved facings suitable for use in exposed locations.

Wall thickness 215mm.  
Brick pier 440x328mm.  
Structural integrity and movement joint positions (if required) to be confirmed by Structural Engineer.

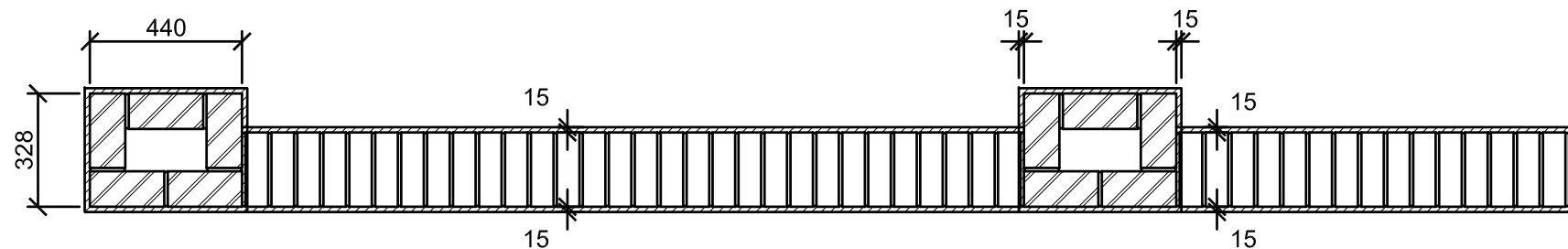
Brickwork to be laid either stretcher bond with ties inserted at 900mm horizontal centres and 450mm vertical centres or English Garden Wall bond.

Movement Joints in clay bricks to be located at max 12000 ctrs and max 6000 from corners. For walls constructed from other materials please consult BRE Good Building Guide No. 14.

Refer to Structural Engineer for details of foundation construction.

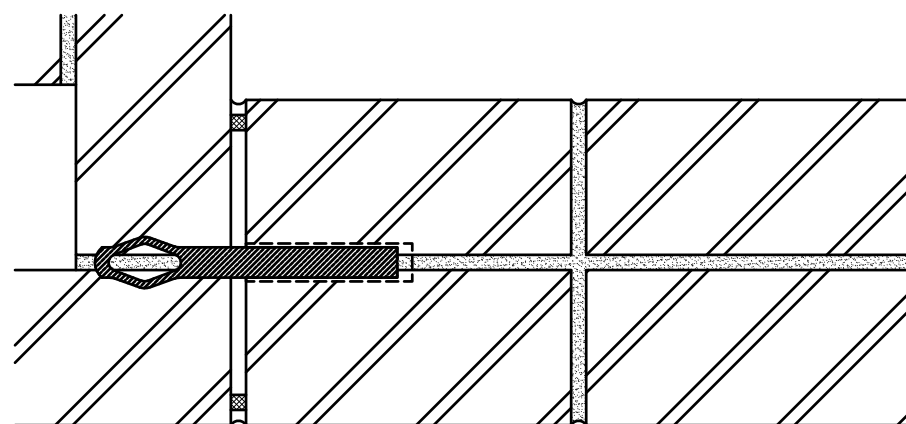
Refer to Site Material Plan for brick type and colour.

ELEVATION - SCREEN WALL DETAIL 1/20



Copings to be 215mm solid engineering brick-on-edge on solid brick projecting 15mm from the main facing wall.

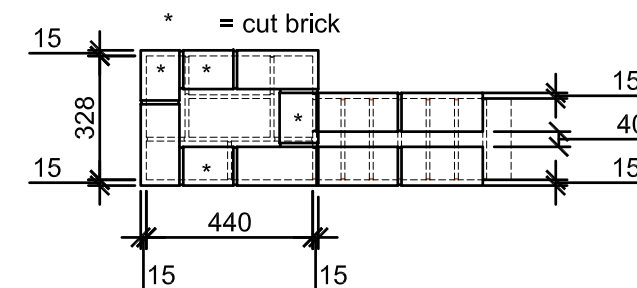
PLAN 1/20



External movement joint filled with cellular polyethylene or foam rubber and sealed with polysulphide sealant to match colour of facing-bricks as closely as possible.

Proprietary stainless-steel debonded ties to be installed at 450mm vert. ctrs across movement joint in external skin.

MOVEMENT JOINT DETAIL-1/5



PLAN 1/20  
(projecting stretcher course)

DAVID WILSON HOMES

BARRATT DEVELOPMENTS PLC

Date: Sept 20

Description: Engineering bricks removed from ground level.

Rev: D

Brand: BARRATT / DAVID WILSON HOMES

Range: 2010 / 2016 & -5 / -7

Title: Boundary Wall - Type 1

Detail No: DB-SD13-004

Drawn: GDT Checked: GDT

Scale: 1:20 / 1:5 Date: July 16

EXTERNAL REFERENCE :