

DARLING ASSOCIATES  
ARCHITECTS

Covered Cycle Store

## PLANNING CONDITION 04

Site 3 - JDE

Ruscote Avenue, Banbury

Planning Permission Nr.: 21/04171/F

September 2022

Revision A





## Condition 04

### Overview

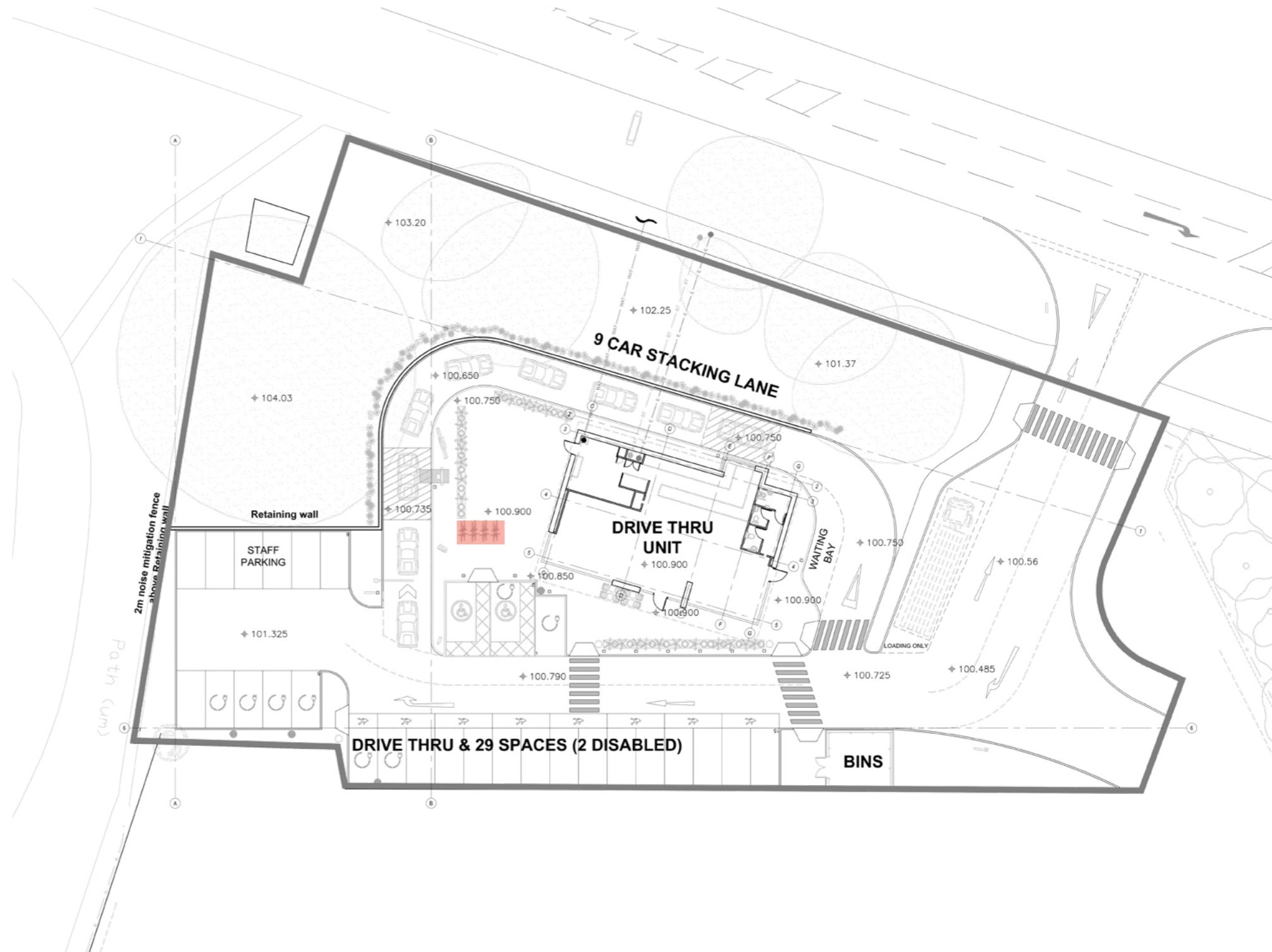
Before the development is first occupied details of covered cycle parking areas, including dimensions and means of enclosure, shall be submitted to and approved in writing by the Local Planning Authority. The approved cycle parking shall be provided prior to the first occupation of the development and thereafter the areas shall be retained solely for the purpose of the parking of cycles.

## Condition 04

### Bike Store Location

4 No. Sheffield stands are located as followed on the adjacent plan these provide parking for 8 bicycles.

The cycle store is to be enclosed by a cycle shelter as detailed overleaf.

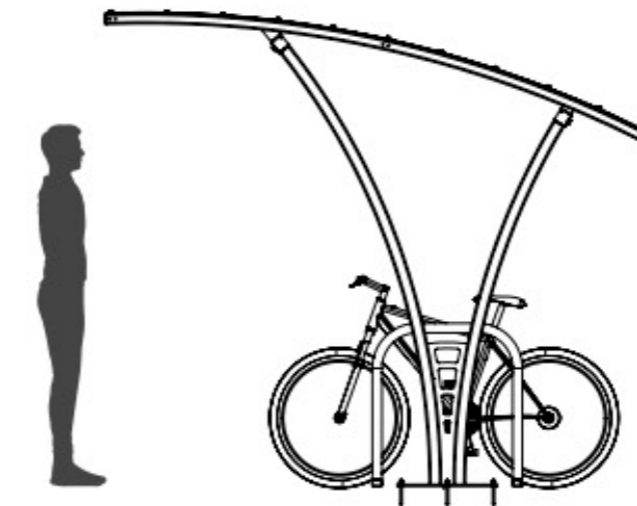
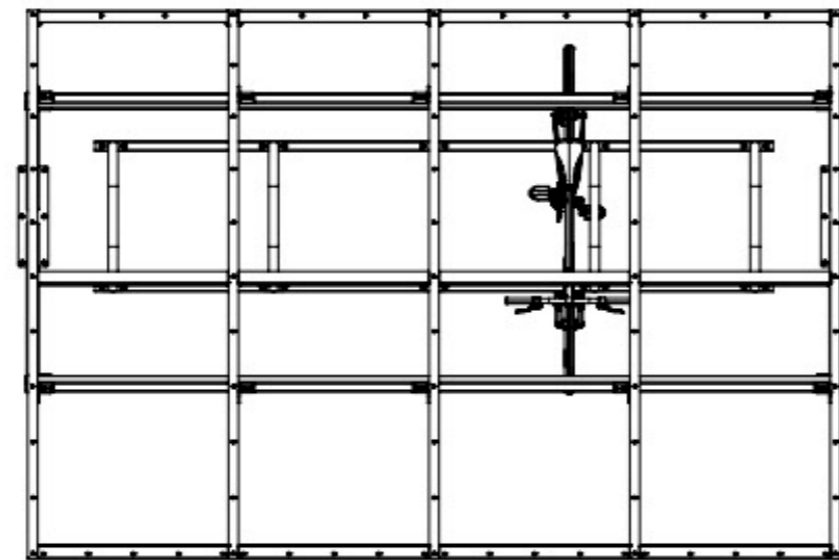
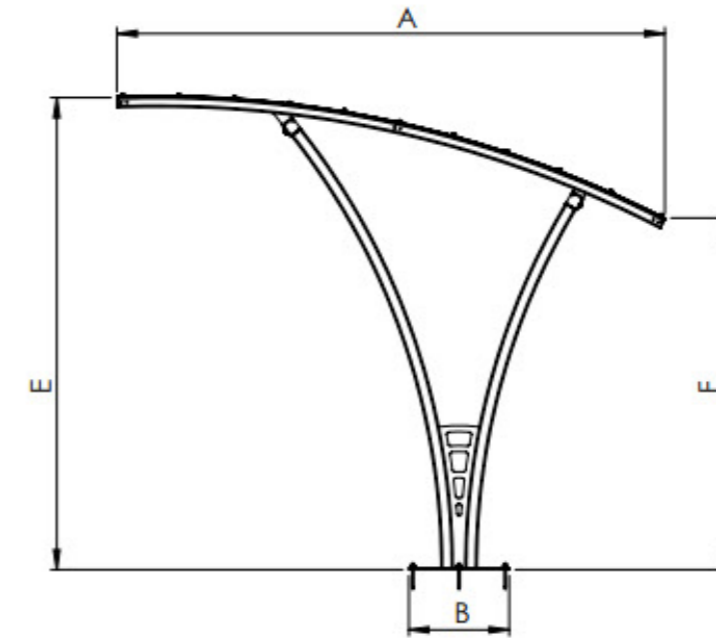
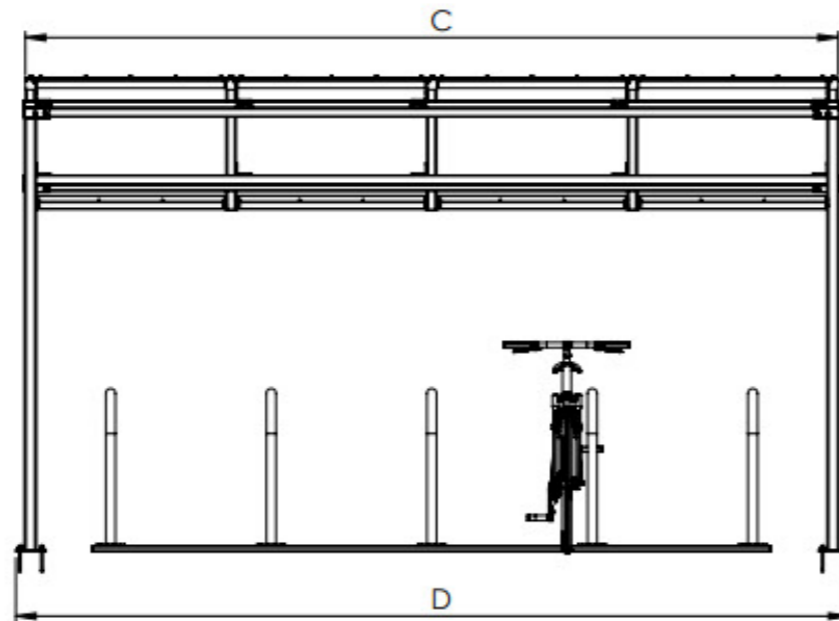


# Condition 04

Bike Store Enclosure

Centaur CS Shelter

(A) Top Depth:	2730mm	(B) Base Depth:	500mm	(C) Top Width:	4010mm	(D) Base Width:	4180mm
(E) Height Front:	2360mm	(F) Height Rear:	1743mm	Storage: 10no Cycles		PLEASE NOTE: Product dimensions given are correct at time of publishing March 2022. All dimensions are in millimetres and capacities in litres and don't form any part of the contract.	



DARLING ASSOCIATES  
ARCHITECTS

**London**  
1 Greencoat Row  
Victoria  
London, UK  
SW1P 1P

**Manchester**  
Cypress House  
3 Grove Ave  
Wilmslow, UK  
SK9 5EG

**Poznan**  
Stary Rynek 61  
61-772  
Poznań  
Poland

**www.darlingassociates.net**  
mail@darlingassociates.net  
+44 (0) 20 7630 0500  
@DAArchitectsUK  
@darlingassociates