

Legend

- Existing trees to be retained and protected during construction. Refer to Tree Protection Plan HAY23648-03 for further details
- Proposed tree planting within soft landscape. See tree pit detail on sheet 1
- Proposed specimen shrub planting
- Proposed climbing plants to be trained up adjacent wall/ fence with galvanised wires and hook set 250mm apart with support canes removed prior to planting
- Proposed hedge planting to be planted in a single row at 400mm centres
- Proposed *Carpinus* (hornbeam) hedge planting to be planted in a double staggered row 300mm apart and at 400mm centres in each row. To be maintained at 1m height
- Proposed mixed native hedge planting to be planted in a double staggered row 300mm apart and at 500mm centres in each row. To be maintained at 1.8m height
- Proposed shrub planting to receive 75mm bark mulch after planting operations
- Proposed aquatic mix to be planted in groups of 7-10no. of each species and as above
- Proposed sensory shrub mix to be planted in groups of 5-7no. of each species and as above
- Proposed native woodland and understorey to be planted in groups of 5-7no. of each species and as above
- Proposed native thicket mix to be planted in groups of 5-7no. of each species and as above
- Proposed decorative mix bulb planting, to be planted in Autumn at three times the depth of the bulb
- Proposed grass areas to receive good quality amenity grass turves laid in line with good horticultural practices
- Proposed grassland areas to be seeded with EG22 Strong Lawn Grass Mixture as supplied by Emorsgate or similar and sown at 25 grams per msq
- Proposed areas to be seeded with EM2 Standard General Purpose Meadow Mixture as supplied by Emorsgate or similar and sown at 4 grams per msq
- Proposed areas to be seeded with EM8 Meadow Mixture for Wetlands as supplied by Emorsgate or similar and sown at 4 grams per msq
- Proposed areas to be seeded with EG10 Tussock Grass Mixture for Wetlands as supplied by Emorsgate or similar and sown at 5 grams per msq
- Proposed areas to be seeded with EH1 Hedgerow Mixture as supplied by Emorsgate or similar and sown at 4 grams per msq
- Proposed grass mat safety surfacing as supplied by Matta products or similar. To be laid to critical fall heights
- Proposed footpaths to be laid with self binding breeder gravel. To be edged with AluExcel aluminium edging, as supplied by Excel Edge or similar and laid in line with engineers details
- Proposed footpath to be laid with resin bound gravel as supplied by SureSet or similar. Laid to engineers detail
- Proposed knee rail to be 450mm high as supplied by Jacksons Fencing or similar. To include maintenance gates
- Proposed root barrier to be ReRoot 2000 as supplied by GreenBlue Urban or similar
- Proposed Willenhall Seat, product ref: BX14 4015 and Westleigh Litter Bin, product ref: BX50S 2800 as supplied by Broxap or similar
- Cut lines
- For Planting Schedule refer to sheet 1 of 3

Planting Schedule

Trees	Species Name	Grith	Height	Density	Specification	No
	<i>Corylus avellana</i>	40-60cm	1.1m	0.3Ctr Double Staggered at 0.3m offset	Transplant BR. Planted and maintained as a hedgerow	41
	<i>Crataegus monogyna</i>	40-60cm	1.1m	1+1 Feather BR	Bushy C	66
	<i>Ilex aquifolium</i>	40-60cm	1.1m	1+1 Feather BR	Bushy C	66
	<i>Crataegus monogyna</i>	80-80cm	0.3Ctr Double Staggered at 0.3m offset	Transplant BR. Planted and maintained as a hedgerow	61	
	<i>Carpinus betulus</i>	100-125cm	0.3Ctr Double Staggered at 0.3m offset	Transplant BR. Planted and maintained as a hedgerow	169	
	<i>Betula pendula</i>	8-10cm	200-300cm	1/m	Light Standard 2x BR	34
	<i>Prunus avium</i>	8-10cm	200-300cm	1/m	Light Standard 2x BR	34
	<i>Magnolia soulangeana</i>	105-12cm	300-350cm	Counted	Selected Standard Clear Stem 175-200 3x RB	4
	<i>Prunus Amanogawa</i>	10-12cm	300-350cm	Counted	Standard 3x RB	10
	<i>Pyrus calleryana 'Chanticleer'</i>	12-14cm	350-425cm	Counted	Heavy Standard Clear Stem 175-200 5 brks 3x RB	13
	<i>Acer glabrum</i>	12-14cm	350-425cm	Counted	Heavy Standard Clear Stem 175-200 5 brks 3x RB	8
	<i>Prunus avium</i>	12-14cm	350-425cm	Counted	Heavy Standard Clear Stem min. 200-3/5 brks 3x RB	18
	<i>Quercus robur</i>	12-14cm	350-425cm	Counted	Heavy Standard Clear Stem min. 200-3/5 brks 3x RB	15
	<i>Malus sylvestris</i>	12-14cm	350-425cm	Counted	Heavy Standard Clear Stem min. 200-3/5 brks 3x RB	8
	<i>Acer campestre</i>	12-14cm	350-425cm	Counted	Heavy Standard Clear Stem min. 200-3/5 brks 3x RB	8
	<i>Carpinus betulus</i>	12-14cm	350-425cm	Counted	Heavy Standard Clear Stem min. 200-3/5 brks 3x RB	1
	<i>Sorbus aucuparia</i>	12-14cm	350-425cm	Counted	Heavy Standard Clear Stem min. 200-3/5 brks 3x RB	11
	<i>Prunus avium 'Plena'</i>	12-14cm	350-425cm	Counted	Heavy Standard Clear Stem 175-200 5 brks 3x RB	2
	<i>Acer campestre</i>	20-25cm	500-550cm	1/m	Semi mature 3x RB	34
	<i>Carpinus betulus</i>	20-25cm	500-550cm	1/m	Semi mature 3x RB	34
	<i>Sorbus torminalis</i>	20-25cm	500-550cm	1/m	Semi mature 3x RB	34

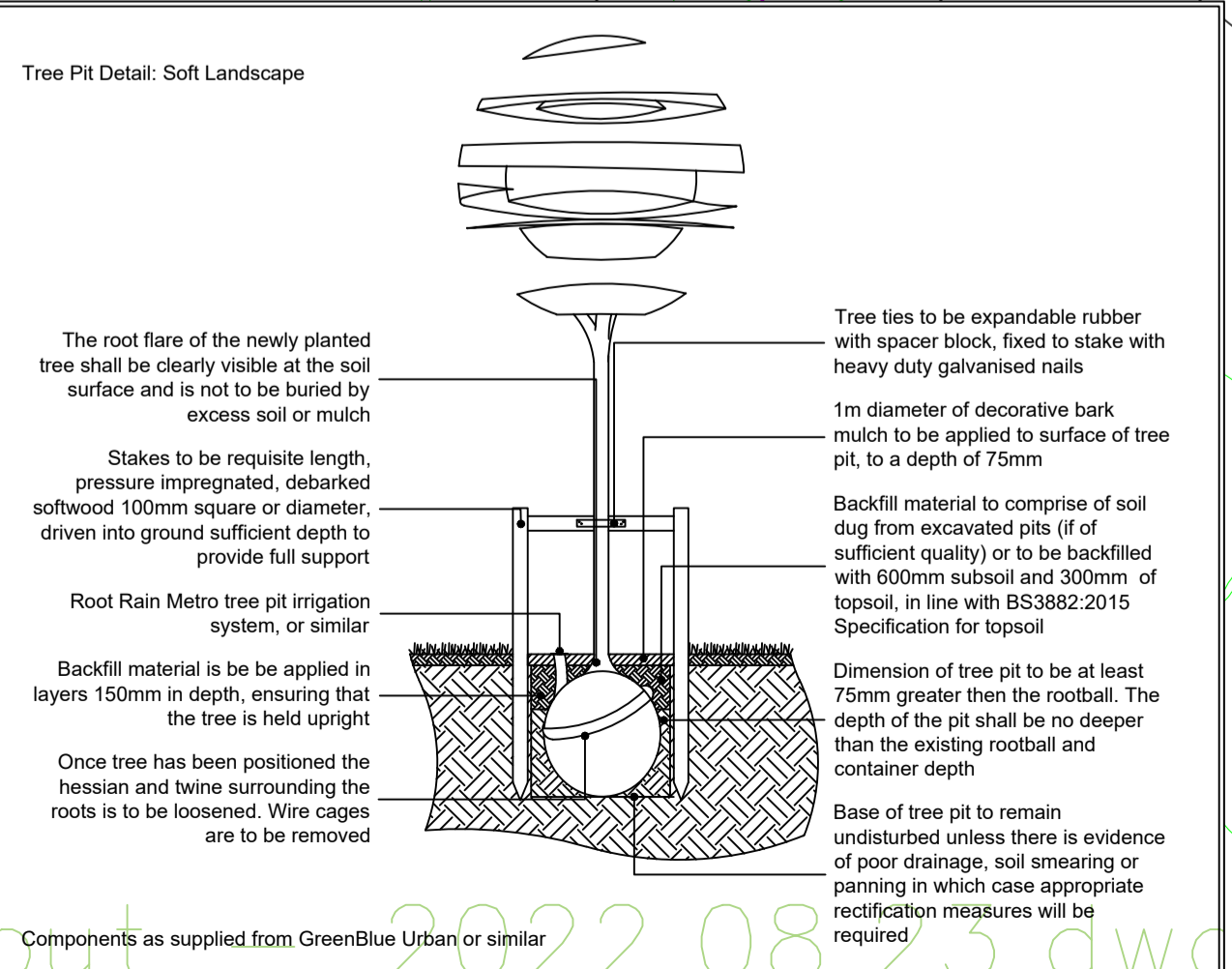
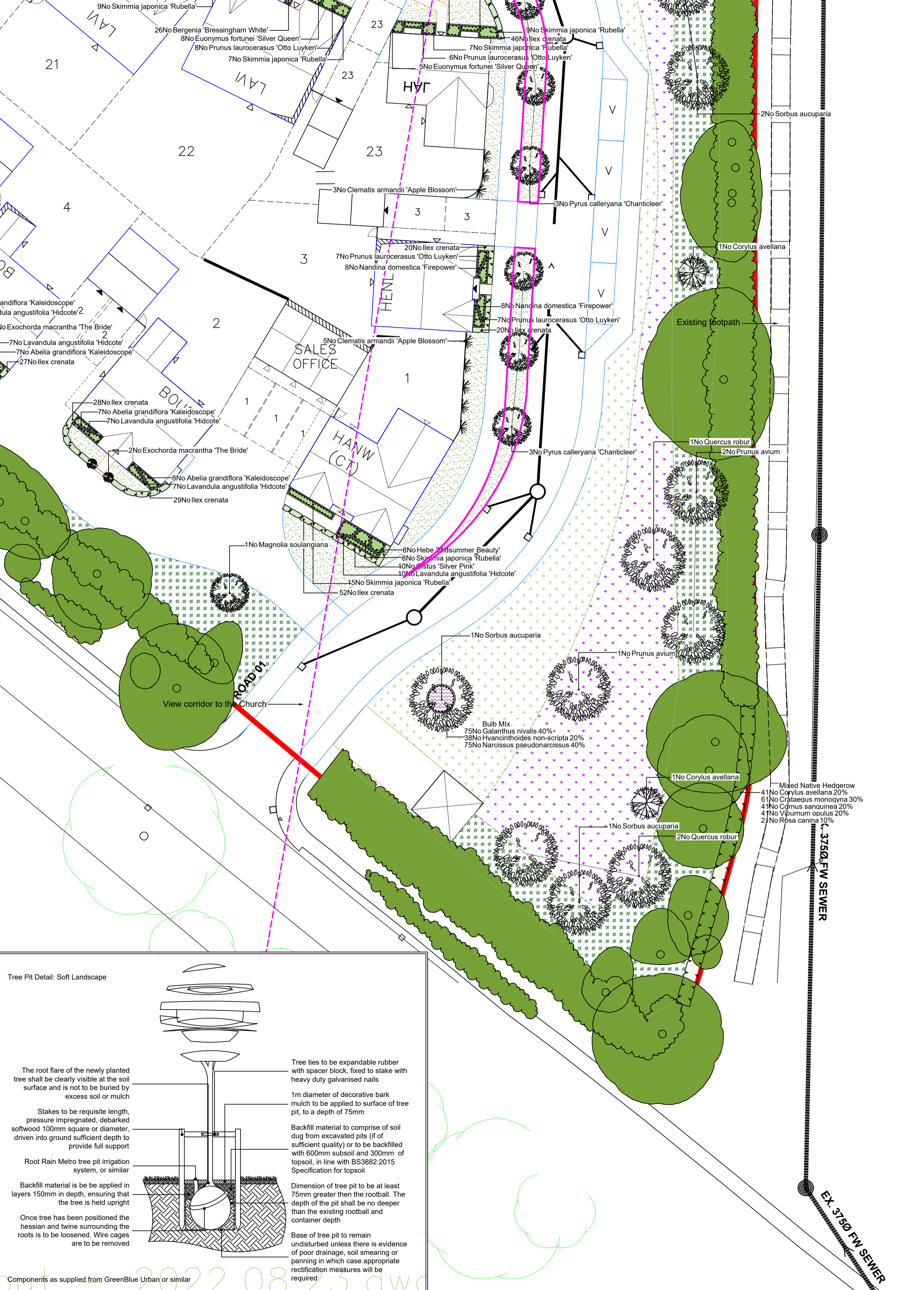
Shrubs	Species Name	Height	Pot Size	Specification	Density	No
	<i>Abelia grandiflora 'Kaleidoscope'</i>	40-60cm	S-7 SL	Bushy 5 brks C	4/m²	35
	<i>Azalea melanocarpa</i>	30-40cm	SL	Bushy 5 brks C	4/m²	35
	<i>Ceanothus 'Blue Mound'</i>	40-60cm	S-7 SL	Bushy 5 brks C	4/m²	35
	<i>Choisya 'Aztec Pearl'</i>	40-60cm	S-7 SL	Bushy 5 brks C	4/m²	115
	<i>Cistus 'Silver Pink'</i>	40-60cm	S-7 SL	Bushy 5 brks C	4/m²	42
	<i>Cornus sanguinea</i>	40-60cm	3L	Branched BR. Planted and maintained as a hedgerow	0.3Ctr Double Staggered at 0.3m offset	41
	<i>Cornus sanguinea</i>	40-60cm	1+1	Feather BR	1/m²	66
	<i>Cornus sanguinea 'Midwinter Fire'</i>	40-60cm	3L	Branched 5 brks C	4/m²	30
	<i>Cornus sanguinea 'Midwinter Fire'</i>	30-40cm	3L	Bushy C	4/m²	103
	<i>Corylus avellana</i>	125-150cm	15L	Branched 7 brks C	Counted	226
	<i>Corylus avellana</i>	80-100cm	10L	Transplant BR	1/m²	79
	<i>Corylus avellana</i>	40-60cm	1+1	Feather BR	1/m²	66
	<i>Crataegus monogyna</i>	100-125cm	15L	Transplant BR	1/m²	226
	<i>Euonymus fortunei 'Emerald Gaiety'</i>	30-40cm	3L	Bushy C	4/m²	79
	<i>Euonymus fortunei 'Silver Queen'</i>	30-40cm	S-7 SL	Bushy 3 brks C	4/m²	230
	<i>Exochorda macrantha 'The Bride'</i>	60-80cm	15L	Bushy 5 brks C. Planted as a specimen shrub	Counted	6
	<i>Hebe 'Midsummer Beauty'</i>	40-60cm	S-7 SL	Bushy 7 brks C	4/m²	61
	<i>Hebe 'Red Edge'</i>	40-60cm	S-7 SL	Bushy 7 brks C	4/m²	61
	<i>Ilex aquifolium</i>	100-125cm	15L	Leader and laterals C	4/m²	173
	<i>Ilex crenata</i>	30-40cm	3L	Leader With Lateralis C. Planted and maintained as a hedgerow	4/m²	139
	<i>Lavandula angustifolia 'Hidcote'</i>	30-40cm	S-7 SL	Bushy 7 brks C	4/m²	53
	<i>Lavandula stoechas</i>	30-40cm	3L	Bushy C	4/m²	45
	<i>Nandina domestica 'Firepower'</i>	40-60cm	S-7 SL	Bushy 5 brks C	4/m²	154
	<i>Osmanthus burkwoodii</i>	30-40cm	3L	Bushy C. Planted and maintained as a hedgerow	4/m²	154
	<i>Prunus cistena</i>	60-80cm	10L	Branched 5 brks C. Planted as a specimen shrub	Counted	8
	<i>Prunus laurocerasus 'Otto Luyken'</i>	40-60cm	S-7 SL	Bushy 5 brks C	4/m²	187
	<i>Prunus spinosa</i>	40-60cm	1+1	Feather BR	1/m²	66
	<i>Rhamnus frangula</i>	40-60cm	1+1	Feather BR	1/m²	79
	<i>Rosa argentea</i>	60-80cm	1+1	Feather BR	1/m²	79
	<i>Rosa canina</i>	80-100cm	Branched BR. Planted and maintained as a hedgerow	0.3Ctr Double Staggered at 0.3m offset	21	
	<i>Rosa carina</i>	80-100cm	Branched BR	1/m²	226	
	<i>Rosmarinus officinalis 'Sissinghurst Blue'</i>	30-40cm	3L	Transplant BR	4/m²	33
	<i>Santolina chamaecyparissus 'Lemon Queen'</i>	30-40cm	3L	Bushy C	4/m²	33
	<i>Skimmia japonica 'Rubella'</i>	40-60cm	S-7 SL	Bushy 5 brks C	4/m²	53
	<i>Viburnum opulus</i>	60-80cm	Branched BR. Planted and maintained as a hedgerow	0.3Ctr Double Staggered at 0.3m offset	41	
	<i>Viburnum opulus</i>	80-100cm	1+1	Feather BR	1/m²	226
	<i>Viburnum opulus</i>	40-60cm	1+1	Feather BR	1/m²	79

Climbers	Species Name	Height	Pot Size	Specification	Density	No
	<i>Clematis amandii 'Apple Blossom'</i>	80-100cm	15L	Several Shoots 7 brks C	Counted	2
	<i>Lonicera periclymenum 'Graham Thomas'</i>	100-150cm	10L	Several Shoots 5 brks C	Counted	7

Herbaceous	Species Name	Height	Pot Size	Specification	Density	No
	<i>Bergenia 'Bressingham White'</i>	S-7 SL	4L	102	4/m²	102
	<i>Carex pendula</i>	3L	Bushy C	4/m²	66	
	<i>Thymus vulgaris</i>	3L	Bushy C	4/m²	103	

Bulbs	Species Name	Specification	Density	No
	<i>Gallanthus nivalis</i>	10size 30m²	1833	33
	<i>Hyanicthoides non-scripta</i>	10size 30m²	168	33
	<i>Narcissus pseudonarcissus</i>	10size 30m²	1333	33

Marginal / Aquatics	Species Name	Pot Size	Specification	Density	No
	<i>Aconitum napellus</i>	3-3.5L	Well Rooted	3/m²	37
	<i>Carex acutiformis</i>	3-3.5L	Well Rooted	3/m²	37
	<i>Carex pseudocarex</i>	3-3.5L	Well Rooted	3/m²	37
	<i>Lythrum salicaria</i>	3-3.5L	Well Rooted	3/m²	37
	<i>Myosotis scorpioides</i>	3-3.5L	Well Rooted	3/m²	37



SPECIFICATION
All works generally, to comply with the written Soft Landscape Specification.

In case of quantity discrepancies, the quantities on the plan(s) take precedent over the quantities shown in the planting schedule.

NOTES:
DO NOT SCALE FROM DRAWING
NOT FOR CONSTRUCTION, FOR PLANNING PURPOSES ONLY

See sheet 3 of 3 for tree pit detail of trees within verges

Scale: 1:200@A1
Drawing no: HAY23648-11A Sheet 1 of 3
drawn: SR checked: JC

ACD ENVIRONMENTAL
HEAD OFFICE
Roddourne Rail Business Centre, Grange Lane, Malmesbury, SN16 0ES
Tel: 01666 825646
4 & 5 The Old Mill, Fry's Yard, Bridge Street, Godalming, GU7 1HP
Tel: 01483 425714
Suite 6, Crescent House, Yonge Close, Eastleigh, SO50 9SX
Tel: 02382 026300
email: mail@acdenv.co.uk
www.acdenvironmental.co.uk

HAYFIELD

scheme: Land off Berry Hill Road, Aderbury, Banbury
client: Hayfield Homes
drawing: Landscape Proposals
date: March 2022
scale: 1:200@A1
drawing no: HAY23648-11A Sheet 1 of 3
drawn: SR checked: JC

Copyright of ACD Environmental Ltd. All rights described in Chapter IV of the Copyright, Designs and Patents Act 1988 have been generally asserted. 2011. Copyright of this plan remains with ACD until all fees have been paid in full.