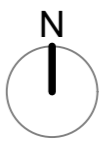
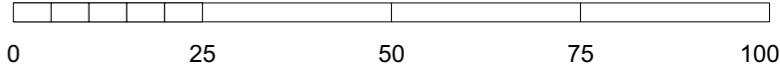




NOTES

This drawing is the property of FPCR Environment and Design Ltd and is issued on the condition it is not reproduced, retained or disclosed to any unauthorised person, either wholly or in part without written consent of FPCR Environment and Design Ltd.



KEY

- Site Boundary
- Existing Woodland/Trees/Scrub Retained
(Root Protection Area shown in blue)
- Proposed Parkland Tree Planting
 - Indicative mix
 - Species
 - Girth
 - Root
 - Acer campestre* 14-16cm RB
 - Alnus glutinosa* 14-16cm RB
 - Arbutus unedo* 14-16cm RB
 - Betula pendula* 14-16cm RB
 - Corylus avellana* 14-16cm RB
 - Fagus sylvatica* 14-16cm RB
 - Pinus sylvestris* 14-16cm RB
 - Populus nigra* 14-16cm RB
 - Prunus avium* 14-16cm RB
 - Quercus ilex* 14-16cm RB
 - Quercus robur* 14-16cm RB
 - Quercus frainetto* 14-16cm RB
 - Salix fragilis* 14-16cm RB
 - Sorbus aucuparia* 14-16cm RB
 - Sorbus torminalis* 14-16cm RB
 - Tilia x europaea* 14-16cm RB
- Proposed Feature Tree Planting
 - Indicative mix
 - Species
 - Girth
 - Root
 - Quercus robur* 18-20cm RB
 - Quercus frainetto* 18-20cm RB
 - Fagus sylvatica* 18-20cm RB
- Proposed Orchard Tree Planting
(locally appropriate mix of fruit trees)
- Proposed Native Hedgerow Planting
Location and extents of native hedgerow adjacent to developable area shown indicatively and subject to detailed layout design. Height of hedgerow to be managed to maintain sightlines between housing and public open space
 - Indicative Mix
 - Species
 - Size
 - Root
 - Acer campestre* 60-80cm br
 - Corylus avellana* 60-80cm br
 - Crateagus monogyna* 60-80cm br
 - Ilex aquifolium* 60-80cm C
 - Prunus spinosa* 60-80cm br
 - Rosa canina* 60-80cm br
 - To be planted at 7 plants/m double staggered
- Proposed Native Scrub Planting
(To be undersown with Emorsgate EW1 Woodland Mixture at 4g/m² or similar and approved)
 - Indicative Mix
 - Species
 - Size
 - Root
 - Acer campestre* 60-80cm br
 - Corylus avellana* 60-80cm br
 - Crateagus monogyna* 60-80cm br
 - Cornus sanguinea* 60-80cm br
 - Prunus spinosa* 60-80cm br
 - Rosa canina* 60-80cm br
 - To be planted at density circa 2 plants/m²
- Proposed Native Woodland Planting
(To be undersown with Emorsgate EW1 Woodland Mixture at 4g/m² or similar and approved)
 - Indicative Mix
 - Species
 - Size
 - Root
 - Acer campestre* 60-80cm br
 - Alnus glutinosa* 60-80cm br
 - Betula pendula* 60-80cm br
 - Crateagus monogyna* 60-80cm br
 - Ilex aquifolium* 60-80cm C
 - Prunus spinosa* 60-80cm br
 - Sorbus aucuparia* 60-80cm br
 - To be planted at density circa 1-2 plants/m²
- Indicative Attenuation Basin Areas
(Refer to BWS Indicative Drainage Strategy)
- Proposed Wildflower Grassland
Emorsgate EM2 Standard General Purpose Wildflower Mix at 4g/m² or similar and approved. Approximate 1.0m strip to be maintained close mown adjacent to all highways, footpaths, residential areas and surfaces
- Proposed Amenity Grassland
Emorsgate EL1 Flowering Lawn Mix at 4g/m² or similar and approved
- Proposed Wet Grassland to Attenuation Basins
Emorsgate EM8 Meadow Grass for Wet Soils at 4g/m² or similar and approved
- Proposed Marginal Plug Planting
To be Naturescapes N7 Wetland Areas Plant Collection or similar and approved. To be planted up to 250mm above anticipated normal water level as plugs in groups of 5-10 plants to create stands
- Proposed Bulb Planting
To be planted in same species drifts
- Indicative footpaths
- Potential locations for Access Control
- Potential locations for Reptile Hibernacula
- Potential locations for Parkland Seats
- Potential locations for Signage
- Potential location for 1.0m post&rail fencing
(extents to be determined)
- Existing contours and levels
- Potential location for viewpoint
- Access (Refer to DAS for details)
- Proposed primary vehicular access
(refer to engineer drawing for details)
- Potential pedestrian/cycle connection
- Potential pedestrian access location
- Potential access location to Withycombe Farm
- Potential emergency access / pedestrian access
- Existing Public Right of Way

10511
Banbury, Oxfordshire
Bloor Homes

LANDSCAPE STRATEGY

PLANNING 1:1000 @ A1
16th June 2022 CEP / CEP

10511-FPCR-XX-XX-DR-L-0001 issue D

masterplanning
environmental assessment
landscape design
urban design
ecology
architecture
arboriculture

FPCR Environment and Design Ltd
Lockington Hall
Lockington
Derby
DE74 2RH

t: 01509 672772
e: mail@fpcr.co.uk
w: www.fpcr.co.uk