

Symbol	Label	Quantity	Manufacturer	Catalog Number	Description	Lumens Per Luminaire	Wattage
X1	X1	2	Holophone	DPL1.LA064.FW.W048	Column Mounted @ 6m	6611	48
X2	X2	4	Holophone	DPL1.LA064.FW.W048	Twin Column Mounted @ 6m	6611	96
X3	X3	50	Holophone	DPL1.LA064.AY.W048	Column Mounted @ 6m	6511	48
X4	X4	37	Holophone	D6D.1.LA014.SU.NR.W006	1m Ballard	497	6
X5	X5	8	Holophone	DPL1.LA024.NR.W015	Column Mounted @ 6m	2221	15
X6	X6	34	Holophone	2900G	Recessed Building Uplighter	3840	49
X7	X7	32	Holophone	1200MD	Recessed Roll Over Uplighter	60	2.5
X8	X8	16	Holophone	2100M	Recessed Tree Uplighter	1650	16

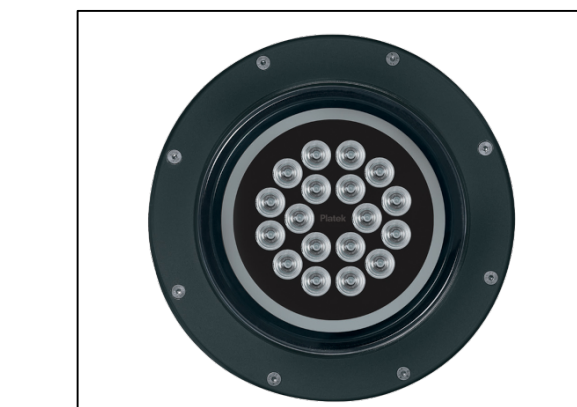
Description	Symbol	Avg	Min	Min/Avg
Access Road	+	14 lux	3 lux	0.21
Car Park	+	14 lux	5 lux	0.36
Car Park	+	16 lux	8 lux	0.50
Car Park	+	12 lux	3 lux	0.25
Cycle Path	+	10 lux	3 lux	0.30
Paving	+	12 lux	3 lux	0.25
Parking	+	16 lux	9 lux	0.56
Parking	+	17 lux	5 lux	0.29
Perimeter	+	13 lux	3 lux	0.23
Spill	+	0 lux	0 lux	N/A
Unit A Loading Door	+	20 lux	14 lux	0.70
Unit A Parking	+	14 lux	10 lux	0.71
Unit B Loading Door	+	20 lux	15 lux	0.65
Unit B Parking	+	24 lux	15 lux	0.63
Unit C Loading Door	+	20 lux	14 lux	0.70
Unit C Parking	+	19 lux	15 lux	0.79
Unit D Loading Door	+	20 lux	14 lux	0.70
Unit D Parking	+	16 lux	9 lux	0.56
Unit E Loading Door	+	20 lux	14 lux	0.70
Unit E Parking	+	18 lux	15 lux	0.83
Unit F Loading Door	+	20 lux	14 lux	0.70
Unit F Parking	+	18 lux	13 lux	0.72
Unit G Loading Door	+	22 lux	16 lux	0.73
Unit G Parking	+	17 lux	11 lux	0.65
Unit H Loading Door	+	21 lux	15 lux	0.71
Unit H Parking	+	18 lux	13 lux	0.72
Unit I Loading Door	+	22 lux	16 lux	0.73
Unit J Loading Door	+	20 lux	15 lux	0.75
Unit K Loading Door	+	17 lux	13 lux	0.76
Unit L Loading Door	+	20 lux	15 lux	0.75
Unit M Loading Door	+	18 lux	13 lux	0.72
Unit M Parking	+	21 lux	15 lux	0.71
Unit N Loading Door	+	17 lux	12 lux	0.71



FITTING TYPES: X1, X2, X3 AND X5.



FITTING TYPES: X4.



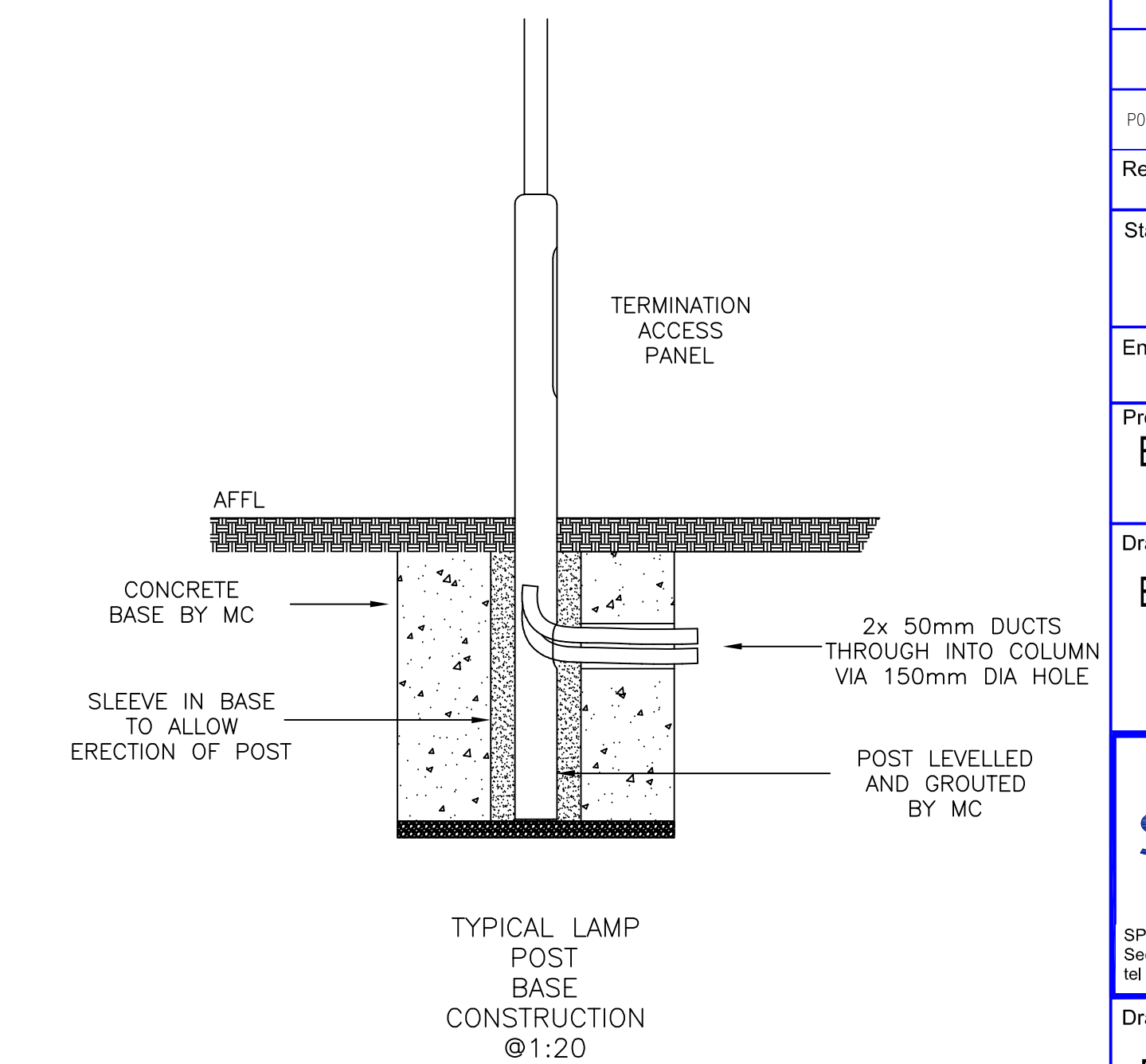
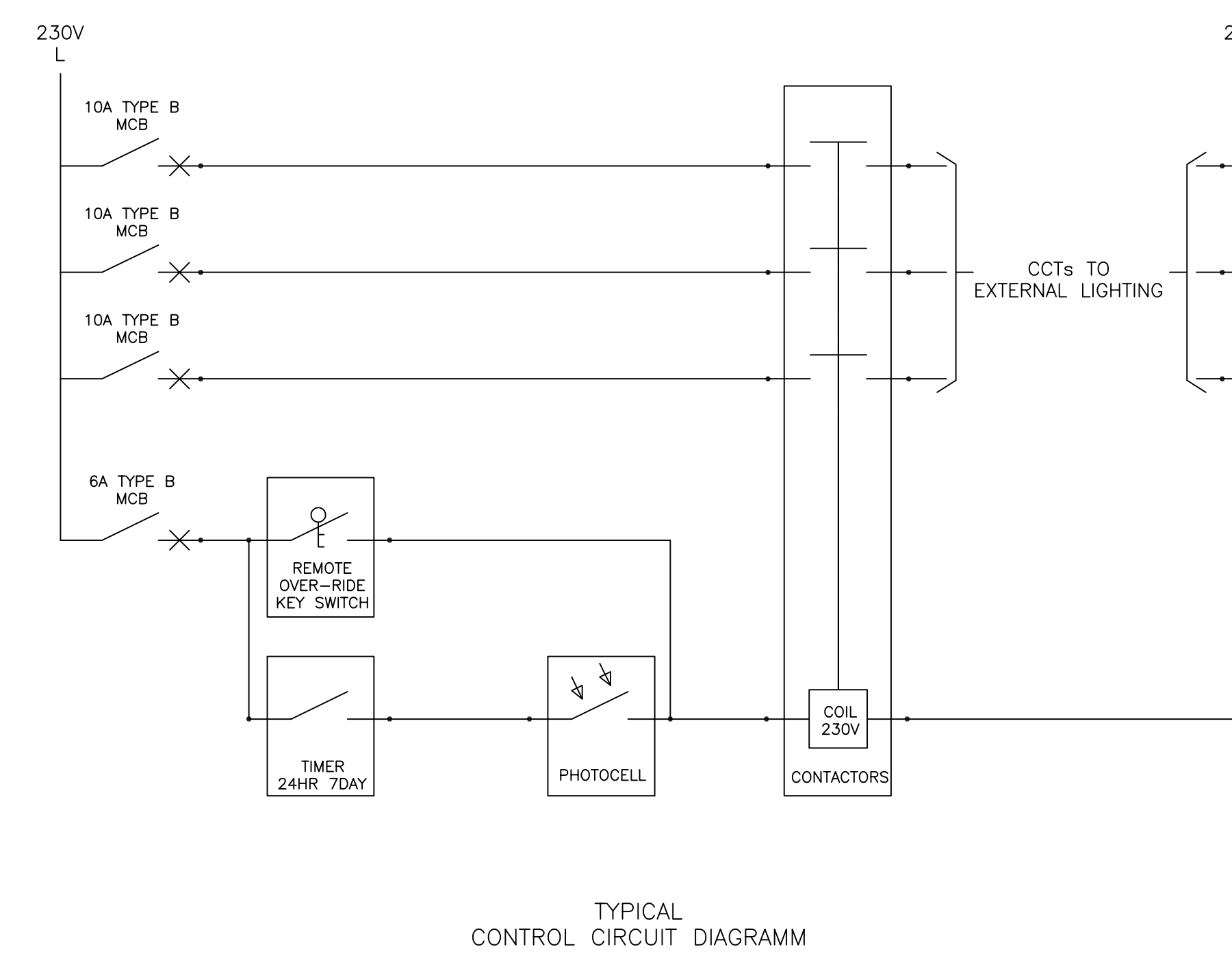
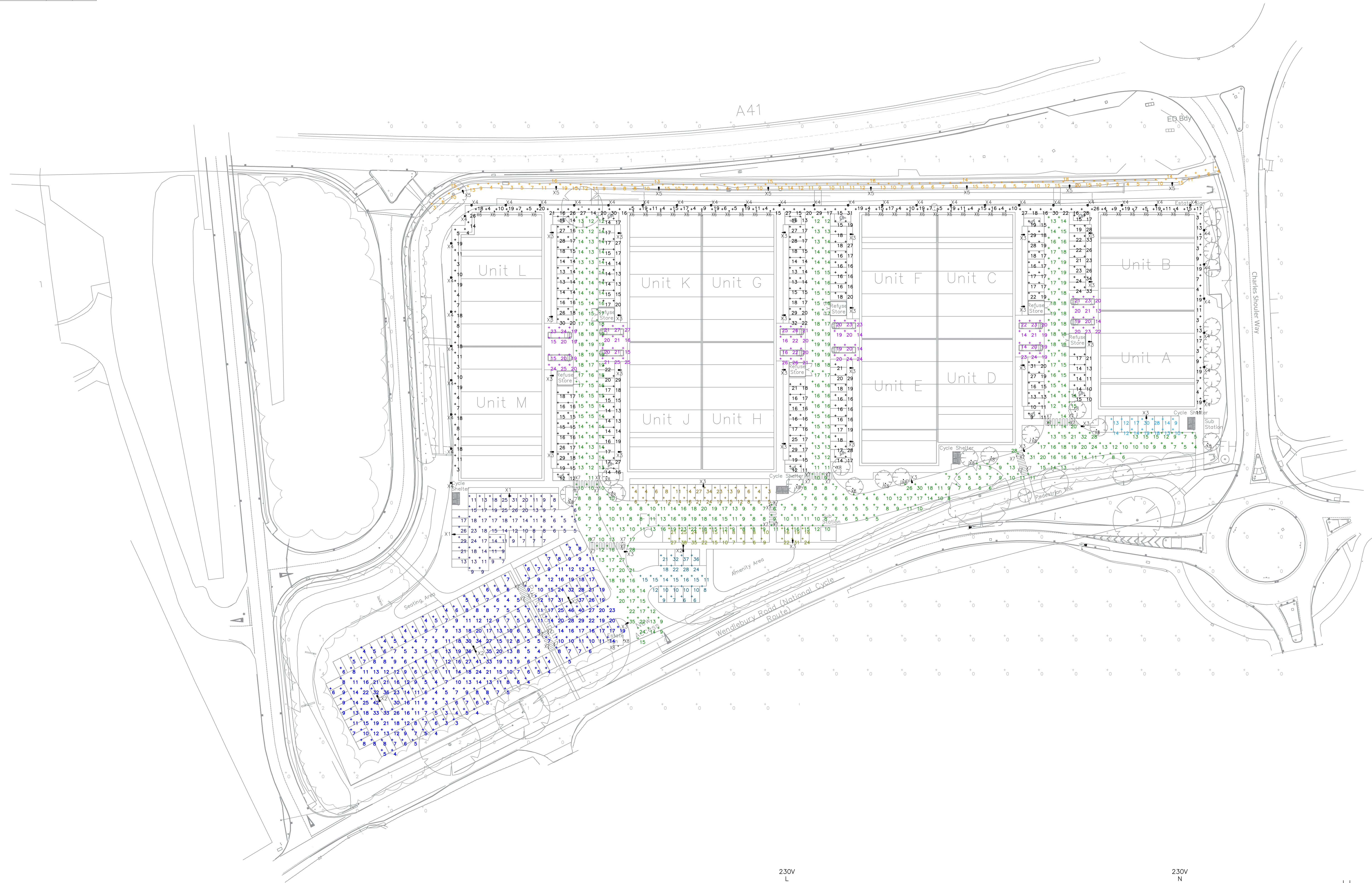
FITTING TYPES: X6.



FITTING TYPES: X7.



FITTING TYPES: X8.



0 100
This drawing may have been reduced
Original Scale: 100mm

Number	Description

Number	Description

- NOTES
1. LIGHTING COLUMNS TO BE CONTROLLED VIA TIMER & PHOTOCELL ARRANGEMENT TO PREVENT ILLUMINATION OF FITTINGS DURING DAYLIGHT HOURS & POST CURFEW (11PM-6AM LOCAL TIME).
 2. LUMINAIRES TO BE SELECTED IN ACCORDANCE OF DESIGN VALUES & CRITERIA SHOWN.
 3. CAR PARK LUX LEVELS DESIGNED TO A AVERAGE OF 10 LUX 0.25 Uo IN ACCORDANCE TO TABLE 4 BS 5489-1:2020.
 4. WAREHOUSE ENTRANCES LUX LEVELS DESIGNED TO AN AVERAGE OF 20 LUX.

P01	PLANNING SUBMISSION	J.A.B.	JUN 22	J.A.B.	JUN 23
Rev	Description	By	Date	Checked	Issue Date

Status of Drawing
PLANNING SUBMISSION

Engineer	J.A.B.	Drawn	J.A.B.	Date	JUNE 22	Checked		Date	
----------	--------	-------	--------	------	---------	---------	--	------	--

Project Name
BICESTER GATEWAY

Drawing Title
EXTERNAL LIGHTING

SPIE Limited - Build and Connect
Second Floor, Unit 1B, Stratford Court, Cranmore Boulevard, Solihull B904QT.
Tel +44 (0) 121 713 9100 www.spie.co.uk

Drawing No.	BGW-SPIE-X-XX-DR-E-6350	Rev.	P01	Scale @/to	1/500
Cad Ref.					