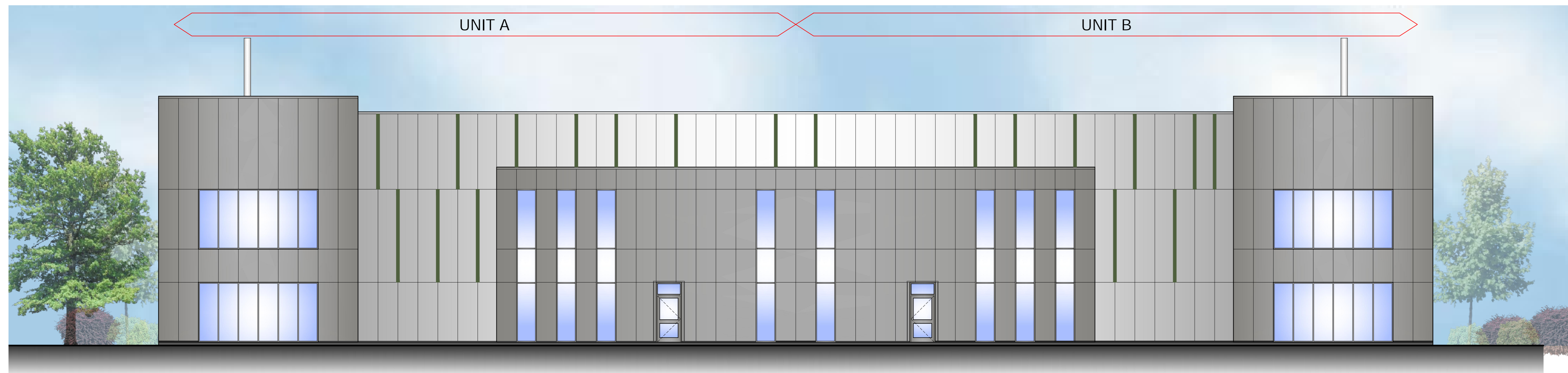


North Elevation
(Facing A41)

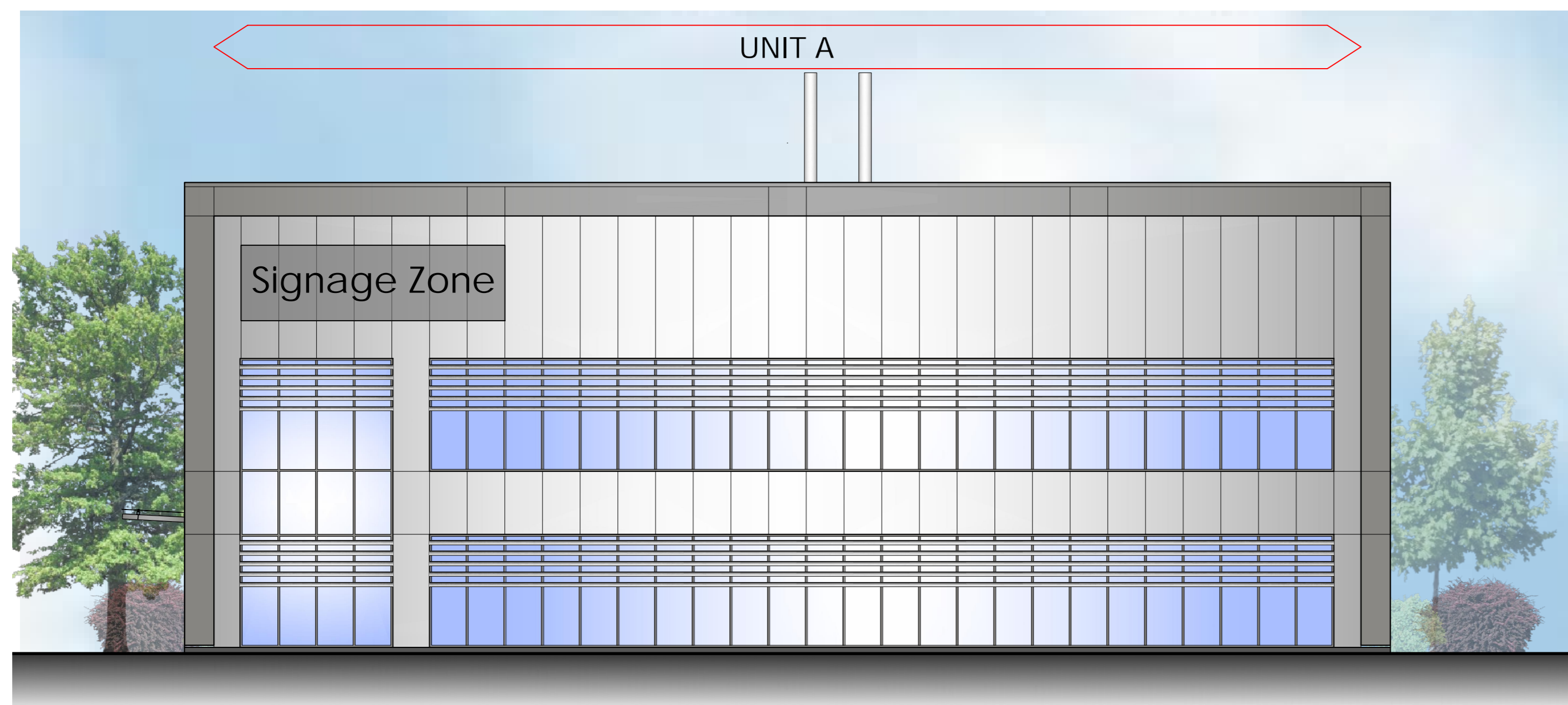


West Elevation

notes
This drawing and design is the copyright of oja architects llp and must not be reproduced in part or in whole without prior written consent. Contractors must verify all dimensions on the before commencing work or preparing shop drawings. If in doubt ASK.
Where this drawing contains any Ordnance Survey mapping material, it has been reproduced under license number 100022776.
Ordnance Survey © Crown copyright



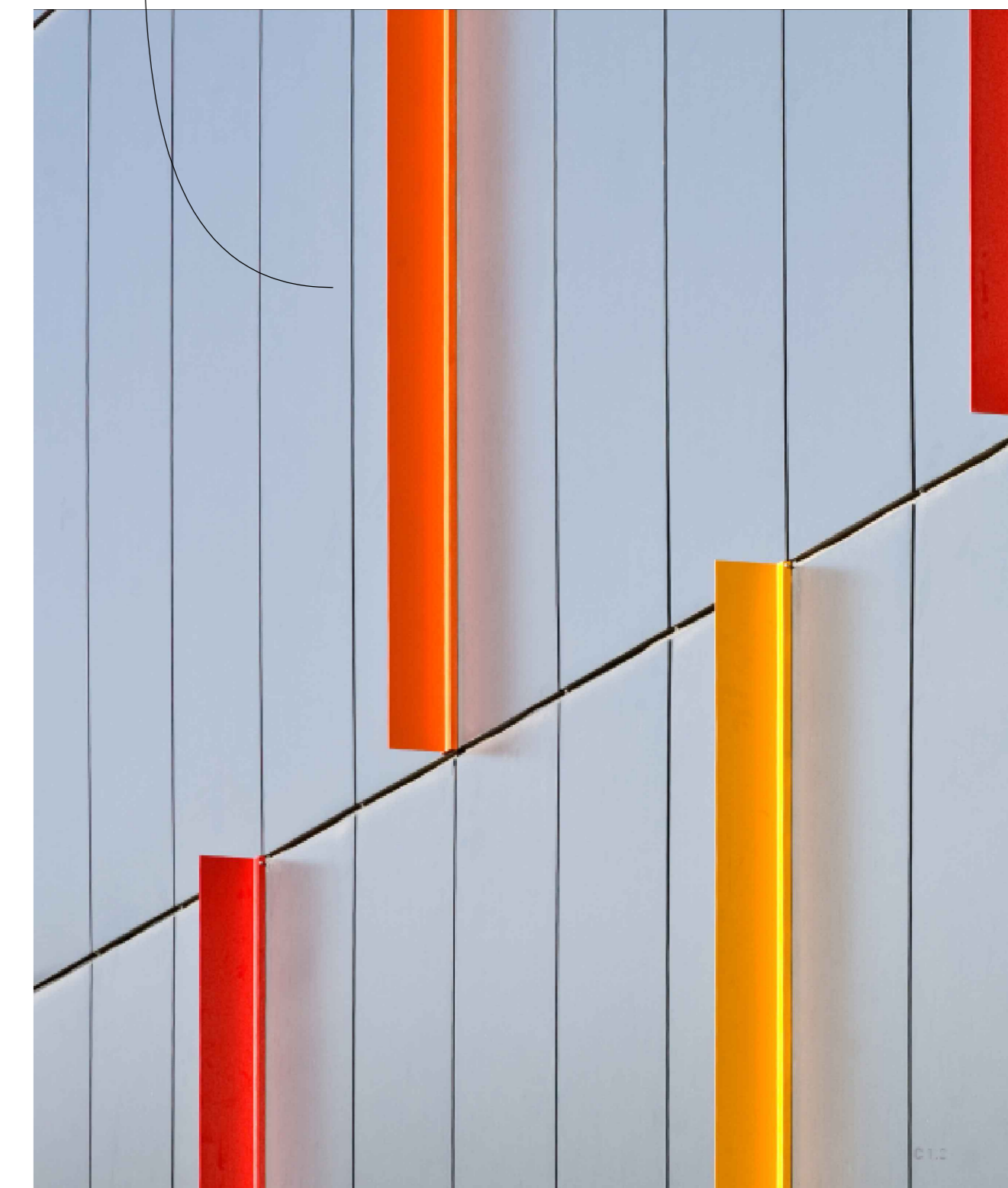
East Elevation



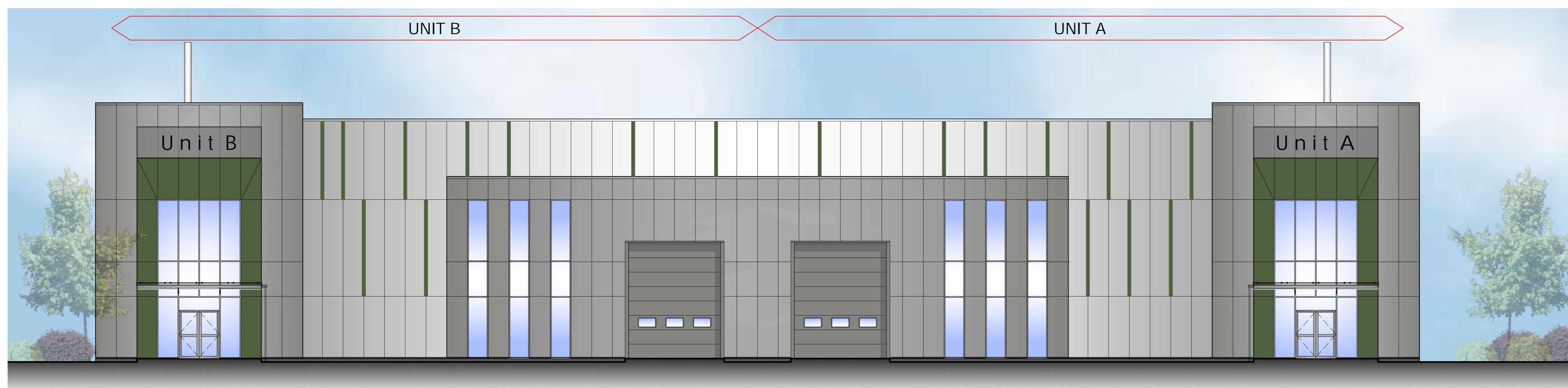
South Elevation

SCHEDULE OF MATERIAL

ROOF	HPS200 Ultra Prefinished Profiled Steel Cladding Colour - Goosewing Grey RAL 7038 U Value - 0.16 W/m ² K
EXTERNAL WALLS	Trimo Qbiss One Metal Composite Cladding System Vertically Laid
Generally - Project Frame & Main Entrance -	Colour - Metallic Light Silver RAL 9006 Colour - Metallic Dark Silver RAL 9007
Entrance Frame -	Trimo Qbiss One Metal Composite Colour - Alpine Green RAL 130 40 20
Aluminium Extrusion - HF 1 (Trimo Reference)	Colour - Alpine Green RAL 130 40 20
CURTAIN WALLING / WINDOWS / DOORS	Polyester Powder Coated Aluminium Frame Double Glazed Unit Solar Reflective Glazing Panels (G Value - 0.36). Colour - Merlin Grey
FIRE EXIT EXTERNAL DOORS	Polyester Powder Coated Brise Soleil to South Elevation Colour - Metallic Silver RAL 9006
LOADING DOORS	Polyester Powder Coated Aluminium Frame Double Glazed Unit Colour - Merlin Grey
	Insulated electrically operated Loading Doors Colour - Merlin Grey U Value - 1.50 W/m ² K (average inc. frames)



Aluminium Extrusions



West Elevation

no. date revision by
oja architects
oja architects llp
1170 Elliott Court
Herald Avenue
Coventry Business Park
COVENTRY CV5 6UB
E: oja@oja-architects.com
W: www.oja-architects.com
oja architects is the trading name of a limited liability partnership registered in England No. 06280711
client

TPG/Bloombridge
project
Bicester Gateway
drawing
Proposed Elevations
Units A-B
scale 1:100 @ A1 drawn ks
checked spp date 30-06-2022
no.

7081-062
Planning