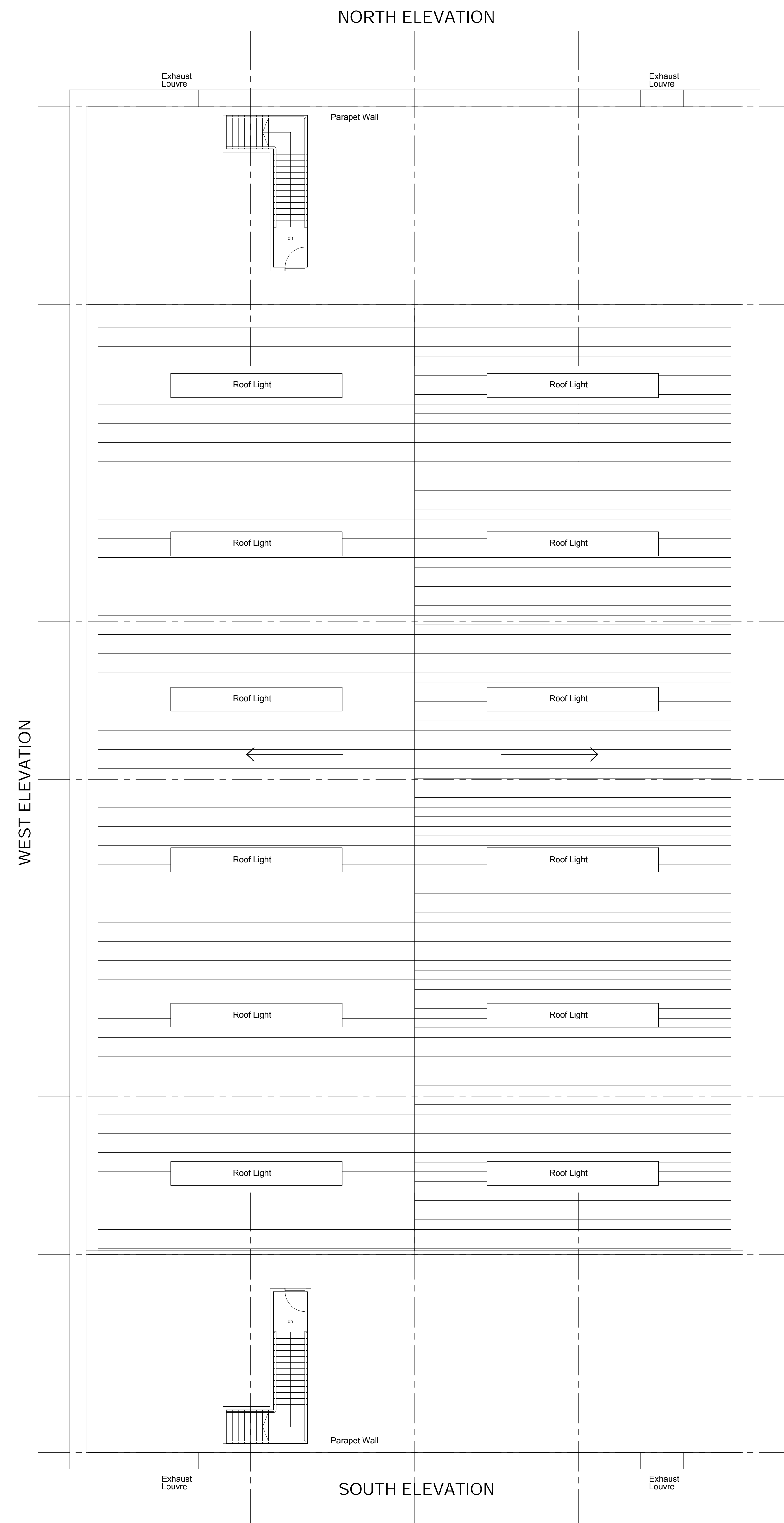


notes
 This drawing and design is the copyright of oja architects llp and must not be reproduced in part or in whole without prior written consent. Contractors must verify all dimensions on site before commencing work or preparing shop drawings.
 Where this drawing contains any Ordnance Survey mapping material, it has been reproduced under licence number 100022278.
 Ordnance Survey © Crown copyright



EAST ELEVATION

Roof

CA32/1000R built up profiled Corus steel cladding 0.7mm thick with HPS200 finish, insulated to meet SBEM calculations(0.16 Km²/W) with white finished metal internal linings.
 Linings to be Class 0 rated for surface spread of flame tested to BS 476.
 Thermal insulation to roof to be non-combustible to BS 476 Part 4 Euroclass A1 (LPC List B) F.M. approved and non-hydroscopic.
 Roof to be complete with 10% triple skin translucent GRP site assembled rooflights, insulated to meet statutory requirements, to be classified non-fragile with BS4145 Class 1 liner and Class 3 outer sheet.
 Gutters to be manufactured from 1.5mm pre-galvanised steel with pre-bonded 1.2mm PVC membrane to exposed faces, all to achieve a 25 year guarantee in line with the roofing system. Gutters to be insulated composite type with syphonic drainage.
 Gutters to be designed to Cat 3 of BS EN 12056 Part 2 2000 for parapet gutters. All gutters to be complete with weir overflows.

no.	date	revision	by



oja architects llp
 1170 Elliott Court
 Herold Avenue
 Coventry Business Park
 COVENTRY CV5 6UB
 E: oja@oja-architects.com
 W: www.oja-architects.com
 OJA ARCHITECTS is the trading name of a UK Architects Company limited by limited company
 no. 08079620 and AIA ARCHITECTS LLP is an unincorporated partnership registered in England no. OC260712
 client

Bicester Gateway Ltd

project
 Bicester gateway

drawing

Proposed Roof Plan
 Unit A-B

scale	1:100 @ A0	drawn	no
checked	spp	date	30-06-2022

no

7081-061
 PLANNING