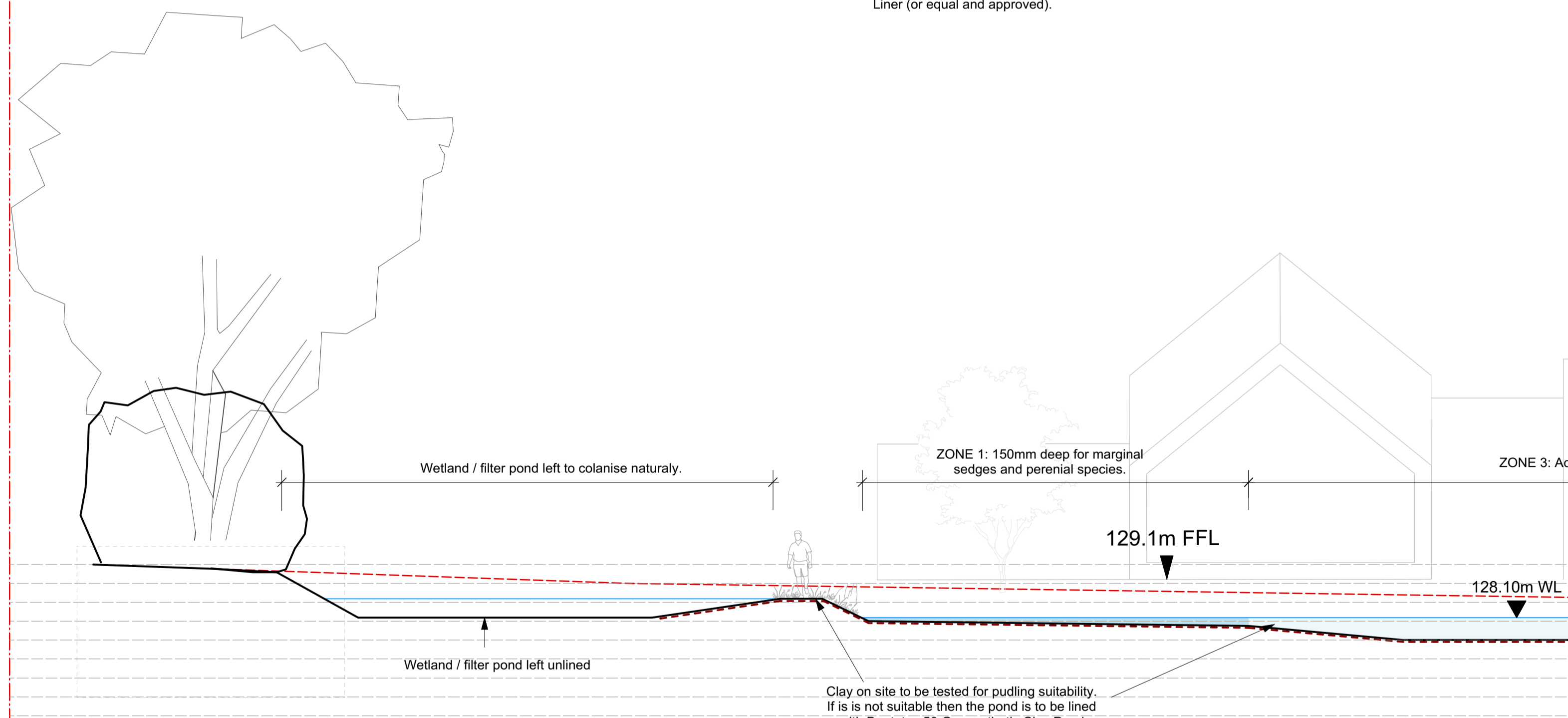
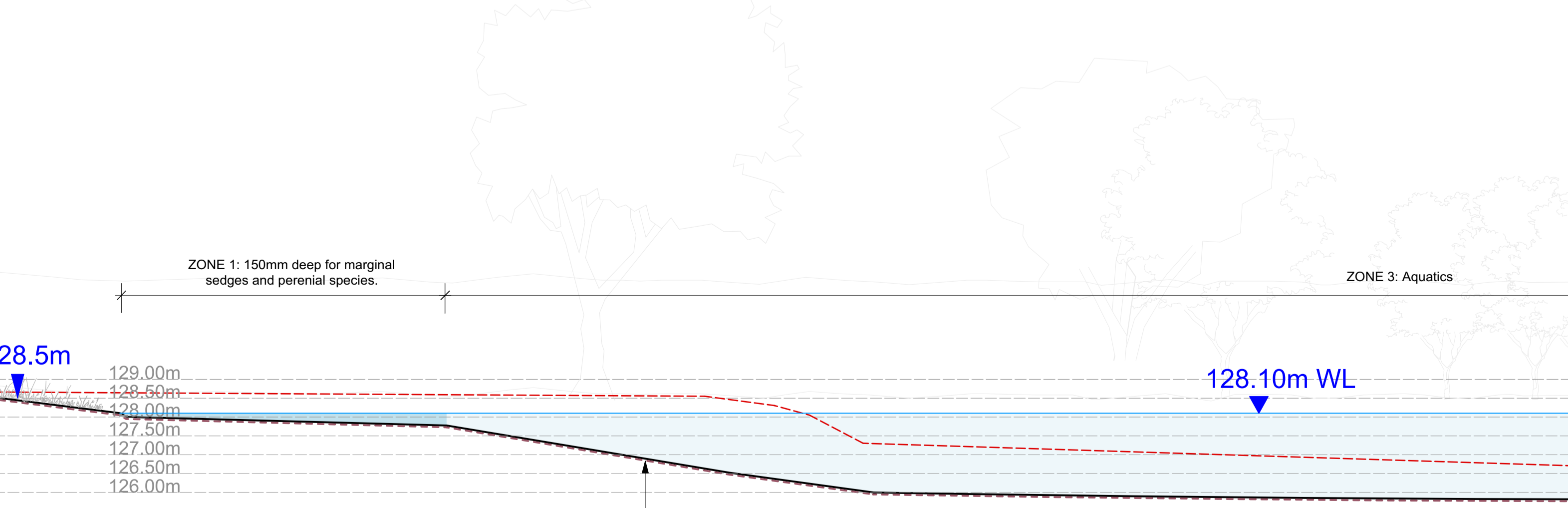


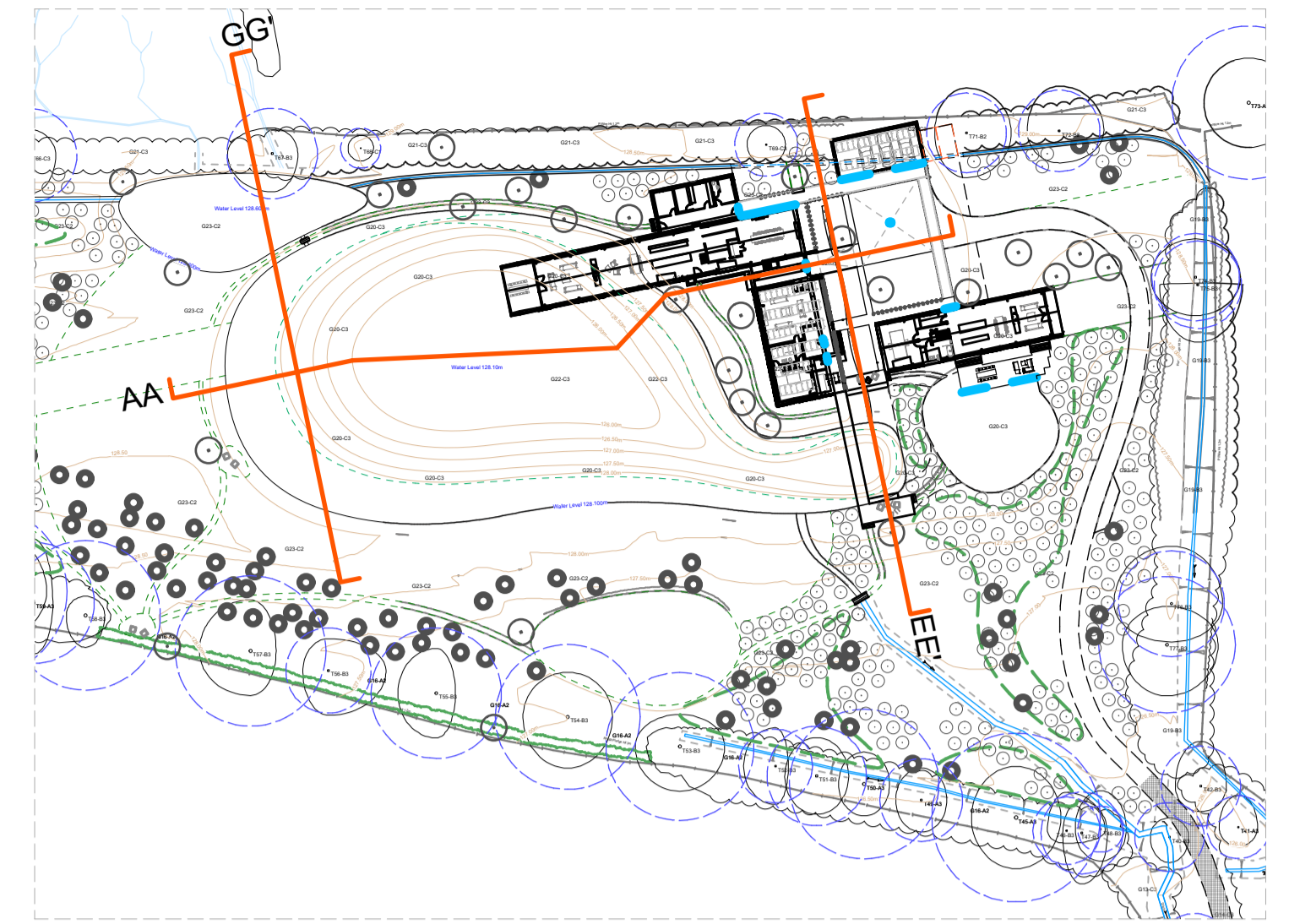
Section EE'  
1:200



Section GG'  
1:200



Section AA'  
1:200



Site Plan @ 1:1000

Clay on site to be tested for puding suitability. If is is not suitable then the pond is to be lined with Bentotex 50 Geosynthetic Clay Pond Liner (or equal and approved).

Clay on site to be tested for puding suitability. If is is not suitable then the pond is to be lined with Bentotex 50 Geosynthetic Clay Pond Liner (or equal and approved).

Clay on site to be tested for puding suitability. If is is not suitable then the pond is to be lined with Bentotex 50 Geosynthetic Clay Pond Liner (or equal and approved).

rev	date	changes
		Detail Design (Plan of work Stage 4)
		client
		Patrick & Gilly
		Earthworks Sections
		scale
		1:100 @ A1
		drawn by / checked by
		JM / MS

**SEED**  
LANDSCAPE DESIGN  
Upper Floor, School House  
Bath BA1 5NA  
+44 (0)1225 424 514  
info@seedlandscape.com  
project  
Oxpens, Oxfordshire

Contractors must check all dimensions and levels on site. Only figured dimensions to be worked from