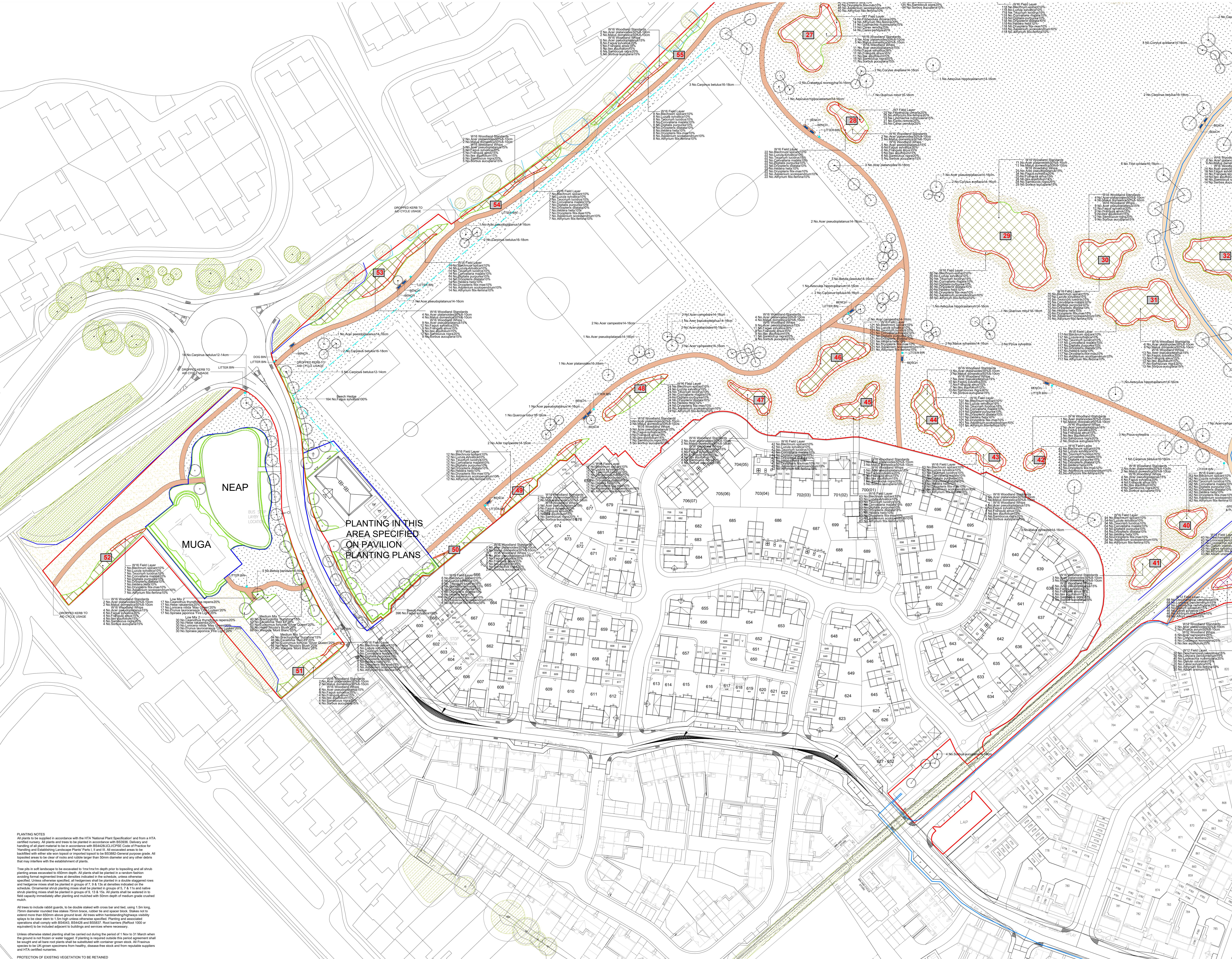


KEY:

- Proposed Shrub Planting
- Community Park Boundary
- Proposed Field Layer Planting (see drawing and planting schedule for specific details)
- Field Layer Planting to be specified with Emerging 100% Woodland Mature
- SPECIMEN TREES**
- W16 Woodland Standards: Quercus pedunculata, Betula pendula, Salix alba, Corylus avellana, Castanea sativa
- W16 Field Layer: See Planting Schedule
- W16 Woodland Standards: Quercus robur, Betula pendula, Salix alba, Corylus avellana, Castanea sativa, Lonicera xylosteum, Lonicera nigra, Lonicera xylosteum, Lonicera nigra, Lonicera xylosteum, Lonicera nigra
- W16 Field Layer: See Planting Schedule
- W16 Woodland Standards: Quercus robur, Betula pendula, Salix alba, Corylus avellana, Castanea sativa, Lonicera xylosteum, Lonicera nigra, Lonicera xylosteum, Lonicera nigra
- W16 Field Layer: See Planting Schedule
- W16 Woodland Standards: Quercus robur, Betula pendula, Salix alba, Corylus avellana, Castanea sativa, Lonicera xylosteum, Lonicera nigra, Lonicera xylosteum, Lonicera nigra
- W16 Field Layer: See Planting Schedule



PLANTING NOTES

All plants to be specified in accordance with the NITA National Plant Specification and any NITA certified nursery. All plants and trees to be planted in accordance with BS2339:2003. Delivery and handling of all plants must be in accordance with BS2406:2012 Code of Practice for Handling and Establishing Landscape Plants Parts 1, II and III. All associated areas to be backfilled with other site won topsoil or imported topsoil to be BS2382:2003. General purpose grade. All topsoil areas to be clear of rocks and rubble larger than 20mm diameter and any other debris that may interfere with the establishment of plants.

Tree pits in soft landscape to be excavated to 150mm depth prior to topsoil and all shrub planting areas excavated to 600mm depth. All plants shall be planted in a random fashion avoiding formal regimented lines at densities indicated in the schedule, unless otherwise specified. Unless otherwise specified, all hedgerows shall be planted in a double staggered rows and hedgerow mixes shall be planted in groups of 7 & 13m at densities indicated in the schedule. Ornamental shrub planting mixes shall be planted in groups of 7, 8, 11m and native shrub planting mixes shall be planted in groups of 13 & 15m. All plants shall be watered in field capacity immediately after planting and mulched with 50mm depth of medium grade crushed mulch.

All trees to include rabbit guards, to be double staked with cross bar and tied using 1.5m long 10mm diameter ratchet free stake 10mm brace, rubber tie and spacer block. Stakes to extend more than 600mm above ground level. All trees within hardstanding/paths/visibility signs to be clear stem to 1.5m high unless otherwise specified. Planting and associated operations shall comply with BS2403, BS4428 and BS5537. Root barriers (RFB 1000 or equivalent) to be included adjacent to buildings and services where necessary.

Unless otherwise stated planting shall be carried out during the period of 1 Nov to 31 March when the ground is not frozen or waterlogged. If planting is required outside this period agreement shall be sought and all root plants shall be established with dormant grow roots. All specimens to be UK grown specimens from healthy, disease free stock and from reputable suppliers and NITA certified nurseries.

PROTECTION OF EXISTING VEGETATION TO BE RETAINED
 Existing trees to be retained shall be protected in accordance with BS5837, from commencement to completion of all works on site.

PLANTING IN THIS AREA SPECIFIED ON PAVILION PLANTING PLANS

REVISIONS

NO.	DATE	REVISION	BY	CHKD
1	02/03/2024	Final design and planting schedule	BS	BS
2	03/03/2024	Final design and planting schedule	BS	BS
3	04/03/2024	Final design and planting schedule	BS	BS
4	05/03/2024	Final design and planting schedule	BS	BS
5	06/03/2024	Final design and planting schedule	BS	BS
6	07/03/2024	Final design and planting schedule	BS	BS
7	08/03/2024	Final design and planting schedule	BS	BS
8	09/03/2024	Final design and planting schedule	BS	BS
9	10/03/2024	Final design and planting schedule	BS	BS
10	11/03/2024	Final design and planting schedule	BS	BS

aspect landscape planning

CLIENT
 Bankside, Longford Park
 Community Park Design - sheet 4 of 5

DRAWING NUMBER
 5205/CP-ASP2.4

SCALE
 1:500@A0

DATE
 OCT 2014

DRAWN
 BS

CHKD
 KJC

REVISION
 AA