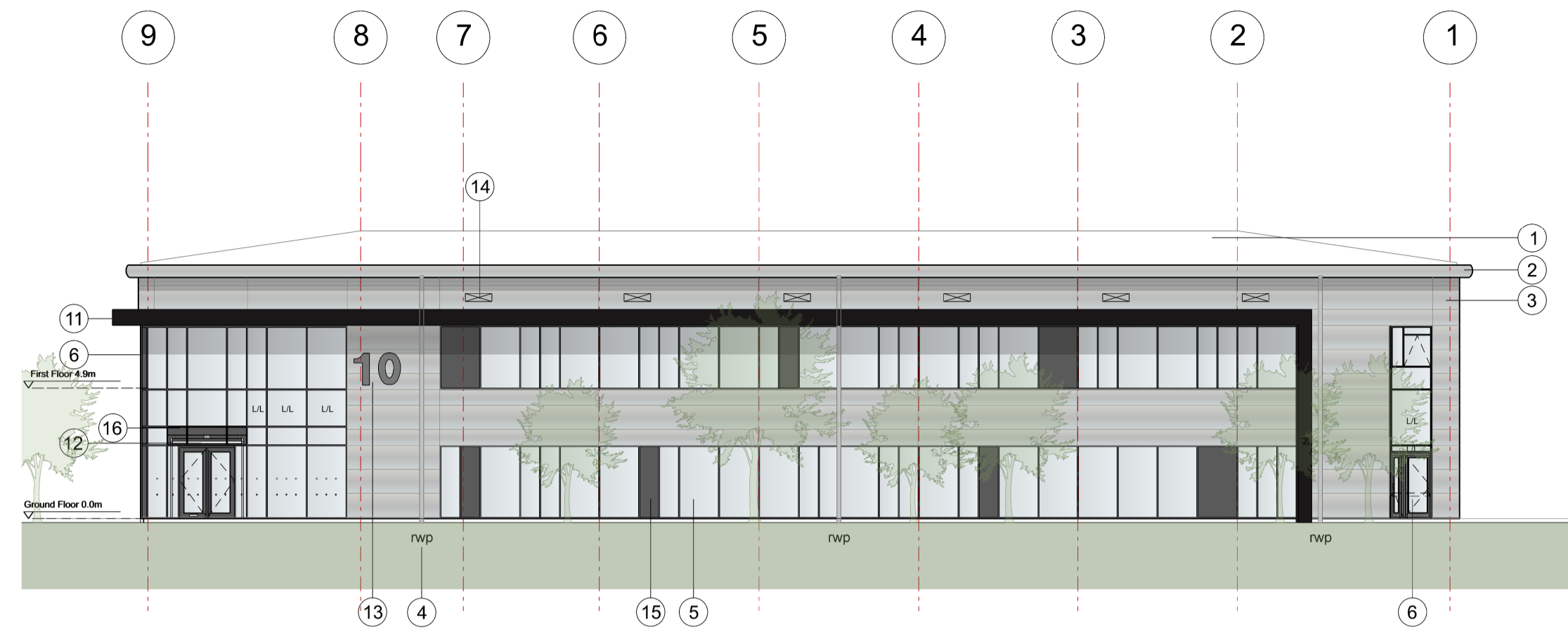
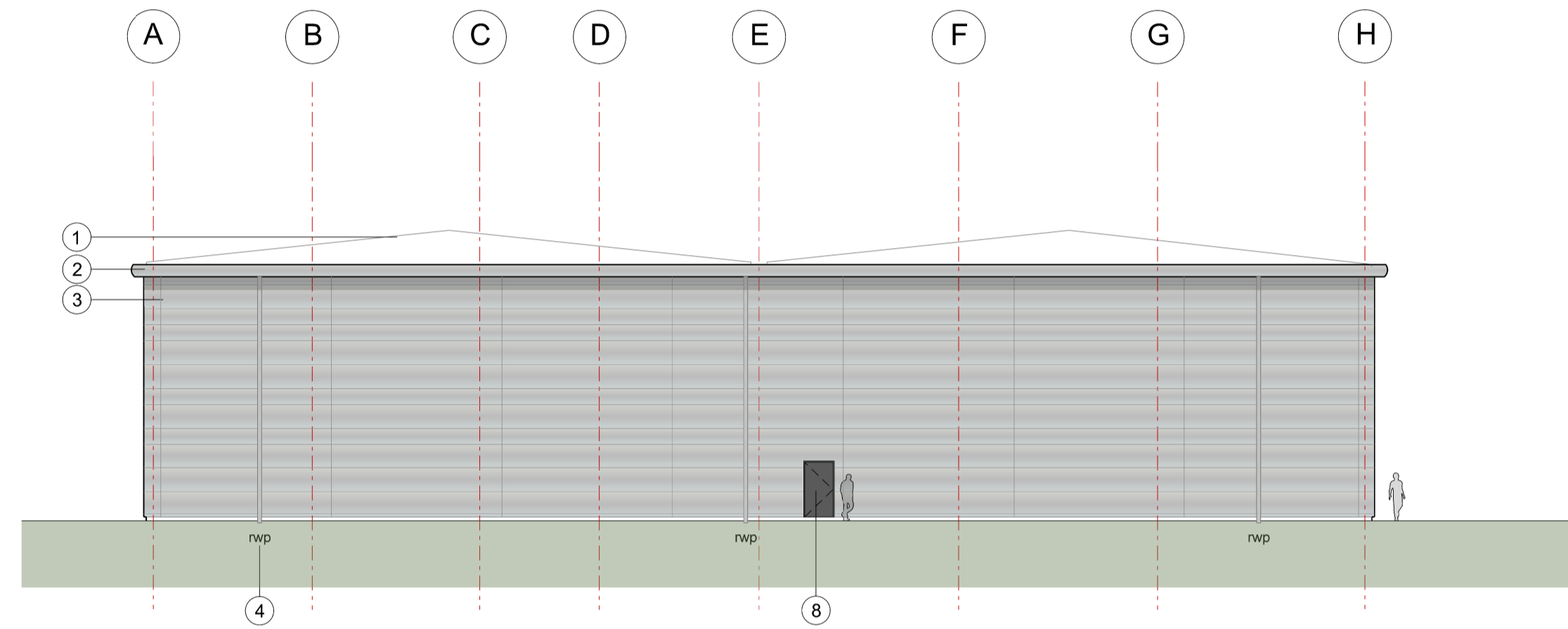


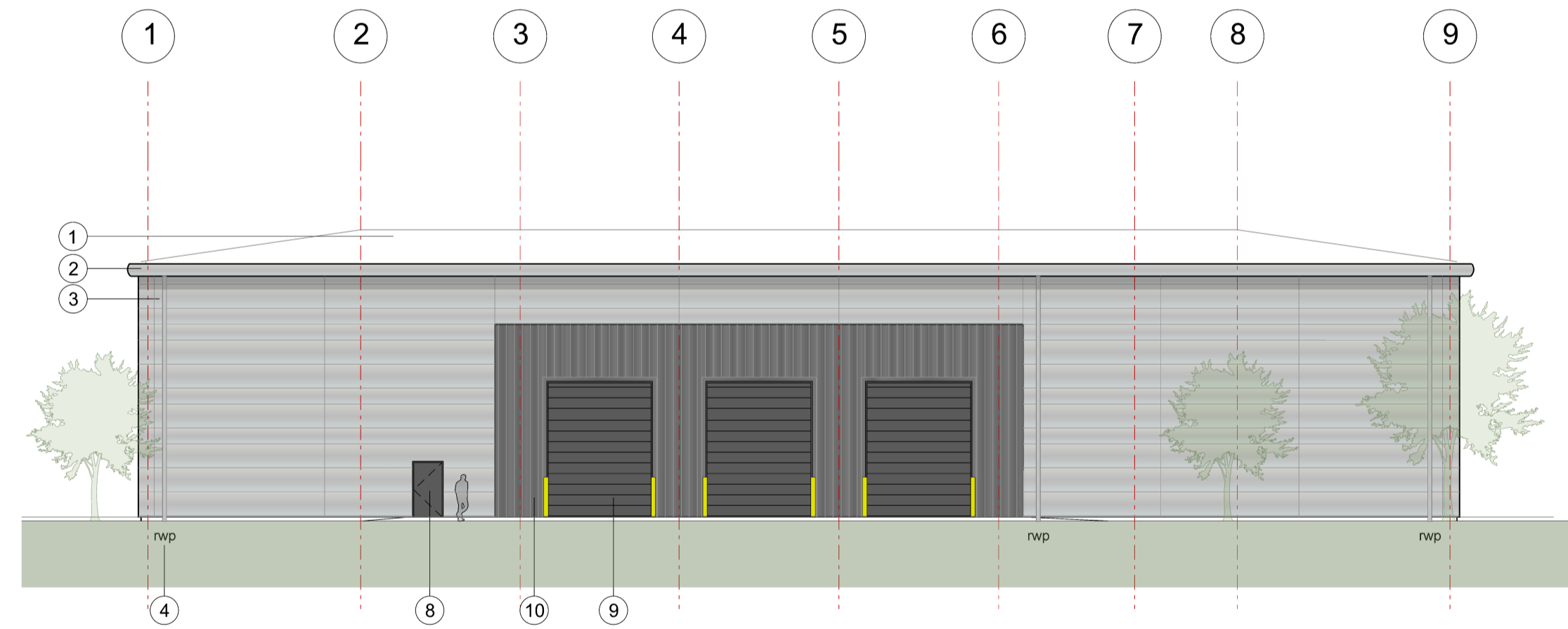
1  
104 Unit 10  
North East Elevation



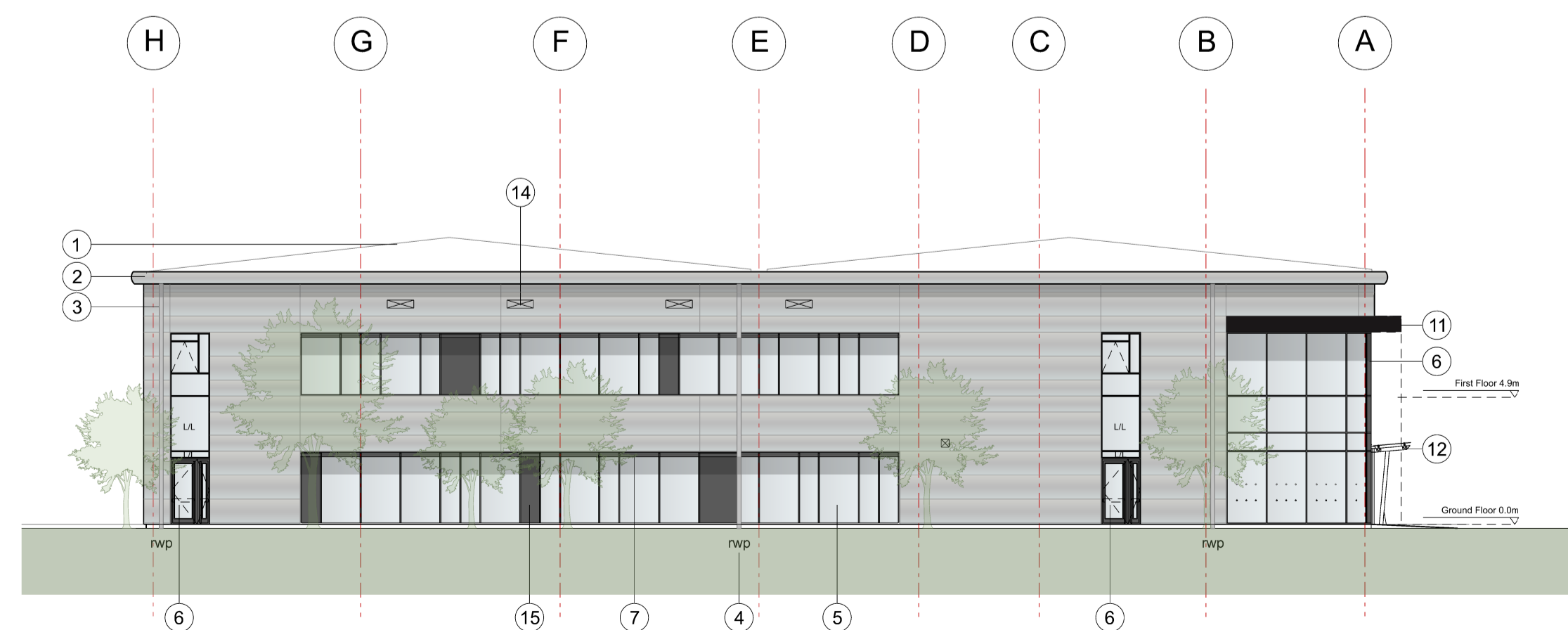
2  
104 Unit 10  
North West Elevation



3  
104 Unit 10  
South West Elevation



4  
104 Unit 10  
South East Elevation



KEY	
1	Built-up metal roof system Colour: HPS200 Ultra Goosewing Grey RAL 7038
2	Eaves and verge flashings. Colour: Sirius
3	Horizontal Microrib composite panel system Colorcoat Prisma - Sirius RAL 9006
4	Rainwater pipes. Colour: Sirius RAL 9006
5	PPC Aluminium double glazed windows. Colour: Anthracite RAL 7016
6	PPC Aluminium double glazed curtain walling and door frames. Colour: Anthracite RAL 7016
7	Brise Soleil, colour to match window frame
8	Steel fire escape doors. Colour: Anthracite RAL 7016
9	Loading doors. Colour: Anthracite RAL 7016
10	Vertical Trapezoidal built-up cladding system - Corus Colorcoat Prisma - Zeus
11	Feature canopy, colour: Black
12	Freestanding glass canopy, colour: Anthracite
13	Unit number
14	Louvers - colour to match cladding (to M&E consultant specification)
15	Decorative coloured glass feature insulated cassettes
16	Aluminium panel, colour: Anthracite
L/L	Look-a-like panels - obscured glass

Rev	Description	Chk	Date

Peer House  
8 -14 Verulam Street  
London WC1X 8LZ

tel +44(0)20 7400 2120

enquiries@cornisharchitects.com  
www.cornisharchitects.com

RIBA  
Chartered Practice

cornisharchitects

Project Title:  
CATALYST BICESTER RM5

Drawing Title:  
UNIT 10 ELEVATIONS

Drawing Status:  
TOWN PLANNING

Scale:  
0 2 metres 16

Drawn By: Scale: Date: Chk'd By:  
S K 1:200 @ A1 26/05/2022 C S

ALBION LAND

Drawing No. 22011 - TP - 104 Rev. -