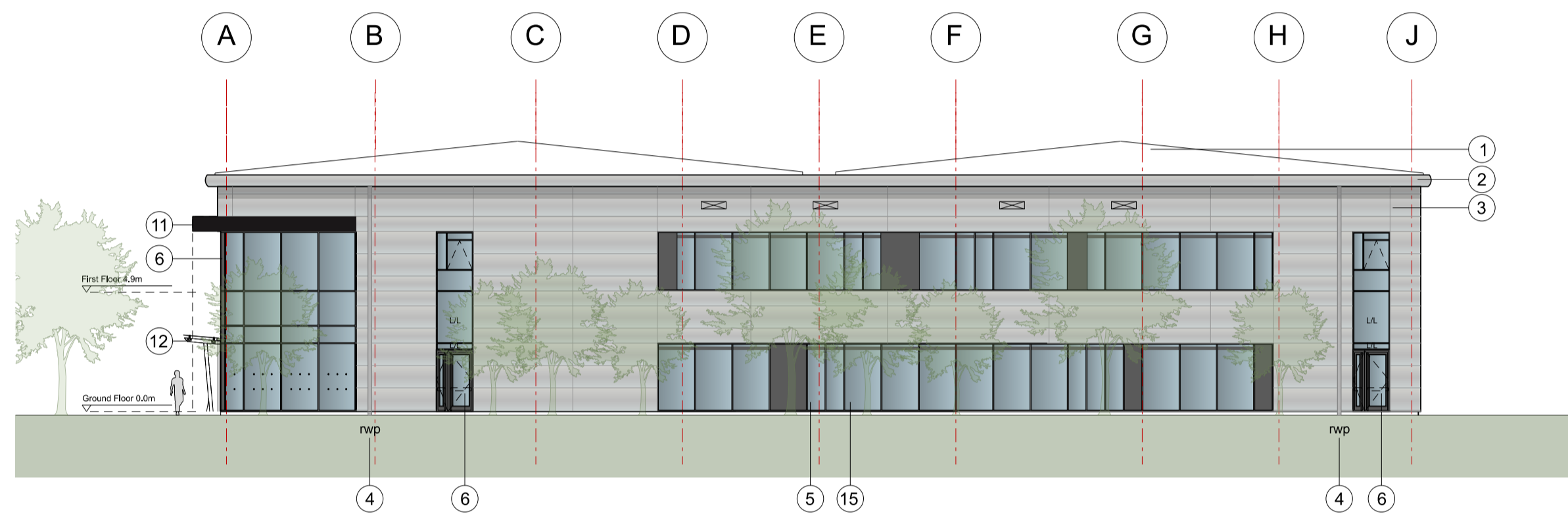
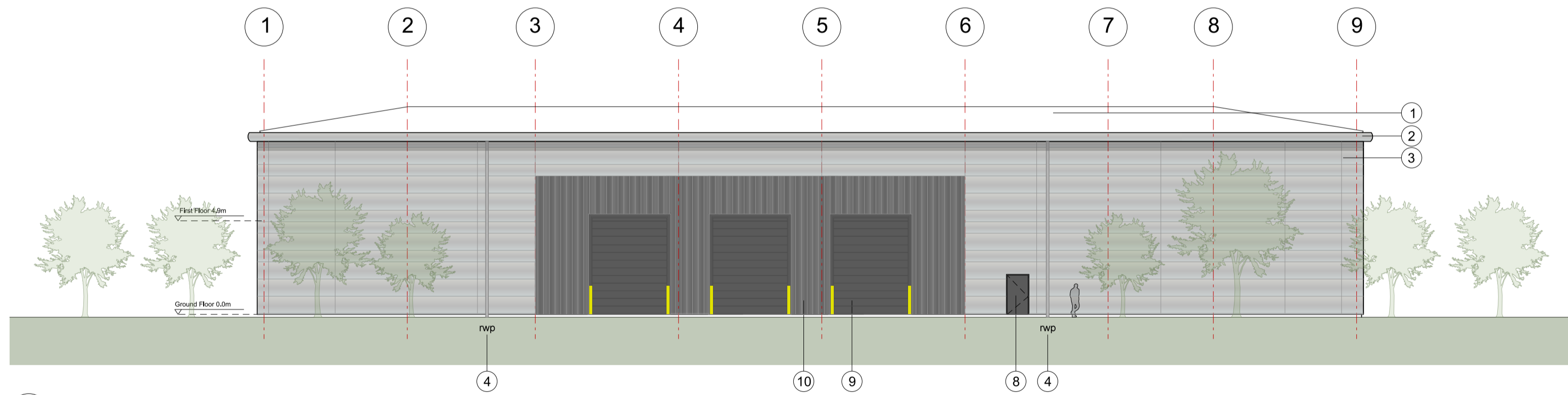


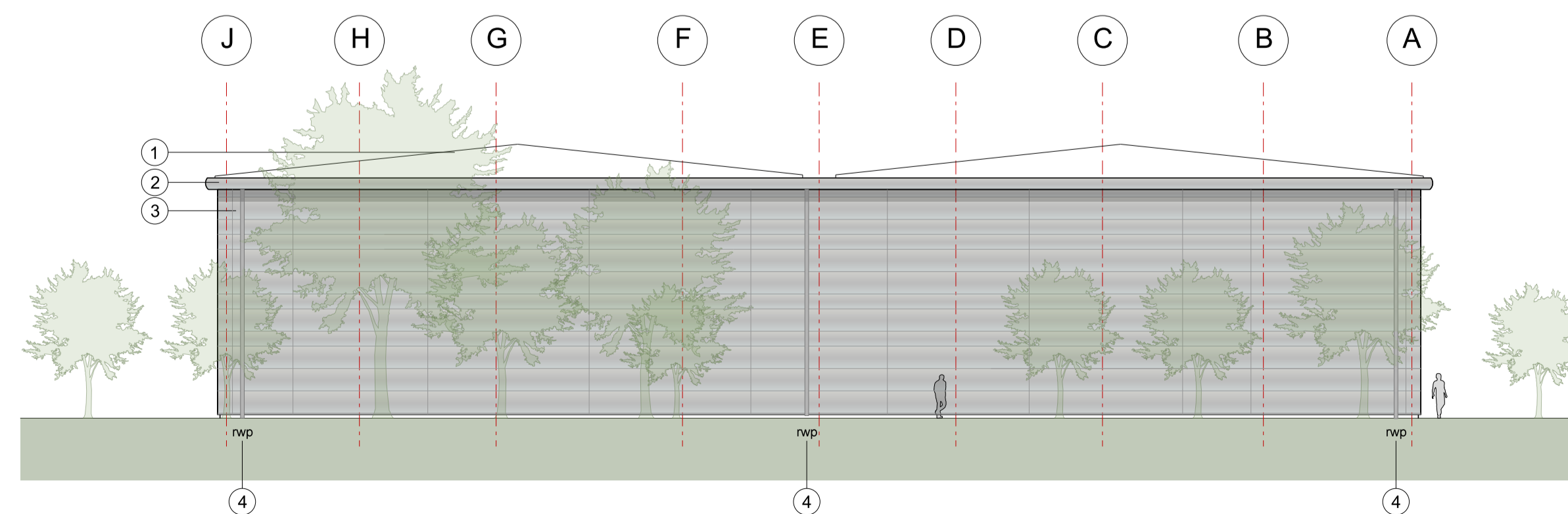
1 Unit 13  
112 North East Elevation



2 Unit 13  
112 North West Elevation



3 Unit 13  
112 South West Elevation



4 Unit 13  
112 South East Elevation

KEY	
1	Built-up metal roof system Colour: HPS200 Ultra Goosewing Grey RAL 7036
2	Eaves and verge flashings. Colour: Sirius
3	Horizontal Microrib composite panel system Colorcoat Prisma - Sirius RAL 9006
4	Rainwater pipes. Colour: Sirius RAL 9006
5	PPC Aluminium double glazed windows. Colour: Anthracite RAL 7016
6	PPC Aluminium double glazed curtain walling and door frames. Colour: Anthracite RAL 7016
7	Brise Soliel, colour to match window frame
8	Steel fire escape doors. Colour: Anthracite RAL 7016
9	Loading doors. Colour: Anthracite RAL 7016
10	Vertical Trapezoidal built-up cladding system - Corus Colorcoat Prisma - Zeus
11	Feature canopy, colour: Black
12	Freestanding glass canopy, colour: Anthracite
13	Unit number
14	Louvres - colour to match cladding (to M&E consultant specification)
15	Decorative coloured glass feature insulated cassettes
16	Aluminium panel, colour: Anthracite
L/L	Look-a-like panels - obscured glass

Rev	Description	Chk	Date

Peer House  
8 -14 Verulam Street  
London WC1X 8LZ  
tel +44(0)20 7400 2120  
enquiries@cornisharchitects.com  
www.cornisharchitects.com



Project Title:  
CATALYST BICESTER RM5

Drawing Title:  
UNIT 13 ELEVATIONS

Drawing Status:  
TOWN PLANNING

Scale:  
0 2 metres 16

Drawn By: Scale: Date: Chk'd By:  
C B 1:200 @ A1 30/05/2022 C S



Drawing No. Rev.  
22011 - TP - 112 -