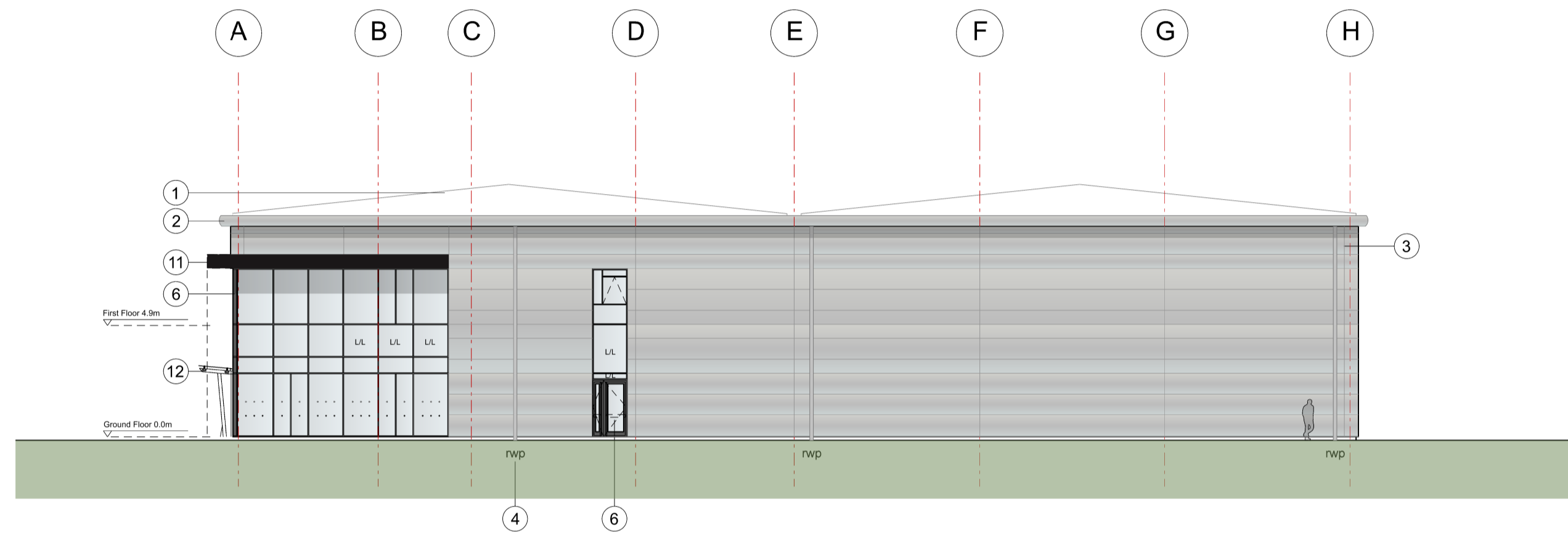
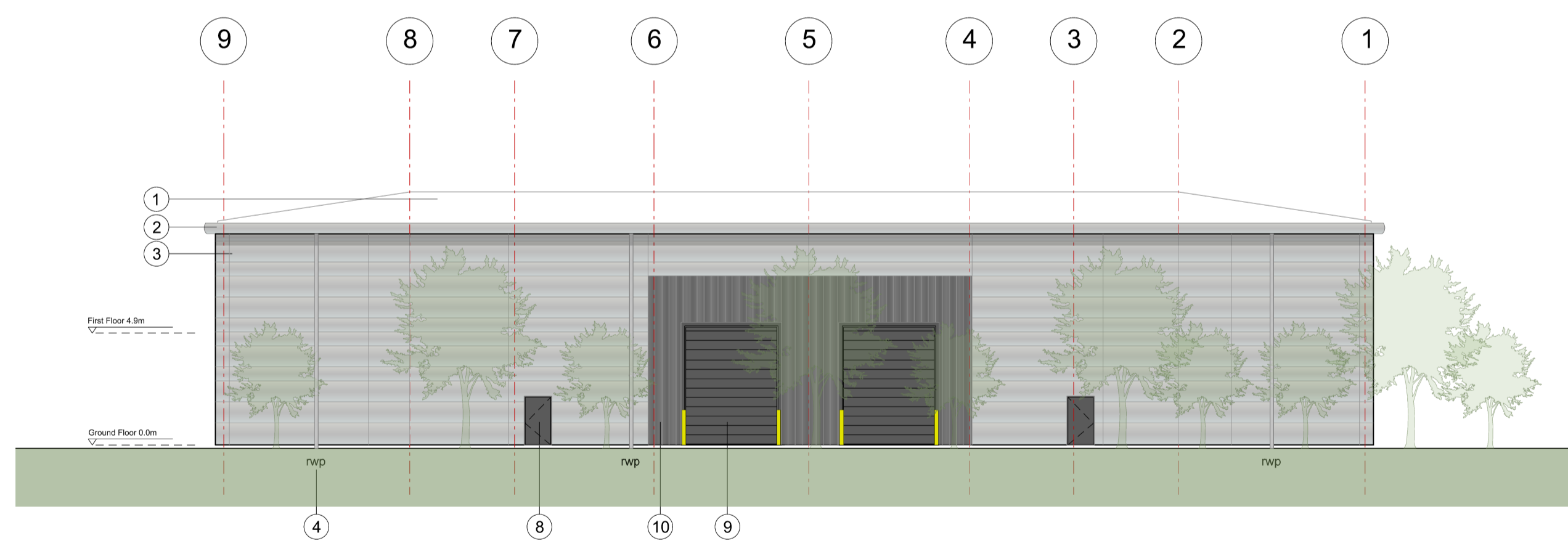




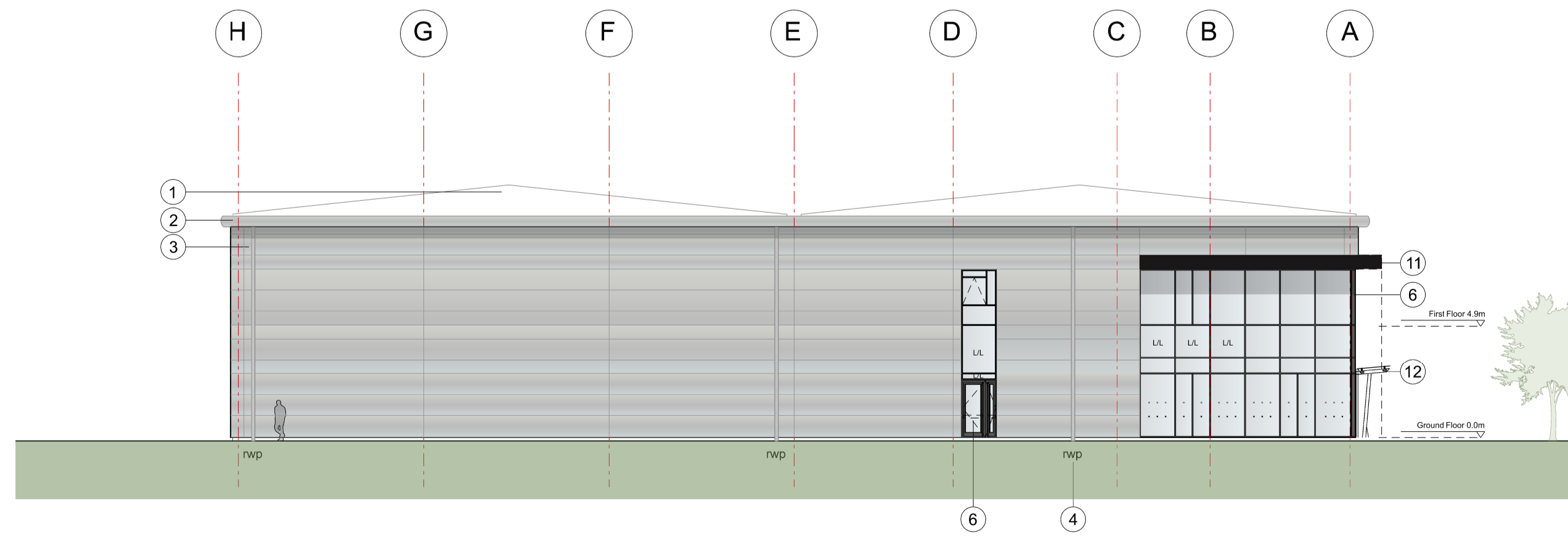
1 Unit 11-12
108 North East Elevation



2 Unit 11-12
108 North West Elevation



3 Unit 11-12
108 South West Elevation



4 Unit 11-12
108 South East Elevation

KEY	
1	Built-up metal roof system Colour: HPS200 Ultra Goosewing Grey RAL 7038
2	Eaves and verge flashings. Colour: Sirius
3	Horizontal Microrib composite panel system Colorcoat Prisma - Sirius RAL 9006
4	Rainwater pipes. Colour: Sirius RAL 9006
5	PPC Aluminium double glazed windows. Colour: Anthracite RAL 7016
6	PPC Aluminium double glazed curtain walling and door frames. Colour: Anthracite RAL 7016
7	Aluminium panel, colour: Anthracite
8	Steel fire escape doors. Colour: Anthracite RAL 7016
9	Loading doors. Colour: Anthracite RAL 7016
10	Vertical Trapezoidal built-up cladding system - Corus Colorcoat Prisma - Zeus
11	Feature canopy, colour: Black
12	Etched glass canopy supported off a steelwork frame, colour: Anthracite
13	Unit number
14	Louvers - colour to match cladding (to M&E consultant specification)
15	Decorative coloured glass feature insulated cassettes
L/L	Look-a-like panels - obscured glass

Rev	Description	Chk	Date

Peer House
8 -14 Verulam Street
London WC1X 8LZ

tel +44(0)20 7400 2120

enquiries@cornisharchitects.com
www.cornisharchitects.com

RIBA
Chartered Practice

cornisharchitects

Project Title:
CATALYST BICESTER RM5

Drawing Title:
UNIT 11-12 ELEVATIONS

Drawing Status:
TOWN PLANNING

Scale:
0 2 metres 16

Drawn By: Scale: Date: Chk'd By:
S K 1:200 @ A1 27/05/2022 C S

ALBION LAND

Drawing No. 22011 - TP - 108 Rev. -