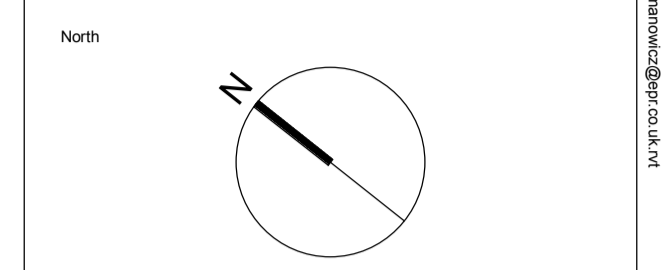


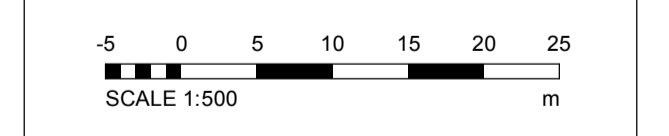
Keyplan



Notes:
 1. Do not scale
 2. Contractor to Check all dimensions and report omissions and errors to the Architect
 3. EPR Architects accepts no liability for use of this drawing by parties other than the party for whom it was prepared or for purposes other than those for which it was prepared.
 4. This drawing is issued in dwg/print format as an uncontrolled version to enable the recipient to prepare their own documents/drawings/models for which they are solely responsible. This drawing is based on project information current at the time of issue. EPR Architects Limited accepts no liability for any alterations or additions to or discrepancies arising out of any change to such project information that occurs to the information after it is issued by EPR Architects Limited.
 5. This drawing does not contain shared coordinates and is not issued for coordination purposes.

| No. | Revision | Date | Initial | Chk'd |
|-----|----------------------------------|----------|---------|-------|
| 3 | P03 - Planning Issue | 08.11.19 | LOG | AJ |
| 2 | P02 - Preliminary Planning Issue | 20.10.19 | LOG | AJ |
| 1 | P01 - Preliminary Planning Issue | 25.10.19 | LOG | CT |

Notes:
 1. This drawing has been prepared for planning application purposes only.
 2. EPR Architects accepts no liability for use of this drawing by parties other than the party for whom it was prepared or for purposes other than those for which it was prepared.
 3. Do not scale.
 4. This drawing is based on project information current at the time of issue. EPR Architects Limited accepts no liability for any alterations to or discrepancies arising out of any change to such project information that occurs to the information after it is issued by EPR Architects Limited.
 5. This drawing does not contain shared coordinates and is not issued for coordination purposes.
 6. Guestrooms layouts and furniture arrangement are indicative and for illustrative purposes only.



EPR Architects
 30 Milbank, London SW1P 4DU
 +44(0)20 7327800
 www.epr.co.uk

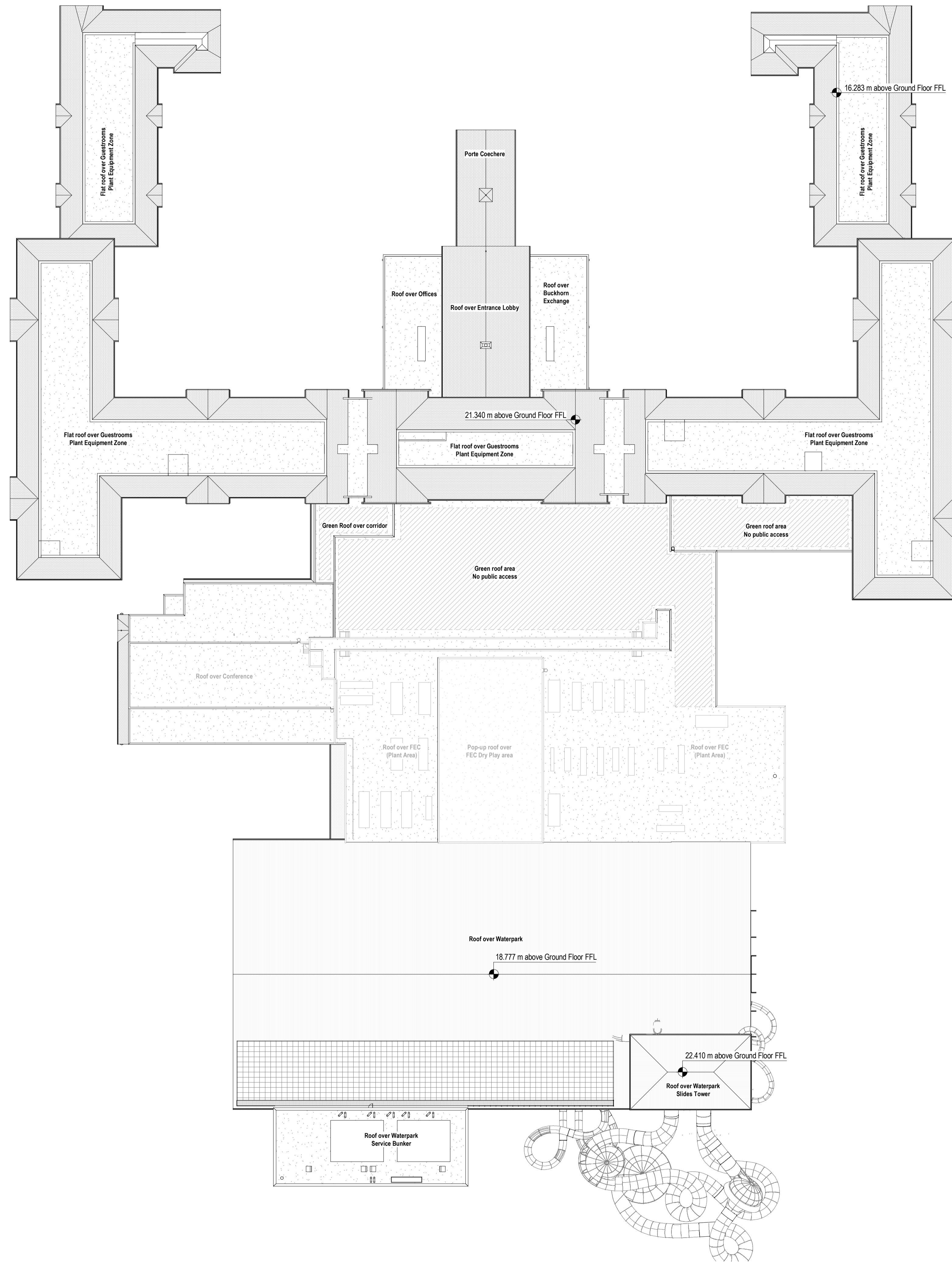
Proposed Great Wolf Lodge
 Chesterton, Bicester, Oxfordshire

Proposed Second Floor Plan

Scale @A1 Status Revision
 1:500 Planning 3

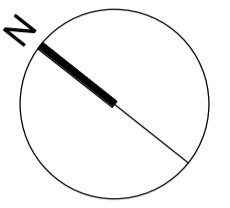
Project Code Originator Zone Level Type Role Class Number
 10875 - EPR - 00 - 02 - DR - A - TP-0202

0 - Rev: 03/19/10:51:51 EPR:ZAZZ:AZ:AC:CT:TP:02 - Milbank - Rev: 03/19/10:51:51



Keyplan

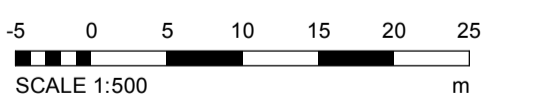
North



Notes:
 1. Do not scale
 2. Contractor to Check all dimensions and report omissions and errors to the Architect
 3. EPR Architects accepts no liability for use of this drawing by parties other than the party for whom it was prepared or for purposes other than those for which it was prepared.
 4. This drawing is issued in dwg/print format as an uncontrolled version to enable the recipient to prepare their own documents/drawings/models for which they are solely responsible. This drawing is based on project information current at the time of issue. EPR Architects Limited accepts no liability for any alterations or additions to or discrepancies arising out of any change to such project information that occurs to the information after it is issued by EPR Architects Limited.
 5. This drawing does not contain shared coordinates and is not issued for coordination purposes.

| No. | Revision | Date | Initial | Chk'd |
|-----|----------------------------------|----------|---------|-------|
| 3 | P03 - Planning Issue | 08.11.19 | LOG | AJ |
| 2 | P02 - Preliminary Planning Issue | 26.10.19 | LOG | AJ |
| 1 | P01 - Preliminary Planning Issue | 25.10.19 | LOG | CT |

Notes:
 1. This drawing has been prepared for planning application purposes only.
 2. EPR Architects accepts no liability for use of this drawing by parties other than the party for whom it was prepared or for purposes other than those for which it was prepared.
 3. Do not scale.
 4. This drawing is based on project information current at the time of issue. EPR Architects Limited accepts no liability for any alterations to or discrepancies arising out of any change to such project information that occurs to the information after it is issued by EPR Architects Limited.
 5. This drawing does not contain shared coordinates and is not issued for coordination purposes.



EPR Architects

30 Millbank, London SW1P 4DU
 +44(0)20 73227800
 www.epr.co.uk

Proposed Great Wolf Lodge
 Chesterton, Bicester, Oxfordshire

Proposed Roof Plan

| Scale | Status | Revision |
|-------|----------|----------|
| 1:500 | Planning | 3 |

| Project Code | Originator | Zone | Level | Type | Role | Class | Number |
|--|------------|------|-------|------|------|-------|--------|
| 10875 - EPR - 00 - 05 - DR - A - TP-0204 | | | | | | | |

D:\Revit\10875-05-DR-TP-0204-A-CDN\Title_Millbank_Roomover.dwg on 10/11/19

2019-11-08 14:41:53



Keyplan



Notes:
 1. Do not scale
 2. Contractor to Check all dimensions and report omissions and errors to the Architect
 3. EPR Architects accepts no liability for use of this drawing by parties other than the party for whom it was prepared or for purposes other than those for which it was prepared.
 4. This drawing is issued in dwg/print format as an uncontrolled version to enable the recipient to prepare their own documents/drawings/models for which they are solely responsible. This drawing is based on project information current at the time of issue. EPR Architects Limited accepts no liability for any alterations or additions to or discrepancies arising out of any change to such project information that occurs to the information after it is issued by EPR Architects Limited.
 5. This drawing does not contain shared coordinates and is not issued for coordination purposes.

| No. | Revision | Date | Initial | Chk'd |
|-----|--|----------|---------|-------|
| 4 | P04 - Planning Issue - Generator added | 25.11.19 | CT | AJ |
| 3 | P03 - Planning Issue | 06.11.19 | LOG | AJ |
| 2 | P02 - Preliminary Planning Issue | 20.10.19 | LOG | AJ |
| 1 | P01 - Preliminary Planning Issue | 25.10.19 | LOG | CT |

Notes:
 1. This drawing has been prepared for planning application purposes only.
 2. EPR Architects accepts no liability for use of this drawing by parties other than the party for whom it was prepared or for purposes other than those for which it was prepared.
 3. Landscape shown for illustrative purposes only; refer to Landscape Architect's for Landscape proposals for further details.
 4. Tree locations & existing trees beyond site perimeter - indicative - for illustrative purposes only.



EPR Architects
 30 Milbank, London SW1P 4DU
 +44(0)20 7327800
 www.epr.co.uk

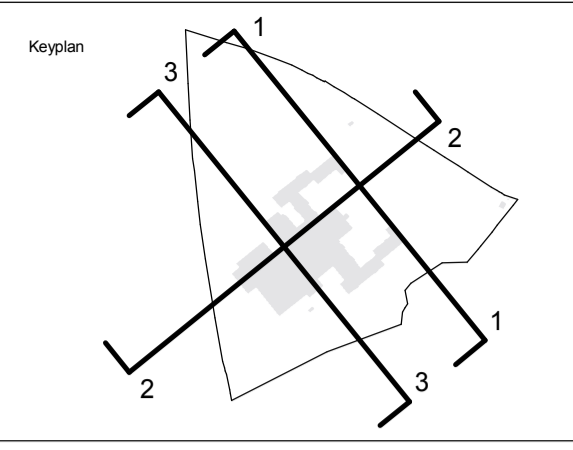
Proposed Great Wolf Lodge
 Chesterton, Bicester, Oxfordshire

Proposed Site Plan

Scale @A1 Status Revision
 1:1250 Planning 4

Project Code Originator Zone Level Type Role Class Number
 10875 - EPR - 00 - ZZ - DR - A - TP-0102

C:\Users\10875\Documents\EPR\10875-EPR-00-ZZ-DR-A-TP-0102.dwg, 25/11/2019 11:23:23



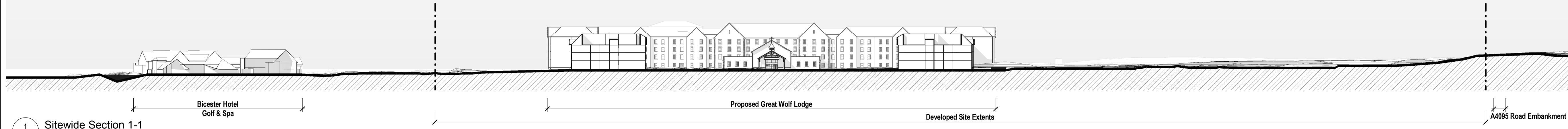
North

Notes:
 1. Do not scale
 2. Contractor to Check all dimensions and report omissions and errors to the Architect
 3. EPR Architects accepts no liability for use of this drawing by parties other than the party for whom it was prepared or for purposes other than those for which it was prepared.
 4. This drawing is issued in dwg/dgn format as an uncontrolled version to enable the recipient to prepare their own documents/drawings/models for which they are solely responsible. This drawing is based on project information current at the time of issue. EPR Architects Limited accepts no liability for any alterations or additions to or discrepancies arising out of any change to such project information that occurs to the information after it is issued by EPR Architects Limited.
 5. This drawing does not contain shared coordinates and is not issued for coordination purposes.

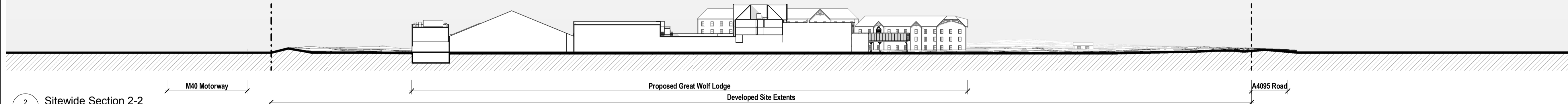
| | | | | |
|---|----------------------------------|----------|-----|----|
| 3 | P03 - Planning Issue | 08.11.19 | LOG | AJ |
| 2 | P02 - Preliminary Planning Issue | 26.10.19 | LOG | AJ |
| 1 | P01 - Preliminary Planning Issue | 25.10.19 | LOG | CT |

| No. | Revision | Date | Initial | Chk'd |
|-----|----------|------|---------|-------|
|-----|----------|------|---------|-------|

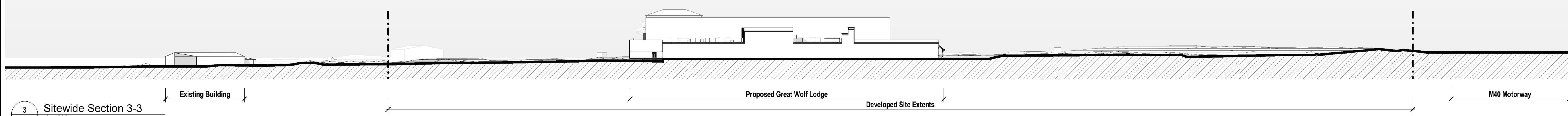
Notes:
 Drawing based upon information received from the Client:
 1. OS Map - file dated 2019-02-08
 2. Topographic survey - file dated 2019-04-12



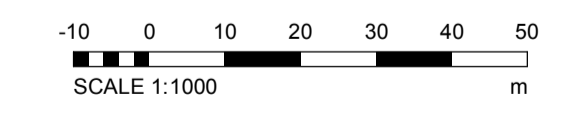
1 Sitewide Section 1-1
1:1000



2 Sitewide Section 2-2
1:1000



3 Sitewide Section 3-3
1:1000



EPR Architects
 30 Millbank, London SW1P 4DU
 +44(0)20 73278000
 www.epr.co.uk

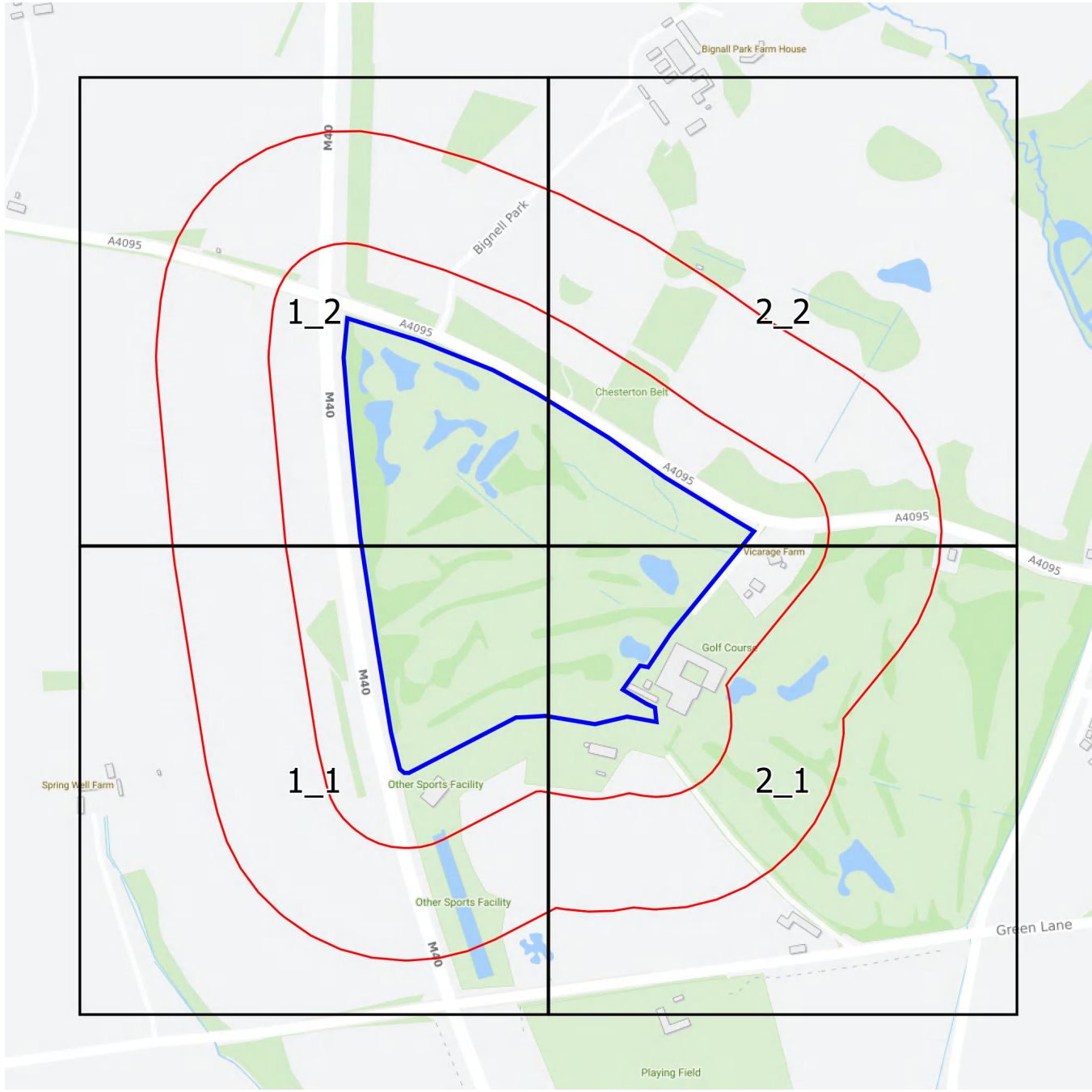
Proposed Great Wolf Lodge
 Chesterton, Bicester, Oxfordshire

Proposed Sitewide Sections
 Scale @A1 Status Revision
 As indicated Planning 3

| | | | | | | | |
|--|------------|------|-------|------|------|-------|--------|
| Project Code | Originator | Zone | Level | Type | Role | Class | Number |
| 10875 - EPR - 00 - ZZ - GS - A - TP - 0103 | | | | | | | |

APPENDIX B

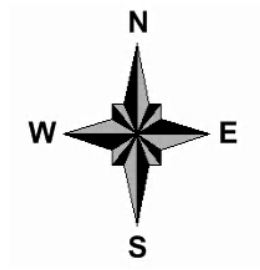
Historical Maps



Groundsure

INSIGHTS

1:2,500 Scale Grid Index





Site Details:

BICESTER HOTEL GOLF & SPA,
BICESTER HOTEL GOLF AND
COUNTRY CLUB, AKEMAN
STREET, CHESTERTON, OX26
1TE

Client Ref: CG39017
Report Ref: CGL01-8377865_LS_1_1
Grid Ref: 454685, 221364

Map Name: County Series

Map date: 1877

Scale: 1:2,500

Printed at: 1:2,500



Surveyed 1877
Revised 1877
Edition N/A
Copyright N/A
Levelled N/A



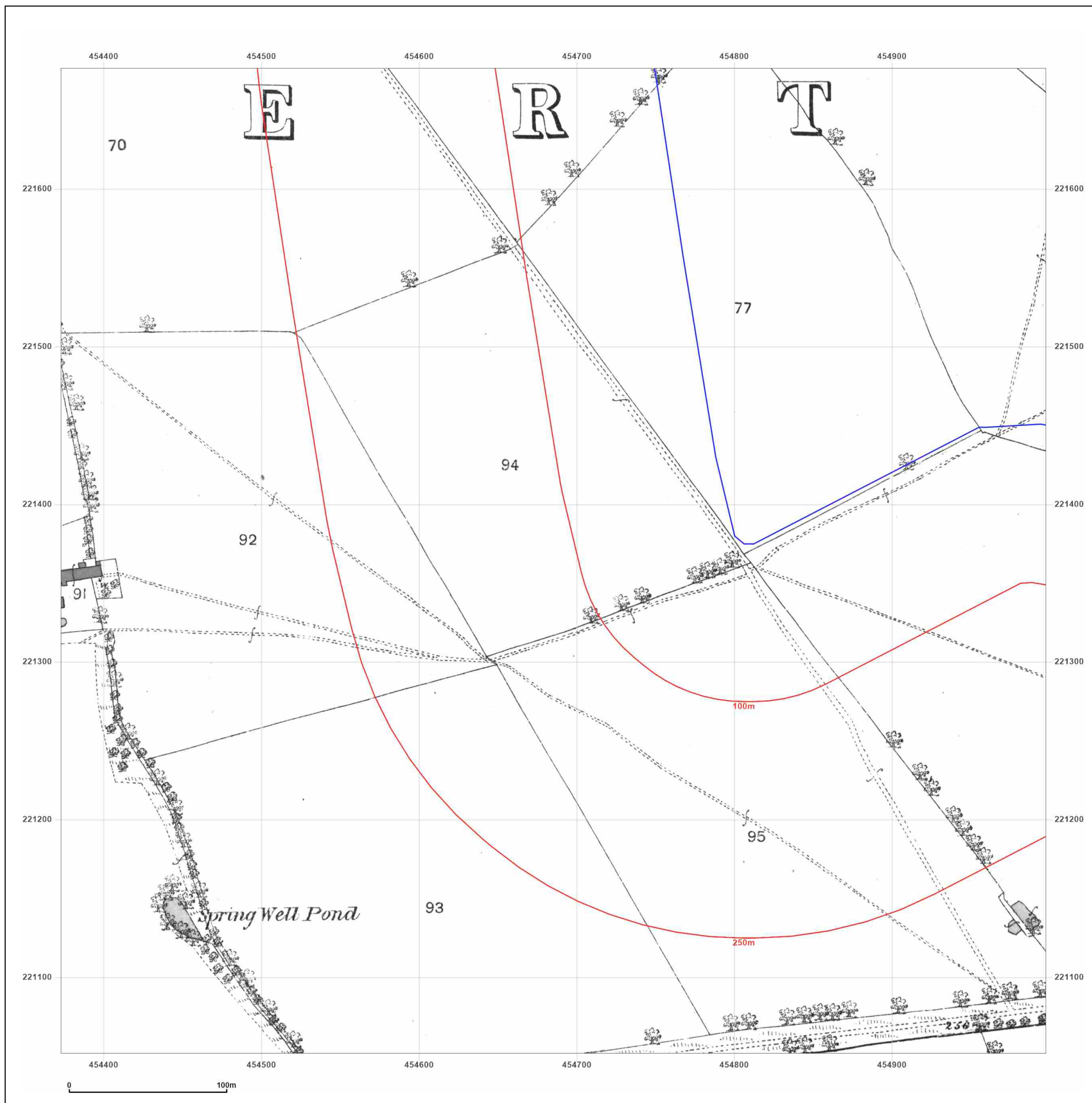
Produced by
Groundsure Insights
T: 08444 159000
E: info@groundsure.com
W: www.groundsure.com

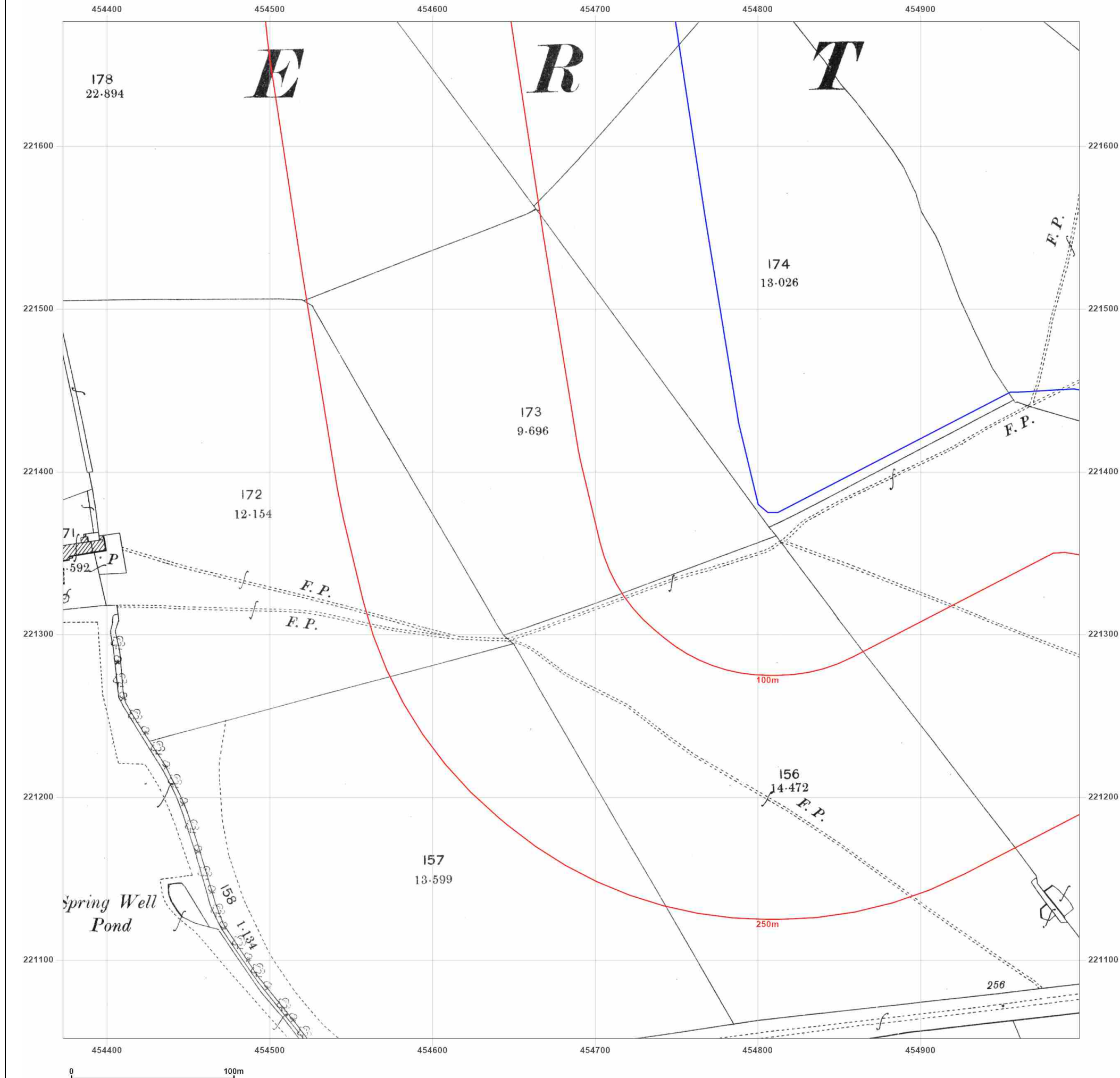


© Crown copyright and database rights 2018 Ordnance Survey 100035207

Production date: 02 December 2021

Map legend available at:
www.groundsure.com/sites/default/files/groundsure_legend.pdf





Site Details:

BICESTER HOTEL GOLF & SPA,
 BICESTER HOTEL GOLF AND
 COUNTRY CLUB, AKEMAN
 STREET, CHESTERTON, OX26
 1TE

Client Ref: CG39017
Report Ref: CGL01-8377865_LS_1_1
Grid Ref: 454685, 221364

Map Name: County Series

Map date: 1898

Scale: 1:2,500

Printed at: 1:2,500



Surveyed 1898
 Revised 1898
 Edition N/A
 Copyright N/A
 Levelled N/A



Produced by
 Groundsure Insights
 T: 08444 159000
 E: info@groundsure.com
 W: www.groundsure.com



© Crown copyright and database rights 2018 Ordnance Survey 100035207

Production date: 02 December 2021

Map legend available at:
www.groundsure.com/sites/default/files/groundsure_legend.pdf

Site Details:

BICESTER HOTEL GOLF & SPA,
BICESTER HOTEL GOLF AND
COUNTRY CLUB, AKEMAN
STREET, CHESTERTON, OX26
1TE

Client Ref: CG39017
Report Ref: CGL01-8377865_LS_1_1
Grid Ref: 454685, 221364

Map Name: County Series

Map date: 1922

Scale: 1:2,500

Printed at: 1:2,500



Surveyed 1922
Revised 1922
Edition N/A
Copyright N/A
Levelled N/A



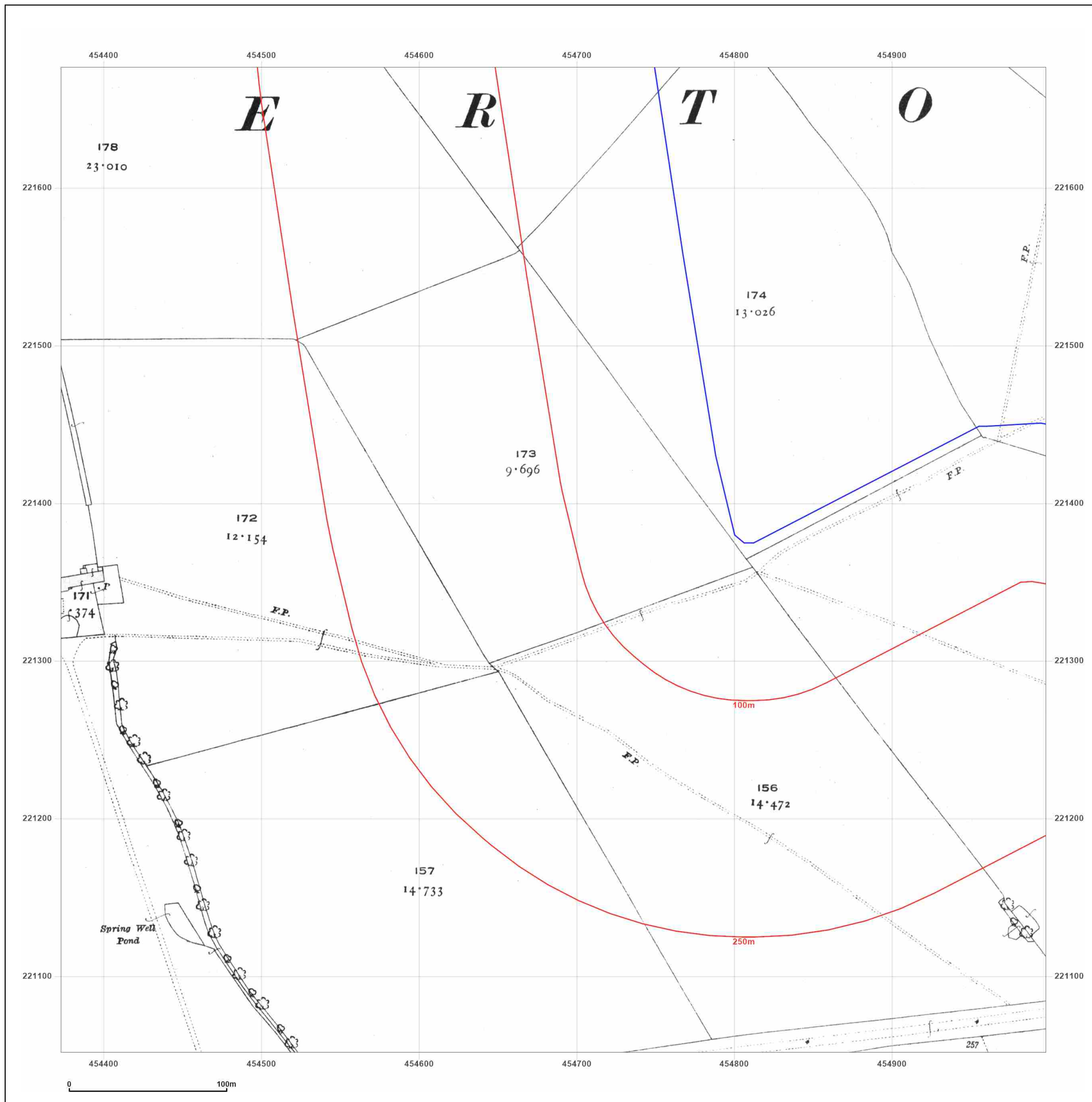
Produced by
Groundsure Insights
T: 08444 159000
E: info@groundsure.com
W: www.groundsure.com



© Crown copyright and database rights 2018 Ordnance Survey 100035207

Production date: 02 December 2021

Map legend available at:
www.groundsure.com/sites/default/files/groundsure_legend.pdf



Site Details:

BICESTER HOTEL GOLF & SPA,
BICESTER HOTEL GOLF AND
COUNTRY CLUB, AKEMAN
STREET, CHESTERTON, OX26
1TE

Client Ref: CG39017
Report Ref: CGL01-8377865_LS_1_1
Grid Ref: 454685, 221364

Map Name: National Grid

Map date: 1968

Scale: 1:2,500

Printed at: 1:2,500



Surveyed 1966
Revised 1966
Edition N/A
Copyright 1968
Levelled 1951



Produced by
Groundsure Insights
T: 08444 159000
E: info@groundsure.com
W: www.groundsure.com



© Crown copyright and database rights 2018 Ordnance Survey 100035207

Production date: 02 December 2021

Map legend available at:
www.groundsure.com/sites/default/files/groundsure_legend.pdf

