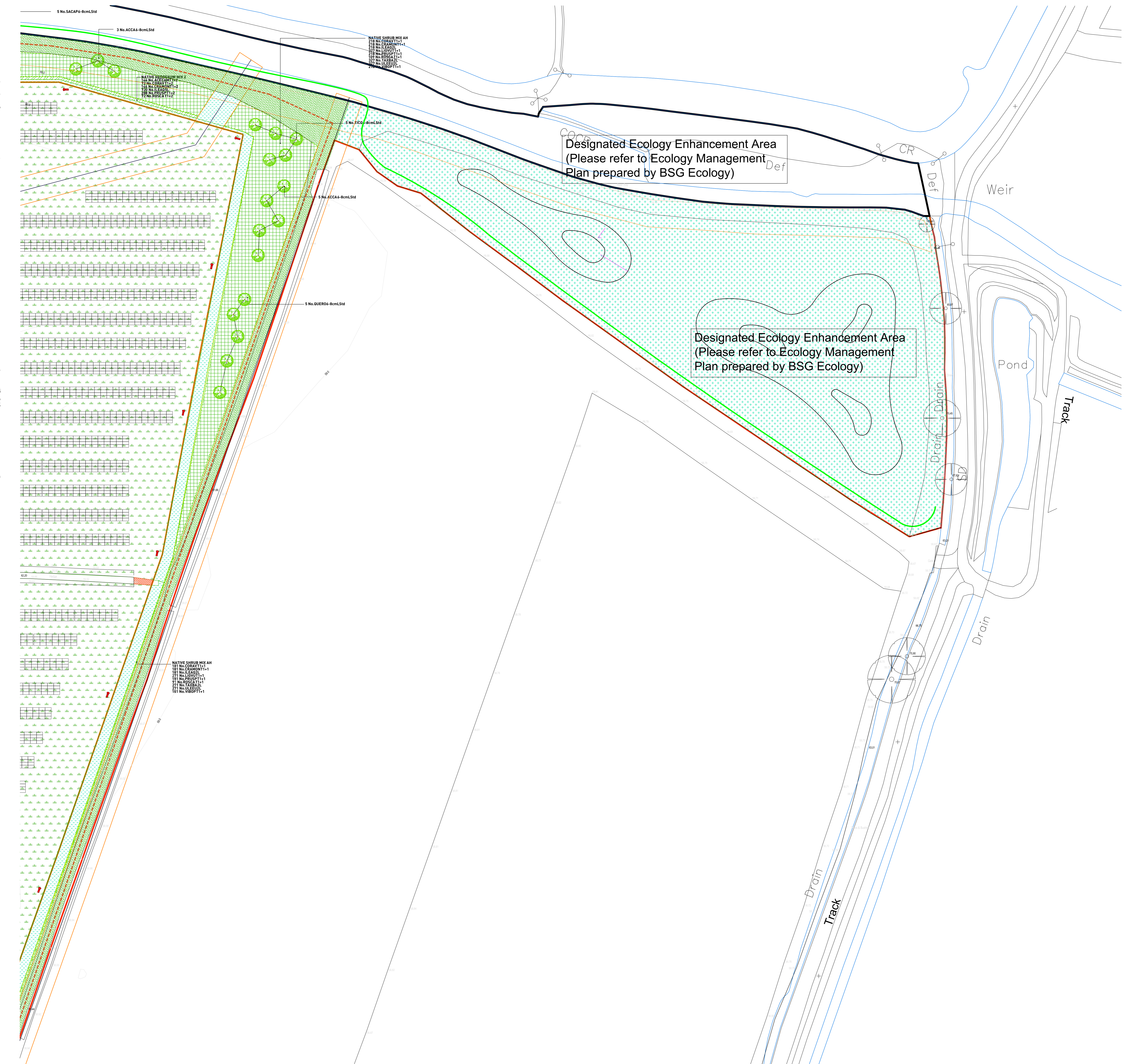


IMPLEMENTATION AND MAINTENANCE GUIDELINES

- GENERAL:**
 - All plants and materials shall be specified in accordance with the National Plant Specification. Suppliers names shall be specified in the Bill of Materials (BOM) and shall be subject to approval by the Client.
 - Plants shall be specified in accordance with the National Plant Specification. Suppliers names shall be specified in the Bill of Materials (BOM) and shall be subject to approval by the Client.
 - Plants shall be specified in accordance with the National Plant Specification. Suppliers names shall be specified in the Bill of Materials (BOM) and shall be subject to approval by the Client.
- TOPSOIL:**
 - Topsoil shall be specified in accordance with the National Plant Specification. Suppliers names shall be specified in the Bill of Materials (BOM) and shall be subject to approval by the Client.
- PLANTING:**
 - Plants shall be specified in accordance with the National Plant Specification. Suppliers names shall be specified in the Bill of Materials (BOM) and shall be subject to approval by the Client.
- WATERING:**
 - Watering shall be specified in accordance with the National Plant Specification. Suppliers names shall be specified in the Bill of Materials (BOM) and shall be subject to approval by the Client.
- WEEDING:**
 - Weeding shall be specified in accordance with the National Plant Specification. Suppliers names shall be specified in the Bill of Materials (BOM) and shall be subject to approval by the Client.
- MAINTENANCE:**
 - Maintenance shall be specified in accordance with the National Plant Specification. Suppliers names shall be specified in the Bill of Materials (BOM) and shall be subject to approval by the Client.
- MONITORING:**
 - Monitoring shall be specified in accordance with the National Plant Specification. Suppliers names shall be specified in the Bill of Materials (BOM) and shall be subject to approval by the Client.
- REPORTING:**
 - Reporting shall be specified in accordance with the National Plant Specification. Suppliers names shall be specified in the Bill of Materials (BOM) and shall be subject to approval by the Client.
- CONTRACTOR:**
 - The contractor shall be responsible for the implementation and maintenance of the landscape plan.
- CLIENT:**
 - The client shall be responsible for the approval of the landscape plan.
- DESIGNER:**
 - The designer shall be responsible for the preparation of the landscape plan.



PLANT SCHEDULE

PROPOSED SPECIES	COMMON NAME	SUPPLY SPECIFICATION	HEIGHT (CM)	BIRTH	OFF (%)
ACCA	Acer campestre	Common Maple	L56	200-250cm 6-8cm	77
ALG	Alnus glutinosa	Common Alder	L56	200-250cm 6-8cm	43
LEAD	Ligustrum vulgare	Common Ligustrum	S16	200-250cm 6-8cm	29
PNUS	Prunus avestris	Scots Pine	RB	200-250cm 8-10cm	38
PRUS	Prunus vulgaris	Common Wild Cherry	L56	200-250cm 6-8cm	14
QUERO	Quercus robur	Common Oak	L56	200-250cm 6-8cm	67
SALIC	Salix caprea	Goat willow	L56	200-250cm 6-8cm	35
TAXA	Taxus baccata	Common Yew	RB	200-250cm 6-10cm	38
TILI	Tilia cordata	Littleleaf Linden	L56	200-250cm 6-8cm	69

PROPOSED NATIVE WOODLAND MIXTURES (NATIVE MIXES)

MIX NAME	ABBV	SPECIES	SUPPLY HEIGHT (CM)	CENTRES (M)	MIX %	OFF (%)
NATIVE HEDGELOW MIX EASEMENT	ODRAW	Ornithogalum ovifolium	T1+1 60-80cm	0.30m Double Staggered	0.25m offset	208 7
NATIVE HEDGELOW MIX EASEMENT	LOUO	Ligustrum vulgare	T1+1 60-80cm	0.30m Double Staggered	0.25m offset	308 10
NATIVE HEDGELOW MIX EASEMENT	PRUSP	Prunus spinosa	T1+1 60-80cm	0.30m Double Staggered	0.25m offset	308 10
NATIVE HEDGELOW MIX EASEMENT	SPAL	Symphoricarpos albus	T1+1 60-80cm	0.30m Double Staggered	0.25m offset	208 7
NATIVE HEDGELOW MIX Z	ACCEAM	Acer campestre	T1+2 175-200cm 0.30m Double Staggered	0.25m offset	105 1019	
NATIVE HEDGELOW MIX Z	ODRAW	Ornithogalum ovifolium	T1+2 175-200cm 0.30m Double Staggered	0.25m offset	508 5019	
NATIVE HEDGELOW MIX Z	ODRAW	Ornithogalum ovifolium	T1+2 175-200cm 0.30m Double Staggered	0.25m offset	105 1019	
NATIVE HEDGELOW MIX Z	PRUSP	Prunus spinosa	T1+2 175-200cm 0.30m Double Staggered	0.25m offset	208 2033	
NATIVE HEDGELOW MIX Z	ROSCA	Rosa canina	T1+2 175-200cm 0.30m Double Staggered	0.25m offset	508 512	

PROPOSED NATIVE SHRUB MIXES

MIX NAME	ABBV	SPECIES	SUPPLY HEIGHT (CM)	HABIT	CENTRES (M)	MIX %	OFF (%)
NATIVE SHRUB MIX AH	CORRH	Coriaria oviflora	T1+1 60-80cm	Transplant	10m	2454	-
NATIVE SHRUB MIX AH	CRAMON	Crotaegus monogyna	T1+1 60-80cm	Transplant	10m	2454	-
NATIVE SHRUB MIX AH	LEAD	Ilex aquifolium	T1+1 60-80cm	Buaty	10m	2454	-
NATIVE SHRUB MIX AH	LEAD	Ilex aquifolium	T1+1 60-80cm	Transplant	10m	2454	-
NATIVE SHRUB MIX AH	PRUSP	Prunus spinosa	T1+1 60-80cm	Transplant	10m	2454	-
NATIVE SHRUB MIX AH	ROSCA	Rosa canina	T1+1 60-80cm	Transplant	10m	2454	-
NATIVE SHRUB MIX AH	TAXA	Taxus baccata	ZL	30-40cm	Buaty	10m	3676
NATIVE SHRUB MIX AH	LEUO	Ulex europaeus	ZL	30-40cm	Buaty	10m	3676
NATIVE SHRUB MIX AH	VBOP	Viburnum opulus	T1+1 60-80cm	Transplant	10m	2454	-
NATIVE SHRUB MIX EASEMENT C	BERICAN	Berberis canadensis	ZL	30-40cm	10m	405 24	
NATIVE SHRUB MIX EASEMENT C	EUCEPS	Eurotyum europaeus	ZL	40-60cm	10m	305 26	
NATIVE SHRUB MIX EASEMENT C	VBOP	Viburnum opulus	ZL	60-80cm	10m	305 26	

PROPOSED WILDLAND MEADOW (or similar approved)

MIX NAME	SEED MIX SUPPLIER	AREA	DENSITY
DM3 - Special Gen. Purpose Meadow	Emergo	26362.024m ²	4g/m ²

MEADOW GRASS MIXTURE FOR WET SOILS (or similar approved) - Copy

MIX NAME	SEED MIX SUPPLIER	AREA	DENSITY
ES8 - MEADOW GRASS MIXTURE FOR WET SOILS	Emergo	30900.7264m ²	5g/m ²

FINE GRASSLAND MIXTURE (or similar approved) - Copy

MIX NAME	SEED MIX SUPPLIER	AREA	DENSITY
ES2 - FINE GRASSLAND MIXTURE	Emergo	35945.6476m ²	2g/m ²

PROPOSED TURTLE DOME MIXTURE (or similar approved)

SPECIES	MIX (%)
Early English common vetch	20%
Early red fescue	20%
Early white clover	20%
Black medick	20%
Early red clover	20%
Famulium	1%

SEED MIX SUPPLIER: www.kingspro.co.uk
AREA: 166.136 sqm
DENSITY: 1g/m²

KEY

- Site boundary
- Existing trees and vegetation to be retained
- Existing trees and vegetation to be removed
- Existing grassland to be retained
- Soft landscape proposals (Refer to plant schedule for details)
- Existing public right of way
- Existing electricity pylons and powerlines (11kv)
- Existing electricity pylons and powerlines (33kv)
- Existing waterbodies
- Proposed perimeter fencing 2.1m high
- Proposed 4m wide EM3 meadow mixture buffer around perimeter fencing
- Proposed 1m wide EM3 meadow mixture buffer around perimeter fencing
- Proposed location of solar modules
- Proposed operational service tracks - access from NOKE village utilising existing agricultural access track
- Spaes cabin
- Inverters and associated infrastructure
- CCTV cameras
- Grid connection point
- Underground DNO cable route
- Permissive footpath route
- Indicative permanent wetland habitat (The max depth to be 600mm and depths vary throughout between the islands at varying depths, the gradient to be 1:20, subject to engineer's detailed design)
- Timber footbridge (1m wide hardwood timber footbridge with handrails and anti slip surface to comply with BS 5400, BS 5268 & BS 6100:2011. Bridge span to be determined by bridge engineer. As supplied by CTS bridges or similar approved manufacturer.)



SHEET LOCATION PLAN
NTS

