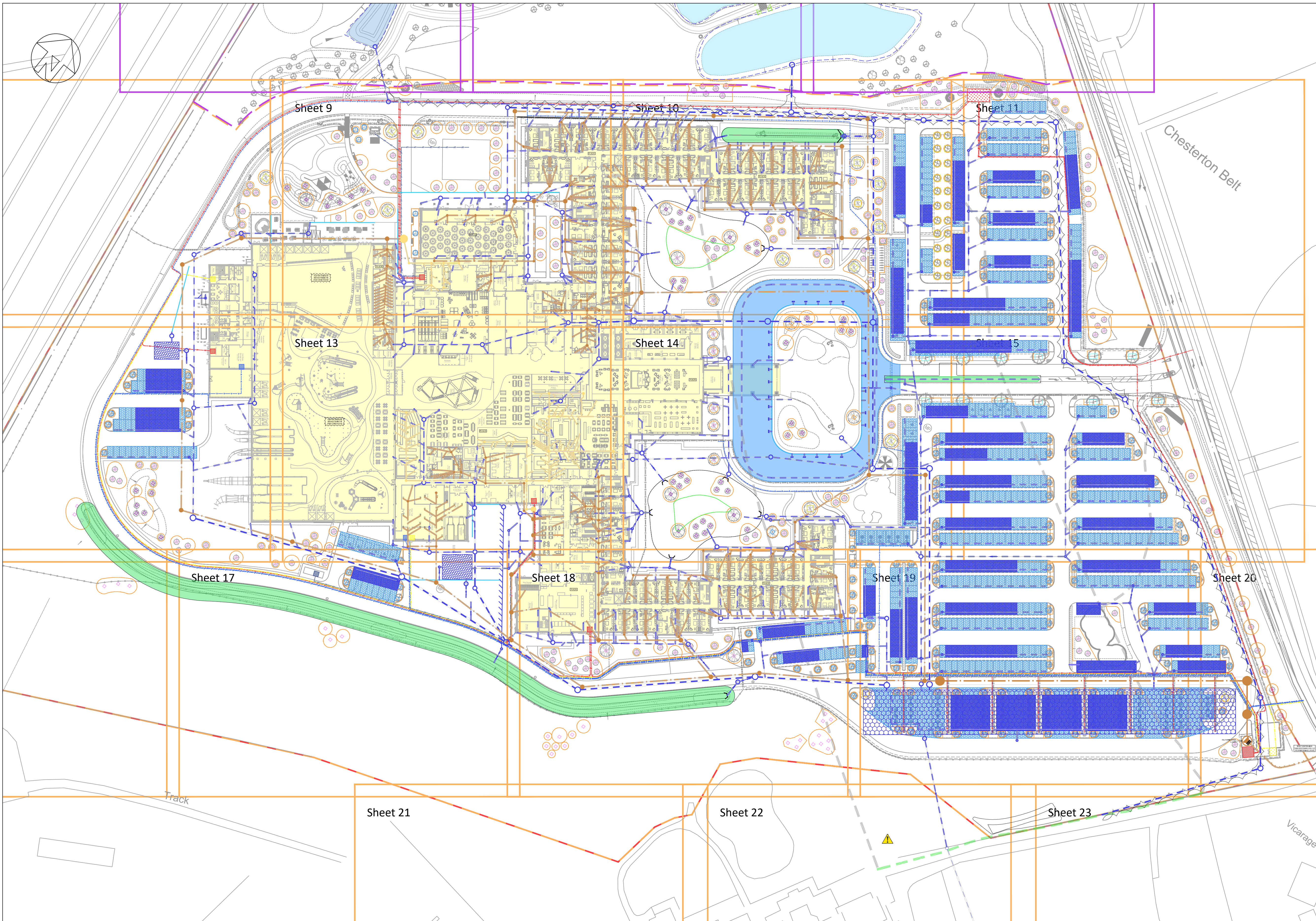


- NOTES
1. ALL BELOW GROUND UTILITIES ARE TAKEN FROM HOARE LEA UTILITIES DRAWINGS.
 2. PROPOSED TREE ROOT ZONES ARE TAKEN FROM BMD SOILING PLANS.
 3. TREE ROOT PROTECTION ZONES ARE TAKEN FROM THE ARBORICULTURALIST DRAWING.
 4. FOR DETAILS OF PROPOSED BELOW GROUND DRAINAGE REFER TO ELLIOTT WOOD 1000 SERIES DRAWINGS.



This drawing is to be read in conjunction with all relevant architects, engineers and specialists drawings and specifications.
Do not scale from this drawing.

LEGEND	
	EXISTING BUILDING
	PROPOSED BUILDING
	GAS SUPPLY ROUTE
	COMMUNICATIONS CABLE ROUTE
	WATER SUPPLY ROUTE
	HIGH VOLTAGE ELECTRICITY SUPPLY
	LOW VOLTAGE ELECTRICITY SUPPLY
	TREE ROOT AREA
	TREE PIT 1000x1000
	TREE PIT 1000x1000 SLOPE
	TREE PIT 1500x1500
	TREE PIT 2500x2500
	TREE PIT 1500x1200
	TREE PIT 2000x3000
	PROPOSED SURFACE WATER
	PROPOSED FOUL WATER

NOT FOR CONSTRUCTION

rev	sc	date	by	chk	description
P3	S2	30.03.22	HHu	PDa	RIBA 3 Issue
P2	S2	18.02.22	HHu	PDa	RIBA 3 Part 1 Issue
P1	S2	01.12.21	MAs	PDa	Issued for information

Drawing title
Combined Services Drawing Site Wide Overview

scale (s) 1:750@ A1; 1:1500@ A3

date November 2021

drawn MAs

elliottwood engineering a bettersociety

Elliott Wood Partnership Ltd
Central London • Wimbledon • Nottingham
Consulting Structural and Civil Engineers
(020) 7499 5688 • elliottwood.co.uk

Project Proposed Great Wolf Lodge, Chesterton, Bicester, Oxfordshire	
Drawing status Preliminary	Status Revision S2 P3
Project no. Originator Zone Level Type Role drg no. 2180501-EWP-ZZ-EX-DR-C-6999	