

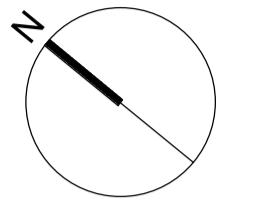
Key



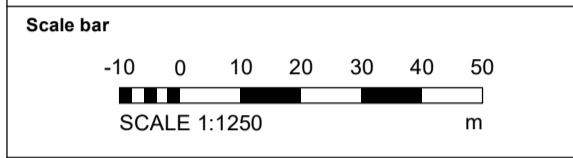
Extent of external features
subject to Planning Condition 6
of MMA Planning Application
ref: 21/04158/F

Keyplan

North



Notes:
Do not scale off this document/drawing/model for any purposes other than those required in connection with the application for planning consent for the project.
This document/drawing/model is prepared for the sole use of EPR Architects' employer and the benefit of the employer's permitted licensees. No liability to any other persons is accepted by EPR Architects.
EPR Architects accepts no liability for any use of this document/drawing/model by parties other than the party for whom it was prepared or for purposes other than those for which it was prepared. Copyright in the design contained in this document/drawing/model remains vested in EPR Architects.



- Notes:**
1. This drawing has been prepared for use in connection with the application for planning consent for the project only.
 2. EPR Architects accepts no liability for use of this drawing by parties other than the party for whom it was prepared or for purposes other than those for which it was prepared.
 3. Landscape shown for illustrative purposes only; refer to Landscape Architect's for Landscape proposals for further details.
 4. Tree locations & existing trees beyond site perimeter - indicative - for illustrative purposes only.

P01 - Planning Condition Issue - AJ

No.	Revision	Date	Initial	Chk'd

EPR Architects
30 Millbank, London SW1P 4EU
+44(0)20 79327600
www.epr.co.uk

Proposed Great Wolf Lodge - EPR Project No
Cheserton, Bicester, Oxfordshire 10875

Proposed Site Plan - Condition 6 Application
Extent of External Features
Scale - as indicated
Status - Planning
Dwg. No. - 10875-EPR-00-ZZ-SK-A-TP-0006

P01_11_10202101