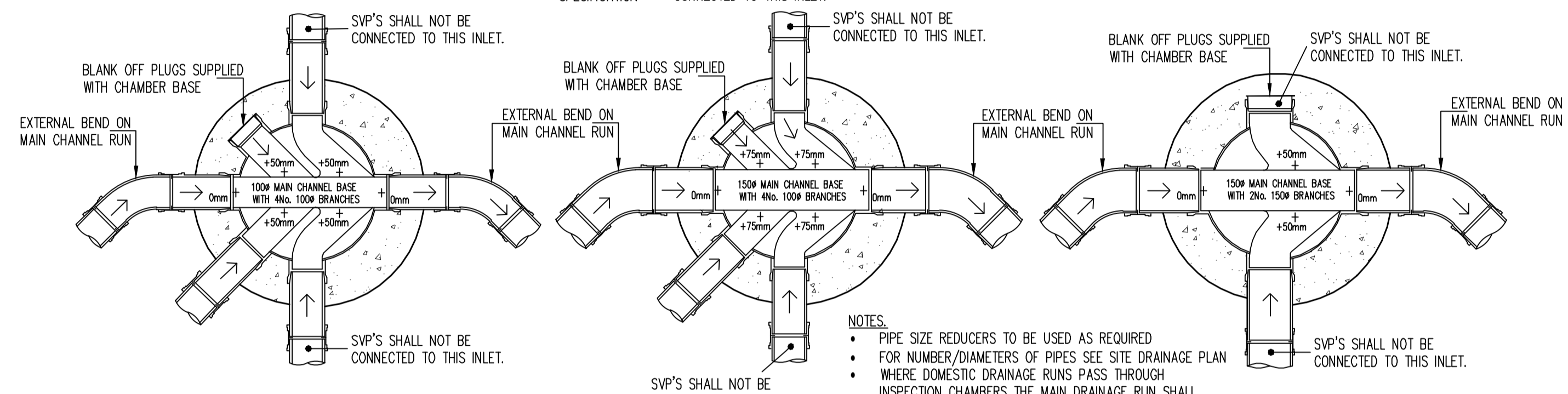
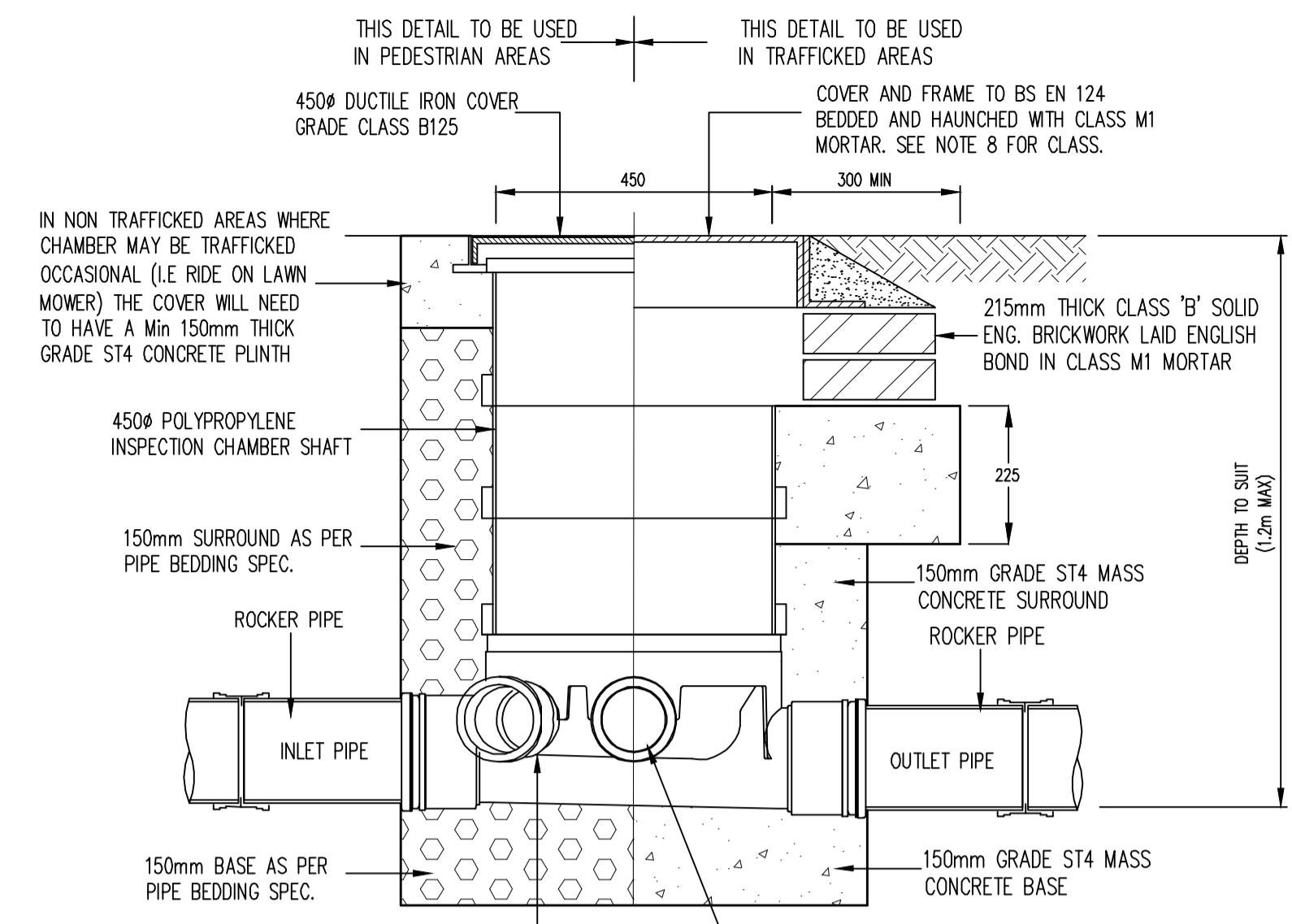
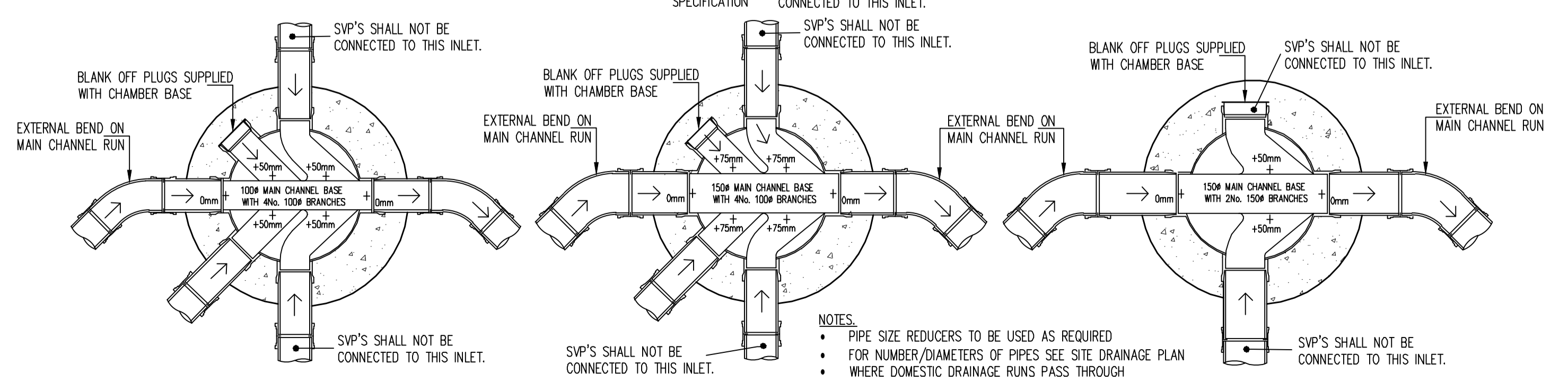
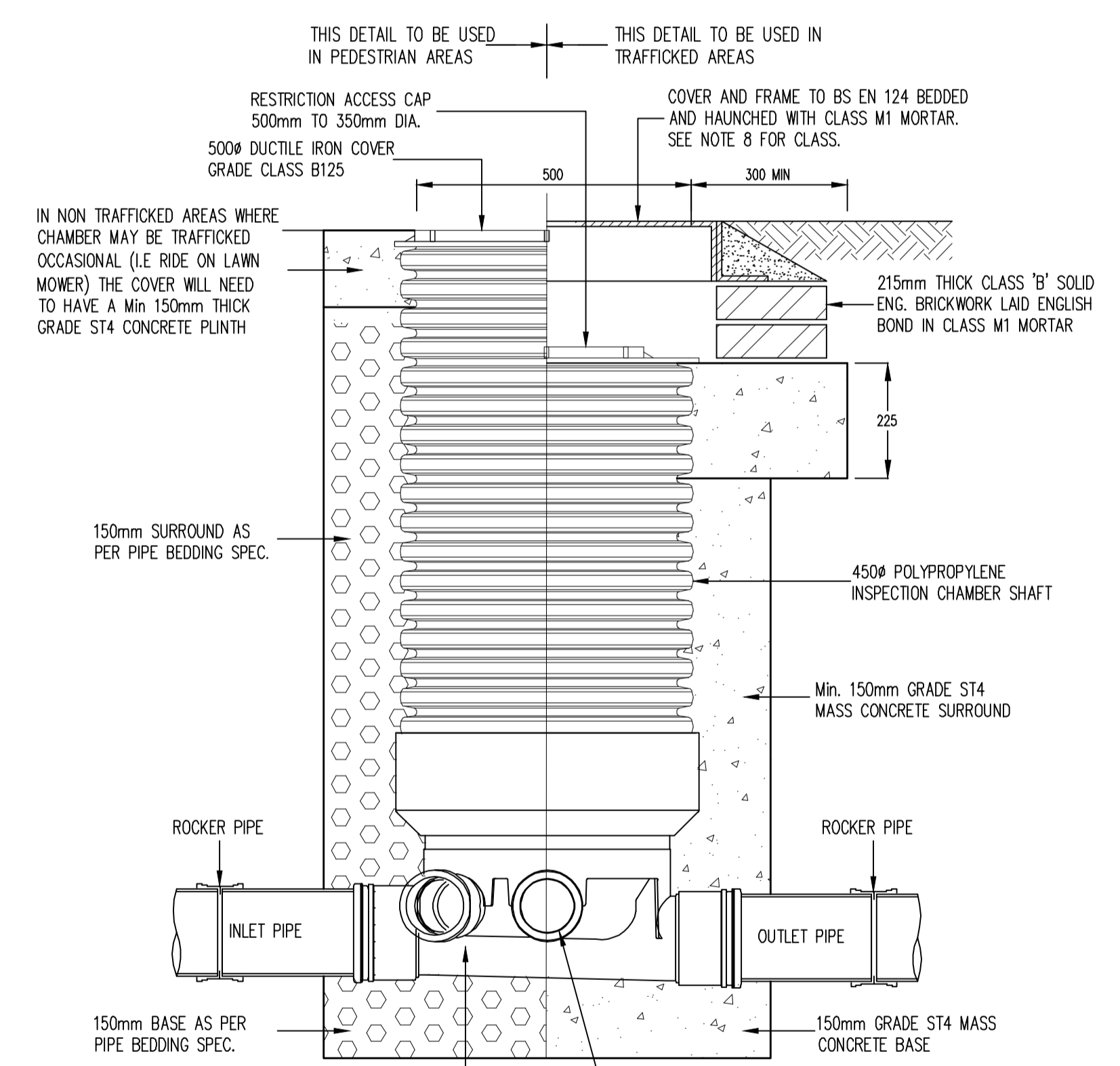


- THIS DRAWING SHALL BE READ IN CONJUNCTION WITH ALL RELEVANT ENGINEERS DRAWINGS. ANY DISCREPANCIES FOUND BETWEEN INFORMATION SHOWN ON THIS OR ANY OTHER DRAWING SHALL BE REPORTED TO THE ENGINEER IMMEDIATELY AND PRIOR TO WORKS COMMENCING ON SITE.
- ALL CONCRETE AT OR BELOW GROUND LEVEL ON SITE SHALL BE ABLE TO WITHSTAND SULPHATE CONCENTRATIONS IN ACCORDANCE WITH BRE SPECIAL DIGEST 1.
- DOMESTIC DRAINAGE SHALL BE OSMA 'OSMADRAIN', HEPWORTH OR OF SIMILAR APPROVED TYPE, BEDDED STRICTLY IN ACCORDANCE WITH THE MANUFACTURERS INSTRUCTIONS.
- WHERE CONCRETE BED AND SURROUND IS SPECIFIED JOINT FILLER SHOULD BE PROVIDED AT EVERY JOINT. THE FILLER MAY BE EXPANDED POLYSTYRENE 25mm THICK OR FLEXCELL CUT TO THE SHAPE OF THE BED AND SURROUNDED AND SUCH THAT THE INGRESS OF CONCRETE INTO THE PIPE IS PREVENTED.
- TO ALLOW FOR POSSIBLE DIFFERENTIAL MOVEMENT A FLEXIBLE JOINT MUST BE INCORPORATED IN EACH SECTION OF PIPELINE WITHIN 150mm OF WHERE IT ENTERS A BUILDING OR CONNECTS WITH A MANHOLE, WALL OR OTHER STRUCTURE - SEE MANUFACTURERS INSTRUCTIONS.
- ALL PIPEWORK GENERALLY TO BE BEDDED AS FOLLOWS UNLESS SHOWN DIFFERENTLY ON CARRIAGEWAY LONGITUDINAL SECTIONS
 - (i) UNDER VEHICULAR AREAS WHERE COVER IS LESS THAN 900mm UNDER PEDESTRIAN AREAS WHERE COVER IS LESS THAN 600mm. ALL GULLY CONNECTIONS. } CONCRETE BED AND SURROUND.
 - (ii) UNDER VEHICULAR AREAS, PEDESTRIAN AREAS WHERE DEPTHS GIVEN IN (i) ARE EXCEEDED; } CLASS S BEDDING.
- MANHOLE COVERS SHALL BE INSTALLED PARALLEL TO KERB LINES.
- MANHOLE COVERS SHALL BE TO BS EN 124 AS FOLLOWS : -
 - ROADS - CLASS D400
 - PARKING AREAS - CLASS C250
 - LANDSCAPED AREAS - CLASS B125



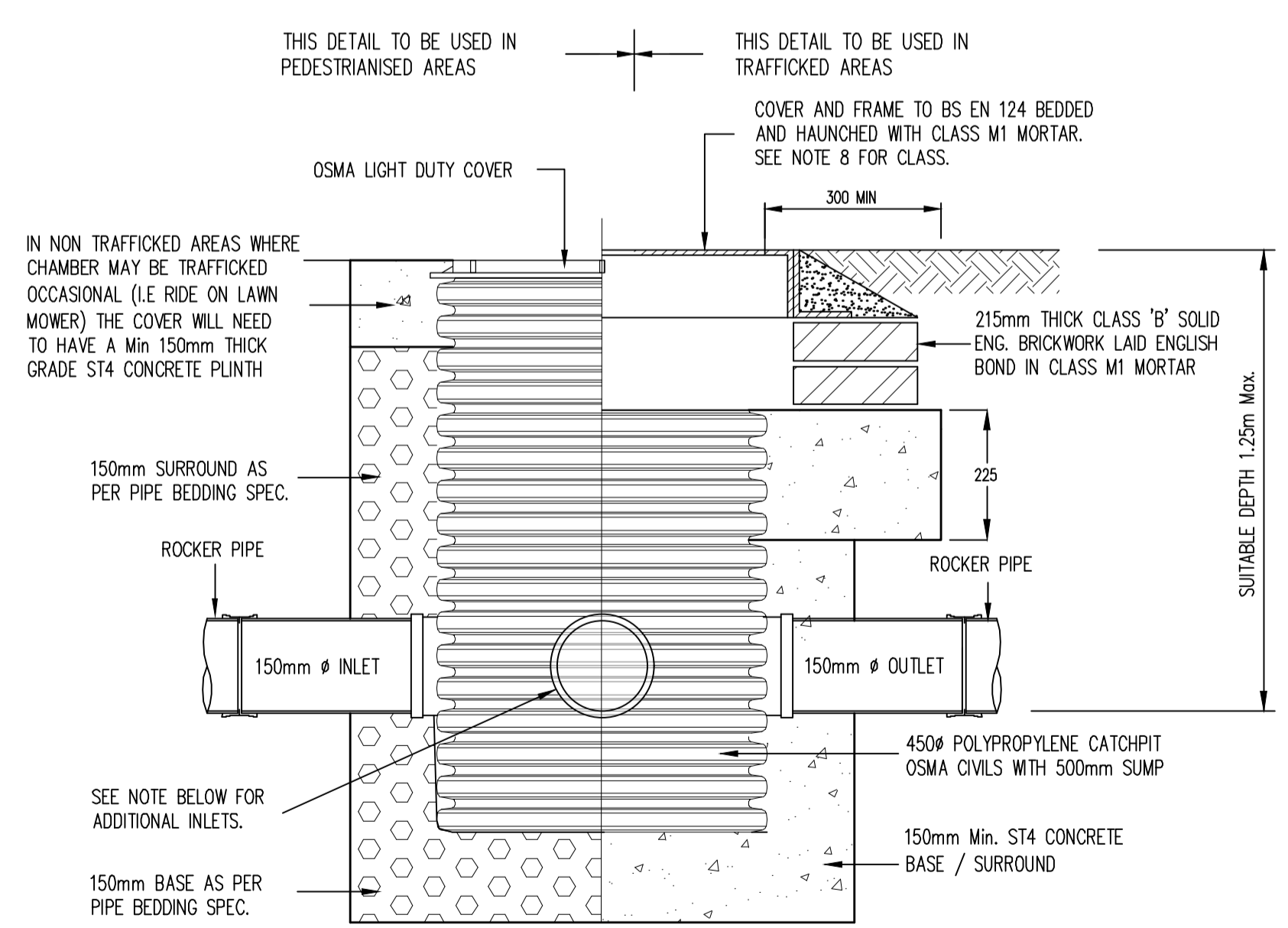
Inspection Chamber Type M
SCALE 1:10

- NOTES:
- PIPE SIZE REDUCERS TO BE USED AS REQUIRED
 - FOR NUMBER/DIAMETERS OF PIPES SEE SITE DRAINAGE PLAN
 - WHERE DOMESTIC DRAINAGE RUNS PASS THROUGH INSPECTION CHAMBERS THE MAIN DRAINAGE RUN SHALL ALWAYS USE THE MAIN INSPECTION CHAMBER CHANNEL. AT CHANGES IN DIRECTION OF THE PIPE RUN THIS WILL RESULT IN THE NEED TO USE RADIUS BENDS AT THE ENTRANCE INTO AND EXIT FROM THE CHAMBER



Inspection Chamber Type L
SCALE 1:10

- NOTES:
- PIPE SIZE REDUCERS TO BE USED AS REQUIRED
 - FOR NUMBER/DIAMETERS OF PIPES SEE SITE DRAINAGE PLAN
 - WHERE DOMESTIC DRAINAGE RUNS PASS THROUGH INSPECTION CHAMBERS THE MAIN DRAINAGE RUN SHALL ALWAYS USE THE MAIN INSPECTION CHAMBER CHANNEL. AT CHANGES IN DIRECTION OF THE PIPE RUN THIS WILL RESULT IN THE NEED TO USE RADIUS BENDS AT THE ENTRANCE INTO AND EXIT FROM THE CHAMBER



Catchpit Type N
Scale 1:10

- STANDARD ARRANGEMENT FOR THIS TYPE OF CATCHPIT IS 150mm INLET AND 150mm OUTLET IN-LINE. ALTERNATIVE ARRANGEMENTS SHALL BE ACHIEVED BY CORE DRILLING SIDE OF UNIT AND INSERTING BUSH / SOCKET FOR ADDITIONAL INLET PIPES IN ACCORDANCE WITH MANUFACTURERS SPECIFICATION. MAX ADDITIONAL INLETS PER SIDE = 1 No 150mm OR 2 No 100mm's.

T1	Apr 22	TENDER ISSUE.	AJV	-
REV	DATE	DESCRIPTION	BY	CHK

STATUS
TENDER

This drawing is the property and copyright of the Consulting Engineer and shall not without written consent be communicated to a third party.



SIBFORD FERRIS
BANBURY

Domestic Drainage Construction
Details Sheet 1 of 2

SDP CONSULTING ENGINEERS
Head Office, Suite 3, Salar House, Campfield Road, St. Albans, Hertfordshire. AL1 5HT
Tel. 01727 844606. Fax. 01727 830771
Email. mail@sdpec.co.uk
Southern Office, 21a Bergate, Christchurch, Dorset. BH23 1QD.
Tel. 01727 844606. Fax. 01202 490601
Email. sdpsouth@sdpec.co.uk

SCALE AT A1	DRAWN	DATE
See Drg	AJV	Apr 22
DRAWING NO.	CHECKED	PASSED
E21-077-168		
	REV.	T1