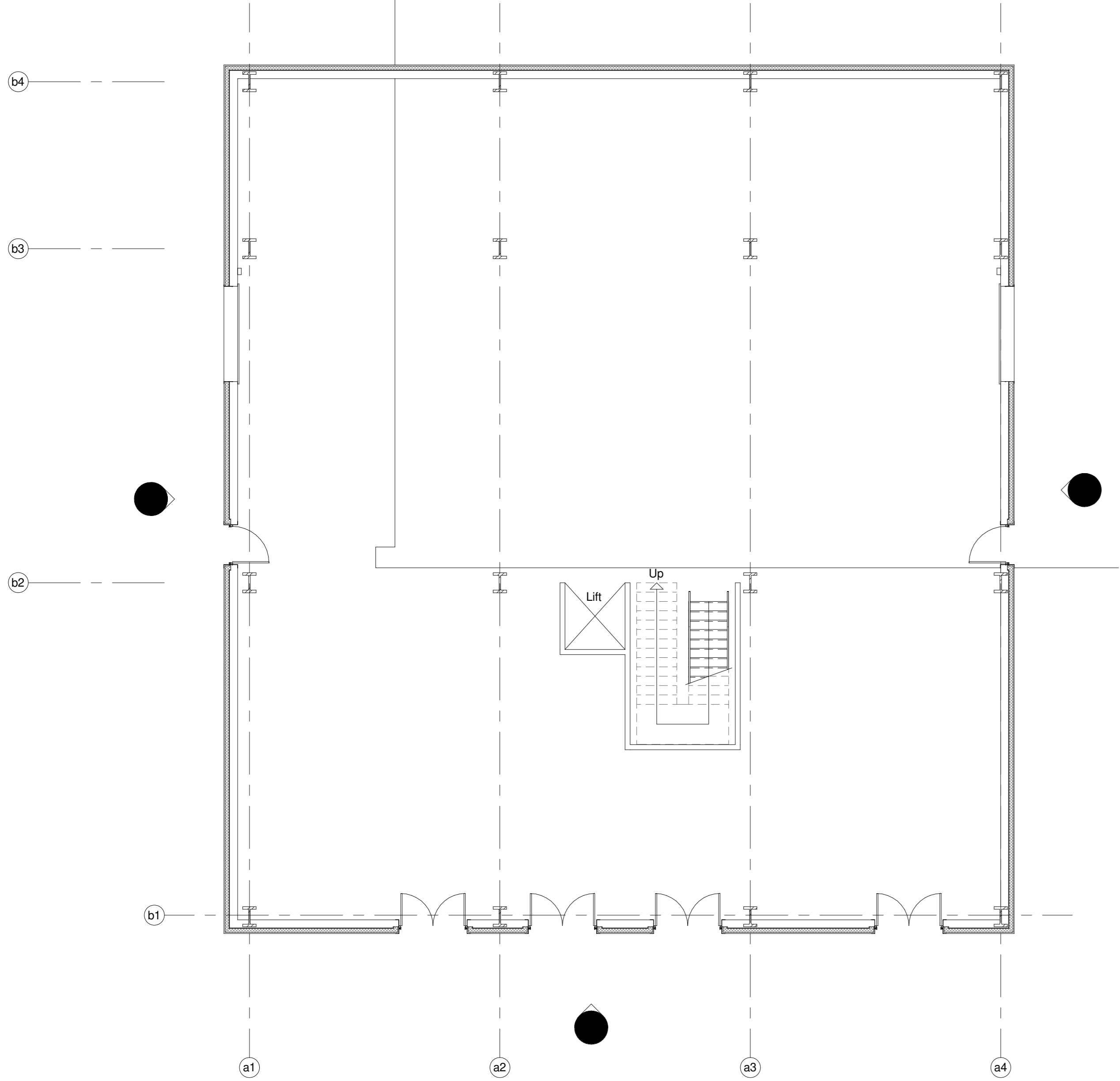
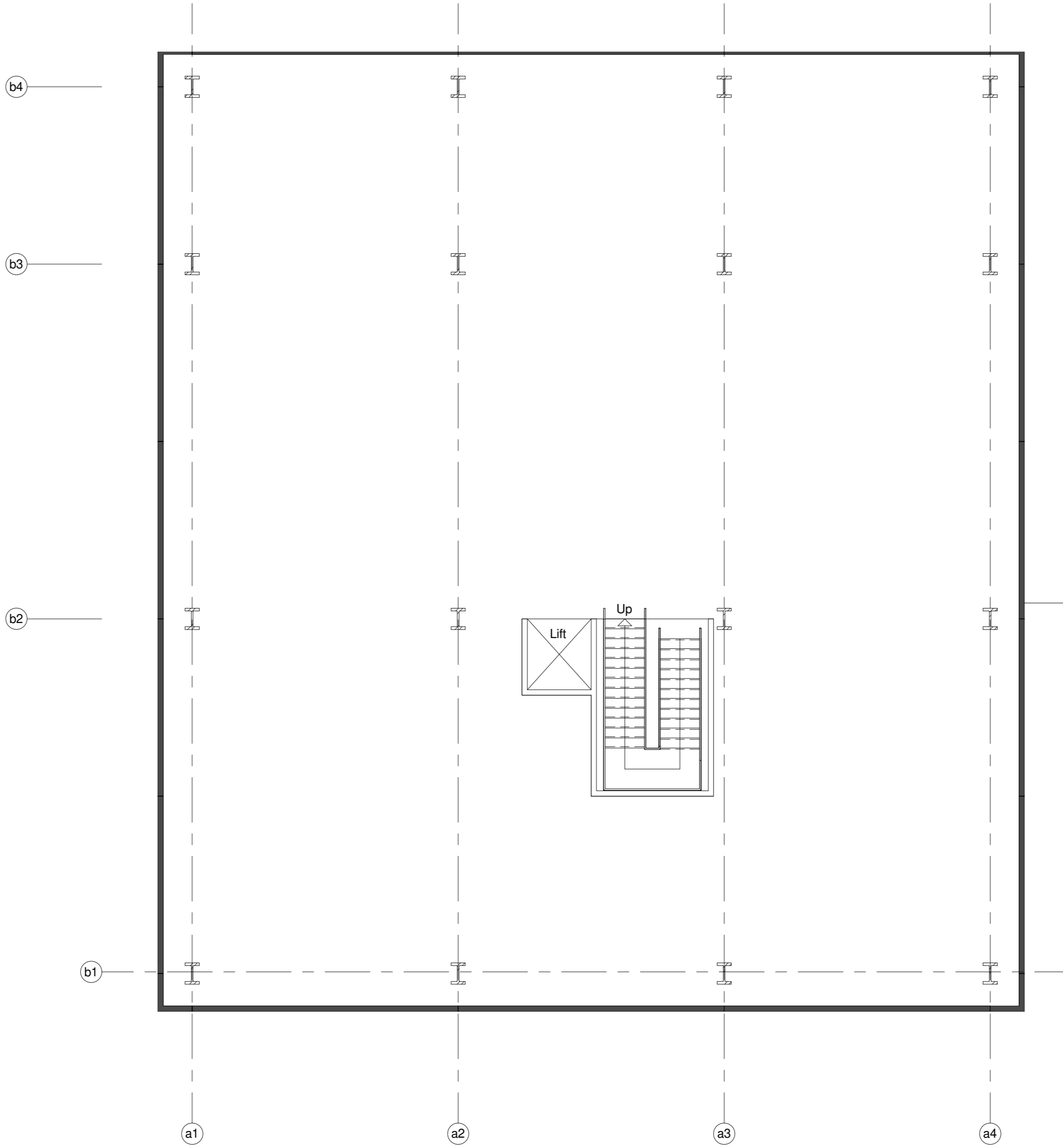


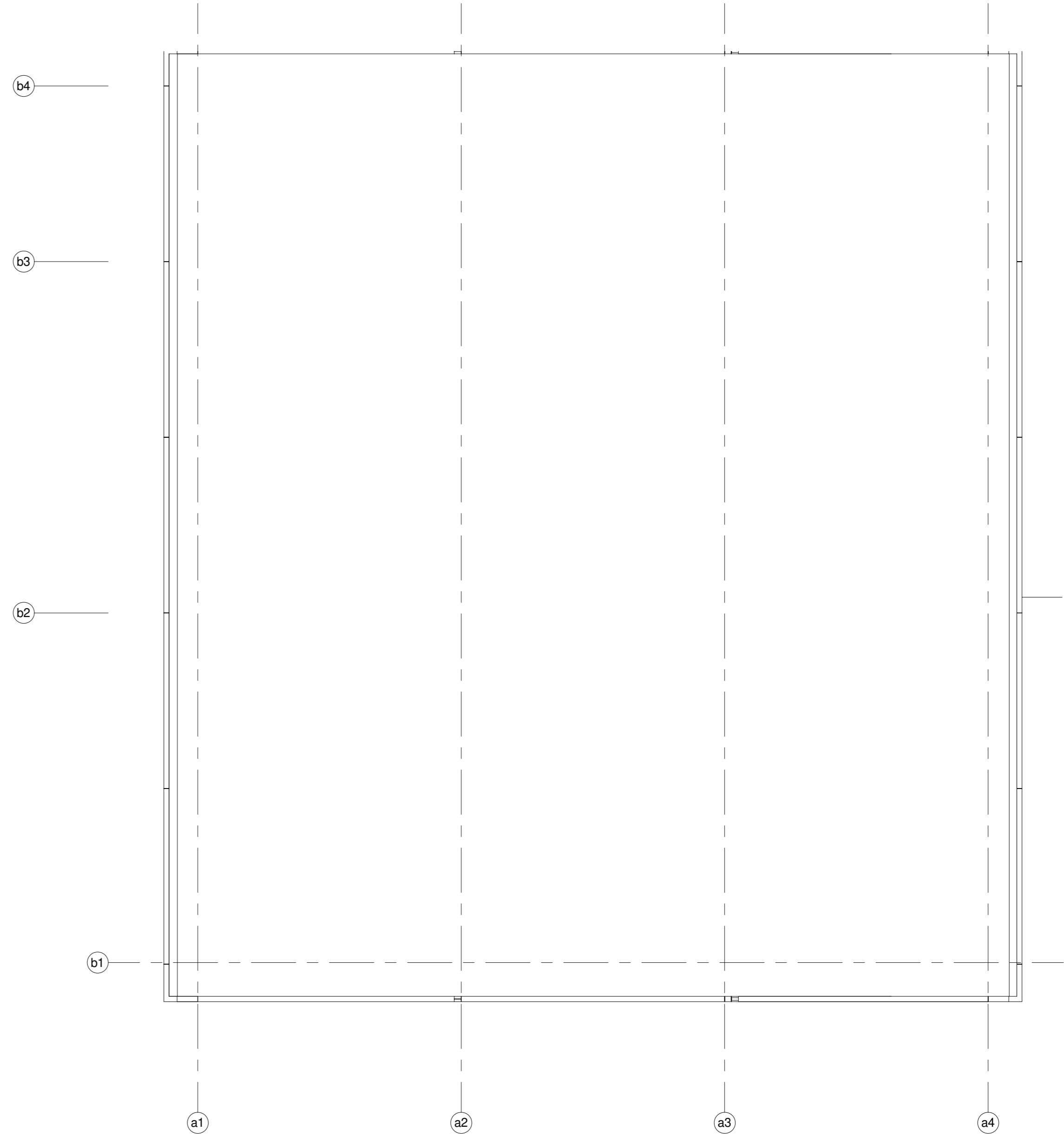
Rev	Date	By	Description
A	27/09/2021	JMS	Drawings updated following SGP internal review
B	28/10/2021	JMS	Revised as per meeting with TSG on 27/10/2021
C	23/11/2021	AJ	Drawing amended as per email received from Client on 23/11/2021
D	25/03/2022	JMS	Elevation treatment amended



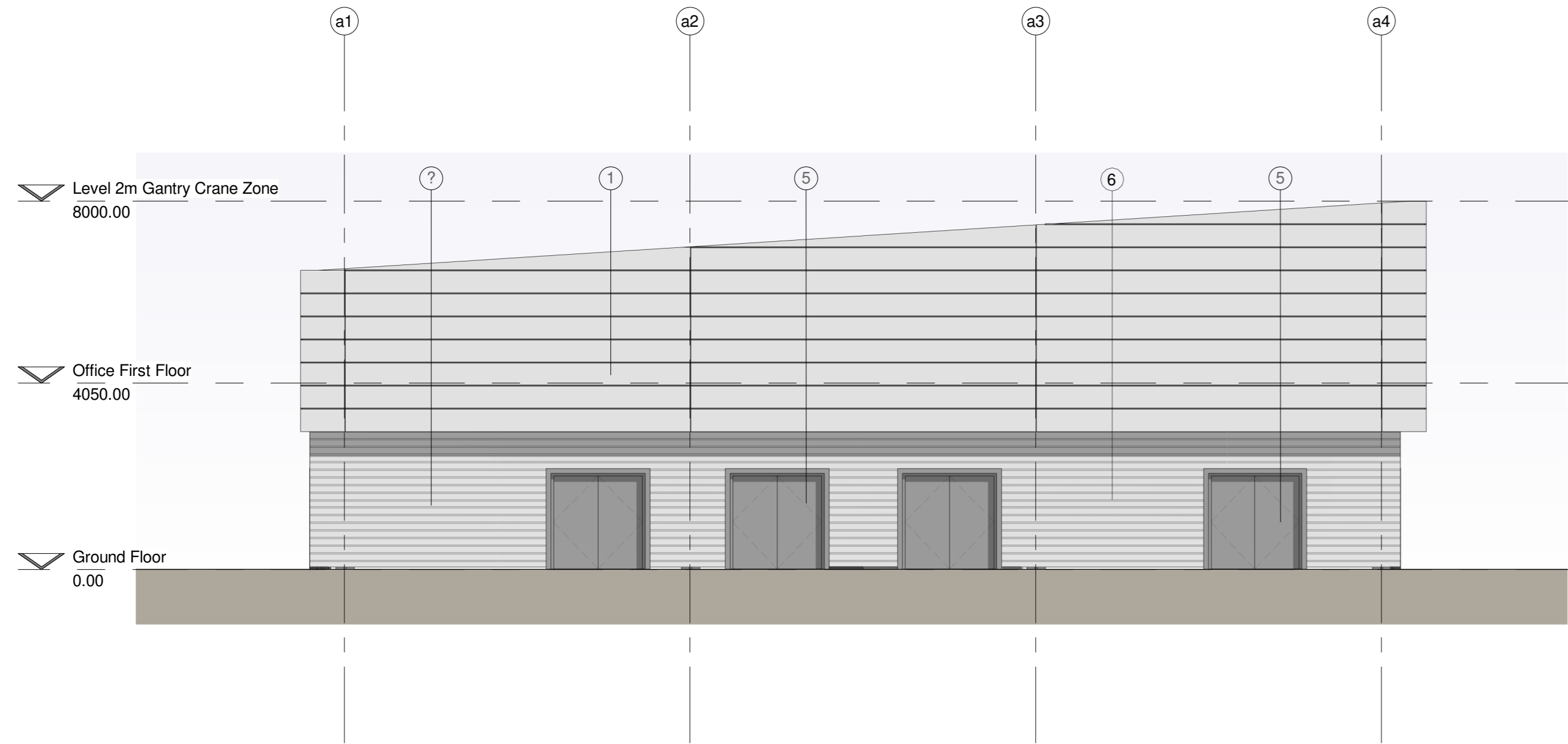
1 Facilities Management Building Ground Floor Plan
1 : 100



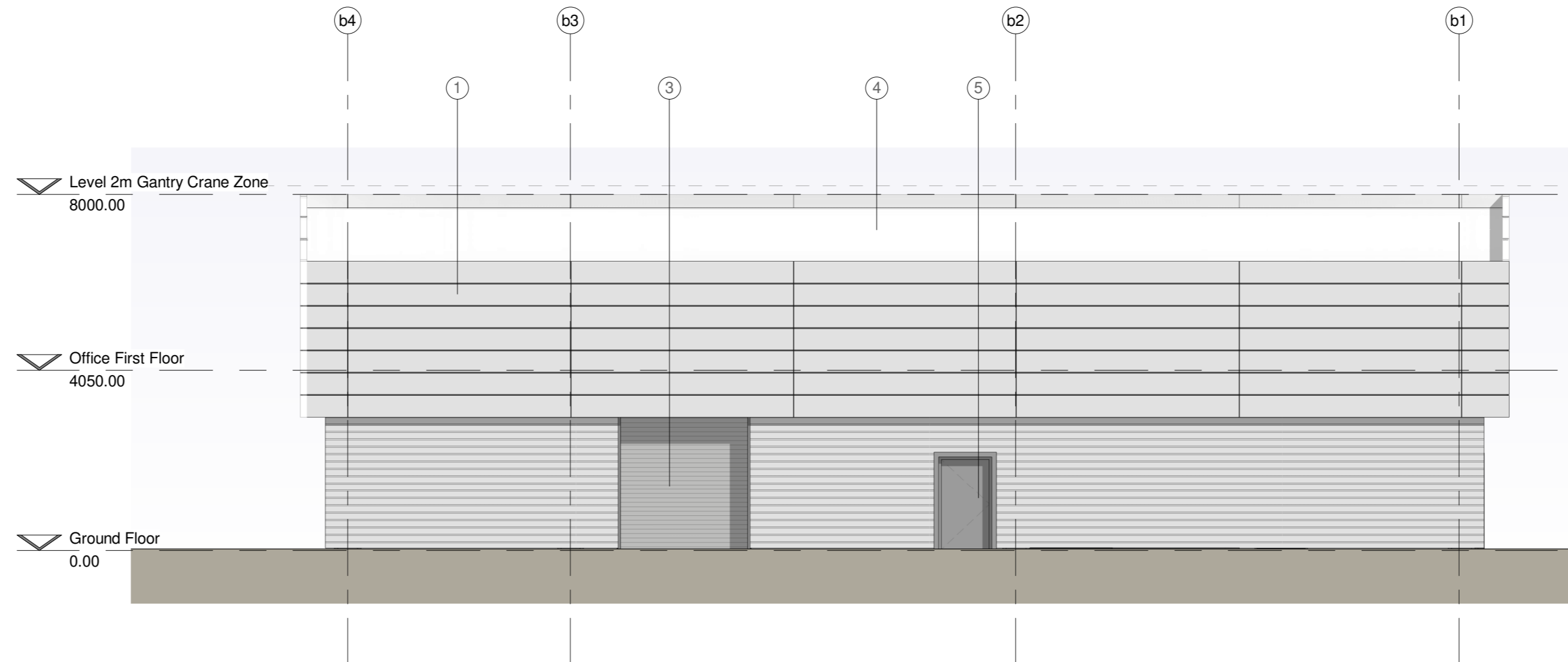
4 Facilities Management Building First Floor Plan
1 : 100



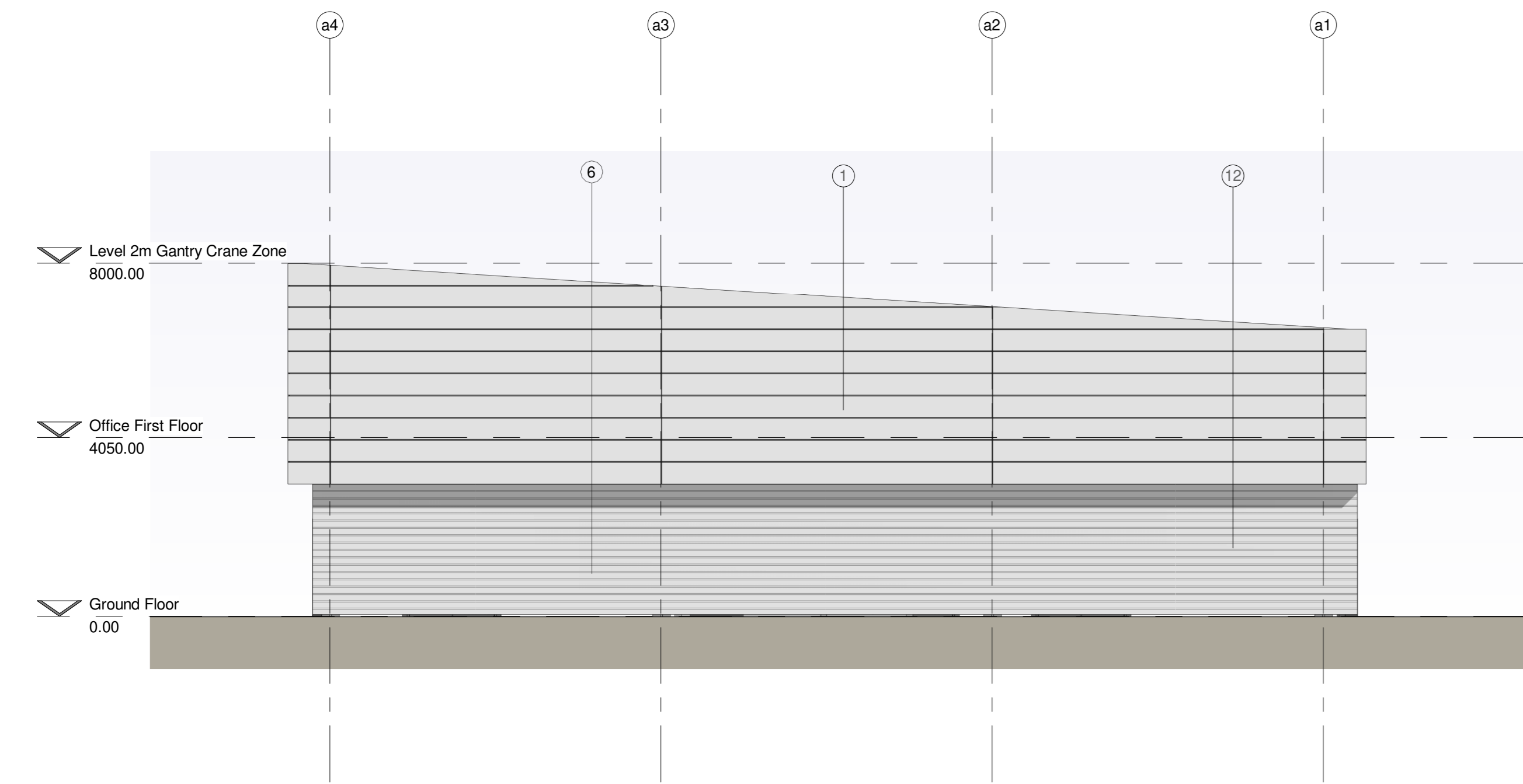
7 Facilities Management Building Roof Plan
1 : 100



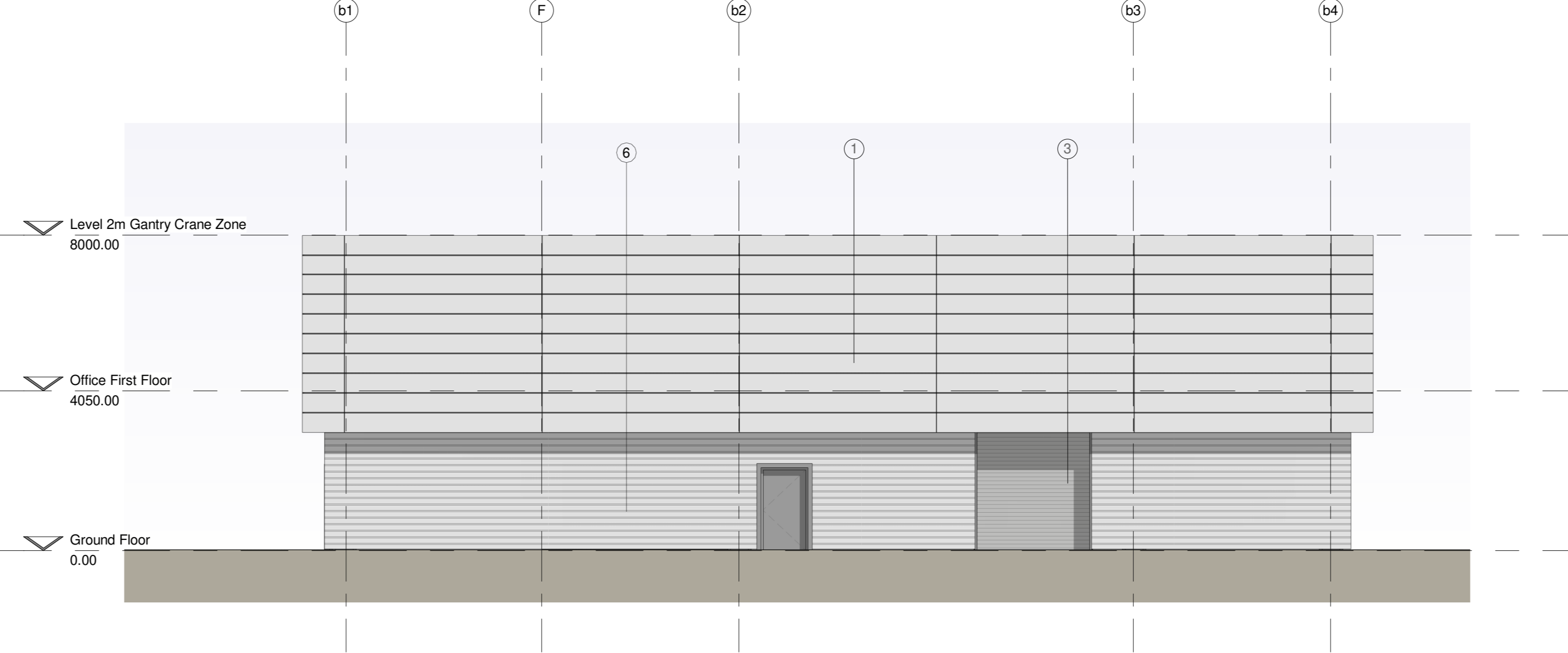
2 Facilities Management Building Elevation B
1 : 100



3 Facilities Management Building Elevation A
1 : 100



5 Facilities Management Building Elevation C
1 : 100



6 Facilities Management Building Elevation D
1 : 100

Area Schedule

GIA Floorspace for Phase 1:	Ground Floor:	575.9 sq.m.	6,199 sq.ft.
	GF Office :	593 sq.m.	6,383 sq.ft.
TOTAL GIA		1,168.9 sq.m.	12,582 sq.ft.

MATERIALS

1. Trimo Qbiss One Cladding (or similar) with non-combustible insulation laid in 500mm band at 5m lengths
Colour: Grey (RAL 9007)
2. Composite Insulated Metal Cladding
Colour: Grey (RAL 9007)
3. Roller Shutter
Colour: Silver
4. Roof insulated metal deck roof system (Kalzip or similar)
5. Fire escape doors double glazed aluminium ppc
Frame colour: Grey (RAL 9007)
6. CA trapezoidal profile built up cladding laid horizontally
Colour: Grey (RAL 9007)

SIEMENS
Healthineers

TRITAX SYMMETRY
A TRITAX BIG BOX COMPANY

SGP

Architects + Masterplanners

Waterfront House
2a Smith Way
Grove Park
Enderby
Leicester LE19 1SX

t: +44 (0)116 247 0557

www.stephengeorge.co.uk

Oxford North
M40 J9

Drawing Name:
ENHANCED - Phase 1 & 2 - Facilities
Management Building

Drawing Stage: **Planning**

Status: **90**

SGP File Ref: 131300

13-222 22/08/21 AA MMS As @ AD D
SGP Project No. Date: Drawn: Team: Hdr/Rev: Rev:

Drawing Number:
13-222-SGP-ZZ-ZZ-DR-A- 131115

Project Code: Originator: Volume Level: Type: Role: Number:



SCALE 1:100
1m | 5m | 10m