

Description	Symbol	Avg	Min	Max/Avg
Access Road	+	21 lux	6 lux	0.29
SPILL	+	1 lux	0 lux	0.00
Unit 5a Car Park - 20.0.25lu	+	20 lux	7 lux	0.35
Unit 5b Car Park (N) - 20.0.25lu	+	25 lux	15 lux	0.60
Unit 6 Car Park (S) - 20.0.25lu	+	24 lux	10 lux	0.42
Unit 7b Yard (7) 20.0.25lu	+	20 lux	14 lux	0.70
Unit 5b Car Park (S) - 20.0.25lu	+	23 lux	7 lux	0.35
Unit 6 Car Park (N) - 20.0.25lu	+	22 lux	8 lux	0.35
Unit 7a Car Park - 20.0.25lu	+	21 lux	5 lux	0.24
Unit 7b Car Park - 20.0.25lu	+	20 lux	8 lux	0.40
Unit 5a Rear Walkways - 100.25lu	+	10 lux	3 lux	0.30
Unit 5b Rear Walkways - 100.25lu	+	10 lux	4 lux	0.40
Unit 6 Rear Walkways - 100.25lu	+	12 lux	8 lux	0.67
Unit 7a Rear Walkways - 100.25lu	+	12 lux	9 lux	0.75
Unit 7b Rear Walkways - 100.25lu	+	10 lux	4 lux	0.40

Symbol	Label	Image	Quantity	Manufacturer	Catalog Number	Description	Wattage
AW	AW		6	HOLOPHANE EUROPE LIMITED	DSK1 2 LA224 FW on Wall Bracket at 8m AFF	D-Series 1 Luminaire	208
B1	B1		13	HOLOPHANE EUROPE LIMITED	DSK1 2 LA164 FW on 8m Column	D-Series 1 Luminaire	131
B2	B2		3	HOLOPHANE EUROPE LIMITED	DSK1 2 LA164 FW on 8m Column	D-Series 1 Luminaire	262
BW	BW		4	HOLOPHANE EUROPE LIMITED	DSK1 2 LA164 FW on Wall Bracket at 8m AFF	D-Series 1 Luminaire	131
C1	C1		12	HOLOPHANE EUROPE LIMITED	DSK1 2 LA164 AY on 8m Column	D-Series 1 Luminaire	131
CW	CW		2	HOLOPHANE EUROPE LIMITED	DSK1 2 LA164 AY on Wall Bracket at 8m AFF	D-Series 1 Luminaire	131
XA	XA		6	HOLOPHANE EUROPE LIMITED	EXISTING DSK1 2 LA164 FW on 8m Column	D-Series 1 Luminaire	131
D	D		22	Plank s.r.l.	PSB SLIM 501062 - 950x125 Te Road	SLIM 800mm 1 LED 8 8W - 4000K 2 Fixtures 220-240V 050/04Hz	8.8
E	E		24	HOLOPHANE EUROPE LIMITED	DWL 1 LA014 HN W03 at 2.7m AFF	Denver D Wall	6.5

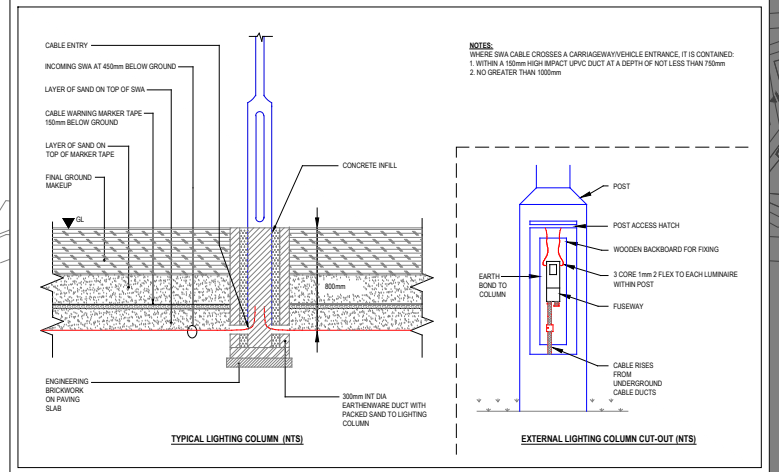
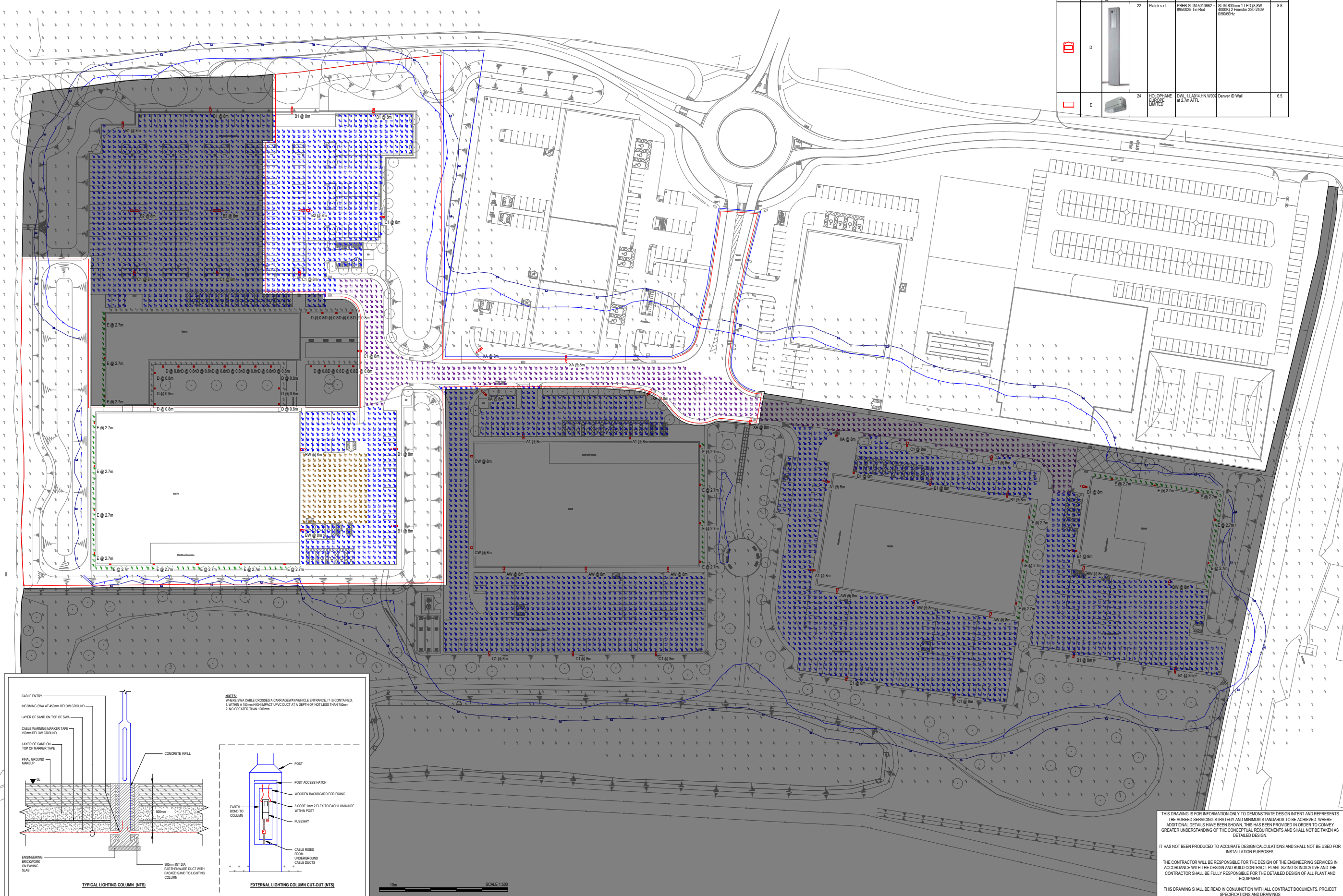
© Engineering Services Consultancy Limited. This drawing is copyright and must not be reproduced in part or whole without prior written consent. Contractors must verify all dimensions on site before commencing work. All works shall be coordinated with all other trades.

ISO 9001 REGISTERED 1934

NO.	DESCRIPTION OF HAZARD	CONTROL MEASURES	ACTION BY
1	RENDERING SERVICES AND IDENTIFICATION OF EXISTING SERVICES IDENTIFIED IN DRAWING LOCATION	IDENTIFICATION OF EXISTING UNDERGROUND SERVICES DRAWINGS AND CATCHING OF SERVICES	CONTRACTOR

**NOTES**

- THIS DRAWING SHALL BE READ IN CONJUNCTION WITH ALL OTHER ENGINEERING SERVICES CONSULTANCY LIMITED DRAWINGS
- THE EXTERNAL LIGHTING SHALL BE DESIGNED TO ENSURE THAT REQUIRED LIGHTING LEVELS ARE ACHIEVED WHILST MINIMISING GLOW AND LIGHT SPILLAGE TO THE SURROUNDING AREAS AND TO ENSURE THERE IS NO DIRECT CONTRIBUTION TO UPWARD LIGHT POLLUTION
- THE EXTERNAL LIGHTING SCHEME SHALL BE PROVIDED IN ACCORDANCE WITH THE LOCAL PLANNING AUTHORITIES REQUIREMENTS/RESTRICTIONS.
- WHERE COLUMNS ARE POSITIONED NEAR TO NEIGHBOURING PROPERTIES, OR LOCATED ON THE PERIMETER OF THE SITE, THEY SHALL BE COMPLETE WITH SUITABLE BACK-SHIELDS TO PREVENT LIGHT SPILL.
- ALL COLUMNS SHALL HAVE A FLEXIBLE DUCT PASSING INTO THE BASE, THROUGH THE CONCRETE, TO ENSURE THAT FUTURE REWIRING OF THE CIRCUITS IS POSSIBLE.
- WHERE LUMINAIRES ARE FIXED DIRECTLY TO THE EXTERNAL BUILDING FABRIC, THE LUMINAIRES SHALL BE THE SAME RAL COLOUR AS THE CLADDING PANELS. ALL LUMINAIRE FIXING BOLTS ETC. SHALL BE THE SAME COLOUR AS THE LUMINAIRE.
- GENERALLY, THE COLUMNS SHALL BE GALVANISED STEEL CONSTRUCTION. THE ELECTRICAL CONTRACTOR SHALL Liaise WITH THE ARCHITECT TO ASCERTAIN THE RAL COLOUR OF THE COLUMNS. THE COLUMN HEADS SHALL MATCH THE RAL COLOUR OF THE COLUMN.
- WHERE SERVICES NEED TO BE INSTALLED WITHIN DUCTS / TRENCHES, THE ELECTRICAL CONTRACTOR SHALL SUPPLY THE MAIN CONTRACTOR WITH DETAILS OF REQUIRED DUCT ROUTES AND DRAW P11 LOCATIONS.
- DURING INSTALLATION OF THE EXTERNAL LIGHTING A DRAW WIRE SHALL BE PULLED THROUGH WITH THE CABLING TO PROVIDE A MEANS OF INSTALLING FUTURE SERVICES



P1 22.03.22 Issued for planning CP  
Rev. Date Details Initials

Engineering Services Consultancy Ltd  
Griffin House  
19 Ludgate Hill  
Birmingham  
B3 1DW

T: 0121 214 8998  
F: 0121 214 8999  
W: www.esca.co.uk

Client:

Project: **Bicester Gateway Phase 2**

Drawing Title: **External Lighting Layout**

IT HAS NOT BEEN PRODUCED TO ACCURATE DESIGN CALCULATIONS AND SHALL NOT BE USED FOR INSTALLATION PURPOSES.

THE CONTRACTOR WILL BE RESPONSIBLE FOR THE DESIGN OF THE ENGINEERING SERVICES IN ACCORDANCE WITH THE DESIGN AND BUILD CONTRACT. PLANT SIZING IS INDICATIVE AND THE CONTRACTOR SHALL BE FULLY RESPONSIBLE FOR THE DETAILED DESIGN OF ALL PLANT AND EQUIPMENT.

THIS DRAWING SHALL BE READ IN CONJUNCTION WITH ALL CONTRACT DOCUMENTS, PROJECT SPECIFICATIONS AND DRAWINGS.

Drawn	Engineer	Approved
DM	AW	CP

Project No: 1760 Date: Feb 2022 Scale: @ A0  
Drawing No: 1760-ESC-00-ZZ-DR-E-2102 Revision: P1