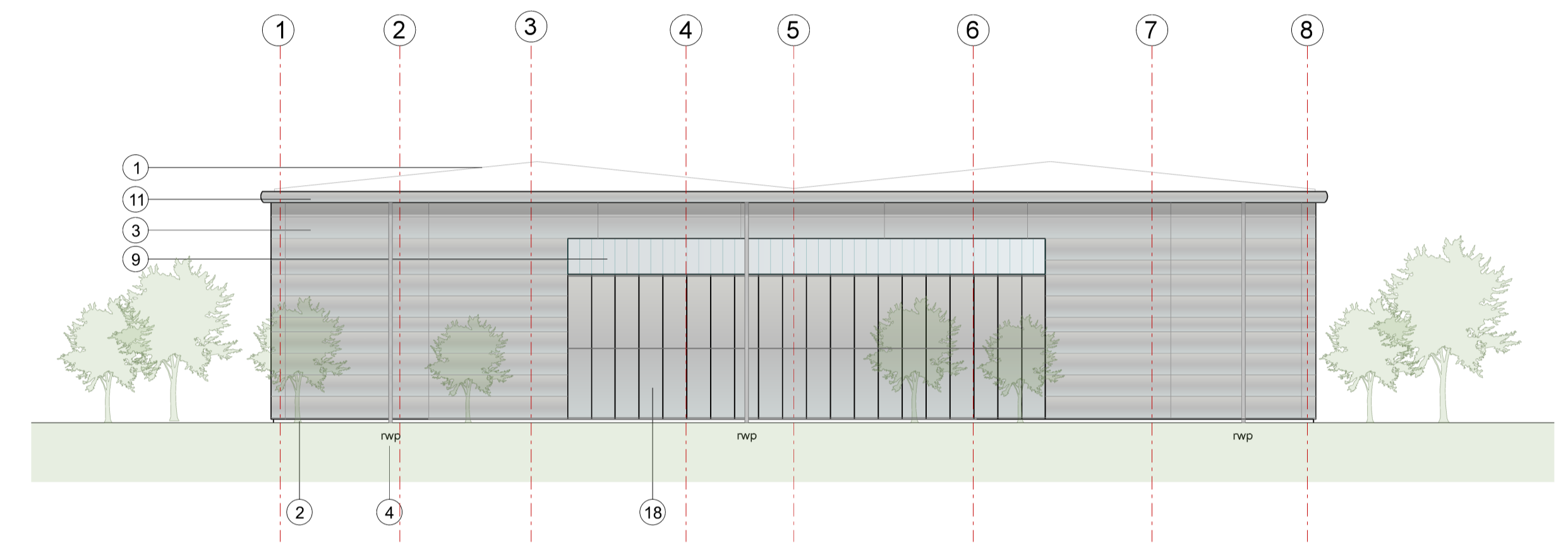
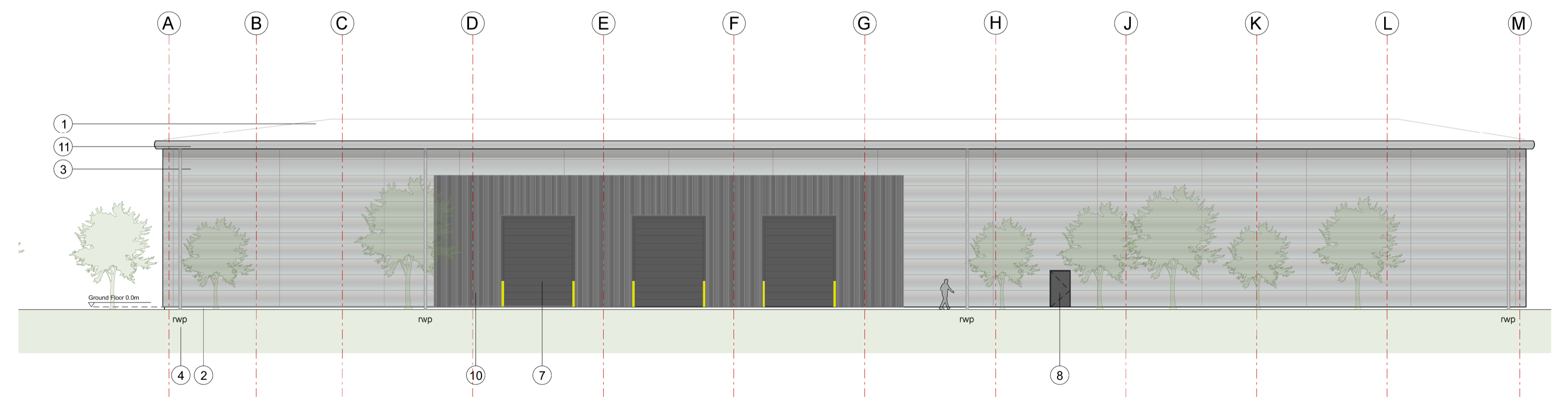


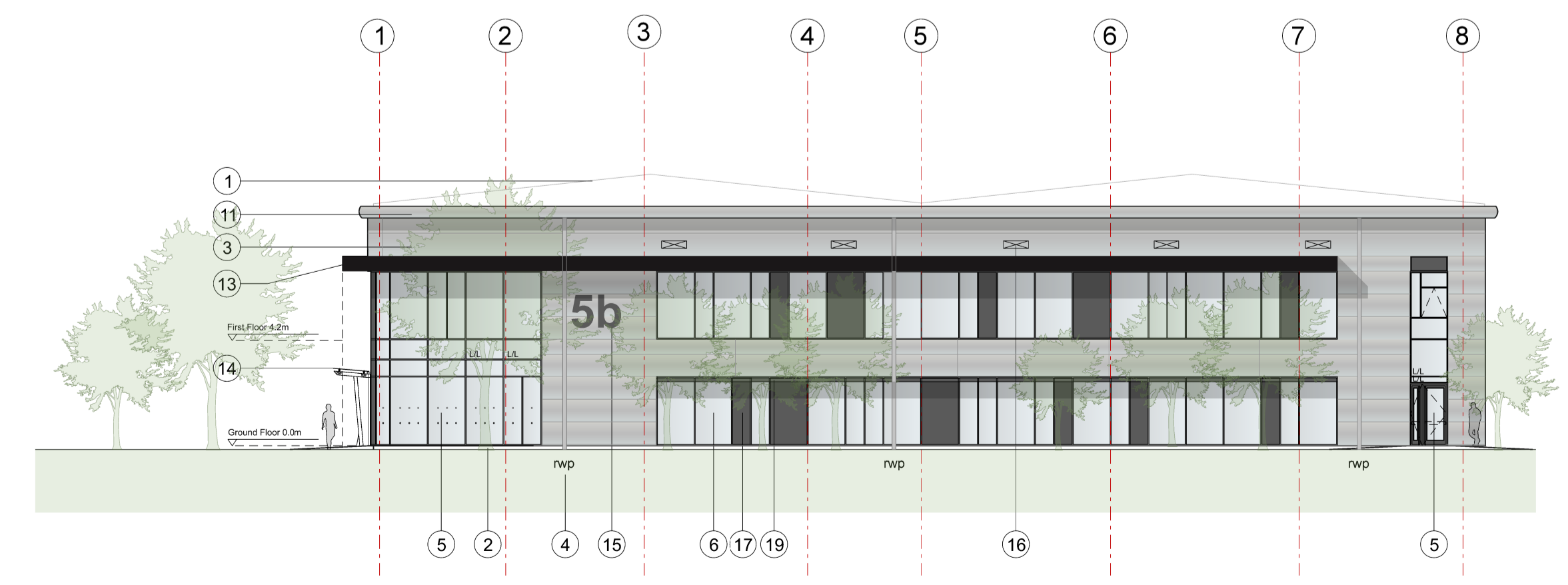
1 Unit 5b  
008 North West Elevation



2 Unit 5b  
008 North East Elevation



3 Unit 5b  
008 South East Elevation



4 Unit 5b  
008 South West Elevation

KEY	
①	Built-up roof system colour :Goosewing Grey
②	Flashing, colour: Zeus
③	Micro-lined Trimoterm facade profile system Colorcoat Prisma - Sirius
④	Rainwater pipe, colour:Sirius
⑤	PPC Aluminium double glazed curtain walling, colour: Anthracite
⑥	PPC Aluminium double glazed windows Colour: Anthracite
⑦	Loading doors, colour: Anthracite
⑧	Steel fire escape door, colour: Anthracite
⑨	Translucent cladding panel, CA Profiles therma-light CF40
⑩	Vertical Trapezoidal built-up cladding system - Corus Colorcoat Prisma - Zeus
⑪	Gutter, colour: Sirius
⑬	Feature canopy, colour: Black
⑭	Etched glass canopy supported off a steelwork frame, colour: Anthracite
⑮	Unit number
⑯	Louvres - colour to match cladding (to M&E consultant specification)
⑰	Decorative coloured glass feature insulated cassettes
⑱	PPC Rainscreen, colour: Sirius
⑲	Brise Soleil, colour to match window frame
L/L	Look-a-like panels - obscured glass

Rev Description Chk Date

Peer House  
8 -14 Verulam Street  
London WC1X 8LZ  
tel +44(0)20 7400 2120  
enquiries@cornisharchitects.com  
www.cornisharchitects.com

cornisharchitects

RIBA  
Chartered Practice

Project Title: CATALYST PHASE 2

Drawing Title: UNIT 5B ELEVATIONS

Drawing Status: TOWN PLANNING

Scale: 0 2 metres 16

Drawn By: Scale: Date: Chk'd By:  
R P 1:200 @ A1 07/03/2022 S M

ALBION LAND

Drawing No: 21023 - TP - 008 Rev: -