



Sibford School
The Hill, Back Lane,
Sibford Ferris

Biodiversity Enhancement Strategy

Prepared by
Griffin Ecology Ltd.

Instructed by
Framptons Town Planning
On behalf of
Sibford School

Project No. GE0314

We assist our clients to deliver a measurable net gain in biodiversity.

Report Version	Date	Author:	Quality check by:	Approved by:
Draft Document	25 th February 2022	Casey-Ruth Griffin BSc (Hons) MCIEEM Principal Ecologist	Ian Griffin, Commercial Director	Casey-Ruth Griffin BSc (Hons) MCIEEM, Principal Ecologist
Final Document	4 th March 2022	Casey-Ruth Griffin BSc (Hons) MCIEEM Principal Ecologist	Ian Griffin, Commercial Director	Casey-Ruth Griffin BSc (Hons) MCIEEM, Principal Ecologist

Contact details:**Griffin Ecology Ltd.**

Bloxham Mill Business Centre, Barford Road,
Bloxham, Oxfordshire, OX15 4FF, United Kingdom
Tel: 01295 982022

Contents

1. Introduction	4
1.1 Planning Context	4
1.2 Background	4
2. Enhancement Measures	5
2.1 Purpose and Objectives	5
2.2 Roles and Responsibilities	5
2.3 Species.....	5
3. Birds Box Scheme.....	5
4. Bat Box Scheme.....	8
5. Monitoring and Remedial Requirements.....	10
6. References	11

1. Introduction

1.1 Planning Context

Griffin Ecology Ltd. has been commissioned by the client to compile a Biodiversity Enhancement Strategy to address Condition 3, as detailed within the granted Planning Decision 21/03039/F, relating to the application for the demolition of the existing sport pavilion and erection of a new pavilion at Sibford School, Sibford Ferris in Oxfordshire.

Relevant Condition 3 states:-

“No development shall commence above slab level unless and until a method statement for enhancing the bat and bird boxes has been submitted to and approved in writing by the Local Planning Authority. The biodiversity enhancement measures approved shall be carried out prior to the first use or occupation of the development and shall be retained thereafter in accordance with the approved details.”

1.2 Background

The site is located within the managed grounds of Sibford School, to the southern outskirts of the rural settlement of Sibford Ferris, Oxfordshire. The surrounding landscape offers a mosaic of managed amenity grassland, arable cultivation and grazed pasture interspersed by pockets of woodland. This surrounding landscape is considered well connected to the site by an established network of hedgerows.

A Preliminary Bat Roost Appraisal and Tree Survey, undertaken by Cotswold Wildlife Services in June 2021, provide the baseline for the overall ecological status of the site. In addition, this BES has been informed following a review of the existing documentation including:-

- Bat Survey Report (CWS, 2021);
- Tree Report (CWS, 2021);
- Site Location Plan, DWG. No. PF/10601.01;
- Decision Notice, Application No.: 21/03039/F (Cherwell District Council, 2021)
- Land Survey, DWG NO.: 2449-1, dated June 2021
- Plan and Elevations, DWG NO.: 53-69366-SHEET2 Rev A, dated 04.06.2021

This report seeks to address the enhancement of features specific to roosting bats and nesting birds to be incorporated within the agreed site layout. As Griffin Ecology Ltd. have not been informed to the contrary, it is assumed that ecological mitigation and compensation in response to any identified ecological impacts have been appropriately addressed.

2. Enhancement Measures

2.1 Purpose and Objectives

This enhancement strategy seeks to maximise the ecological value of the site, post development, for roosting bats and nesting birds in accordance with wording of Condition 3 of the granted planning permission relating to the demolition and re-development of the pavilion building at Sibford School.

2.2 Roles and Responsibilities

Sibford School and their appointed contractors will be responsible for the implementation of the actions detailed within this agreed Biodiversity Enhancement Strategy (BES).

It will remain Sibford School's and their appointed contractors responsibility to ensure monitoring is completed as described, by an appointed and appropriately qualified person/s, and that this monitoring effectively informs the management of enhanced features within the site.

2.3 Species

Nesting birds:

The development will seek to include a tailored bird box scheme within the built area and habitats associated with the site. This scheme will include a number and variety of integrated and stand alone bird nesting boxes providing increased bird nesting opportunities post development.

Bats:

The development will seek to secure a tailored bat box scheme to be incorporated within the built area and habitats associated with the site. This scheme will include a number and variety of integrated and stand alone bat roosting boxes, providing increased bat roosting opportunities post development.

3. Birds Box Scheme

A total of 5 bird nesting boxes will be installed on the proposed new pavilion and on retained trees within the site. Bird boxes, where placed on the building, will be sited at eaves level or along the gable verges to the north western and south western elevations to avoid direct sunlight and prevailing weather in an effort to ensure maximum occupation.

Tree sited bird nest boxes will be secured to retained trees at a height of between 2m and 4m from ground level in a northern or eastern direction avoiding direct sunlight and prevailing weathers.

All bird nest boxes will be sited to ensure a clear flight path to the box entrance.

Boxes will include 2x House Sparrow Terrace FSC Nest Box and 3x Vivara Pro Barcelona WoodStone Open Nest Box or similar.



House Sparrow Terrace



Vivara Pro Barcelona open fronted box

An illustrated map of the indicative locations of these boxes is included within Figure 1 overleaf:

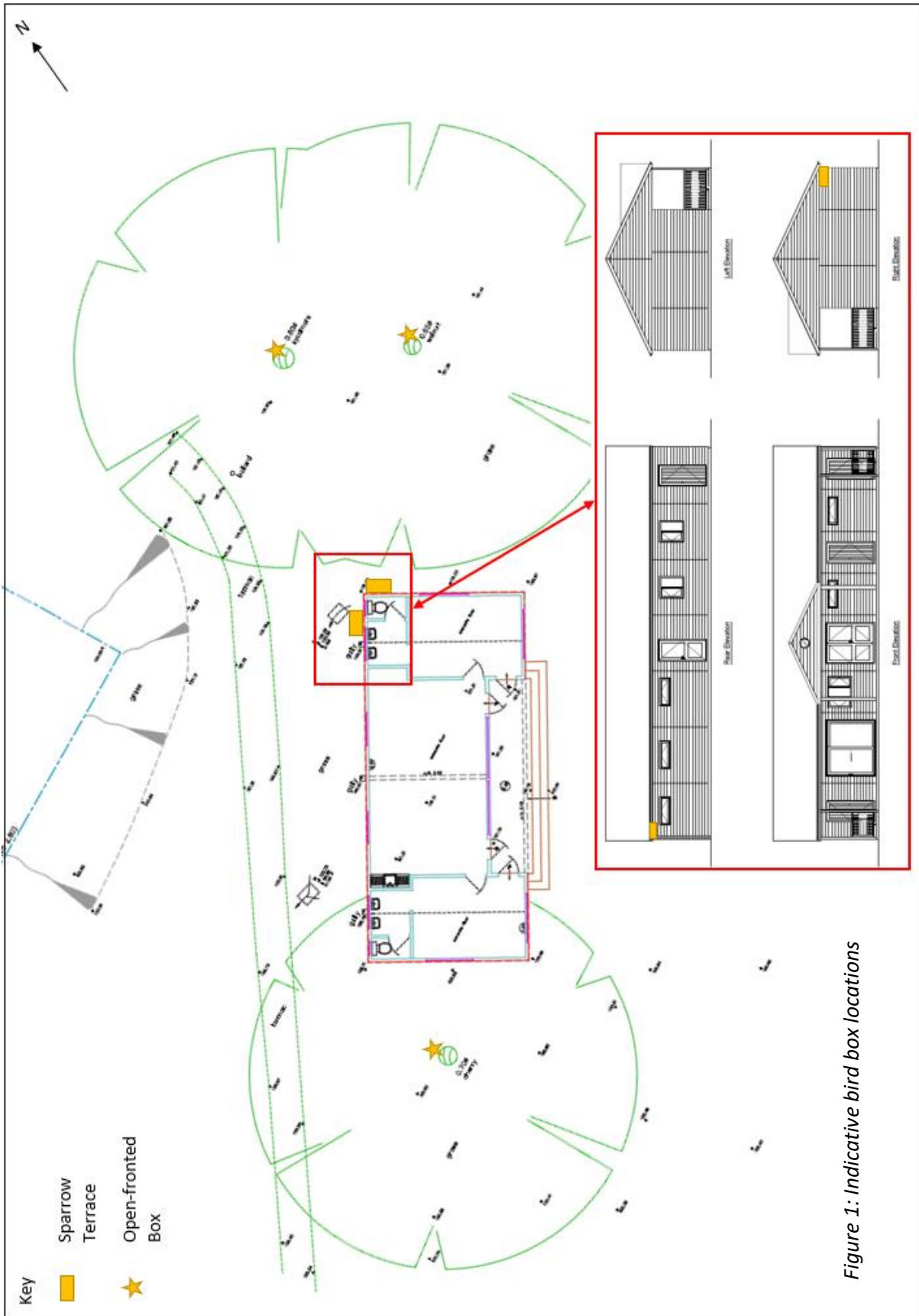


Figure 1: Indicative bird box locations

4. Bat Box Scheme

A total of 4 bat boxes will be provided as part of the development in an effort to secure additional bat roosting opportunities post works. The boxes will include 1x 1FQ Schwegler Bat Roost to be mounted on the new pavilion building and 3x 2F Schwegler Bat Boxes to be mounted on retained trees.

The 1FQ box will be sited on south eastern gable end of the new pavilion at the gable apex to a height of at least 4m from ground level. This southerly elevation is chosen to ensure maximum chance of occupation success.

The 3x 2F general purpose, tree mounted bat boxes will be sited to the southern side of the three retained and protected trees on site at a height of between 4m and 6m from ground level.

All bat boxes will be sited to ensure a clear flight path to the box entrance and close proximity to vegetation.



1FQ Schwegler Bat Roost



2F Schwegler Bat Box

The indicative locations of these bat boxes are included within Figure 2:

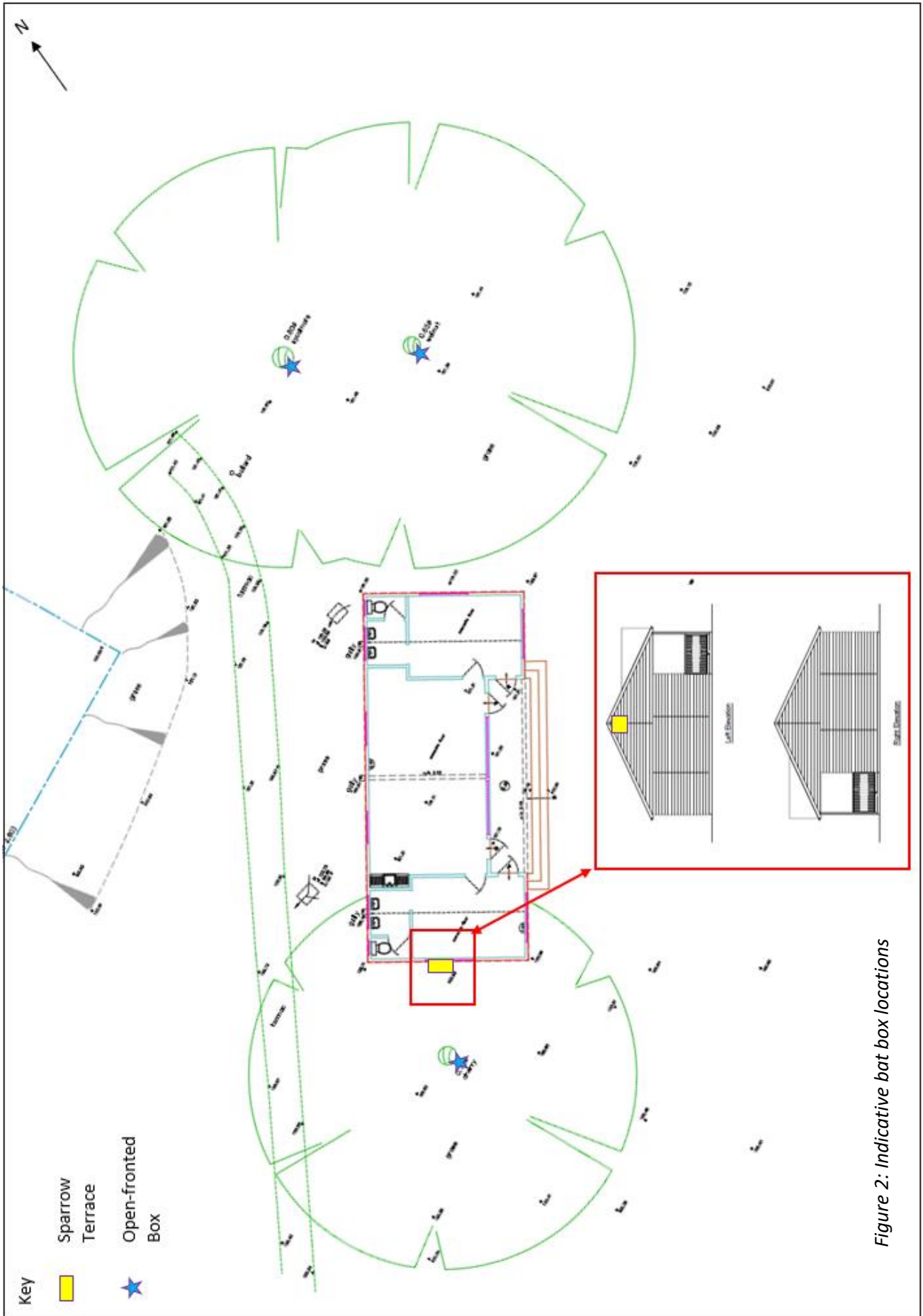


Figure 2: Indicative bat box locations

5. Monitoring and Remedial Requirements

Bird Box Monitoring

All bird boxes will be checked annually prior to the active bird nesting season (February to September) to ensure they are structurally sound and fit for purpose. Any damaged boxes should be repaired or replaced.

The contents of each box should be checked and old inactive nests removed. This activity will only be undertaken outside of bird nesting season to avoid potential disturbance to nesting birds. Cleaning of boxes will reduce risk of parasite infestation and increase chances of annual occupation and use by nesting birds. Gloves should be worn at all times and appropriate biosecurity measures adopted.

Methodology

Wait until autumn and then remove the contents, scattering them on the ground some way from the box to help prevent parasites re-infesting the nest box. Wear gloves and use a small brush or scraper to remove debris from the corners. Boiling water can be used to kill any parasites remaining in the box, but remember to leave the lid off for a while for it to dry out. Do not wait until the winter to clean out nest boxes as birds may already be roosting in them. The tit species do a thorough clean out of any old nesting material or roosting debris before they begin nesting again but it will save them energy if you can help out.

Bat Box Monitoring

Bats and their roosting sites are protected, as such disturbance levels to all bat roost boxes should be minimised wherever possible. However, to ensure bat boxes remain fit for purpose an annual check should be undertaken outside of bat "active season" of May to September. Should this annual check reveal a box to be damaged and in need of replacement or repair, a suitably licenced bat worker will be instructed to check the box evidence of bat roosting and their recommendations implemented in full.

6. References

- CIEEM, 2015. Guidelines on Ecological Report Writing. Chartered Institute of Ecology and Environmental Management, Winchester.
- CIEEM, 2016. Guidelines for Ecological Impact Assessment in the UK and Ireland: Terrestrial, Freshwater and Coastal. 2nd ed. Winchester: Chartered Institute of Ecology and Environmental Management.
- CIEEM, 2017. Chartered Institute of Ecology and Environmental Management Website. [Online] Available at: www.cieem.net
- RSPB, Placing a bird box. [Online] Available at: <https://www.rspb.org.uk/birds-and-wildlife/advice/how-you-can-help-birds/nestboxes/nestboxes-for-small-birds/making-and-placing-a-bird-box/>
- CWS, 2021, Bat Survey Report, Cricket Pavilion at Sibford School
- CWS, 2021, Tree Report, Cricket Pavilion at Sibford School