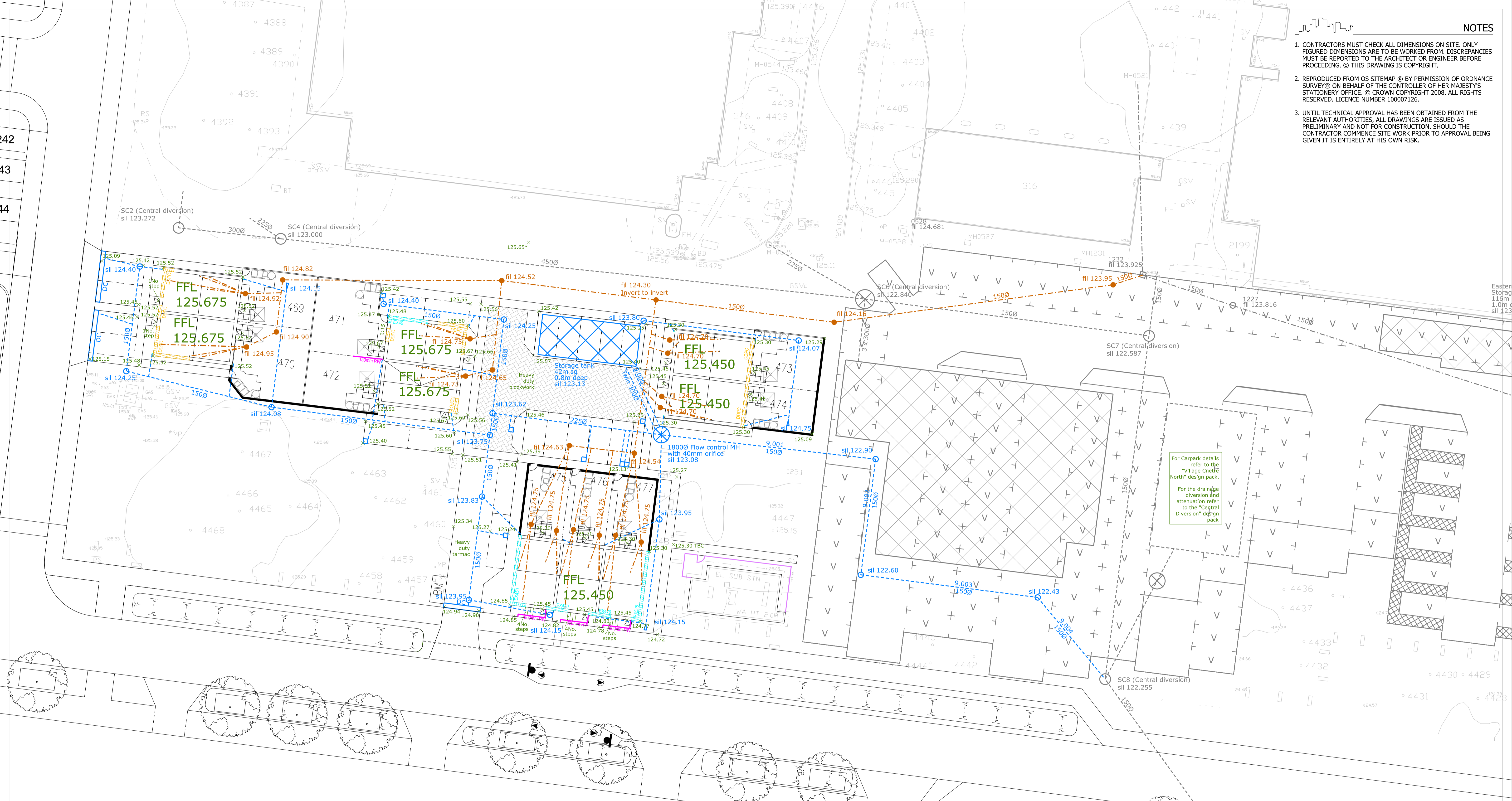


- 1. CONTRACTORS MUST CHECK ALL DIMENSIONS ON SITE. ONLY FIGURED DIMENSIONS ARE TO BE WORKED FROM. DISCREPANCIES MUST BE REPORTED TO THE ARCHITECT OR ENGINEER BEFORE PROCEEDING. © THIS DRAWING IS COPYRIGHT.
- 2. REPRODUCED FROM OS SITEMAP © BY PERMISSION OF ORDNANCE SURVEY® ON BEHALF OF THE CONTROLLER OF HER MAJESTY'S STATIONERY OFFICE. © CROWN COPYRIGHT 2008. ALL RIGHTS RESERVED. LICENCE NUMBER 100007126.
- 3. UNTIL TECHNICAL APPROVAL HAS BEEN OBTAINED FROM THE RELEVANT AUTHORITIES, ALL DRAWINGS ARE ISSUED AS PRELIMINARY AND NOT FOR CONSTRUCTION. SHOULD THE CONTRACTOR COMMENCE SITE WORK PRIOR TO APPROVAL BEING GIVEN IT IS ENTIRELY AT HIS OWN RISK.



KEY

- Medium Foul I.C. (450mm dia. Depth to invert 600-1000mm)
Non Entry I.C. (330mm dia. Depth to invert 1000-3000mm)
- Medium Surface Water I.C. (450mm dia. Depth to invert 600-1000mm)
Non Entry I.C. (330mm dia. Depth to invert 1000-3000mm)
- PCC Manhole
- Yard gully
- Drainage Channel to be ACO MultiDrain MD or similar approved
- Rodding Eye
- Double Damp Proof Course
- Extra face brickwork
- Brickwork retaining wall
- Existing tree Root Protection Zone

- NOTES**
- Contractors must check all dimensions on site. Only figured dimensions are to be worked from. Discrepancies must be reported to the Architect or Engineer before proceeding.
© This drawing is copyright.
 - Reproduced from OS Sitemap © by permission of Ordnance Survey on behalf of The Controller of Her Majesty's Stationery Office. © Crown copyright 2008. All rights reserved. Licence number 100007126.
 - Until technical approval has been obtained from the relevant authorities, all drawings are issued as preliminary and not for construction. Should the Contractor commence site work prior to approval being given it is entirely at his own risk.
 - All connections to adoptable manholes from private building drainage to be 150mm diameter pipes unless otherwise specified.
 - All house drainage to be 100mm dia unless otherwise stated, and laid in accordance with current Building Regulations and BS8301 : 1985.
 - All private drainage products are to be Polypipe or similar approved.
 - Pipe bedding material is to be Class S with 150mm minimum thickness surround. Or concrete surround if cover is less than 1.0m under drives. The contractor shall satisfy themselves and agree with the Site Management the actual extent of pipe protection required.

- NOTES**
- Backfill is to be with selected fill free of stones larger than 40mm, lumps of clay over 100mm, timber, frozen material and vegetable matter.
 - Pipe protection of house drainage runs is required in accordance with the Typical House Drainage Details drawing. The contractor shall satisfy themselves and agree with the Site Management the actual extent of pipe protection required.
 - Pipes entering and leaving manholes/inspection chambers shall include a rocker pipe, 600mm in length.
 - Brickwork to chambers shall be Class B Engineering to BS3921.
 - Rainwater pipes are to be sited on side elevations whenever possible.
 - Concrete protection over tanks to be provided as per structural engineers details.
 - All retaining walls with a height of 600mm or greater are to include 1.2m high post and rail fencing unless located in rear gardens. Similar retaining walls in rear gardens are to include 900mm height picket fence.
 - All flights of steps to primary level access, with more than 2 steps are to be provided with handrailing, except where the steps are 900mm are more apart.
 - Steps in front of plots 475-477 are 150mm steps based on designed Camp Road levels. Any as-built variation to Camp Road will result in step riser being decreased. Minimum riser height to be 130mm.

REVISION	DESCRIPTION	DRAWN	CHECKED	DATE
A	REVISED TO LATEST LAYOUT	AT	JF	04.02.22
B	REVISED TO LATEST LAYOUT	AT	JF	20.01.22
C	UPDATED TO DETAILED DESIGN	AT	JF	20.10.21
D	UPDATED TO SUIT LATEST SITE LAYOUT	AT	JF	25.09.17
E	UPDATED TO SUIT ALTERATIONS TO CENTRAL DIVERSION	AT	JF	12.05.17
F	UPDATED TO SUIT LATEST SITE LAYOUT	AT	JF	22.03.17

PRELIMINARY
 INFORMATION
 TENDER
 CONSTRUCTION
 AS BUILT

WOODS HARDWICK
ARCHITECTS, ENGINEERS AND DEVELOPMENT CONSULTANTS

TITLE: UPPER HEYFORD
 PHASE 7b (PART OF PARCEL D2d)
 DETAILS: PROPOSED ENGINEERING LAYOUT

SCALE: A1-1:200
 DATE: MARCH 2017
 DRAWN: AT
 CHK: JF

15-17 GOLDINGTON ROAD
 BEDFORD, MK40 3NH
 T: +44 (0)1234 268662
 FORT DUNLOP, FORT PARKWAY
 BIRMINGHAM, B24 9PE
 UNITED KINGDOM
 T: +44 (0)121 6297700
 MAIL@WOODS-HARDWICK.COM
 WWW.WOODS-HARDWICK.COM

HEYF-5-1100 F
Please consider the environment before printing this drawing
Filepath: F:\Engineer