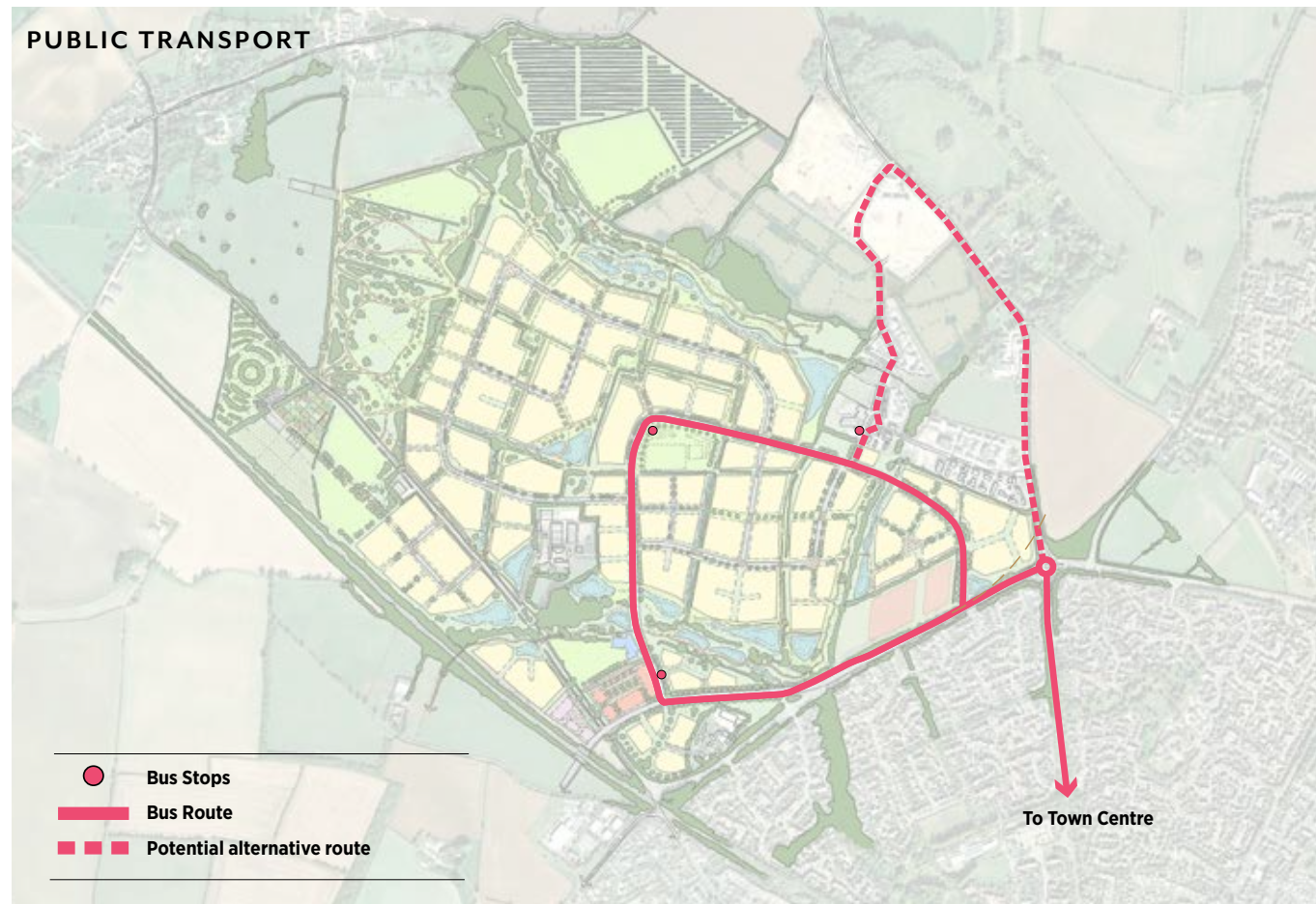


PUBLIC TRANSPORT STRATEGY

- High quality bus routes will be provided or facilitated to provide frequent and direct bus connection to key destinations, including local centres, employment sites and the main public transport hub in Bicester.
- The majority of dwellings will be within 400 metres of a bus stop and all dwellings are within 600 metres of a bus stop.



Public Transport Route and Bus Stop