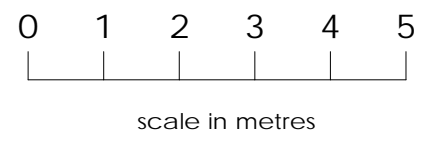
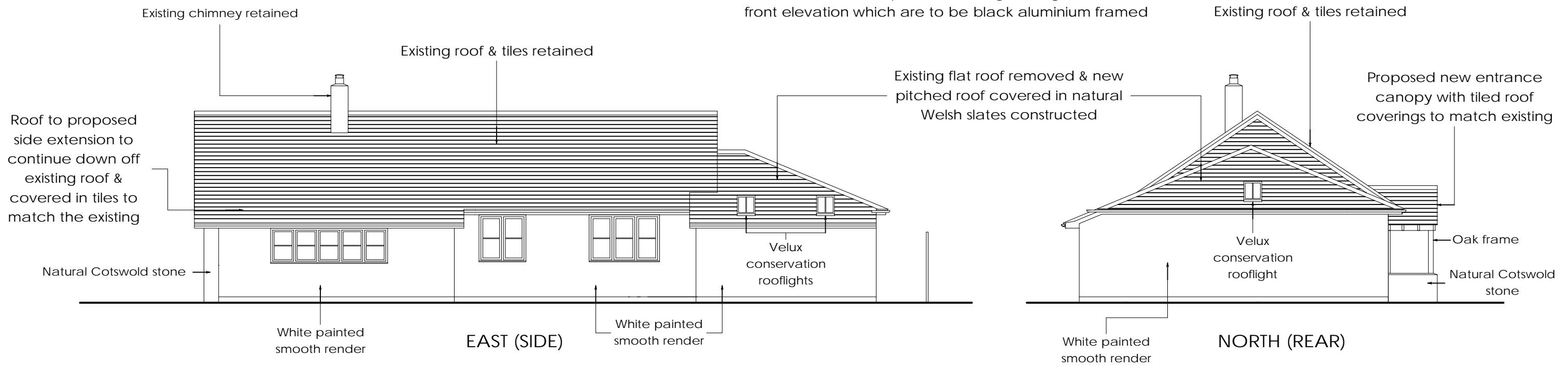


All new & replacement windows to be cream painted timber framed, except for the sliding/folding windows on front elevation which are to be black aluminium framed



Rev A. 11 Oct 21. Entrance canopy amended to be no more than 3 metres above ground level.
 Rev B Dec 21. Notes included with regard to proposed changes to external materials. Windows on front elevation & entrance door amended.
 Window to Bedroom 3 amended to 3-light in lieu of 2-light.

Moorhouse, Church Lane, Wendlebury, OX25 2PN.
 Proposed extensions & alterations, including changes to the external appearance
PROPOSED ELEVATIONS, scale 1:100
 P3077/17B
 copyright 2021 Selwyn Palmer Architects
 01494 881273
 selpalmerarchitects@gmail.com