

TOWN AND COUNTRY PLANNING ACT 1990

Bolton Road, Banbury, Oxfordshire, OX16 0TH

Heritage Proof of Evidence

Document 2 of 2

Samantha Pace

July 2022

PLANNING INSPECTORATE REFERENCE:

APP/C3105/W/22/3296229

Cherwell District Council Reference:

21/04202/F

Figures

Figure 1 View of Trelawn from the west side of North Bar Street



Figure 2 Block of apartments at Warwick Road junction



Figure 3 East side of North Bar Street, south of appeal site

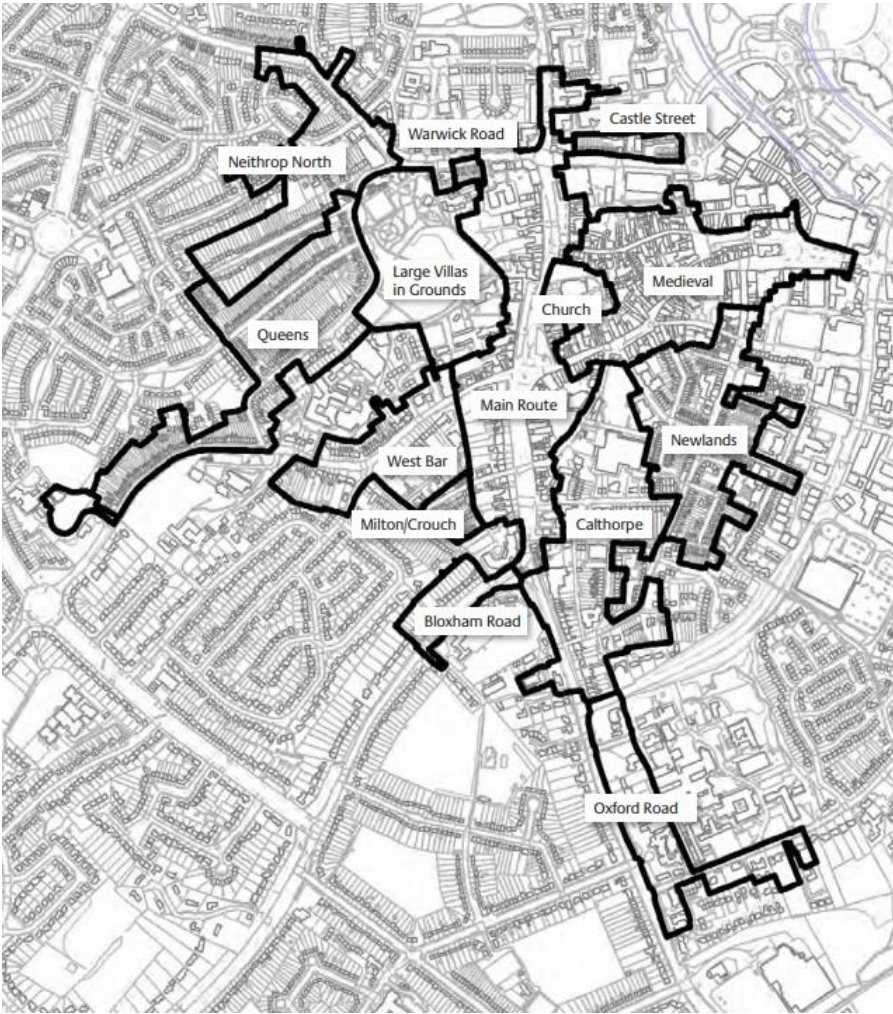


Figure 4 Terraced houses to the north side of Castle Steet



Figure 5

Map showing character areas of Banbury Conservation Area



Map reproduced courtesy of Cherwell District Council

Figure 6 Photograph of Trelawn viewed from the south-west showing the historic iron railings, 1910



Image reproduced courtesy of Oxfordshire History Centre

Figure 7

One of the houses on Tanyard, c.1900

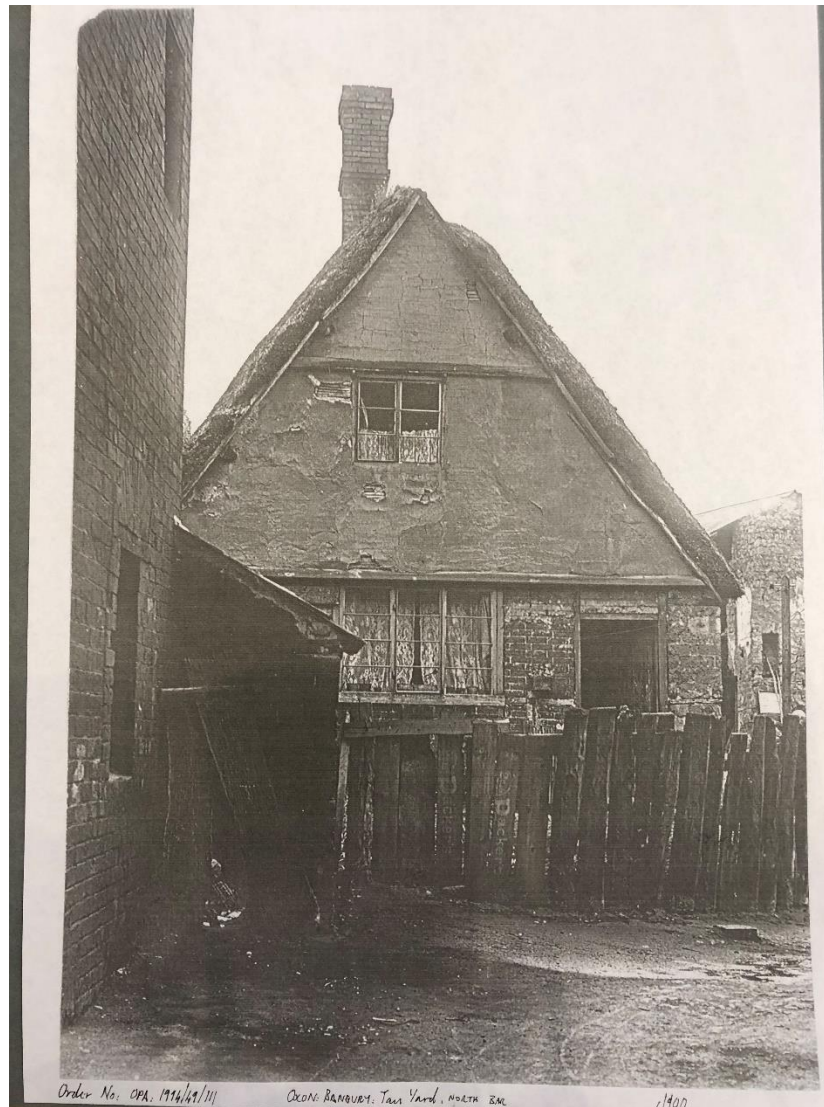
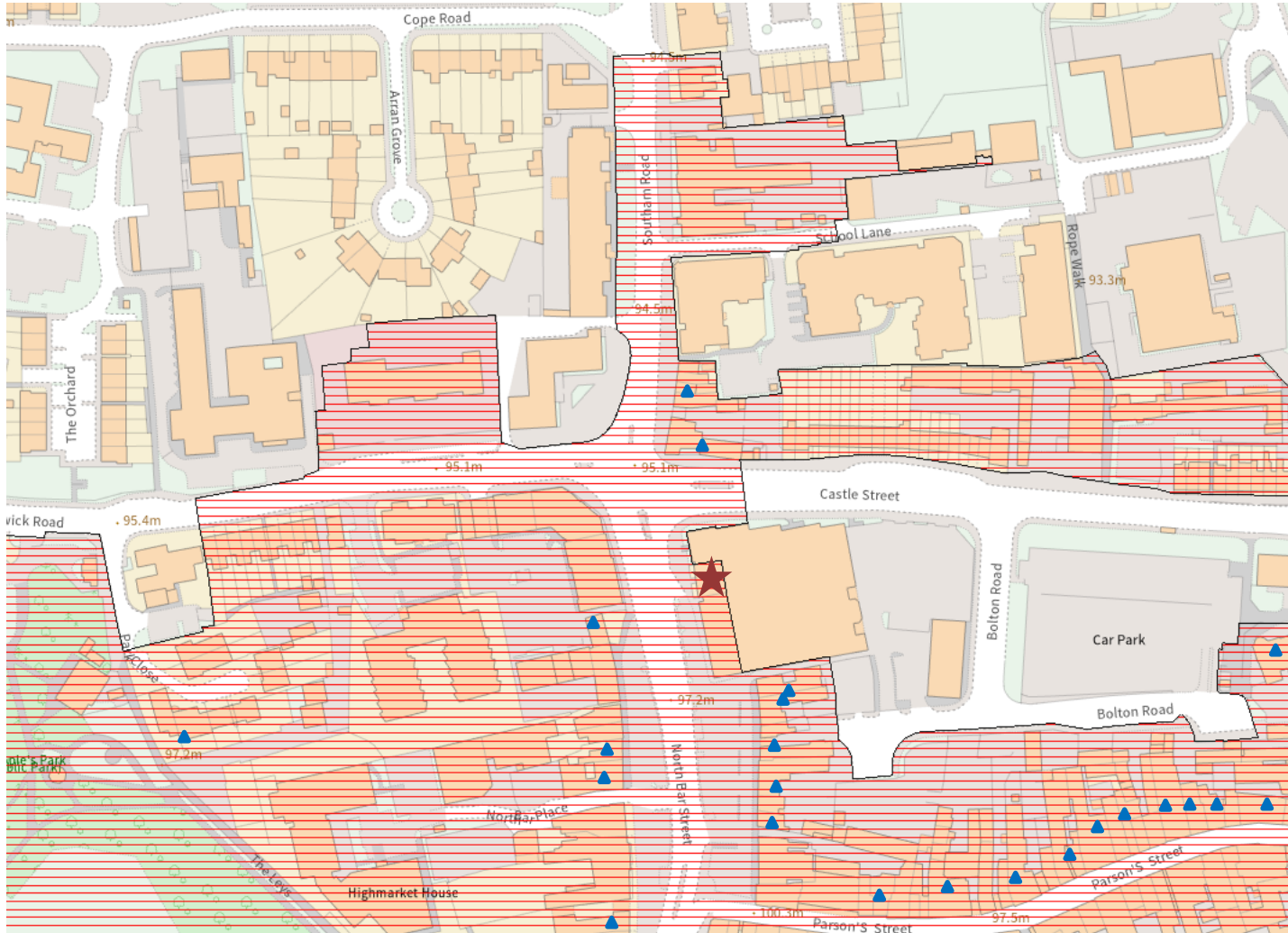


Image reproduced courtesy of Oxfordshire History Centre

Maps

Map 1

Heritage Asset Map

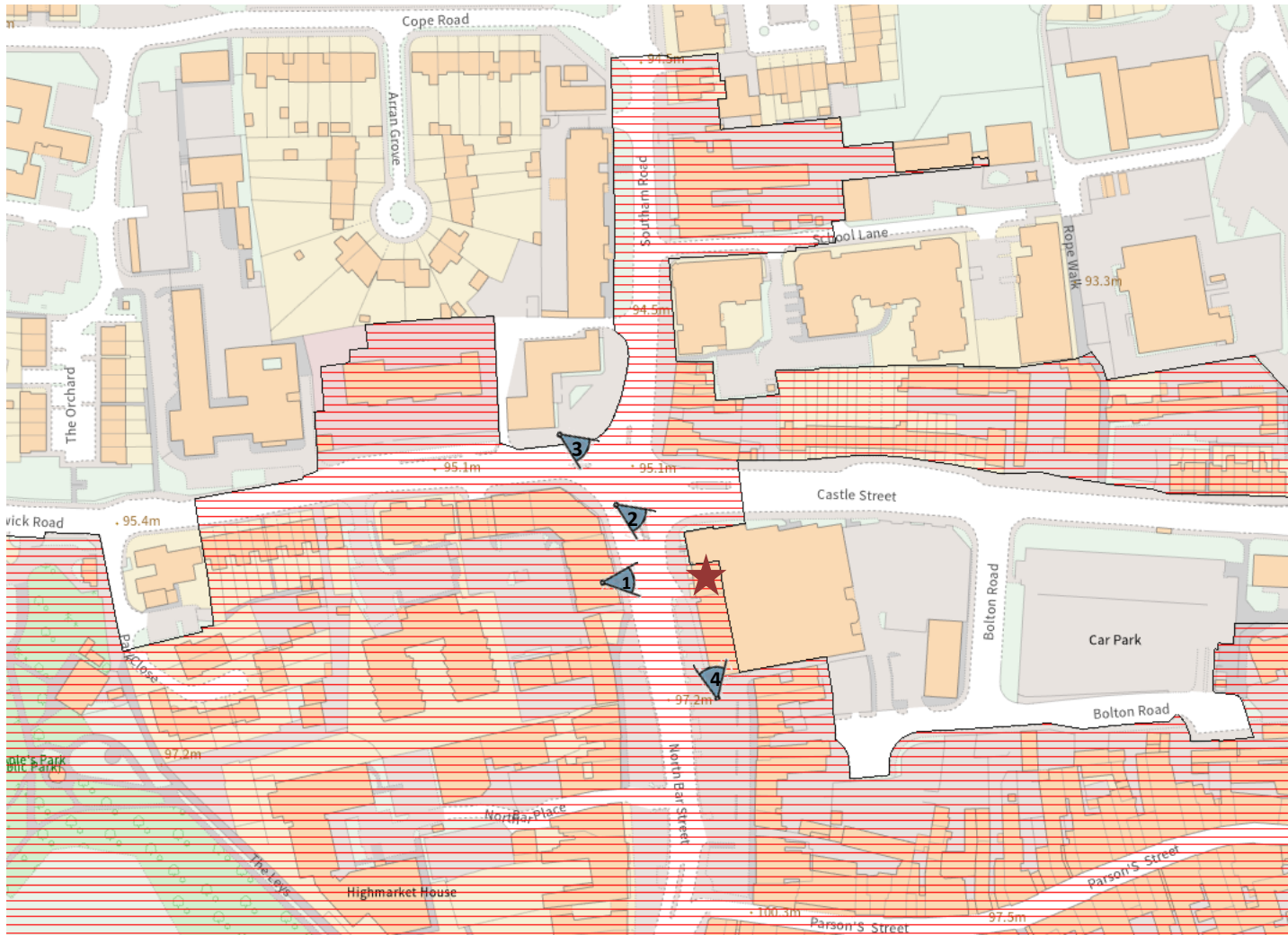


Legend

- ★ Trelawn (Grade II listed)
- ▨ Banbury Conservation Area
- ▲ Other Heritage Assets

Map 2

Map showing viewpoints



Legend

- ★ Trelawn (Grade II listed)
- ▨ Banbury Conservation Area
- ▲ Viewpoint

Map 3

Tithe Map, 1852: Approximate site location highlighted



Map 4

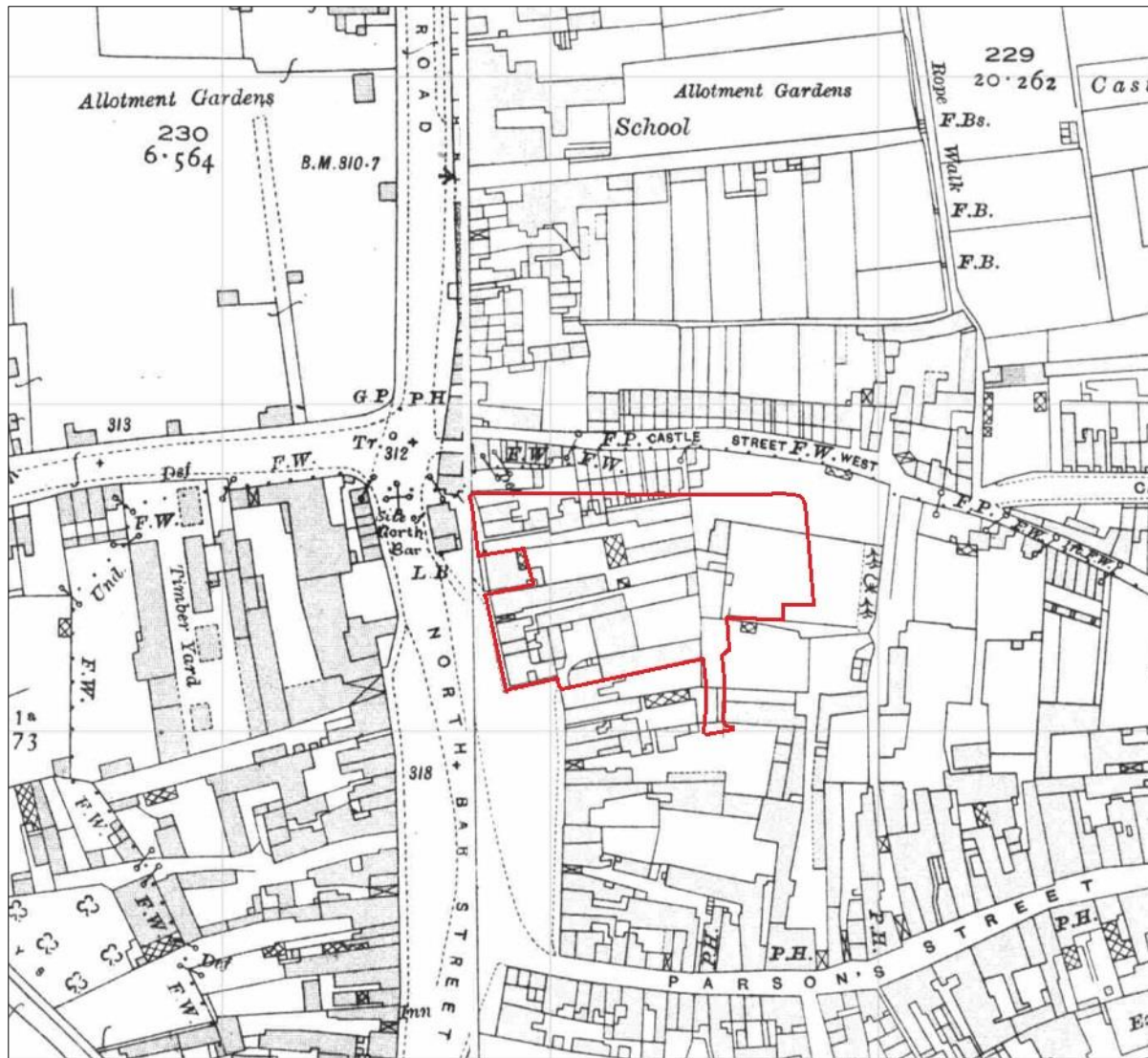
First Edition Ordnance Survey, c.1880. Approximate site location outlined

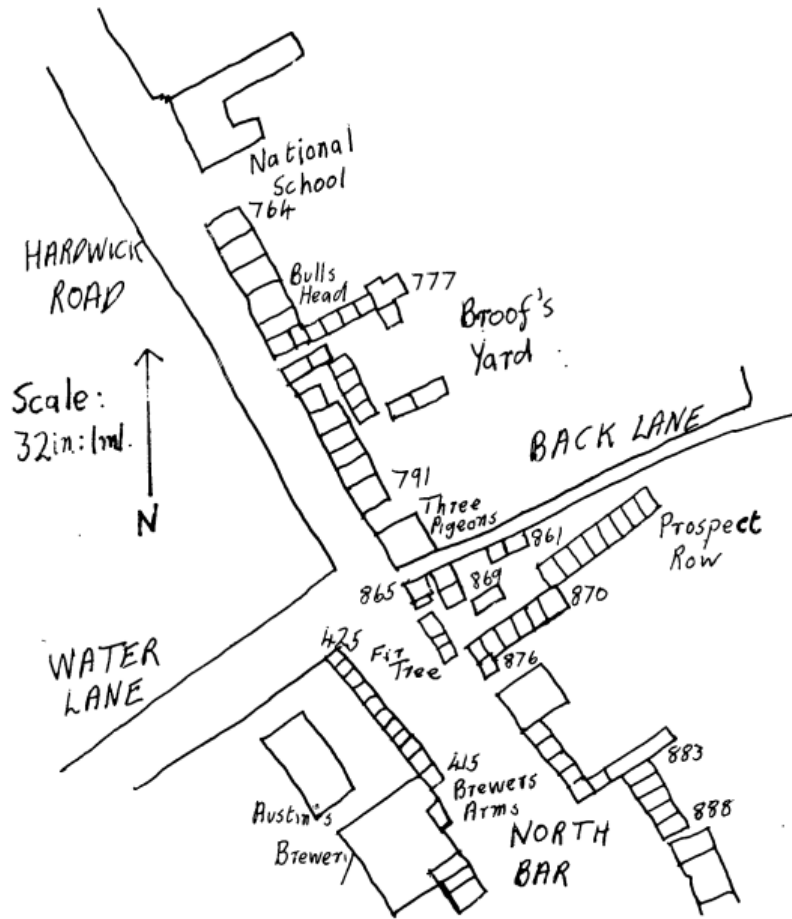




Map 6

Third Edition Ordnance Survey, c.1925. Approximate site location outlined





Viewpoints

Viewpoint 1 View of Trelawn from the west side of North Bar Street



Viewpoint 2 View of Trelawn and streetscene from the crossroads at the north end of North Bar Street



Viewpoint 3 View of Trelawn and streetscene from Warwick Road junction



Viewpoint 4 View of Trelawn and streetscene from south-west corner of appeal site

