

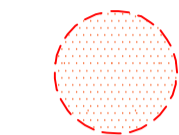
NOTES

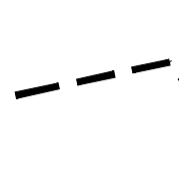
REFER TO BB TREES LTD PRE DEVELOPMENT TREE SURVEY DATED 20th JULY 2021 FOR DETAILS OF EXISTING TREES.


TREE LOCATIONS SHOWN ARE BASED ON INFORMATION PROVIDED BY GREENHATCH SURVEYS


THIS DRAWING HAS BEEN PREPARED IN ACCORDANCE WITH BS5837:2012.

LAYOUT BASED ON DARLING ASSOCIATES ARCHITECTS DRAWING 16061-(03)-S3-S-001_PL5

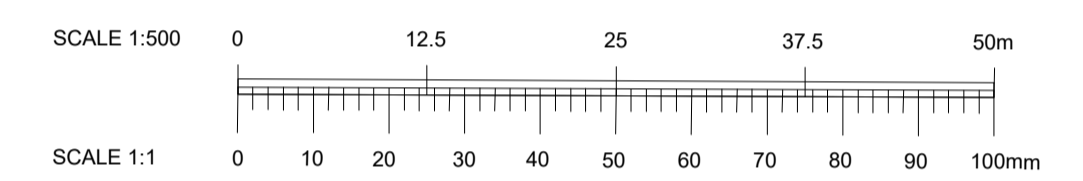
 ROOT PROTECTION ZONE: Area of hatching around protected trees indicates the minimum Root Protection Area required in accordance with the Tree and Woodland Consultancy Pre Development Tree Survey dated July 2021.

 PROTECTIVE BARRIER: Existing trees to be retained shall be protected by protective barrier erected in accordance with the specification figure 2 of BS5837:2012. Barrier to be erected on the edge of the root protection area for each tree to be protected. To be erected prior to the commencement of any construction works on site.

 EXISTING TREES TO BE TO BE RETAINED AND PROTECTED AS PART OF THE PROPOSALS

 APPLICATION SITE BOUNDARY

 PROPOSED BUILT FORM



SPECIFICATION FOR FENCING:-
All trees to be retained on site shall be protected by Heras type panel fencing (2m high) affixed to scaffold pole framework in accordance with the requirements of BS5837:2012 as shown. The location of the protective fence to be in accordance with the details contained on this BCA drawing 1953/19-04 - 'Tree Retention, Protection and Removal Plan'.

The protective fencing shall be erected before any machinery or materials are brought onto site and before any demolition and or development commences. No construction works, excavation, or ground alterations shall be carried out within the protected areas.

The protective fencing shall not be removed, or its line altered, without prior agreement. The protective fencing shall be maintained for the duration of all construction works. Care should be exercised when using cranes or similar equipment in vicinity of the tree to avoid damage to the tree canopy.

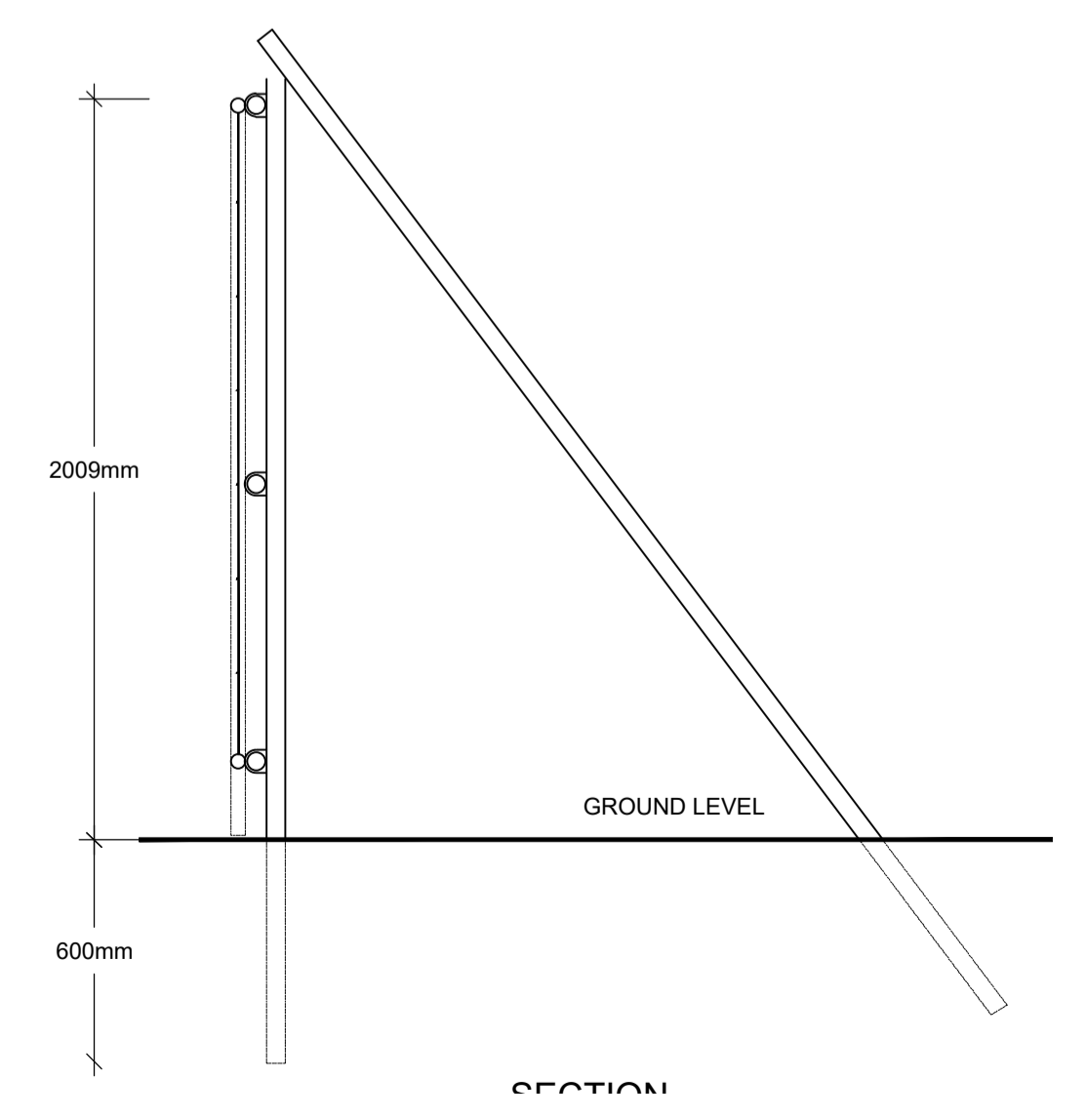
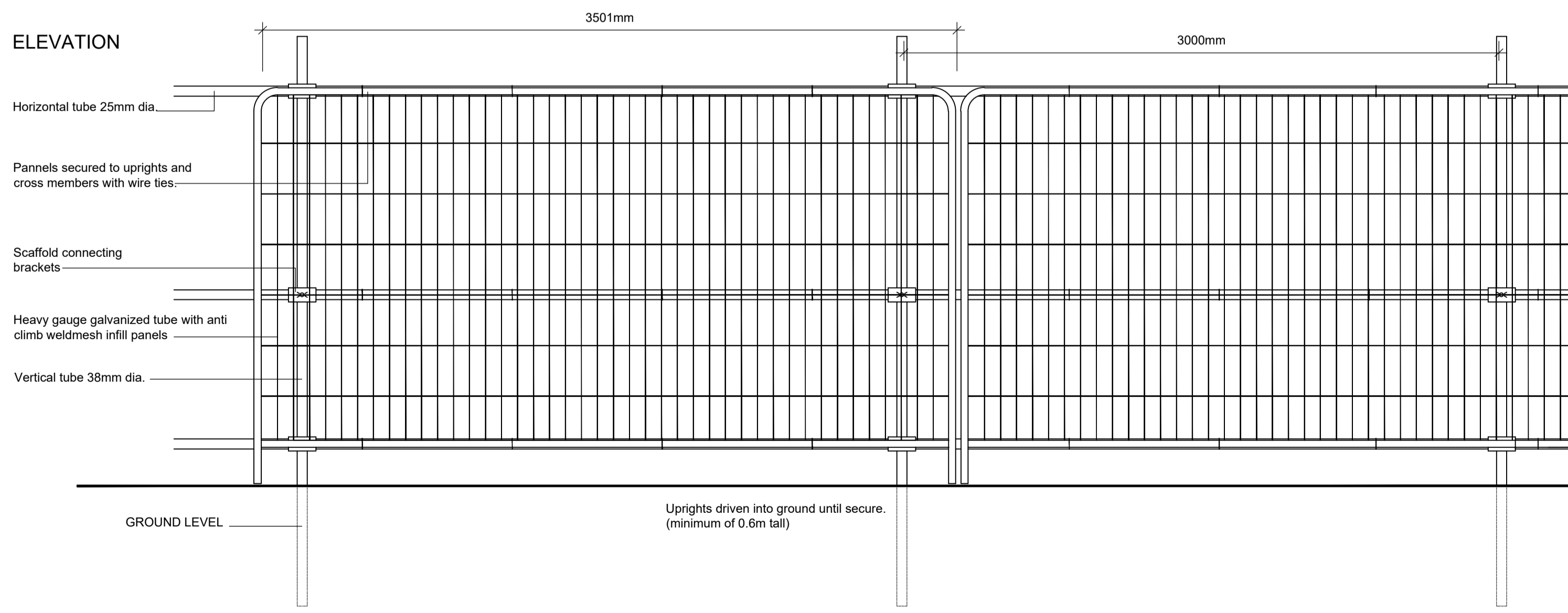
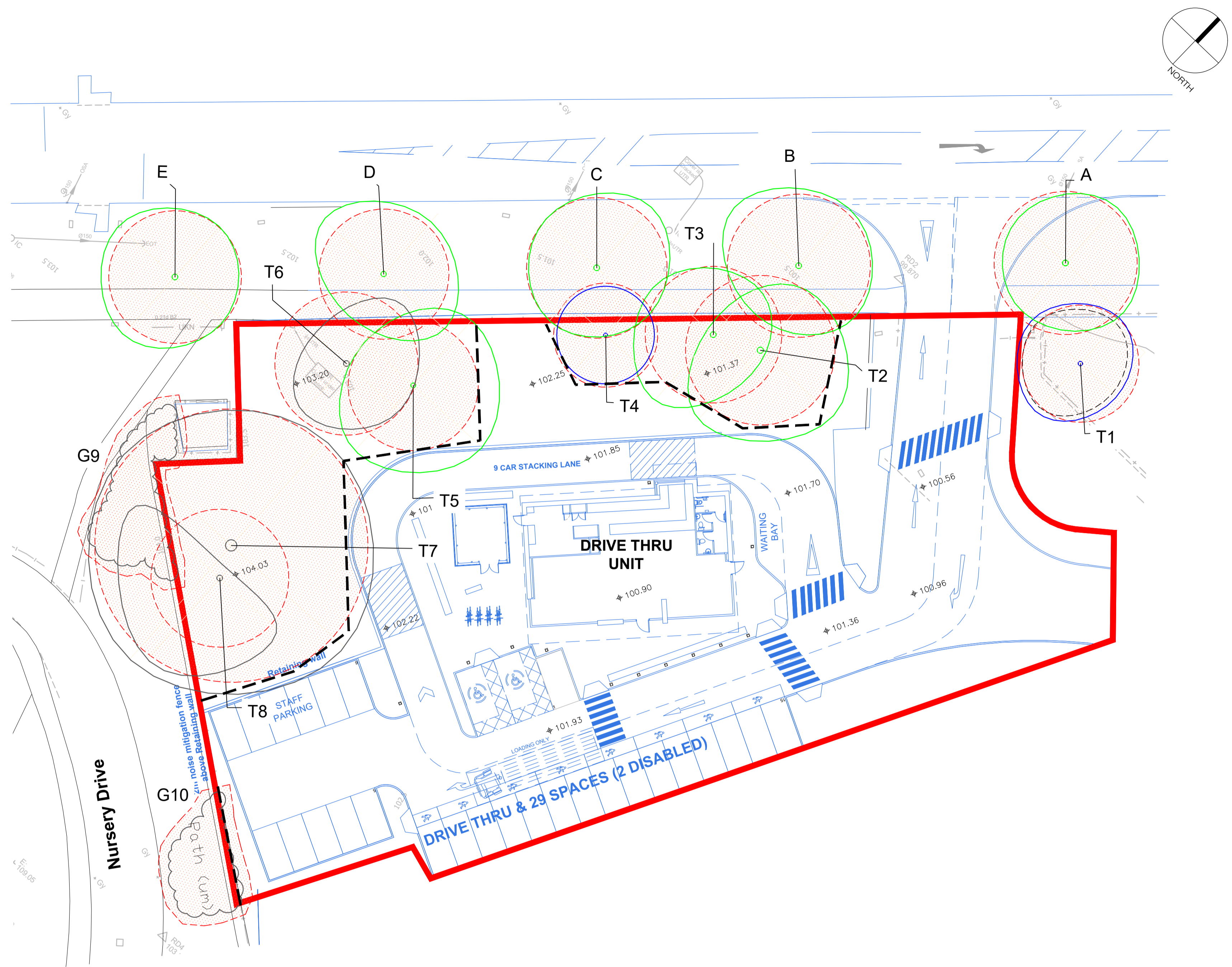
The objective of the protective fencing is to protect as large an area around the trees as possible in order to minimise the risk of damage to trees during construction. However if, after consideration of all alternatives, it proves essential for construction, excavation or service trench works need to be carried out within the defined protected area around the tree, specialist design advice shall be sought from the contract supervisor who will consult an Arboricultural Consultant / Engineer to minimise disturbance to the tree and its root system.

HERAS TYPE PANEL PROTECTIVE FENCING TO BE IN ACCORDANCE WITH THE REQUIREMENTS OF BS5837:2012
2000mm high to be installed in the location indicated on plan. Signage is to be fixed to the protective fencing to deter access within protective zone. Fencing is to remain in place and be maintained throughout the contract period.

Within protected areas:
Existing soil levels shall remain undisturbed and any works required shall be carried out only by hand, under supervision of arboriculturalist. All haulage routes and contractors compounds, storage facilities etc shall be kept outside the protected areas.

PROTECTION OF EXISTING TREES: GENERAL REQUIREMENTS
In compliance with good practice, during all design and construction works and in accordance with BS5837 (2012) "Trees in relation to design, demolition and construction - recommendations" and BS3998 (2010) "Recommendations for Tree Work", the following precautions must be considered to avoid damage to trees:

- Site construction access;
- The intensity of and nature of construction activity;
- Contractors car parking over the root system;
- Phasing of construction works;
- The space needed for foundation excavations and construction work;
- The availability of special construction techniques;
- The location and space needed for all temporary and permanent apparatus and service runs, including foul and surface water drains, land drains, soakaways, gas, oil, water, electric, telephone, television or other communication cables;
- All changes in ground level, including the location of retaining walls, steps and making adequate allowance for foundations of such walls and backfilling;
- Working space for cranes, plant scaffolding and access during work;
- Space for site huts, temporary toilet facilities (including their drainage) and other temporary structures;
- The type and extent of landscape works which will be needed within the protected areas, and the effects these will have on the root system;
- Space for storing (whether temporary or long term) materials, spoil and fuel and the mixing of cement and concrete shall be stored a minimum of 10m from all trees;
- The effects of slope on the movement of potentially harmful liquid spillages towards or into protected areas;
- No traffic over the root system;
- No soil, debris or building material to be deposited against the trunk of a tree;
- No fires to be lit below branches. No generators or static machinery to be operated below branches;
- No cutting of branches or roots except by a specialist firm;
- No trees to be used as an anchor for winching purposes;
- Dead, diseased and dying branches will be removed from trees being retained;
- Where necessary tree crowns will be thinned to reduce weight and improve shape;
- Concrete mixing to occur a minimum of 10m from all trees.
- No site/signage boards, telephone cables or any other services shall be attached to a tree;
- Tree Surgery work to trees to be retained, will be carried following advice from a qualified arboriculturalist.



D. Architects layout revised	12-11-21 JG
C. Site renamed, tree survey updated, architects layout revised	28-07-21 JG
B. Drawing issued for planning	31/10/19 MB
A. Layout updated to correspond with latest architects plan	22/10/19 JG
REV NOTE	DATE AUTH

BCA BARRY CHINN
associates
Landscape Architects

CLIENT PALOMA CAPITAL					
PROJECT JACOB DOUWE EGBERTS, RUSCOTE AVENUE, BANBURY					
DRAWING TREE RETENTION, PROTECTION AND REMOVAL PLAN - SITE 3					
CONTRACT	1953/19	DRG NO.	04		
DATE	15/04/19	DRAWN		MAB	
ISSUE	Planning	CHECKED		MG	
SCALE	1:250	ORIG SHEET	A1	REV	D
CAD FILE	1953/19-03.dwg				